

# LEGACY CREEK 4TH ADDITION

CITY OF BLAINE  
COUNTY OF ANOKA  
SEC. 2, T. 31, R. 23  
BOOK 77 OF ABST PAGE 24

2095936.002  
Office of RECORDER/REGISTRAR  
OF TITLES  
STATE OF MINNESOTA COUNTY OF ANOKA  
I hereby certify that the within instrument was filed in  
this office for record on the 14th day of  
June, 20 14 at 11:50 o'clock A.M.  
and was duly recorded in book 77, page  
24  
Jonell M. Sawyer  
Recorder/Registrar of Titles  
By MM  
Deputy

KNOW ALL PERSONS BY THESE PRESENTS: That SCC Funding I, LLC, a Minnesota limited liability company, owner of the following described property:

Outlot A and Outlot C, LEGACY CREEK 3RD ADDITION, according to the recorded plat thereof, Anoka County, Minnesota

Has caused the same to be surveyed and platted as LEGACY CREEK 4TH ADDITION and does hereby dedicate to the public for public use the drainage and utility easements as created by this plat.

In witness whereof said SCC Funding I, LLC, a Minnesota limited liability company, has caused these presents to be signed by its proper officer this 14th day of June, 20 14

SCC FUNDING I, LLC

Patrick R. Hiller its CHIEF MANAGER

STATE OF MINNESOTA  
COUNTY OF Hennepin

This instrument was acknowledged before me this 14th day of July, 20 14 by Patrick R. Hiller, its Chief Manager of SCC Funding I, LLC, a Minnesota limited liability company.

Amy Uller  
Amy Williams

Notary Public, Hennepin County, Minnesota

My Commission Expires January 31, 2018

I Craig W. Morse do hereby certify that this plat was prepared by me or under my direct supervision; that I am a duly Licensed Land Surveyor in the State of Minnesota; that this plat is a correct representation of the boundary survey; that all mathematical data and labels are correctly designated on this plat; that all monuments depicted on this plat have been, or will be correctly set within one year; that all water boundaries and wet lands, as defined in Minnesota Statutes, Section 505.01, Subd. 3, as of the date of this certificate are shown and labeled on this plat; and all public ways are shown and labeled on this plat.

Dated this 29th day of May, 20 14

Craig W. Morse  
Craig W. Morse, Licensed Land Surveyor  
Minnesota License No. 23021

STATE OF MINNESOTA  
COUNTY OF HENNEPIN

This instrument was acknowledged before me on May 29, 2014 by Craig W. Morse.

Shannon Sinnen  
Notary Public, Carver County, Minnesota  
My Commission Expires January 31, 2018

I HEREBY CERTIFY THAT THE CURRENT AND DELINQUENT TAXES ON THE LANDS DESCRIBED WITHIN ARE PAID AND THE TRANSFER IS ENTERED 7-14-14  
Jonell M. Sawyer  
DEPUTY PROPERTY TAX ADMINISTRATOR

CITY COUNCIL, CITY OF BLAINE, MINNESOTA

This plat of LEGACY CREEK 4TH ADDITION was approved and accepted by the City Council of the City of Blaine, Minnesota at a regular meeting thereof held this 17th day of April, 20 14, and said plat is in compliance with the provisions of Minnesota Statutes, Section 505.03, Subd. 2.

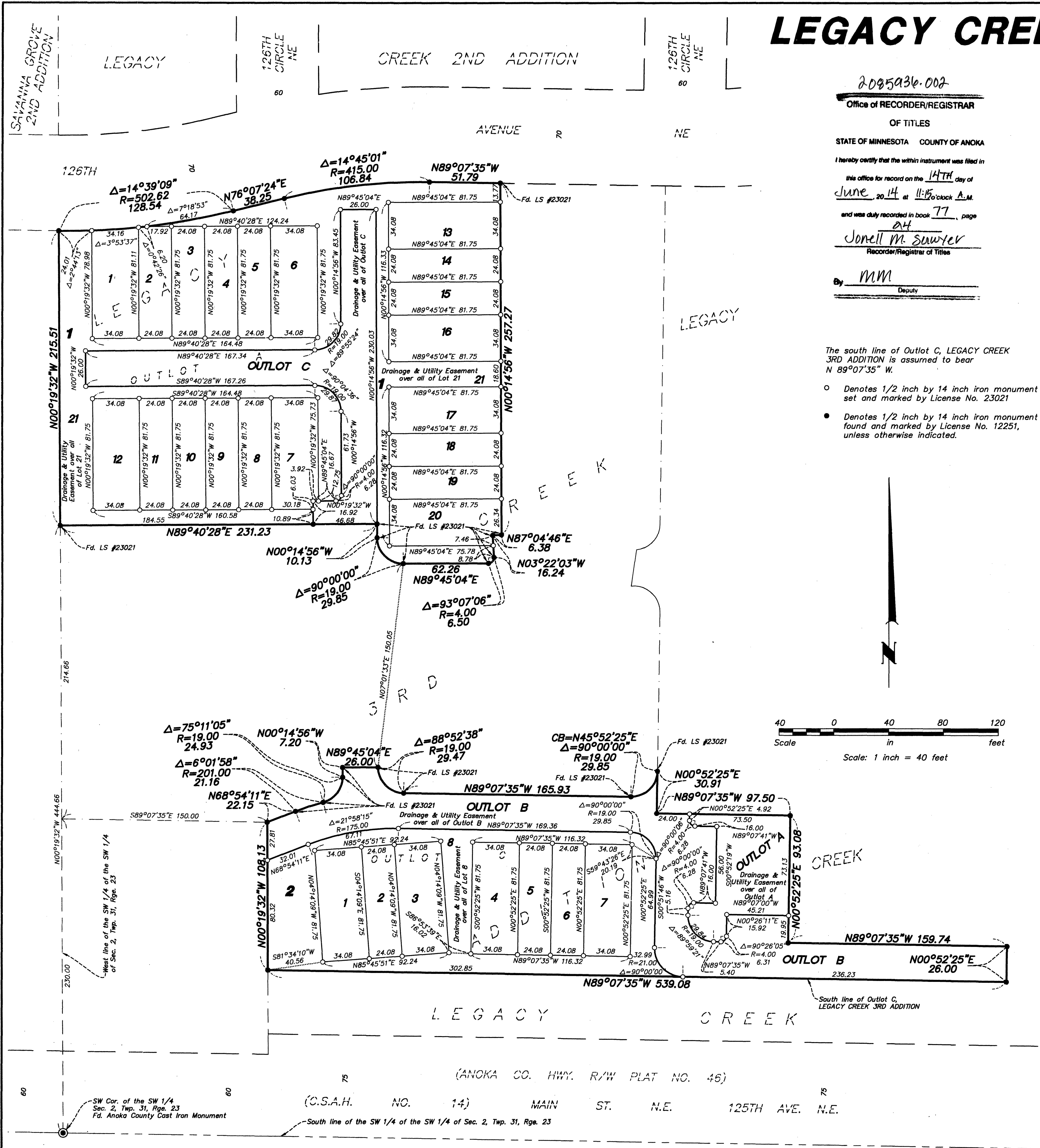
City Council, City of Blaine, Minnesota

By Tom Payne Mayor By Collin Jensen Clerk

COUNTY SURVEYOR

I hereby certify that, in accordance with Minnesota Statutes, Section 505.021, Subd. 11, this plat has been reviewed and approved this 14th day of June, 20 14

Larry D. Holm  
Larry D. Holm, Anoka County Surveyor



(C.S.A.H. NO. 14) MAIN ST. N.E. 125TH AVE. N.E.  
South line of the SW 1/4 of the SW 1/4 of Sec. 2, Twp. 31, Rge. 23  
SW Cor. of the SW 1/4 Sec. 2, Twp. 31, Rge. 23 Fd. Anoka County Cast Iron Monument

\$516.00