

LEGACY CREEK 5TH ADDITION

KNOW ALL PERSONS BY THESE PRESENTS: That ALN Property LLC, a Minnesota limited liability company, owner of the following described property:

Outlot G, LEGACY CREEK, according to the recorded plat thereof, Anoka County, Minnesota

Has caused the same to be surveyed and platted as LEGACY CREEK 5TH ADDITION and does hereby dedicate to the public for public use the drainage and utility easements as shown by this plat.

In witness whereof said ALN Property LLC, a Minnesota limited liability company, has caused these presents to be signed by its proper officer this 5th day of February, 2015.

ALN Property LLC.

Amy Wiechmann

Amy Wiechmann as Chief Manager

STATE OF MINNESOTA
COUNTY OF Anoka

This instrument was acknowledged before me this 5th day of February, 2015 by Amy Jb Wiechmann as Chief Manager of ALN Property LLC, a Minnesota limited liability company.

Jamela L Siemsen

Jamela L Siemsen
Notary Public, Anoka County, Minnesota
My Commission Expires January 31, 2020

I Marcus F. Hampton do hereby certify that this plat was prepared by me or under my direct supervision; that I am a duly Licensed Land Surveyor in the State of Minnesota; that this plat is a correct representation of the boundary survey; that all mathematical data and labels are correctly designated on this plat; that all monuments depicted on this plat have been, or will be correctly set within one year; that all water boundaries and wet lands, as defined in Minnesota Statutes, Section 505.01, Subd. 3, as of the date of this certificate are shown and labeled on this plat; and all public ways are shown and labeled on this plat.

Dated this 7 day of October, 2014.

Marcus F. Hampton

Marcus F. Hampton, Licensed Land Surveyor, Minnesota License No. 47481

STATE OF MINNESOTA
COUNTY OF Hennepin

This instrument was acknowledged before me this 7 day of October, 2014 by Marcus F. Hampton.

Quirk C. Bell

Jessica C Bell
Notary Public, Dakota County, Minnesota
My Commission Expires January 31, 2016

CITY COUNCIL, CITY OF BLAINE, MINNESOTA

This plat of LEGACY CREEK 5TH ADDITION was approved and accepted by the City Council of the City of Blaine, Minnesota at a regular meeting thereof held this 10th day of October, 2014, and said plat is in compliance with the provisions of Minnesota Statutes, Section 505.03, Subd.2.

City Council, City of Blaine, Minnesota

By: Jan Paw, Mayor

By: William Dawson, Clerk

COUNTY SURVEYOR

I hereby certify that in accordance with Minnesota Statutes, Section 505.021, Subd. 11, this plat has been reviewed and approved this 10th day of March, 2015.

By: Larry D. Holium by Charles J. Getzen, Deputy
Larry D. Holium, Anoka County Surveyor

COUNTY AUDITOR/TREASURER

Pursuant to Minnesota Statutes, Section 505.021, Subd. 9, taxes payable in the year 2015 on the land hereinbefore described have been paid. Also, pursuant to Minnesota Statutes, Section 272.12, there are no delinquent taxes and transfer entered this 3 day of August, 2015.

Jonell M Sawyer
Property Tax Administrator

By: Becky Hanson, Deputy

COUNTY RECORDER/REGISTRAR OF TITLES

County of Anoka, State of Minnesota

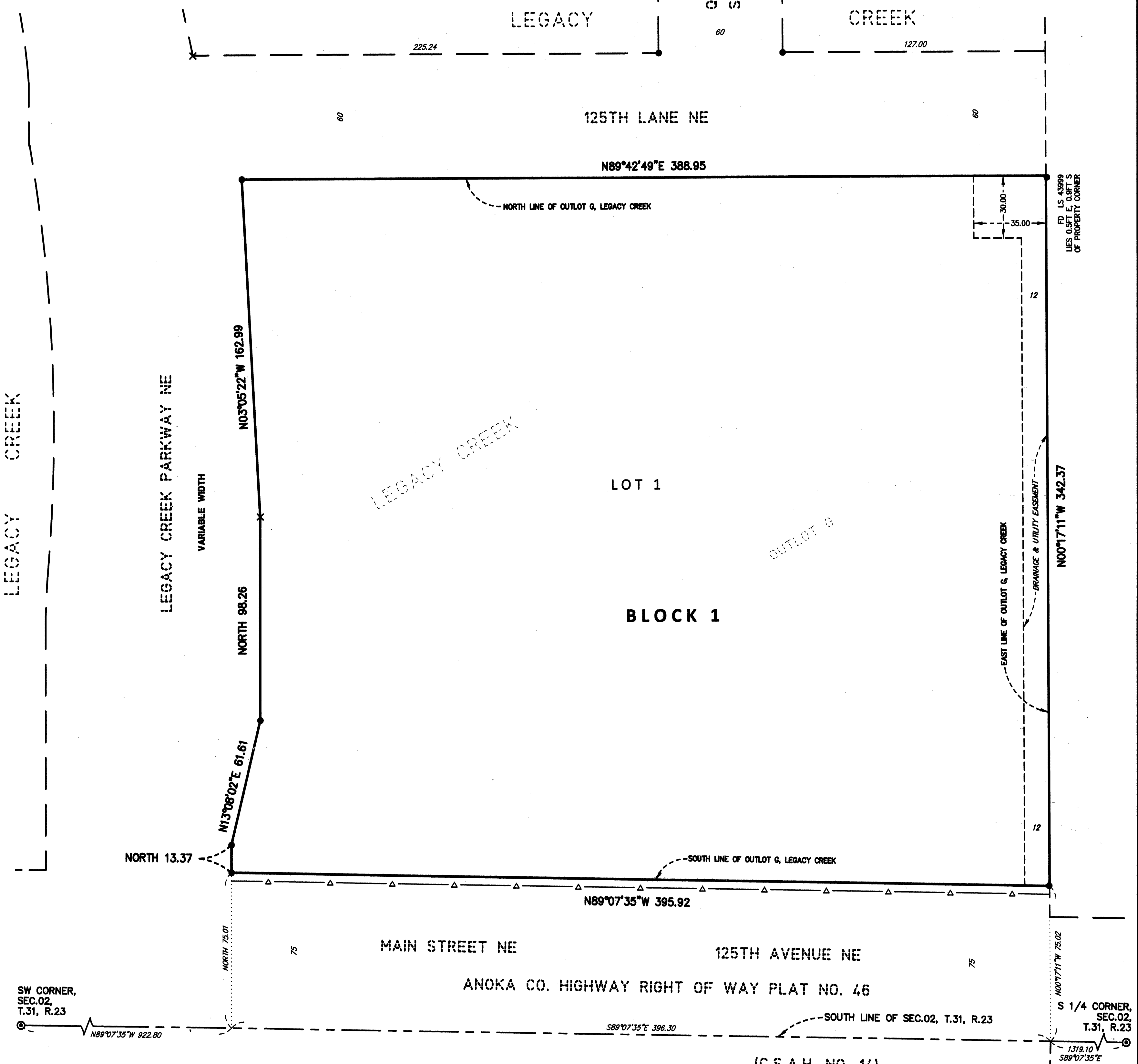
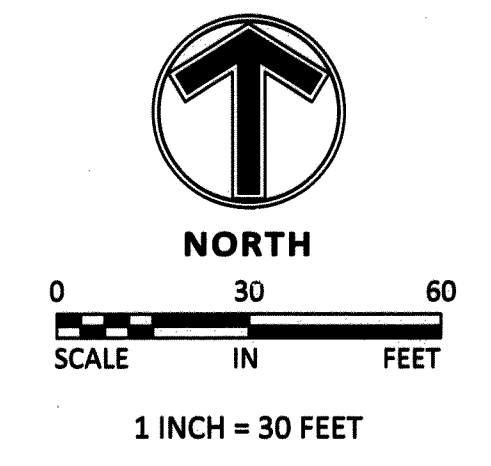
I hereby certify that this plat of LEGACY CREEK 5TH ADDITION was filed in the office of the County Recorder/Registrar of Titles for public record on this 3 day of August, 2015 at 2:11 o'clock P.M. and was duly recorded in Book 78 Page 26, as Document Number 2114680.001.

Jonell M Sawyer
County Recorder/Registrar of Titles

By: Becky Hanson, Deputy

- DENOTES 1/2 INCH IRON MONUMENT FOUND AND MARKED BY REGISTRATION NO. 43999 UNLESS OTHERWISE SHOWN.
- × DENOTES CHISELED "X" MARK FOUND.
- △ — DENOTES RIGHT OF ACCESS DEDICATED TO ANOKA COUNTY PER THE PLAT OF LEGACY CREEK.

THE NORTH LINE OF OUTLOT G, LEGACY CREEK, IS ASSUMED TO HAVE A BEARING OF NORTH 89 DEGREES 42 MINUTES 49 SECONDS EAST.



SW CORNER, SEC.02, T.31, R.23

S 1/4 CORNER, SEC.02, T.31, R.23

(C.S.A.H. NO. 14)

\$ 56.00

SAMBATEK, INC.
ENGINEERING, PLANNING
AND LAND SURVEYING