

LEXINGTON CENTER

ANOKA COUNTY, MINNESOTA

123499
OFFICE OF REGISTER OF DEEDS,
STATE OF MINNESOTA, COUNTY OF ANOKA
I hereby certify that the within instrument was filed in this office for record on the 6th day of October, A. D. 1947 at 11 o'clock A.M., and was duly recorded in book 2962, page 10
Eva Brandell
Register of Deeds

CARTWRIGHT and OLSON
Land Surveyors

KNOW ALL MEN BY THESE PRESENTS: That we, Raymond E. Kirkpatrick and Anna G. Kirkpatrick, his wife, owners and proprietors of the following described property, situate in the County of Anoka, State of Minnesota to wit: The northeast quarter of the northeast quarter, Section 35, Township 31, Range 23 except Highway right of way, have caused the same to be surveyed and platted as "LEXINGTON CENTER", and do hereby donate and dedicate to the public for the public use forever the Roads, Avenues and Highway as shown on the annexed plat. In witness whereof we have hereunto set our hands and seals this 11th day of August 1947 A.D.

In the presence of
Harold R. Olson
William M. Luzzel
Harold R. Olson
William M. Luzzel

Signed
Raymond E. Kirkpatrick
Anna G. Kirkpatrick

STATE OF MINNESOTA } s.s.
COUNTY OF HENNEPIN }
On this 11th day of August 1947 before me, a Notary Public, within and for said County and State personally appeared Raymond E. Kirkpatrick and Anna G. Kirkpatrick, his wife, to me personally known to be the persons described in and who executed the foregoing instrument, and they affirm and acknowledge that they executed the same as their own free act and deed.
SCALE: 1"=100'
Henry W. Luderale
Notary Public, Hennepin County, Minn.
My Commission Expires Aug. 14, 1949

I hereby certify that I have surveyed and platted the land described in the dedication on this sheet as "LEXINGTON CENTER"; that this plat is a correct representation of said survey; that all distances are correctly shown on said plat in figures denoting feet and decimals of a foot; that the monuments for the guidance of future surveys have been correctly placed in the ground as shown on said plat; that the topography of the land is correctly shown on said plat; that the outside boundaries of the land are correctly designated on said plat; and that there are no wet lands or public highways to be designated on said plat other than are shown thereon.

Harold R. Olson
Registered Land Surveyor

STATE OF MINNESOTA } s.s.
COUNTY OF HENNEPIN }
Above certificate subscribed and sworn to before me a Notary Public within and for said County and State on this 11th day of August 1947 A.D.

Henry W. Luderale
Notary Public, Hennepin County, Minnesota

My Commission expires Aug. 14, 1949.

This plat was approved and accepted by the Honorable Board of County Commissioners of the County of Anoka, State of Minnesota at a regular meeting held this 17th day of September 1947 A.D.

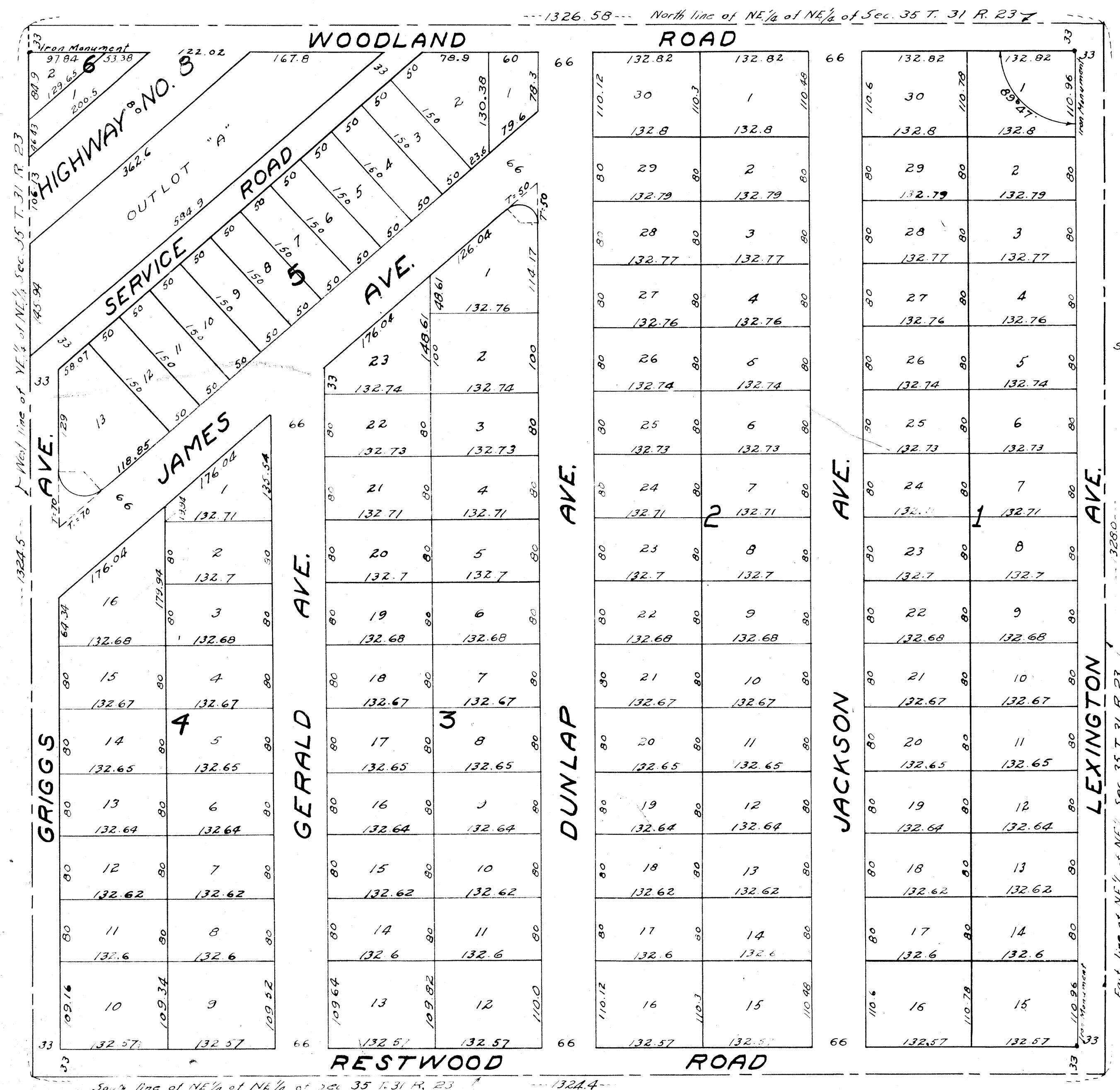
Corroll Prosdent
Chairman, Board of County Commissioners,
Anoka County, Minnesota

E. G. Carlson
County Auditor, Anoka County, Minnesota

By J. Krimmer

This plat was approved as to form and execution on this 19th day of Sept 1947 A.D.

By J. L. Pettit
County Attorney, Anoka County, Minnesota



I hereby certify that taxes for the year 1947 on the lands described within are paid
Sharon M. Swenson
County Treasurer

TAXES PAID
This 20th day of October 1947
E. G. Carlson
Auditor, Anoka County, Minn.
By J. Krimmer, Deputy