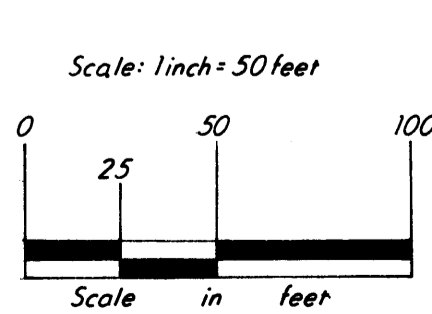
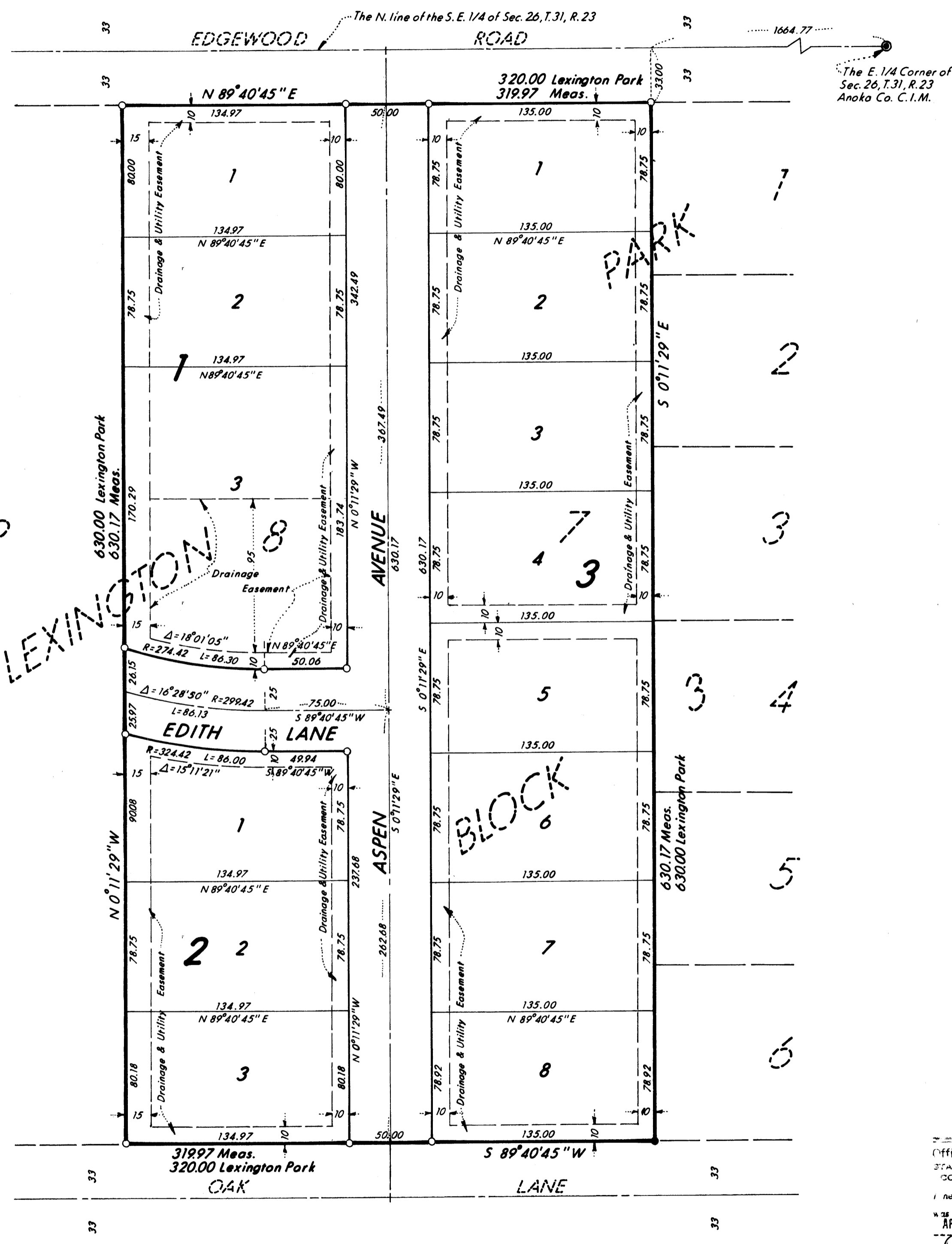


LEXINGTON HEIGHTS SECOND

County of Anoka City of Lexington State of Minnesota



● Denotes iron monument found
○ Denotes iron monument set and marked RLS 10832
Orientation of this bearing system is assumed

KNOW ALL PERSONS BY THESE PRESENTS that Klosner-Goertz Development, Inc., a Minnesota corporation, fee owners, and William M. Lumel and Harriet G. Lumel, husband and wife, mortgagee, of the following described property situated in the County of Anoka and the State of Minnesota:

Lots 7 and 8, Block 3, Lexington Park, Anoka County, Minnesota.

have caused the same to be surveyed and platted as LEXINGTON HEIGHTS SECOND and do hereby donate and dedicate to the public for public use forever the thoroughfares and drainage and utility easements as shown on the plat. In witness whereof said Klosner-Goertz Development, Inc. has caused these presents to be signed by its proper officer this 19th day of April, 1984. In witness whereof said William M. Lumel and Harriet G. Lumel have caused these presents to be signed this 19th day of April, 1984.

SIGNED:

Klosner-Goertz Development, Inc.

Paul J. Goertz
Rockne J. Goertz, President

William M. Lumel
William M. Lumel

Harriet G. Lumel
Harriet G. Lumel

STATE OF MINNESOTA
COUNTY OF Anoka

The foregoing instrument was acknowledged before me this 19th day of April, 1984 by Rockne J. Goertz, President of Klosner-Goertz Development, Inc., a Minnesota corporation, on behalf of the corporation.

James M. Neilson
Notary Public, Anoka County, Minnesota
My Commission Expires July 25, 1984

STATE OF MINNESOTA
COUNTY OF Anoka

The foregoing instrument was acknowledged before me this 19th day of April, 1984 by William M. Lumel and Harriet G. Lumel, husband and wife.

James M. Neilson
Notary Public, Anoka County, Minnesota
My Commission Expires July 25, 1984

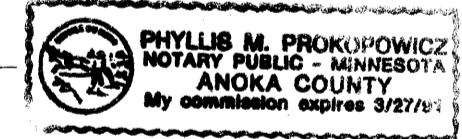
I, Ron Murphy, hereby certify that I have surveyed and platted the property described in the dedication of this plat as LEXINGTON HEIGHTS SECOND, that this plat is a correct representation of said survey; that all distances are correctly shown on the plat in figures denoting feet and hundredths of a foot; that all monuments have been correctly placed in the ground as shown; that the outside boundary lines are correctly shown on the plat; and that there are no wetlands, easements or public highways other than as shown thereon.

Ron Murphy
Ron Murphy, Minnesota Registered Land Surveyor
License No. 10832

STATE OF MINNESOTA
COUNTY OF ANOKA

The foregoing instrument was acknowledged before me this 19th day of April, 1984, by Ron Murphy, Land Surveyor.

Phyllis M. Prokopowicz
Phyllis M. Prokopowicz
Notary Public, Anoka County, Minnesota
My Commission Expires March 27, 1991



We hereby certify that the City Council of the City of Lexington, Anoka County, Minnesota has duly accepted and approved the plat of LEXINGTON HEIGHTS SECOND at a regular meeting thereof held this 19th day of April, 1984.

Harold Sweet
Mayor

Brian W. Krutz
Clerk

This plat was checked and approved on this 23rd day of April, 1984.

"NO DELINQUENT TAXES AND TRANSFER ENTERED"

April 23 1984
Charles R. Lippert
Auditor, Anoka County

BY Deputy
Deputy

Blond W. Anderson
County Surveyor, Anoka County, Minnesota

I HEREBY CERTIFY THAT THE TAXES PAYABLE IN THE YEAR 1984 ON THE LANDS DESCRIBED WITHIN ARE PAID
Donald R. Boyle
Anoka County Treasurer



133516
OFFICE OF THE COUNTY AUDITOR
STATE OF MINNESOTA
COUNTY OF ANOKA
I hereby certify that the within instrument was filed in the office of the Auditor on the day of APR 23 1984 at 12:20 o'clock P.M.
By Paul Lippert
Auditor



CONSULTING ENGINEERS & LAND SURVEYORS

ACD 12359 APR 23 84 2050..