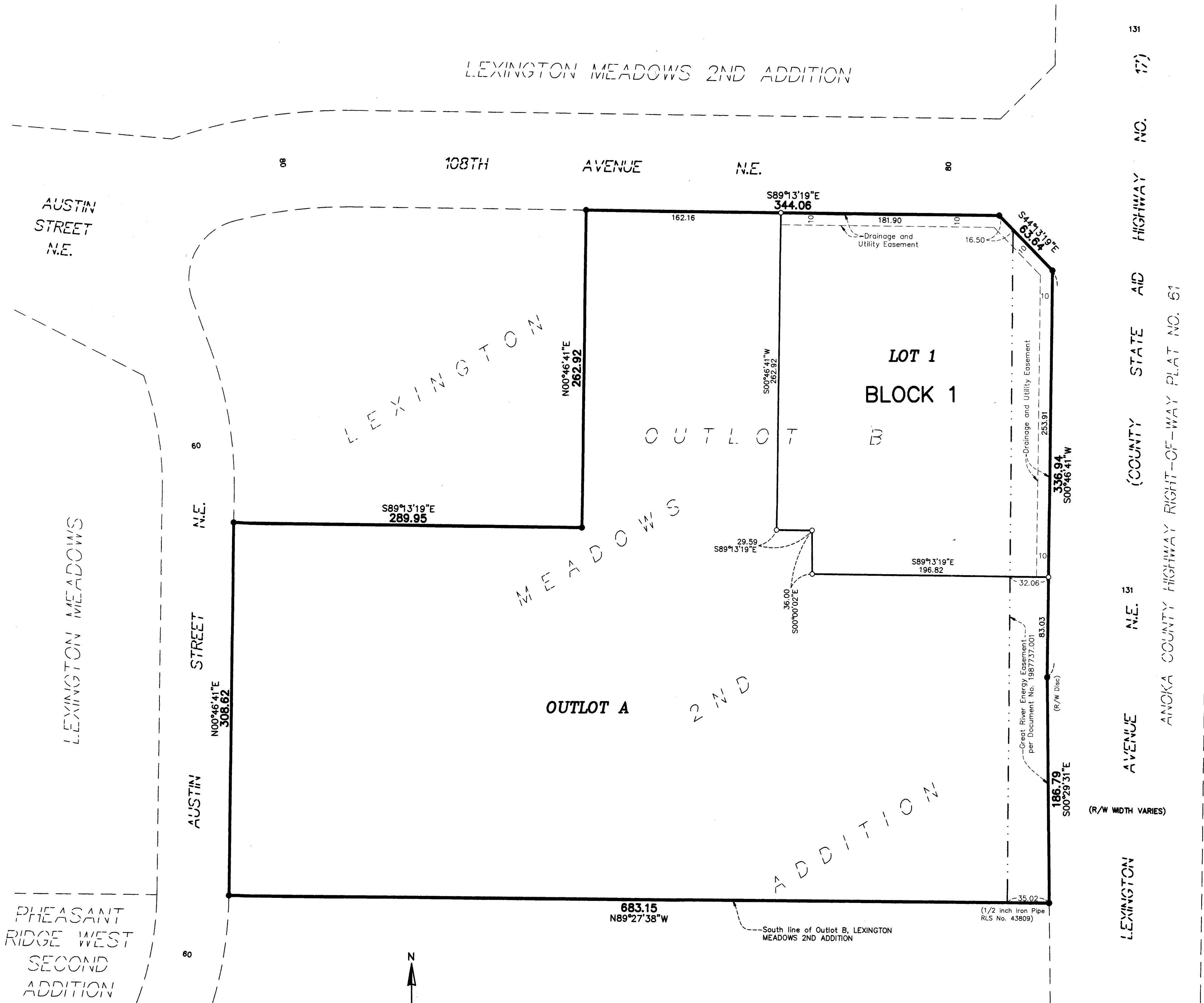


# LEXINGTON MEADOWS 3RD ADDITION

CITY OF BLAINE  
COUNTY OF ANOKA  
SEC. 23, TWP. 31, RGE. 23



VILLAGE  
RIDGE  
PLEASANT

KNOW ALL PERSONS BY THESE PRESENTS: That Lexington Meadows LLC, a Minnesota limited liability company, owner of the following described property:

Outlot B, LEXINGTON MEADOWS 2ND ADDITION, Anoka County, Minnesota

Has caused the same to be surveyed and platted as LEXINGTON MEADOWS 3RD ADDITION and does hereby dedicate to the public for public use the drainage and utility easements as shown on this plat.

In witness whereof said Lexington Meadows LLC, a Minnesota limited liability company, has caused these presents to be signed by its proper officer this 17th day of December, 2020.

LEXINGTON MEADOWS LLC  
By: WELLINGTON PROPERTIES LLC, its Manager  
*[Signature]*  
Stephen B. Wellington, Jr., Chief Manager

STATE OF MINNESOTA  
COUNTY OF RAMSEY

This instrument was acknowledged before me on December 17, 2020 by Stephen B. Wellington, Jr., Chief Manager of Wellington Properties LLC, a Minnesota limited liability company, manager of Lexington Meadows LLC, a Minnesota limited liability company.

Beth Huizinga (Signed)  
Beth Huizinga (Printed)  
Notary Public, Washington County, MN  
My commission expires 1-31-23

I, Thomas R. Balluff do hereby certify that this plat was prepared by me or under my direct supervision; that I am a duly Licensed Land Surveyor in the State of Minnesota; that this plat is a correct representation of the boundary survey; that all mathematical data and labels are correctly designated on this plat; that all monuments depicted on this plat have been, or will be correctly set within one year; that all water boundaries and wet lands, as defined in Minnesota Statutes, Section 505.01, Subd. 3, as of the date of this certificate are shown and labeled on this plat; and all public ways are shown and labeled on this plat.

Dated this 17th day of NOVEMBER, 2020

*[Signature]*  
Thomas R. Balluff, Licensed Land Surveyor  
Minnesota License No. 40361

STATE OF Minnesota  
COUNTY OF Anoka

This instrument was acknowledged before me on November 17, 2020 by Thomas R. Balluff.

Cynthia J. Morica (Signed)  
Cynthia J. Morica (Printed)  
Notary Public, Hennepin County, Minnesota  
My commission expires January 31, 2025

CITY COUNCIL, CITY OF BLAINE, MINNESOTA

This plat of LEXINGTON MEADOWS 3RD ADDITION was approved and accepted by the City Council of the City of Blaine, Minnesota at a regular meeting thereof held this 15th day of June, 2020 and said plat is in compliance with the provisions of Minnesota Statutes, Section 505.03, Subd. 2.

CITY COUNCIL, CITY OF BLAINE, MINNESOTA  
*[Signature]* Mayor  
By: *[Signature]* Clerk

COUNTY SURVEYOR

I hereby certify that in accordance with Minnesota Statutes, Section 505.021, Subd. 11, this plat has been reviewed and approved this 29th day of December, 2020.

By: Charles F. Gitzen  
Charles F. Gitzen  
Anoka County Surveyor

COUNTY AUDITOR/TREASURER

Pursuant to Minnesota Statutes, Section 505.021, Subd. 9, taxes payable in the year 2020 on the land hereinbefore described have been paid. Also, pursuant to Minnesota Statutes, Section 272.12, there are no delinquent taxes and transfer entered this 24th day of December, 2020.

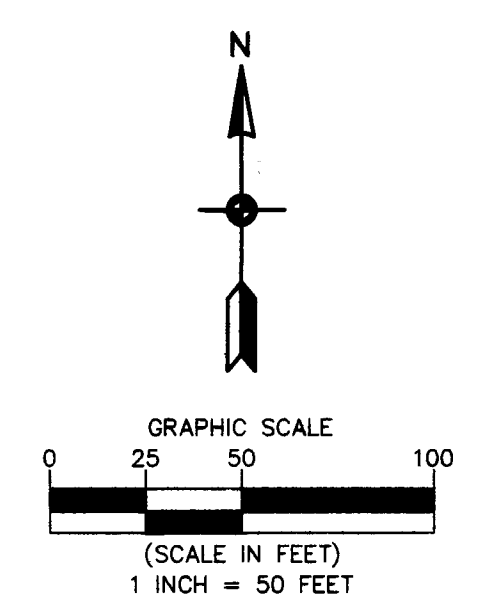
Pamela J LeBlanc  
Property Tax Administrator  
By: *[Signature]* Deputy

COUNTY RECORDER/REGISTRAR OF TITLES  
County of Anoka, State of Minnesota

I hereby certify that this plat of LEXINGTON MEADOWS 3RD ADDITION was filed in the office of the County Recorder/Registrar of Titles for public record on this 24th day of December, 2020 at 1:14 o'clock P.M. and was duly recorded as Document Number 2295516.003

Pamela J LeBlanc  
County Recorder/Registrar of Titles  
By: *[Signature]* Deputy

\$56.00



- Denotes 5/8 inch by 14 inch Rebar, set or to be set within one year of recording of this plat and marked with license number 40361
- Denotes Found 5/8 inch Rebar marked with Cap No. 40361, unless otherwise noted

For the purposes of this plat, the South line of Outlot B, LEXINGTON MEADOWS 2ND ADDITION is assumed to have a bearing of North 89 degrees 27 minutes 38 seconds West