

LEXINGTON MEADOWS 4TH ADDITION

CITY OF BLAINE
COUNTY OF ANOKA
SEC. 23, TWP. 31, RGE. 23

KNOW ALL PERSONS BY THESE PRESENTS: That Lexington Meadows LLC, a Minnesota limited liability company, owner of the following described property:

Outlot A, LEXINGTON MEADOWS 2ND ADDITION, according to the recorded plat thereof, Anoka County, Minnesota.

Has caused the same to be surveyed and platted as LEXINGTON MEADOWS 4TH ADDITION and does hereby dedicate to the public for public use the drainage and utility easements as shown on this plat. Also dedicating to the County of Anoka the right of access onto County State Aid Highway No. 17 as shown on this plat.

In witness whereof said Lexington Meadows LLC, a Minnesota limited liability company, has caused these presents to be signed by its proper officer this 17th day of August, 2021.

LEXINGTON MEADOWS LLC
By: WELLINGTON PROPERTIES LLC, its Manager

[Signature]
Stephen B. Wellington, Jr., Chief Manager

STATE OF Minnesota
COUNTY OF Ramsey

This instrument was acknowledged before me on August 17, 2021 by Stephen B. Wellington, Jr., Chief Manager of Wellington Properties LLC, a Minnesota limited liability company, manager of Lexington Meadows LLC, a Minnesota limited liability company.

Beth Huizinga (Signed)

Beth Huizinga (Printed)

Notary Public, Washington County, Minnesota
My commission expires January 31, 2023

I, Thomas R. Balluff do hereby certify that this plat was prepared by me or under my direct supervision; that I am a duly Licensed Land Surveyor in the State of Minnesota; that this plat is a correct representation of the boundary survey; that all mathematical data and labels are correctly designated on this plat; that all monuments depicted on this plat have been, or will be correctly set within one year; that all water boundaries and wet lands, as defined in Minnesota Statutes, Section 505.01, Subd. 3, as of the date of this certificate are shown and labeled on this plat; and all public ways are shown and labeled on this plat.

Dated this 12th day of August, 2021.

[Signature]
Thomas R. Balluff, Licensed Land Surveyor
Minnesota License No. 40361

STATE OF Minnesota
COUNTY OF Anoka

This instrument was acknowledged before me on August 12, 2021 by Thomas R. Balluff.

Cynthia J. Morical (Signed)

Cynthia J. Morical (Printed)

Notary Public, Hennepin County, Minnesota
My commission expires January 31, 2025

CITY COUNCIL, CITY OF BLAINE, MINNESOTA

This plat of LEXINGTON MEADOWS 4TH ADDITION was approved and accepted by the City Council of the City of Blaine, Minnesota at a regular meeting thereof held this 7th day of July, 2021, and said plat is in compliance with the provisions of Minnesota Statutes, Section 505.03, Subd. 2.

CITY COUNCIL, CITY OF BLAINE, MINNESOTA

By: [Signature] Mayor
By: [Signature] Clerk

COUNTY SURVEYOR

I hereby certify that in accordance with Minnesota Statutes, Section 505.021, Subd. 11, this plat has been reviewed and approved this 16th day of September, 2021.

By: [Signature]
David M. Ziegler
Anoka County Surveyor

COUNTY AUDITOR/TREASURER

Pursuant to Minnesota Statutes, Section 505.021, Subd. 9, taxes payable in the year 2021 on the land hereinbefore described have been paid. Also, pursuant to Minnesota Statutes, Section 272.12, there are no delinquent taxes and transfer entered this 16 day of September, 2021.

Pamela J LeBlanc
Property Tax Administrator
By: [Signature] Deputy

COUNTY RECORDER/REGISTRAR OF TITLES

County of Anoka, State of Minnesota

I hereby certify that this plat of LEXINGTON MEADOWS 4TH ADDITION was filed in the office of the County Recorder/Registrar of Titles for public record on this 16 day of September, 2021, at 12:54 o'clock P.M. and was duly recorded as Document Number 2336737.002.

Pamela J LeBlanc
County Recorder/Registrar of Titles
By: [Signature] Deputy

456

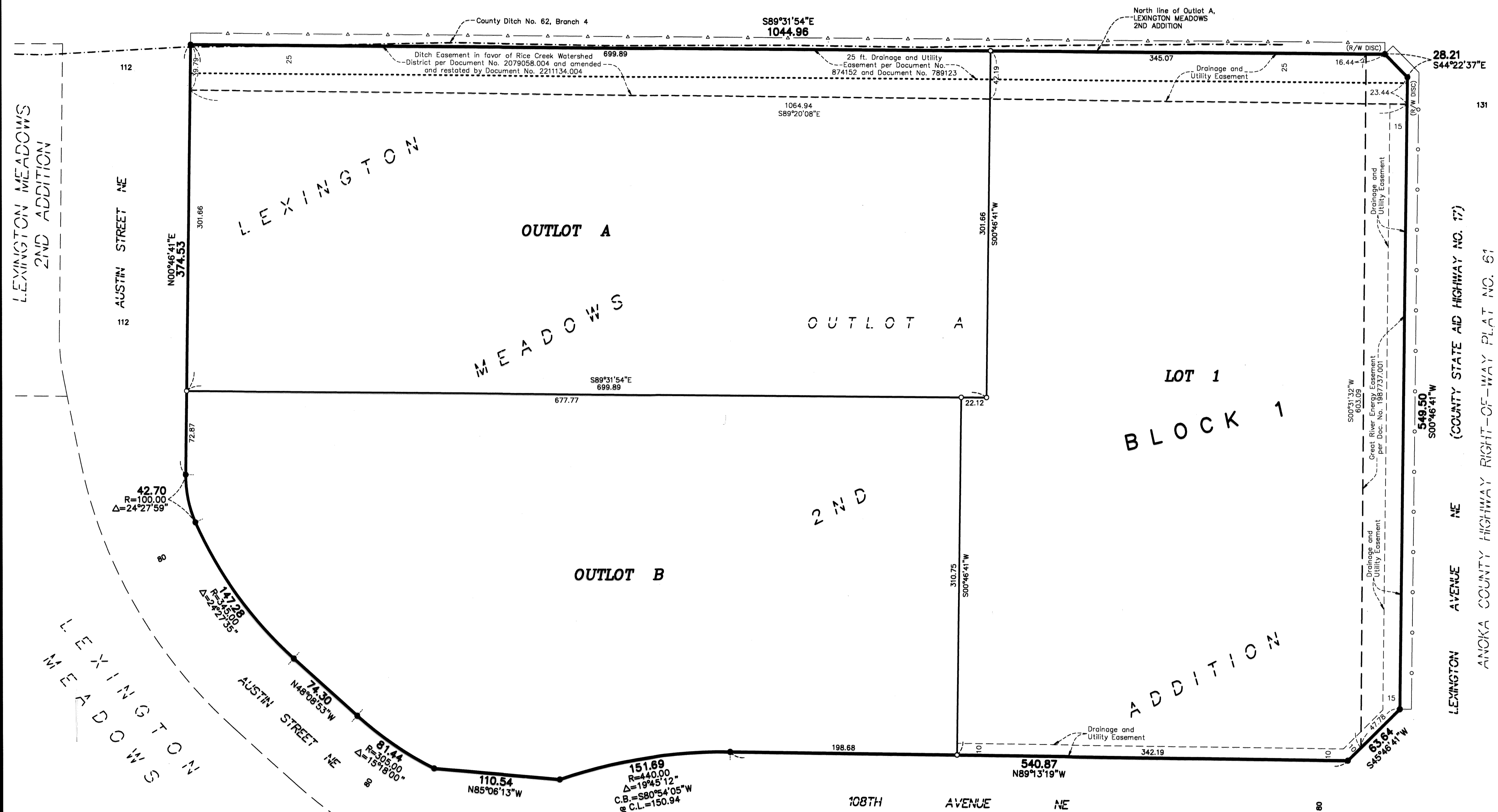


LEXINGTON MEADOWS 4TH ADDITION

NORTH MEADOWS

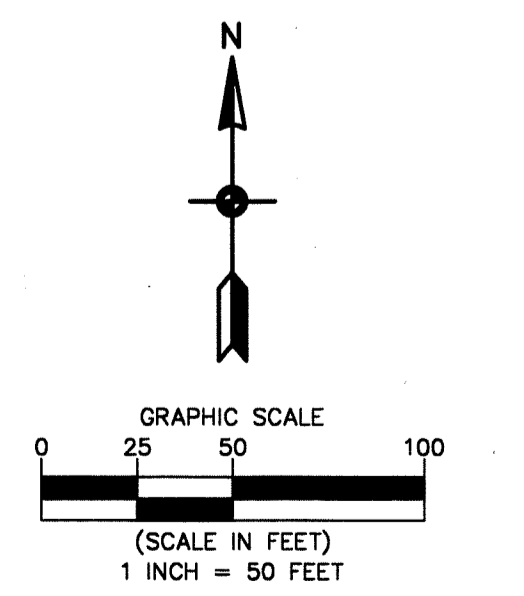
CITY OF BLAINE
COUNTY OF ANOKA
SEC. 23, TWP. 31, RGE. 23

109TH AVENUE NE
(COUNTY STATE AID HIGHWAY NO. 12)



For the purposes of this plat, the North line of Outlot A, LEXINGTON MEADOWS 2ND ADDITION is assumed to have a bearing of South 89 degrees 31 minutes 54 seconds East.

- Denotes 5/8 inch by 14 inch Rebar, set or to be set within one year of recording of this plat and marked with license number 40361
- Denotes Found 5/8 inch by 14 inch Rebar, marked with license number 40361, unless otherwise noted
- ▲— Denotes Right of Access dedicated to Anoka County per plat of LEXINGTON MEADOWS
- Denotes Right of Access dedicated to Anoka County



LEXINGTON MEADOWS 2ND ADDITION

LEXINGTON MEADOWS 3RD ADDITION

