

LINO LAKES MARKET PLACE 3RD ADDITION

BK 74 PG 48

CITY OF LINO LAKES
COUNTY OF ANOKA
SEC. 8, TWP. 31, R. 22

KNOW ALL MEN BY THESE PRESENTS: That Ryan Companies US, Inc., A Minnesota corporation, fee owner of the following described property situated in the County of Anoka, State of Minnesota, to wit:

Lot 6, Block 1, LINO LAKES MARKET PLACE, according to the recorded plat thereof, Anoka County, Minnesota.

AND

Lot 3, Block 1, LINO LAKES MARKET PLACE 2ND ADDITION, according to the recorded plat thereof, Anoka County, Minnesota.

Has caused the same to be surveyed and platted as LINO LAKES MARKET PLACE 3RD ADDITION and does hereby donate and dedicate to the public for public use forever the easements for drainage and utility purposes only, as shown on the plat.

In witness whereof said Ryan Companies US, Inc., a Minnesota corporation, has caused these presents to be signed by its proper officer this 10 day of December, 2008.

SIGNED: RYAN COMPANIES US, INC.

By [Signature], as SVP

STATE OF MINNESOTA
COUNTY OF Hennepin

The foregoing instrument was acknowledged before me this 10 day of December, 2008, by W.J. Mchale as SVP of Ryan Companies US, Inc., a Minnesota corporation, on behalf of the corporation.

[Signature]
Notary Public, Hennepin County, Minnesota
My Commission Expires 11/17/10

Notary Public, Hennepin County, Minnesota
My Commission Expires 11/17/10

I, Nathan H. Carlson, a duly Licensed Land Surveyor under the laws of the State of Minnesota, do hereby certify that I have surveyed or directly supervised the survey of the property described on this plat; prepared this plat or directly supervised the preparation of this plat of LINO LAKES MARKET PLACE 3RD ADDITION; that this plat is a correct representation of the boundary survey; that all mathematical data and labels are correctly designated on this plat; that all monuments depicted on the plat have been, or will be correctly set within one year as indicated on this plat; that all water boundaries and wet lands, as defined in Minnesota Statutes, Section 505.01, Subd. 3, as of the date of this certificate are shown and labeled on this plat; and all public ways are shown and labeled on this plat.

Dated this 9TH day of December, 2008.

[Signature]
Nathan H. Carlson, Professional Land Surveyor
Minnesota License No. 45873

STATE OF MINNESOTA
COUNTY OF Stearns

The foregoing surveyor's certificate was acknowledged before me this 09TH day of December, 2008, by Nathan H. Carlson, Professional Land Surveyor.

[Signature]
[Signature]

Notary Public, Stearns County, Minnesota
My Commission Expires Jan. 21, 2010

LINO LAKES, MINNESOTA

This plat of LINO LAKES MARKET PLACE 3RD ADDITION was approved and accepted by the City Council of the City of Lino Lakes, Minnesota at a regular meeting thereof held this 24TH day of NOVEMBER, 2008, and said plat is in compliance with the provisions of Minnesota Statutes, Section 505.03, Subdivision 2.

LINO LAKES, MINNESOTA

By [Signature], Mayor By [Signature], Clerk

ANOKA COUNTY SURVEYOR

This plat has been checked and approved this 21TH day of DECEMBER, 2008.

By [Signature]
Larry D. Hildm, Anoka County Surveyor

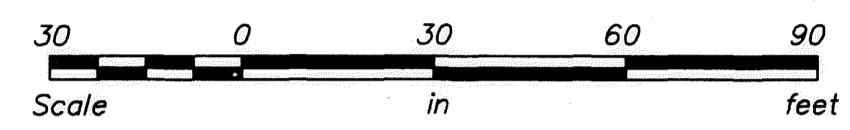
Doc# 2004582.001
OFFICE OF COUNTY RECORDER
STATE OF MINNESOTA, COUNTY OF ANOKA
I hereby certify that the within instrument was filed in this office for record on the 24 Dec AD, 2008 at 8:22 o'clock AM, and was duly recorded in book 74 page 48
Maureen J. Devine
County Recorder

I HEREBY CERTIFY THAT THE CURRENT AND DELINQUENT TAXES ON THE LANDS DESCRIBED WITHIN ARE PAID AND THE TRANSFER IS ENTERED
Dec. 24, 2008
MAUREEN J. DEVINE
PROPERTY TAX ADMINISTRATOR
BY [Signature]
DEPUTY PROPERTY TAX ADMINISTRATOR

By LTM

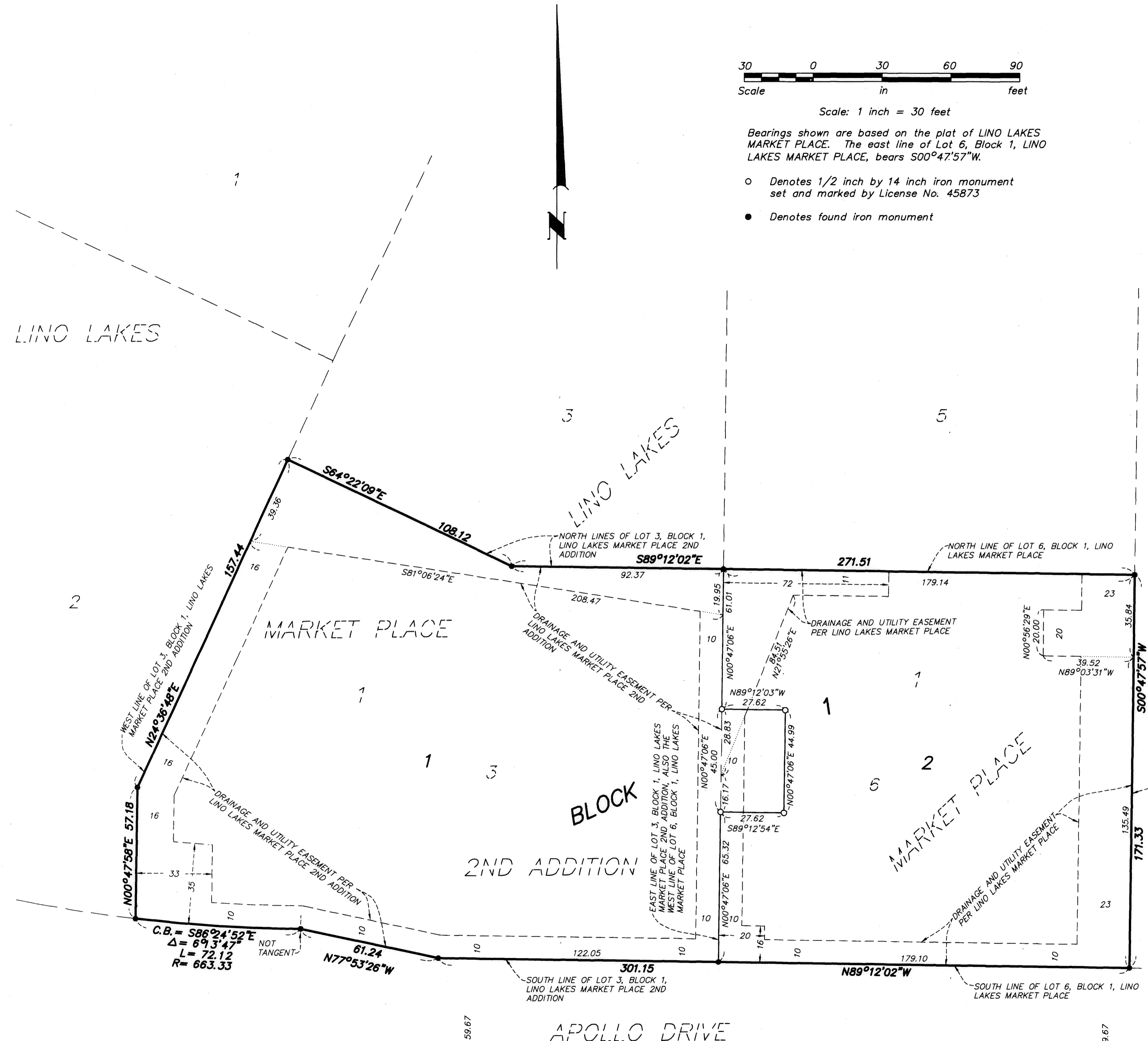
\$ 56.00

Westwood
Professional Services, Inc.



Bearings shown are based on the plat of LINO LAKES MARKET PLACE. The east line of Lot 6, Block 1, LINO LAKES MARKET PLACE, bears S00°47'57"W.

- Denotes 1/2 inch by 14 inch iron monument set and marked by License No. 45873
- Denotes found iron monument



LINO LAKES
COMMERCIAL
DEVELOPMENT