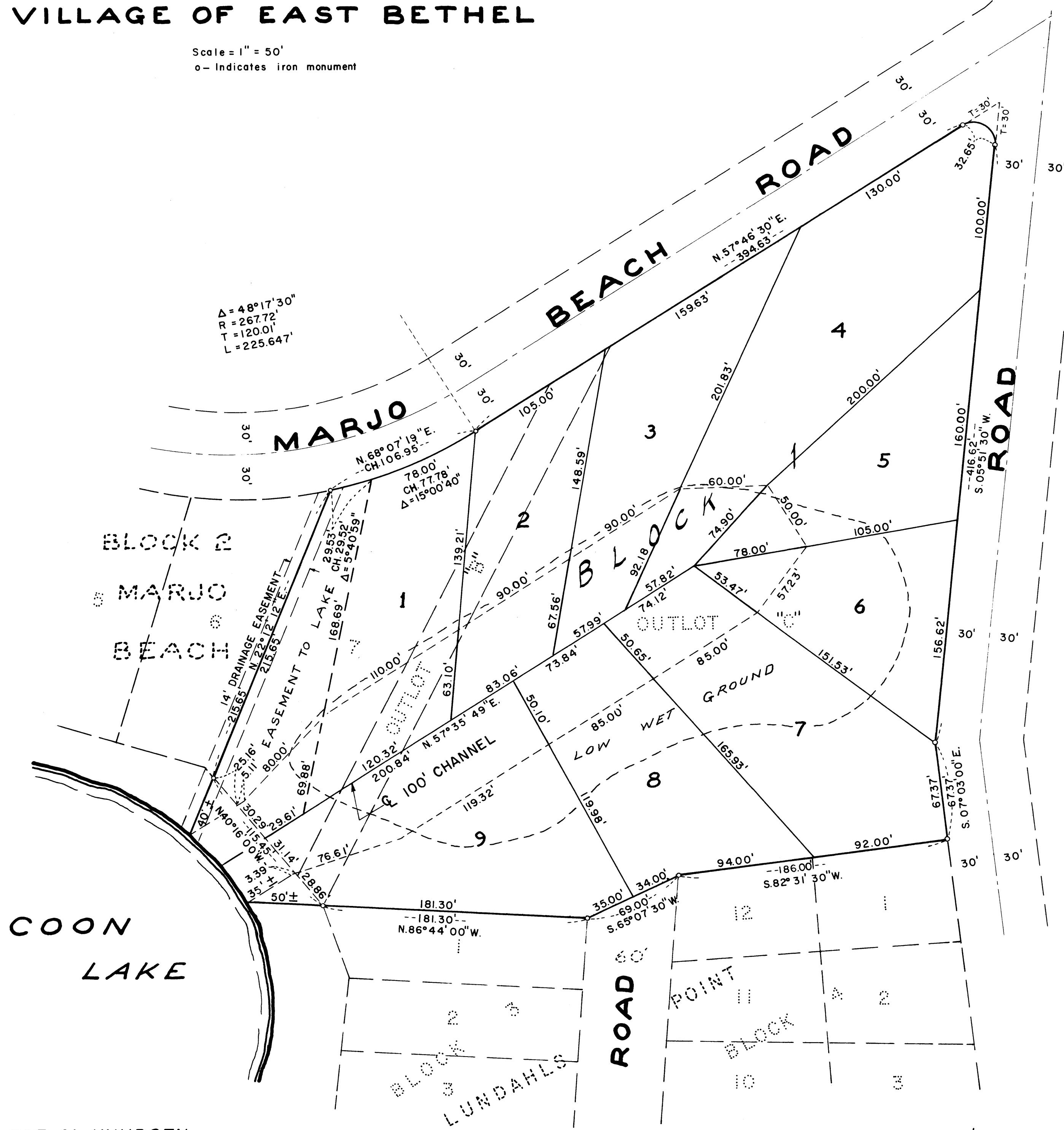


LITTLE TONKA BAY

VILLAGE OF EAST BETHEL

ANOKA COUNTY, MINNESOTA.

Scale = 1" = 50'
o - Indicates iron monument



ROBERT M. KNUDSEN
LAND SURVEYOR

Checked and approved this 29th day of August
1961 A.D.

Richard W. Anderson
Anoka County Surveyor

Know all men by these presents that T & K Development Co. Inc., a Minnesota Corporation, owners and proprietors of the following described property situated in the County of Anoka, State of Minnesota, to-wit: Lot 7 and Outlots B and C, all in Block 2, MARJO BEACH, Anoka County, Minnesota; have caused the same to be surveyed and platted as LITTLE TONKA BAY and do hereby donate and dedicate to the public for public use forever the easement to the lake as shown on the annexed plat. In witness whereof we have hereunto set our hands and seal this 29th day of August 1961 A.D.

In the presence of;
Lloyd E. Tagg witness
Lloyd E. Tagg Resident
James T. Knutson Secretary
James T. Knutson Treasurer

State of Minnesota)
County of Anoka) ss

On this 29th day of August 1961 A.D. before me, a notary public within and for said County and State, personally appeared Lloyd E. Tagg and James T. Knutson, to me personally known, who being by me, each duly sworn, did say that they are, respectively, the President and Sec-Treas. of the T & K Development Co. Inc. the corporation named in the foregoing instrument; that the seal affixed to said instrument is the corporation seal of said corporation; and that said instrument was signed and sealed in behalf of said corporation by authority of its Board of Directors and said Lloyd E. Tagg and James T. Knutson acknowledge said instrument to be the free act and deed of said corporation.

Jean Peters
Notary Public, Anoka County, Minnesota
My commission expires _____

State of Minnesota)
County of Anoka) ss

I do hereby certify that I have surveyed and platted the property described on this plat as LITTLE TONKA BAY; that this plat is a correct representation of said survey; that all distances are correctly shown on said plat in feet and decimals of a foot; that the monuments for guidance of future surveys have been correctly placed in the ground as shown on the plat; that the outside boundary lines are correctly designated on the plat; that the topography of the land is correctly shown on the plat; and that there are no wet lands or public highways to be designated on said plat other than shown thereon.

Surveyor *Robert M. Knudsen*
Minnesota Registration No. 5135

State of Minnesota)
County of Anoka) ss

Above certificates subscribed and sworn to before me, a notary public within and for said County and State on this 29th day of August 1961 A.D.

Jean Peters
Notary Public, Anoka County, Minnesota
My commission expires _____

The annexed plat of Little Tonka Bay was approved and accepted by the Village Council of the Village of East Bethel, Minnesota, at a regular meeting thereof held this 6th day of September, 1961 A.D.

Village Council of East Bethel Minnesota
John E. Anderson Mayor
Andrea B. Thibault Clerk

OFFICE OF REGISTER OF DEEDS
STATE OF MINNESOTA, COUNTY OF ANOKA

I hereby certify that the within instrument was filed in this office for record on the 29th day of SEP. 20 1961 A.D., 1961 at 7 o'clock P.M., and was duly recorded in book 22 of Platango 3.

Margaret Russell
Register of Deeds
By Margaret Russell Deputy

TAXES PAID

This 20 day of Sept. 1961
Bernard W. Campbell
Auditor, Anoka County, Minn.
By E. E. Rags Deputy

HEREBY CERTIFY THAT TAXES FOR THE YEAR 1960
ON THE LANDS DESCRIBED WITHIN ARE PAID
By Walter A. Sawyer
County Treasurer