

LOCKE POINTE

City of Fridley
County of Anoka
Sec. 11, T. 30, R. 24

KNOW ALL PERSONS BY THESE PRESENTS: That The City of Fridley Housing and Redevelopment Authority, a public body, corporate and politic, owner of the following described property:

Outlots E and F, LOCKE PARK POINTE, Anoka County, Minnesota.

Has caused the same to be surveyed and platted as LOCKE POINTE and does hereby dedicate to the public for public use the public ways and the drainage and utility easements as created by this plat.

In witness whereof said The City of Fridley Housing and Redevelopment Authority, a public body, corporate and politic, has caused these presents to be signed by its proper officers this 13th day of June, 2018.

THE CITY OF FRIDLEY HOUSING AND REDEVELOPMENT AUTHORITY

Pat Gabel
Pat Gabel, Chairperson

Walter T. Wysopal
Walter T. Wysopal, Executive Director

STATE OF MINNESOTA
COUNTY OF Anoka

This instrument was acknowledged before me this 13th day of June, 2018 by Pat Gabel the Chairperson and Walter T. Wysopal the Executive Director of The City of Fridley Housing and Redevelopment Authority, a public body, corporate and politic, on behalf of the City.

Roberta S. Collins
Roberta S. Collins
Notary Public, Anoka County, Minnesota
My Commission Expires 1/31/2020

I Eric B. Lindgren do hereby certify that this plat was prepared by me or under my direct supervision; that I am a duly Licensed Land Surveyor in the State of Minnesota; that this plat is a correct representation of the boundary survey; that all mathematical data and labels are correctly designated on this plat; that all monuments depicted on this plat have been, or will be correctly set within one year; that all water boundaries and wet lands, as defined in Minnesota Statutes, Section 505.01, Subd. 3, as of the date of this certificate are shown and labeled on this plat; and all public ways are shown and labeled on this plat.

Dated this 13th day of JUNE, 2018.

Eric B. Lindgren

Eric B. Lindgren, Licensed Land Surveyor
Minnesota License No. 48176

STATE OF MINNESOTA
COUNTY OF ANOKA

This instrument was acknowledged before me this 13th day of June, 2018 by Eric B. Lindgren.

Roberta S. Collins
Roberta S. Collins
Notary Public, Anoka County, Minnesota
My Commission Expires 1/31/2020

CITY COUNCIL, CITY OF FRIDLEY, MINNESOTA

This plat of LOCKE POINTE was approved and accepted by the City Council of the City of Fridley, Minnesota at a regular meeting thereof held this 11th day of June, 2018, and said plat is in compliance with the provisions of Minnesota Statutes, Section 505.03, Subd. 2.

CITY COUNCIL, CITY OF FRIDLEY, MINNESOTA

By: Scott J. Lund, Mayor

By: De W. Wagoner, Clerk

ANOKA COUNTY SURVEYOR

I hereby certify that in accordance with Minnesota Statutes, Section 505.021, Subd. 11, this plat has been reviewed and approved this 19th day of June, 2018.

By: Charles F. Gitzen

Charles F. Gitzen
Anoka County Surveyor

ANOKA COUNTY AUDITOR/TREASURER

Pursuant to Minnesota Statutes, Section 505.021, Subd. 9, taxes payable in the year 2018 on the land hereinbefore described have been paid. Also, pursuant to Minnesota Statutes, Section 272.12, there are no delinquent taxes and transfer entered this 19th day of June, 2018.

Jonell M. Sawyer

Property Tax Administrator

By: J. Patterson, Deputy

ANOKA COUNTY RECORDER/REGISTRAR OF TITLES

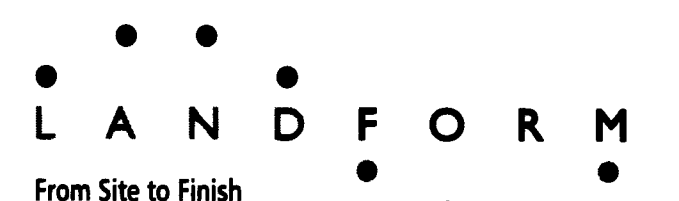
COUNTY OF ANOKA, STATE OF MINNESOTA

I hereby certify that this plat of LOCKE POINTE was filed in the office of the County Recorder/Registrar of Titles for public record on this 19th day of June, 2018, at 13:18 o'clock P.M. and was duly recorded as Document Number 557574.007.

Jonell M. Sawyer

County Recorder/Registrar of Titles

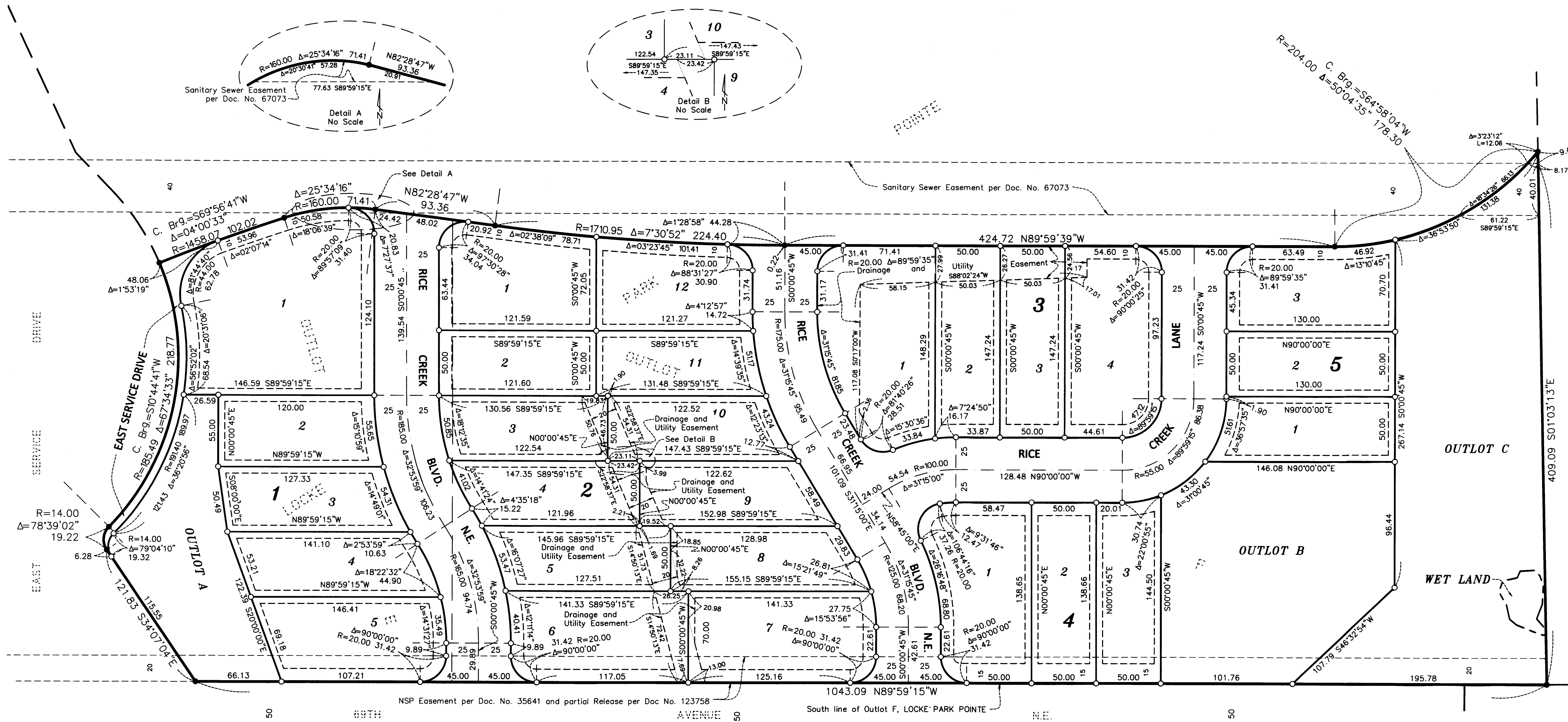
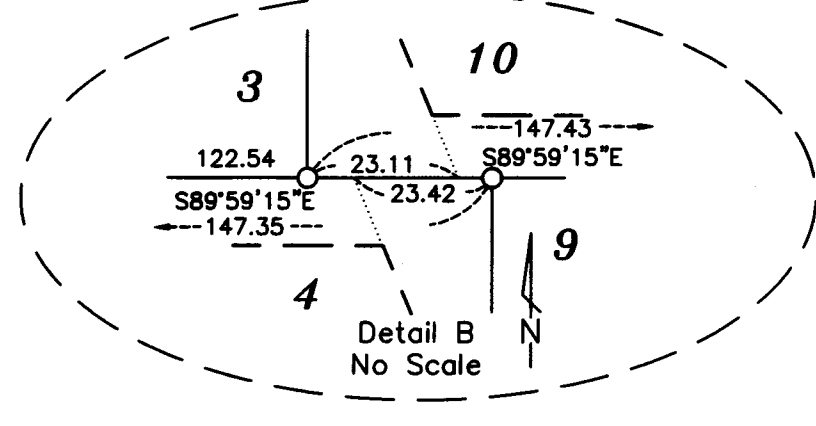
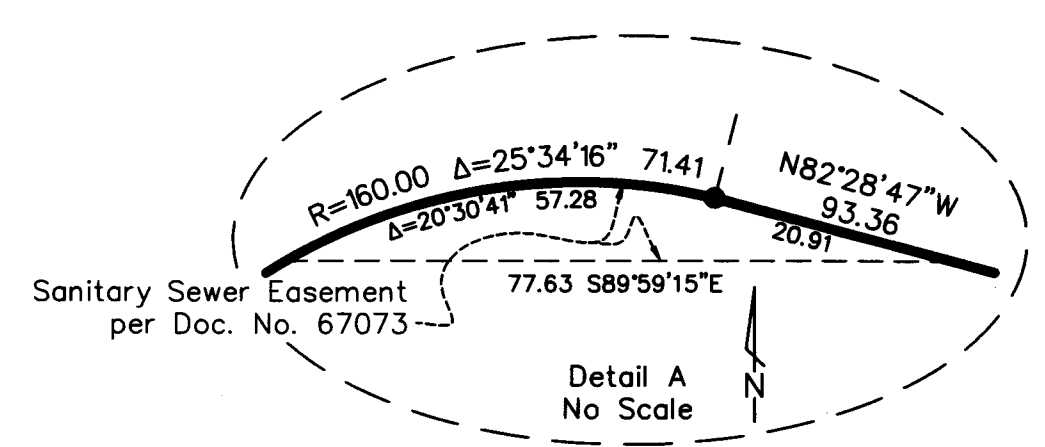
By: J. Patterson, Deputy



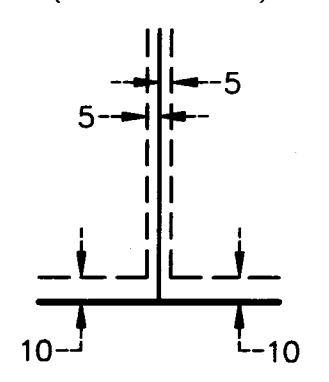
\$56.00

LOCKE POINTE

City of Fridley
County of Anoka
Sec. 11, T. 30, R. 24



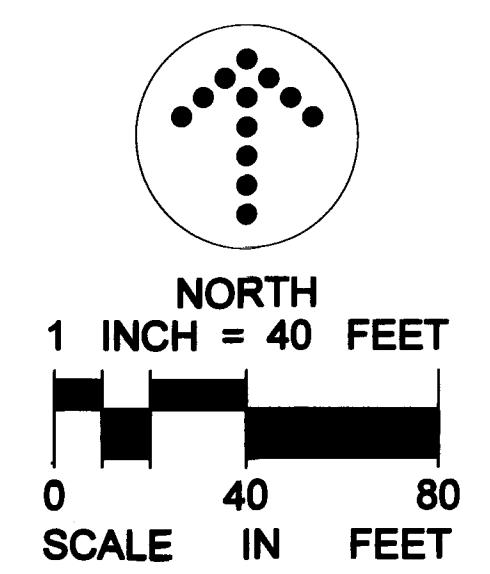
DRAINAGE AND UTILITY EASEMENTS ARE SHOWN THUS:
(Not to Scale)



Being 5 feet in width and adjoining side and rear lot lines, unless otherwise shown, and 10 feet in width and adjoining street lines as shown on the plat.

- Denotes 1/2 inch iron pipe monument found.
- Denotes 1/2 inch by 14 inch iron pipe monument set and marked by License No. 48176.

Bearings shown are based on the south line of Outlot F, LOCKE PARK POINTE which has an assumed bearing of N89°59'15"W.



LANDFORM
From Site to Finish