

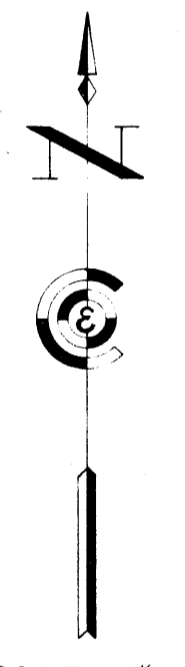
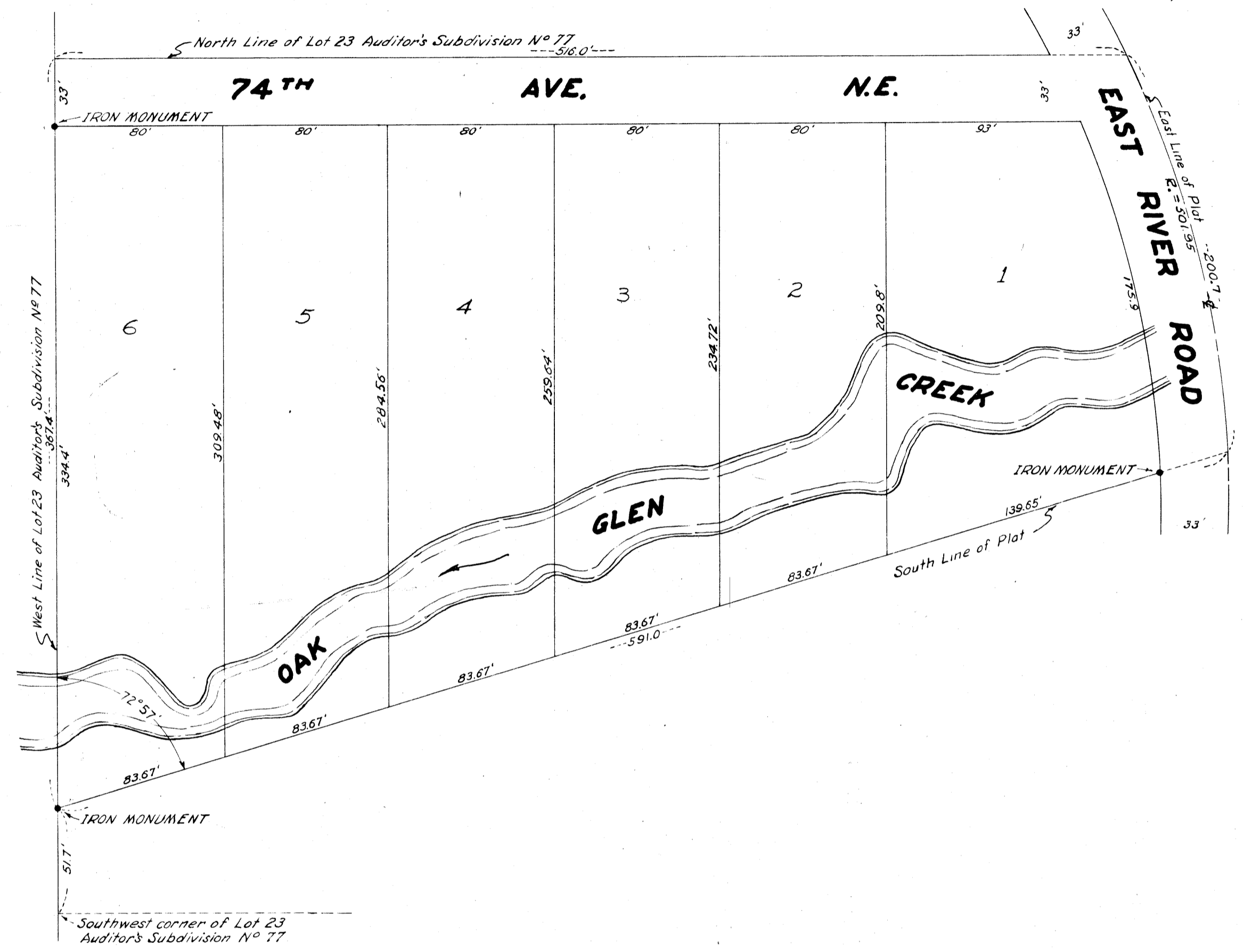
LUND ADDITION

ANOKA COUNTY, MINNESOTA

OFFICE OF REGISTER OF DEEDS,
STATE OF MINNESOTA, COUNTY OF ANOKA
I hereby certify that the within instrument was filed in this office for record on the 22nd day of July, A. D. 1948 at 2:00 p.m., and was duly recorded in book 147 page 272

Eva Brandell
Register of Deeds
by *Carlson & Olsson*
CARTWRIGHT & OLSON
LAND SURVEYORS

KNOW ALL MEN BY THESE PRESENTS: That we, Ralph N. Lund and Lucille A. Lund, his wife, owners and proprietors of the following described property, situate in the County of Anoka, State of Minnesota, to wit: All that part of Lot 23, Auditor's Subdivision No 77, Anoka County, Minnesota, lying North of a line drawn from a point in the West line of said Lot 23, distant 51.7 feet North from the Southwest corner thereof and making an angle to the right from the West line of said Lot 23 of 72° 57' to a point in the Easterly line of said Lot 23, which point is distant 200 feet more or less, Southeastly from the Northeast corner thereof, have caused the same to be surveyed and platted as LUND ADDITION, and do hereby donate and dedicate to the public, for public use forever, the road and avenue as shown on the annexed plat. In witness whereof we have hereunto set our hands and seals on this 28th day of MAY, 1948 A.D.



In the presence of
Grace L. Larson As to R.N.L.
Ida Jane Kearns
Grace L. Larson As to L.A.L.
Ida Jane Kearns

Signed
Ralph N. Lund
Lucille A. Lund

STATE OF MINNESOTA } S.S.
COUNTY OF HENNEPIN }
On this 28th day of MAY 1948 A.D. before me, a Notary Public, within and for said County and State, personally appeared Ralph N. Lund and Lucille A. Lund, his wife, to me personally known to be the persons described in and who executed the foregoing instrument, and they affirm and acknowledge that they executed the same as their own free act and deed.

Burdette W. Bergman
Burdette W. Bergman Notary Public, Hennepin County, Minnesota
My Commission Expires February 14th 1953

I hereby certify that I have surveyed and platted the land described in the dedication on this sheet as LUND ADDITION; that this plat is a correct representation of said survey, that the outside boundaries of the land are correctly designated on said plat; that all distances are correctly shown on said plat in figures in feet and decimals of a foot; that the monuments for guidance of future surveys have been correctly placed in the ground as shown on said plat; that the topography of the land is correctly shown on said plat; and that there are no wet land or public highways to be designated on said plat other than shown thereon.

STATE OF MINNESOTA }
COUNTY OF HENNEPIN }
Above certificate subscribed and sworn to before me, a Notary Public, within and for said County, and State, on this 27th day of May 1948 A.D.

Barnes & Cartwright
Registered Land Surveyor

Clara Mae Dickey
Notary Public, Hennepin County, Minnesota
My Commission Expires April 11, 1948.

This plat was approved and accepted by the Honorable Board of County Commissioners of the County of Anoka, State of Minnesota, on this 12th day of July 1948 A.D.

H. S. Stach
Chairman, Board of County Commissioners, Anoka County, Minnesota

E. A. Carlson
County Auditor, Anoka County, Minnesota

By *G. Skinner* Deputy

This plat was approved as to form and execution on this 10th day of July 1948 A.D.

By *L. Marshall Little*
County Attorney, Anoka County, Minnesota

TAXES PAID
This 22nd day of July 1948
E. A. Carlson
County Auditor, Anoka County, Minn.
Guy Skinner secretary

I hereby certify that taxes for the year 1947 on the lands described within are paid

Walter D. Bowers
County Treasurer
W. D. Bowers