

LUNDE ESTATES SECOND ADDITION

614167.002
CITY OF BLAINE
COUNTY OF ANOKA
SEC. 17, TWP. 31, RNG. 23

KNOW ALL PERSONS BY THESE PRESENTS: That Adam Price, Inc., a Minnesota corporation, owner of the following described property:

Outlot A, LUNDE ESTATES, Anoka County, Minnesota.

Has caused the same to be surveyed and platted as LUNDE ESTATES SECOND ADDITION and does hereby dedicate to the public for public use the drainage and utility easements as shown on this plat.

In witness whereof said Adam Price, Inc., a Minnesota corporation, has caused these presents to be signed by its proper officer this 29th day of November, 2023.

ADAM PRICE, INC.

APC
 Adam Price, President

STATE OF MINNESOTA

COUNTY OF Sherburne

This instrument was acknowledged before me this 29th day of November, 2023 by Adam Price, President, of Adam Price, Inc., a Minnesota corporation, on behalf of the corporation.

J.R. Coyle
 Notary Public, Sherburne County, Minnesota

Lori Guagenberger
 My Commission Expires 01/31/27

I, Craig A. Wenzmann do hereby certify that this plat was prepared by me or under my direct supervision; that I am a duly Licensed Land Surveyor in the State of Minnesota; that this plat is a correct representation of the boundary survey; that all mathematical data and labels are correctly designated on the plat; that all monuments depicted on this plat have been, or will be correctly set within one year; that all water boundaries and wet lands, as defined in Minnesota Statutes, Section 505.01, Subd. 3, as of the date of this certificate are shown and labeled on this plat; and all public ways are shown and labeled on this plat.

Dated this 27th day of NOVEMBER, 2023.

Craig A. Wenzmann
 Craig A. Wenzmann, Licensed Land Surveyor
 Minnesota License No. 47486

STATE OF MINNESOTA

COUNTY OF Sherburne

This instrument was acknowledged before me on 27 day of November, 2023 by Craig A. Wenzmann.

Missie L. Rau
 Notary Public, Sherburne County, Minnesota

Missie L. Rau
 My Commission Expires Jan 31, 2028

CITY COUNCIL, CITY OF BLAINE, MINNESOTA

This plat of LUNDE ESTATES SECOND ADDITION was approved and accepted by the City Council of the City of Blaine, Minnesota at a regular meeting thereof held this 20th day of December, 2023, and said plat is in compliance with the provisions of Minnesota Statutes, Section 505.03, Subd. 2.

CITY COUNCIL, CITY OF BLAINE, MINNESOTA

[Signature] Mayor
[Signature] City Clerk

COUNTY SURVEYOR

I hereby certify that in accordance with Minnesota Statutes, Section 505.021, Subd. 11, this plat has been reviewed and approved this 5th day of December, 2023.

David M. Ziegler
 David M. Ziegler
 Anoka County Surveyor

COUNTY AUDITOR/TREASURER

Pursuant to Minnesota Statutes, Section 505.021, Subd. 9, taxes payable in the year 2023 on the land hereinbefore described have been paid. Also, pursuant to Minnesota Statutes, Section 272.12, there are no delinquent taxes and transfer entered this 5th day of December, 2023.

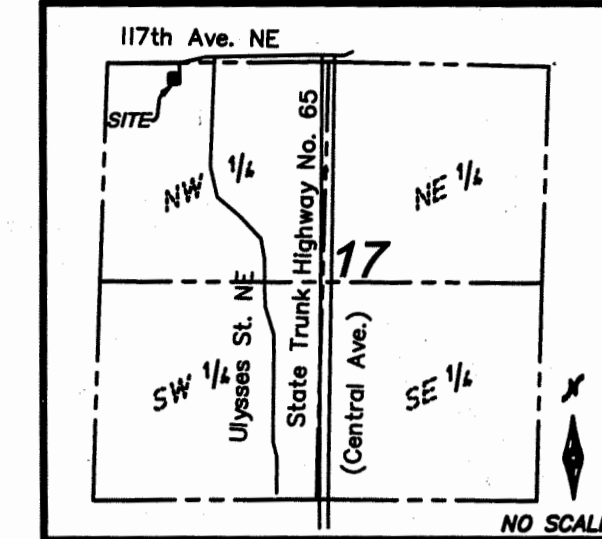
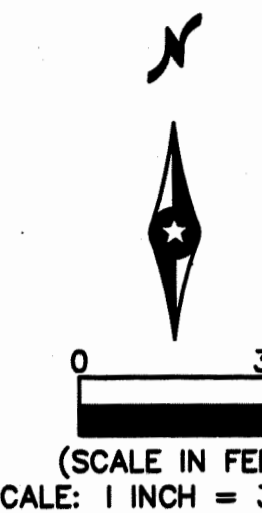
Pamela J. LeBlanc
 By J.M. Buchinger Deputy
 Property Tax Administrator

COUNTY RECORDER/REGISTRAR OF TITLES
 COUNTY OF ANOKA, STATE OF MINNESOTA

I hereby certify that this plat of LUNDE ESTATES SECOND ADDITION was filed in the Office of the County Recorder/Registrar of Titles for public record on this 5th day of December, 2023, at 10:00 o'clock A.M. and was duly recorded as Document No. 614167.002.

Pamela J. LeBlanc
 By J.M. Buchinger Deputy
 County Recorder/Registrar of Titles

- LEGEND:**
- Denotes found iron pipe
 - Denotes 1/2 inch by 14 inch iron pipe with a plastic plug stamped R.L.S. 47486
 - LS 41578 Denotes Jason Rud, LS
 - LS 46179 Denotes David Ziegler, LS
 - Denotes easement
 - - - - - Denotes existing adjoiners



For the purpose of this plat the bearings used are based on the plat of LUNDE ESTATES. The South Line of OUTLOT A, LUNDE ESTATES bears South 89 degrees 49 minutes 32 seconds West.

