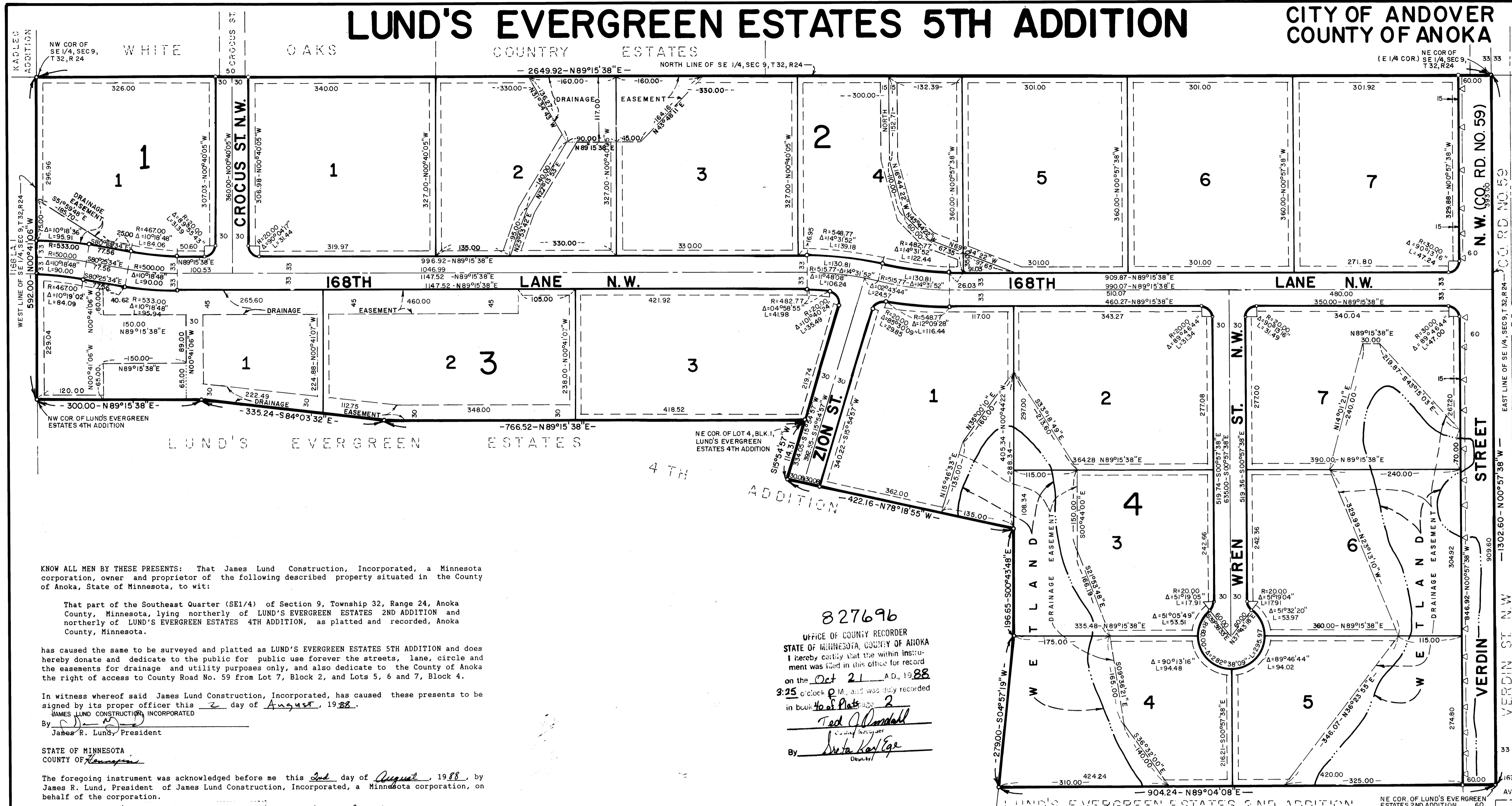


LUND'S EVERGREEN ESTATES 5TH ADDITION

CITY OF ANDOVER
COUNTY OF ANOKA



KNOW ALL MEN BY THESE PRESENTS: That James Lund Construction, Incorporated, a Minnesota corporation, owner and proprietor of the following described property situated in the County of Anoka, State of Minnesota, to wit:

That part of the Southeast Quarter (SE 1/4) of Section 9, Township 32, Range 24, Anoka County, Minnesota, lying northerly of LUND'S EVERGREEN ESTATES 2ND ADDITION and northerly of LUND'S EVERGREEN ESTATES 4TH ADDITION, as platted and recorded, Anoka County, Minnesota.

has caused the same to be surveyed and platted as LUND'S EVERGREEN ESTATES 5TH ADDITION and does hereby donate and dedicate to the public for public use forever the streets, lane, circle and the easements for drainage and utility purposes only, and also dedicate to the County of Anoka the right of access to County Road No. 59 from Lot 7, Block 2, and Lots 5, 6 and 7, Block 4.

In witness whereof said James Lund Construction, Incorporated, has caused these presents to be signed by its proper officer this 2 day of August, 1988.

JAMES LUND CONSTRUCTION, INCORPORATED
By James R. Lund, President

STATE OF MINNESOTA
COUNTY OF HENNEPIN

The foregoing instrument was acknowledged before me this 2nd day of August, 1988, by James R. Lund, President of James Lund Construction, Incorporated, a Minnesota corporation, on behalf of the corporation.

MARILYN LINDSAY
NOTARY PUBLIC-MINNESOTA
HENNEPIN COUNTY
MY COMM. EXP. 01/08/94

Marilyn Lindsay
Notary Public, Hennepin County, Minnesota
My Commission expires 1/8/94

I hereby certify that I have surveyed and platted the property described on this plat as LUND'S EVERGREEN ESTATES 5TH ADDITION; that this plat is a correct representation of said survey; that all distances are correctly shown on the plat in feet and hundredths of a foot; that all monuments have been correctly placed in the ground as shown; that the outside boundary lines are correctly designated on the plat.

Thomas H. Veenker
Thomas H. Veenker, Land Surveyor
Minnesota License Number 12254

STATE OF MINNESOTA
COUNTY OF HENNEPIN

The foregoing Surveyor's Certificate was acknowledged before me this 2nd day of August, 1988, by Thomas H. Veenker, Land Surveyor.

MARILYN LINDSAY
NOTARY PUBLIC-MINNESOTA
HENNEPIN COUNTY
MY COMM. EXP. 01/08/94

Marilyn Lindsay
Notary Public, Hennepin County, Minnesota
My Commission expires 1/8/94

827696
OFFICE OF COUNTY RECORDER
STATE OF MINNESOTA, COUNTY OF ANOKA
I hereby certify that the within instrument was filed in this office for record on the Oct 21 A.D., 1988 at 3:25 o'clock P.M., and was duly recorded in book 46 of Plat, page 2
By Ted J. Randall
County Recorder
By Debra Karl Ege
Deputy

I HEREBY CERTIFY THAT THE TAXES PAYABLE IN THE YEAR 1988 ON THE LANDS DESCRIBED WITHIN ARE PAID
Tom Shackelford County Treasurer

ANDOVER, MINNESOTA

This plat of LUND'S EVERGREEN ESTATES 5TH ADDITION was approved and accepted by the City Council of Andover, Minnesota, at a regular meeting thereof held this 18th day of October, A.D., 1988. If applicable, the written comments and recommendations of the Commissioner of Transportation and the County Highway Engineer have been received by the City or the prescribed 30 day period has elapsed without receipt of such comments and recommendations, as provided by Minnesota Statutes, Section 505.03, Subd. 2.

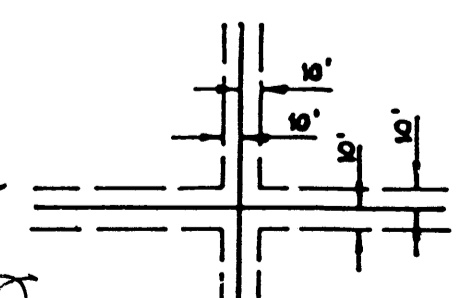
CITY COUNCIL OF ANDOVER, MINNESOTA
By Gregory W. Anderson Mayor
By Christina Doll City Clerk

SURVEY DIVISION, Anoka County, Minnesota
Checked and approved this 21st day of Oct, 1988.
Merlyn D. Anderson, Anoka County Surveyor
By W. D. Anderson

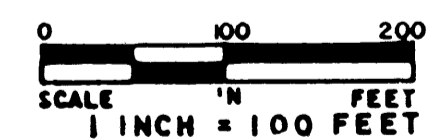
▲ — ▲ — DENOTES "RIGHT OF ACCESS" DEDICATED TO ANOKA COUNTY

ANDOVER, MINNESOTA
"NO DELINQUENT TAXES AND TRANSFER ENTLRED"
October 21, 1988
Charles R. Riefel
Auditor, Anoka County
By Debra Karl Ege Deputy

UTILITY & DRAINAGE EASEMENTS ARE SHOWN THUS:



BEING 10 FEET IN WIDTH AND ADJOINING LOT LINES UNLESS OTHERWISE INDICATED



○ DENOTES IRON MONUMENT SET WITH CAP STAMPED RLS 12254
ORIENTATION OF THIS BEARING SYSTEM IS BASED ON THE WEST LINE OF LUND'S EVERGREEN ESTATES 4TH ADDITION WHICH IS ASSUMED TO HAVE A BEARING OF N 00°41'06" W

MERILA & ASSOCIATES, INC.
ENGINEERS, SURVEYORS, SITE PLANNERS