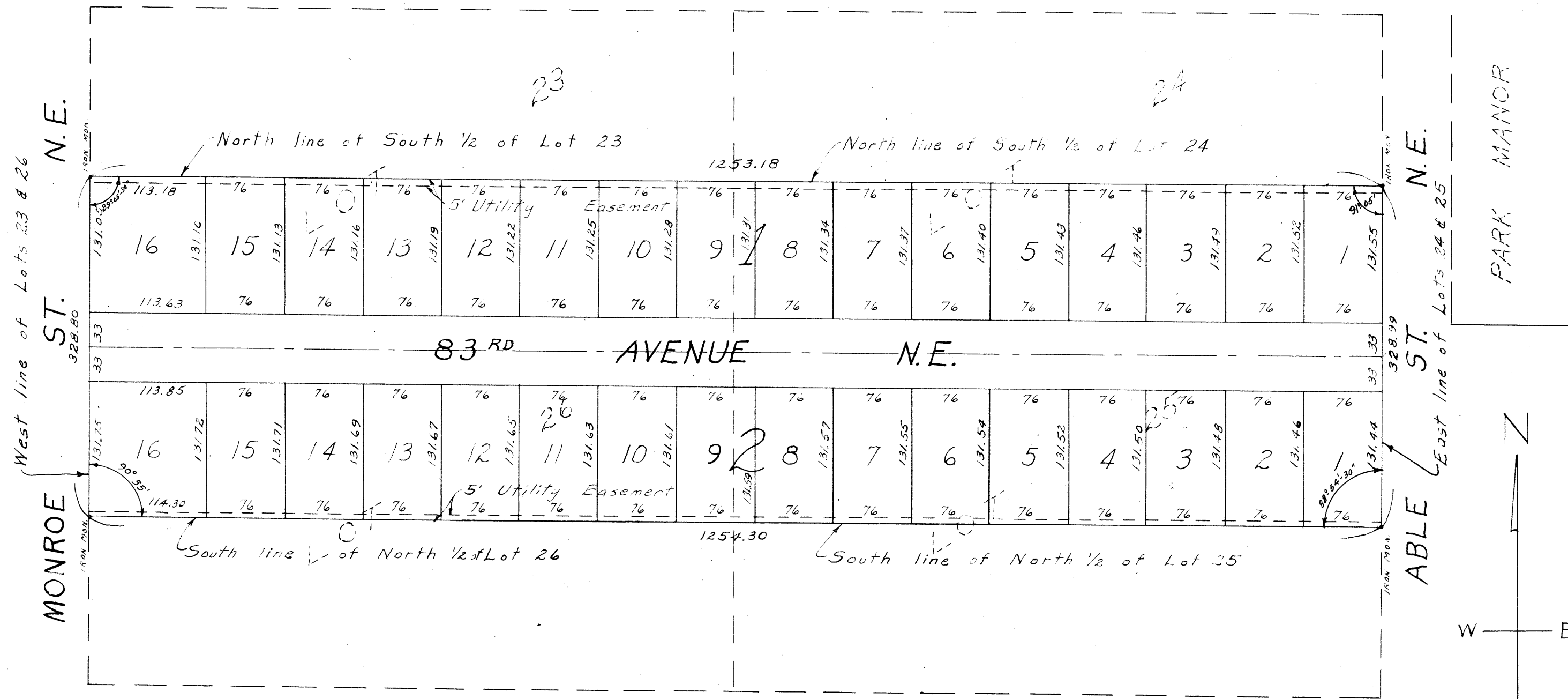


# LUND'S SECOND ADDITION

ANOKA COUNTY, MINNESOTA

SCALE: 1" = 100'  
OCTOBER 1953

CARTWRIGHT & OLSON  
LAND SURVEYORS



Know all men by these presents that we, Ralph N. Lund and Lucille A. Lund, his wife, owners and proprietors of the following described property situate in the State of Minnesota and County of Anoka to-wit: The South 1/2 of Lots 23 and 24 and the North 1/2 of Lots 25 and 26, all in a Subdivision of the Northeast Quarter of Section 2, Township 30, Range 24 according to the plat thereof on file and of record in the office of the Register of Deeds in and for Anoka County, Minnesota. Have caused the same to be surveyed and plotted as LUND'S SECOND ADDITION and do hereby donate and dedicate to the public for public use forever the Avenue and Streets as shown on the annexed plat and subject, however, to the easement for utility purposes as shown on the annexed plat. In witness whereof, said Ralph N. Lund and Lucille A. Lund, his wife, have hereunto set their hands and seals this 9th day of Nov. A.D. 1953

In the presence of: Signed:  
Eino Simonsen Ralph N. Lund.  
Roy Salders Lucille A. Lund

State of Minnesota } s.s.  
 County of Anoka }  
 On this 9th day of Nov. A.D. 1953, before me, a Notary Public, within and for said County and State, personally appeared Ralph N. Lund and Lucille A. Lund, his wife, to me personally known to be the persons described in and who executed the foregoing instrument and they affirm and acknowledge that they executed the same as their own free act and deed.

T. J. Juma  
 Notary Public, Anoka County, Minnesota  
 My Commission Expires 9-19-57

State of Minnesota } s.s.  
 County of Hennepin }  
 I do hereby certify that I have surveyed and plotted the property described on this plat as LUND'S SECOND ADDITION; that this plat is a correct representation of said survey; that all distances are correctly shown on the plat in feet and decimals of a foot; that the monuments for guidance of future surveys have been correctly placed in the ground as shown on the plat; that the outside boundary lines are correctly designated on the plat; that the topography of the land is correctly shown on said plat; and that there are no wet lands or public highways to be designated on said plat other than as shown thereon.

George Cartwright  
 Surveyor - Minn. Reg. No. 1983

This plat was approved and accepted by the Honorable Board of County Commissioners of the County of Anoka, State of Minnesota at a regular meeting thereof held this 5th day of Nov. A.D. 1954

A. H. Ittner Chairman, Board of County Commissioners, Anoka County, Minnesota  
Samuel W. Campbell County Auditor, Anoka County, Minnesota  
 by \_\_\_\_\_ Deputy

Above certificate subscribed and sworn to, before me a Notary Public within and for said County and State on this 5th day of November A.D. 1953.

Clara Mae Dickey  
 Notary Public, Hennepin County, Minnesota  
 My Commission Expires \_\_\_\_\_

This is to certify that the foregoing plat of LUND'S SECOND ADDITION was approved and accepted by the Planning and Zoning Commission and by the Town Board of the Township of Fridley, Anoka County, Minnesota at a regular meeting thereof held this 9th day of November A.D. 1953

Stan Dahlmeier Chairman, Town Board of Fridley  
Margaret Small Clerk, Town Board of Fridley

This plat was approved as to form and execution on this 24 day of Dec. A.D. 1953  
Robert W. Johnson County Attorney, Anoka County, Minnesota

15240

Office of REGISTRAR OF TITLES  
 STATE OF MINNESOTA  
 COUNTY OF ANOKA  
 I hereby certify that the within instrument was filed in this office on the 11th day of JAN. 11 1954 at 9 o'clock A.M.  
Gertrude Wanner Registrar of Titles  
 DEPUTY REGISTRAR OF TITLES

TAXES PAID  
 This 11 day of Jan. 1954  
Samuel W. Campbell  
 Auditor, Anoka County, Minn.  
George Cartwright, Deputy

herby certify that taxes for the year 1953 on the lands described within are paid  
Walter D. Bowers  
 County Treasurer  
W. Peterson Deputy