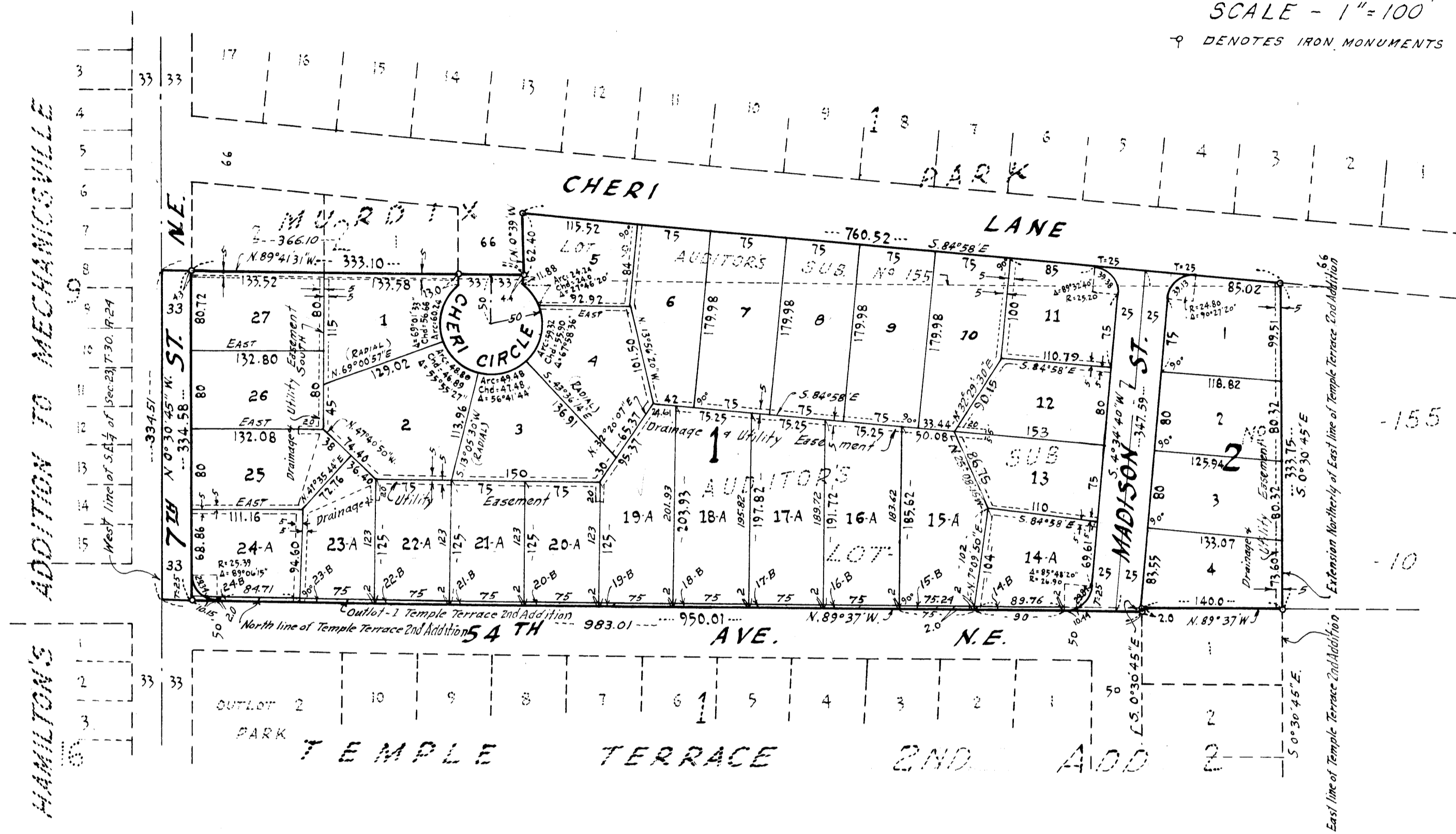


LYNDALE BUILDERS 4TH ADDITION

CITY OF FRIDLEY,
ANOKA COUNTY, MINNESOTA

CARTWRIGHT & OLSON
REGISTERED LAND SURVEYORS

SCALE - 1" = 100'
Q DENOTES IRON MONUMENTS



KNOW ALL MEN BY THESE PRESENTS: THAT WE, JOHN H. GLOVER HOUSES INC., A MINNESOTA CORPORATION, OWNERS AND PROPRIETORS OF THE FOLLOWING DESCRIBED PROPERTY SITUATE IN THE STATE OF MINNESOTA AND THE COUNTY OF ANOKA, TO-WIT: OUTLOT 1, TEMPLE TERRACE 2ND ADDITION ACCORDING TO THE PLAT THEREOF ON FILE AND OF RECORD IN THE OFFICE OF THE REGISTER OF DEEDS, ANOKA COUNTY, MINNESOTA AND MAX SALITERMAN AND DELLA SALITERMAN, HIS WIFE, OWNERS AND PROPRIETORS OF THE FOLLOWING DESCRIBED PROPERTY, TO-WIT: THAT PART OF LOTS 9 AND 10, AND UNNUMBERED PORTION OF AUDITOR'S SUBDIVISION NO. 155, ANOKA COUNTY, MINNESOTA, LYING SOUTH OF MURDIX PARK, ACCORDING TO THE PLAT THEREOF ON FILE AND OF RECORD IN THE OFFICE OF THE REGISTER OF DEEDS, ANOKA COUNTY, MINNESOTA, LYING NORTH OF TEMPLE TERRACE 2ND ADDITION ACCORDING TO THE PLAT THEREOF ON FILE AND OF RECORD IN THE OFFICE OF THE REGISTER OF DEEDS, ANOKA COUNTY, MINNESOTA, AND LYING WEST OF THE EXTENSION NORTHERLY OF THE EAST LINE OF SAID TEMPLE TERRACE 2ND ADDITION, SUBJECT TO THE RIGHTS OF THE PUBLIC OVER THE WEST 33 FEET THEREOF FOR RIGHT OF WAY PURPOSES. HAVE CAUSED THE SAME TO BE SURVEYED AND PLATTED AS LYNDALE BUILDERS 4TH ADDITION AND DO HEREBY DONATE AND DEDICATE TO THE PUBLIC FOR THE PUBLIC USE FOREVER THE STREETS, AVENUE, LANE, AND CIRCLE AS SHOWN ON THE ANNEXED PLAT. ALSO, SUBJECT TO UTILITY AND DRAINAGE EASEMENTS AS SHOWN ON ANNEXED PLAT. IN WITNESS WHEREOF, SAID JOHN H. GLOVER HOUSES INC., HAS CAUSED THESE PRESENTS TO BE SIGNED BY ITS PROPER OFFICER AND ITS CORPORATE SEAL TO BE HEREUNTO AFFIXED THIS 20th DAY OF July, A.D., 1959. AND MAX SALITERMAN AND DELLA SALITERMAN, HIS WIFE, HAVE HEREUNTO SET THEIR HANDS AND SEALS THIS 20th DAY OF July, A.D., 1959.

IN PRESENCE OF
Carlson AND *Henry Cartwright*
Ed. Jensen AND *Max Saliterman*
Walter D. Powers AND *Robert J. Campbell*

SIGNED
 JOHN H. GLOVER HOUSES INC.
John H. Glover
 PRESIDENT
Max Saliterman
 MAX SALITERMAN
Della Saliterman
 DELLA SALITERMAN

STATE OF MINNESOTA) ss
 COUNTY OF HENNEPIN) ss

ON THIS 20th DAY OF July, A.D. 1959, BEFORE ME, A NOTARY PUBLIC WITHIN AND FOR SAID COUNTY AND STATE PERSONALLY APPEARED JOHN H. GLOVER, TO ME PERSONALLY KNOWN, WHO BEING BY ME DULY SWORN, DID SAY THAT HE IS THE PRESIDENT OF JOHN H. GLOVER HOUSES INC. THE CORPORATION NAMED IN THE FOREGOING INSTRUMENT, THAT THE SEAL AFFIXED TO SAID INSTRUMENT IS THE CORPORATE SEAL OF SAID CORPORATION AND THAT SAID INSTRUMENT WAS SIGNED AND SEALED IN BEHALF OF SAID CORPORATION BY AUTHORITY OF ITS BOARD OF DIRECTORS AND SAID JOHN H. GLOVER ACKNOWLEDGES SAID INSTRUMENT TO BE THE FREE ACT AND DEED OF SAID CORPORATION.

Clara Mae Dickey
 NOTARY PUBLIC, HENNEPIN COUNTY, MINN.
 MY COMMISSION EXPIRES 1961

STATE OF MINNESOTA) ss
 COUNTY OF HENNEPIN) ss

ON THIS 20th DAY OF July, A.D. 1959, BEFORE ME, A NOTARY PUBLIC, WITHIN AND FOR SAID COUNTY AND STATE PERSONALLY APPEARED MAX SALITERMAN AND DELLA SALITERMAN, HIS WIFE, TO ME KNOWN TO BE THE PERSONS DESCRIBED IN AND WHO EXECUTED THE FOREGOING INSTRUMENT AND THEY AFFIRM AND ACKNOWLEDGE THAT THEY EXECUTED THE SAME AS THEIR OWN FREE ACT AND DEED.

Clara Mae Dickey
 NOTARY PUBLIC, HENNEPIN COUNTY, MINN.
 MY COMMISSION EXPIRES 1961

STATE OF MINNESOTA) ss
 COUNTY OF HENNEPIN) ss

I DO HEREBY CERTIFY THAT I HAVE SURVEYED AND PLATTED THE PROPERTY DESCRIBED ON THIS PLAT AS LYNDALE BUILDERS 4TH ADDITION; THAT THIS PLAT IS A CORRECT REPRESENTATION OF SAID SURVEY; THAT ALL DISTANCES ARE CORRECTLY SHOWN ON THE PLAT IN FEET AND DECIMALS OF A FOOT; THE MONUMENTS FOR THE GUIDANCE OF FUTURE SURVEYS HAVE BEEN CORRECTLY PLACED IN THE GROUND AS SHOWN ON THE PLAT; THAT THE OUTSIDE BOUNDARY LINES ARE CORRECTLY DESIGNATED ON THE PLAT; THAT THE TOPOGRAPHY OF THE LAND IS CORRECTLY SHOWN ON THE PLAT; AND THAT THERE ARE NO WET LANDS OR PUBLIC HIGHWAYS TO BE DESIGNATED ON SAID PLAT OTHER THAN SHOWN THEREON.

Henry Cartwright
 REGISTERED LAND SURVEYOR, MINN. REG. NO. 1983

STATE OF MINNESOTA) ss
 COUNTY OF HENNEPIN) ss

ABOVE CERTIFICATE SUBSCRIBED AND SWORN TO BEFORE ME A NOTARY PUBLIC WITHIN AND FOR SAID COUNTY AND STATE THIS 20th DAY OF July, A.D., 1959.

Clara Mae Dickey
 NOTARY PUBLIC, HENNEPIN COUNTY, MINNESOTA
 MY COMMISSION EXPIRES 1961

WE HEREBY CERTIFY THAT THE CITY COUNCIL OF THE CITY OF FRIDLEY, ANOKA COUNTY, MINNESOTA, DULY ACCEPTED AND APPROVED THE ANNEXED PLAT OF LYNDALE BUILDERS 4TH ADDITION AT A REGULAR MEETING THEREOF HELD THIS 18th DAY OF August, A.D., 1959.

CITY OF FRIDLEY, ANOKA COUNTY, MINNESOTA
Walter D. Powers
 MAYOR
Robert J. Campbell
 CITY MANAGER

OFFICE OF REGISTER OF DEEDS
 STATE OF MINNESOTA, COUNTY OF ANOKA } ss

I hereby certify that the within instrument was filed in this office for record on the 20th day of July, A.D., 1959, at 2:10 o'clock P.M., and was duly recorded in book 57 of Plate page 14.

Bertus Schinner
 Register of Deeds
 by *Margaret Kocak* Deputy

Office of REGISTRAR OF TITLES
 STATE OF MINNESOTA
 COUNTY OF ANOKA

I hereby certify that the within instrument was filed in this office on the 20th day of July, A.D., 1959, at 2:10 o'clock P.M.

Bertus Schinner Registrar of Titles
Ellen Boettcher Deputy Registrar of Titles

CHECKED AND APPROVED THIS 5th DAY OF August, A.D. 1959.
 BY *Robert W. Anderson*
 COUNTY SURVEYOR

VERIFIED CERTIFY THAT TAXES FOR THE YEAR 1958 ON THE LANDS DESCRIBED WITHIN ARE PAID

Walter D. Powers
 County Treasurer
Robert J. Campbell
 Deputy

HAMILTON'S ADDITION TO MECHANICSVILLE