

LYNDALE BUILDERS

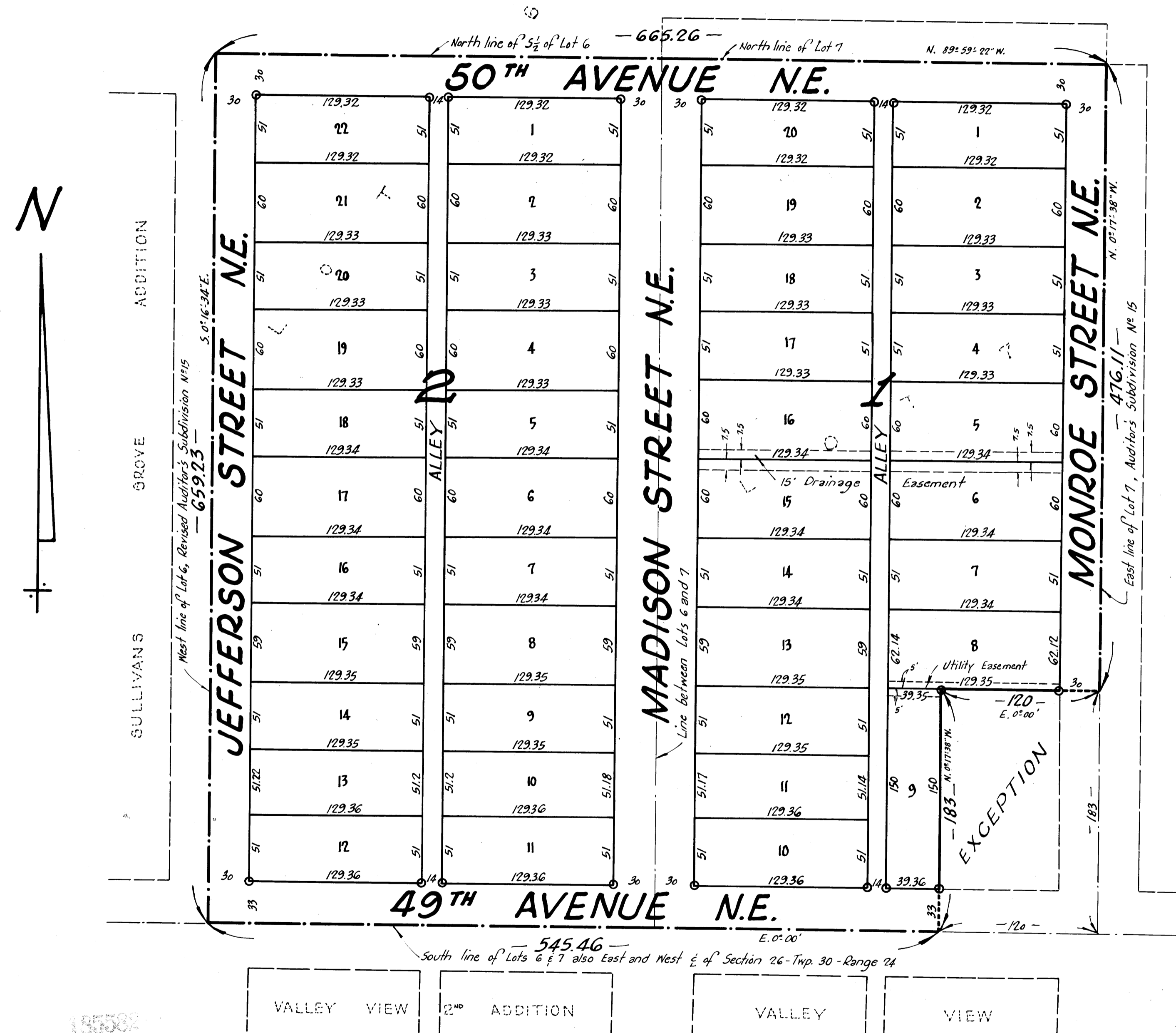
ADDITION

CITY OF COLUMBIA HEIGHTS
COUNTY OF ANOKA

Scale 1"=60'
June, 1957

MINDER ENGINEERING CO., INC.
ENGINEERS AND SURVEYORS

○ Denotes Iron Monument



KNOW ALL MEN BY THESE PRESENTS: that Meritt Corporation, a Minnesota Corporation, owners and proprietors of the following described property situate in the State of Minnesota and County of Anoka to-wit: The South $\frac{1}{2}$ of Lot 6 and Lot 7, Revised Auditor's Subdivision No. 15, Anoka County, Minnesota except the South 183 feet of the East 120 feet of said Lot 7, have caused the same to be surveyed and platted as LYNDALE BUILDERS ADDITION, and do hereby donate and dedicate to the public for public use forever the Streets and Avenues as shown on the annexed plat. Subject to the Drainage Easements as shown on the annexed plat. In witness whereof said Meritt Corporation, has caused these presents to be signed by its proper officers and its corporate seal to be hereunto affixed this 5th day of July A.D. 1957.

In Presence of:
Malcolm O. Watson }
Donald O. Anderson } As to Marvin Wolfenson and Harvey B. Ratner
Mary Wolfenson } MERITT CORPORATION President
Harvey B. Ratner } Secretary

State of Minnesota } s.s. On this 5th day of July A.D. 1957, before me a Notary Public within and for said County and State personally appeared Marvin Wolfenson and Harvey B. Ratner, to me personally known, who being each by me duly sworn, did say that they are the President and Secretary, respectively of Meritt Corporation, the corporation named in the foregoing instrument, that the seal affixed to said instrument is the Corporate seal of said Corporation, and that said instrument was signed and sealed in behalf of said corporation by authority of its Board of Directors and said Marvin Wolfenson and Harvey B. Ratner acknowledged said instrument to be the free act and deed of said corporation.

R. O. Burmaster
Notary Public, Hennepin County, Minnesota
My Commission Expires June 3, 1961

I do hereby certify that I have surveyed and platted the property described on this plat as LYNDALE BUILDERS' ADDITION, that this plat is a correct representation of said survey, that all distances are correctly shown on the plat in feet and decimals of a foot; that the monuments, for the guidance of future surveys have been correctly placed in the ground as shown on the plat; that the outside boundary lines are correctly designated on the plat; that the topography of the land is correctly shown on the plat; and that there are no wet lands or public highways to be designated on said plat other than shown thereon.

E. A. Rathbun
Minnesota Registered Land Surveyor - Reg. No. 3795

State of Minnesota } s.s. Above certificate subscribed and sworn to before me, a Notary Public within and for said County and State, this 2nd day of July A.D. 1957.

Leo Skoshnik
Notary Public, Hennepin County, Minnesota
My Commission Expires Nov. 8, 1961

This plat was approved and accepted by the City Council of Columbia Heights, Minnesota at a Regular meeting thereof held this 5th day of July A.D. 1957. In witness whereof, we have hereunto set our hands and seals.

CITY COUNCIL OF COLUMBIA HEIGHTS, MINNESOTA
 by *John F. Stupke* its Mayor
 by *Rosevelt C. Lawrence* its City Clerk

This plat was approved as to form and execution on this 5th day of July A.D. 1957.
Joseph E. Wargo
City Attorney, Columbia Heights, Minnesota

OFFICE OF REGISTER OF DEEDS
STATE OF MINNESOTA, COUNTY OF ANOKA
 12th Plats 17
Margaret R. ...

57th No. 57
Kenneth W. Campbell
Julius E. Loge, Deputy

I HEREBY CERTIFY THAT TAXES FOR THE YEAR 1956
 ON THE LANDS DESCRIBED WITHIN ARE PAID
Walter D. ...