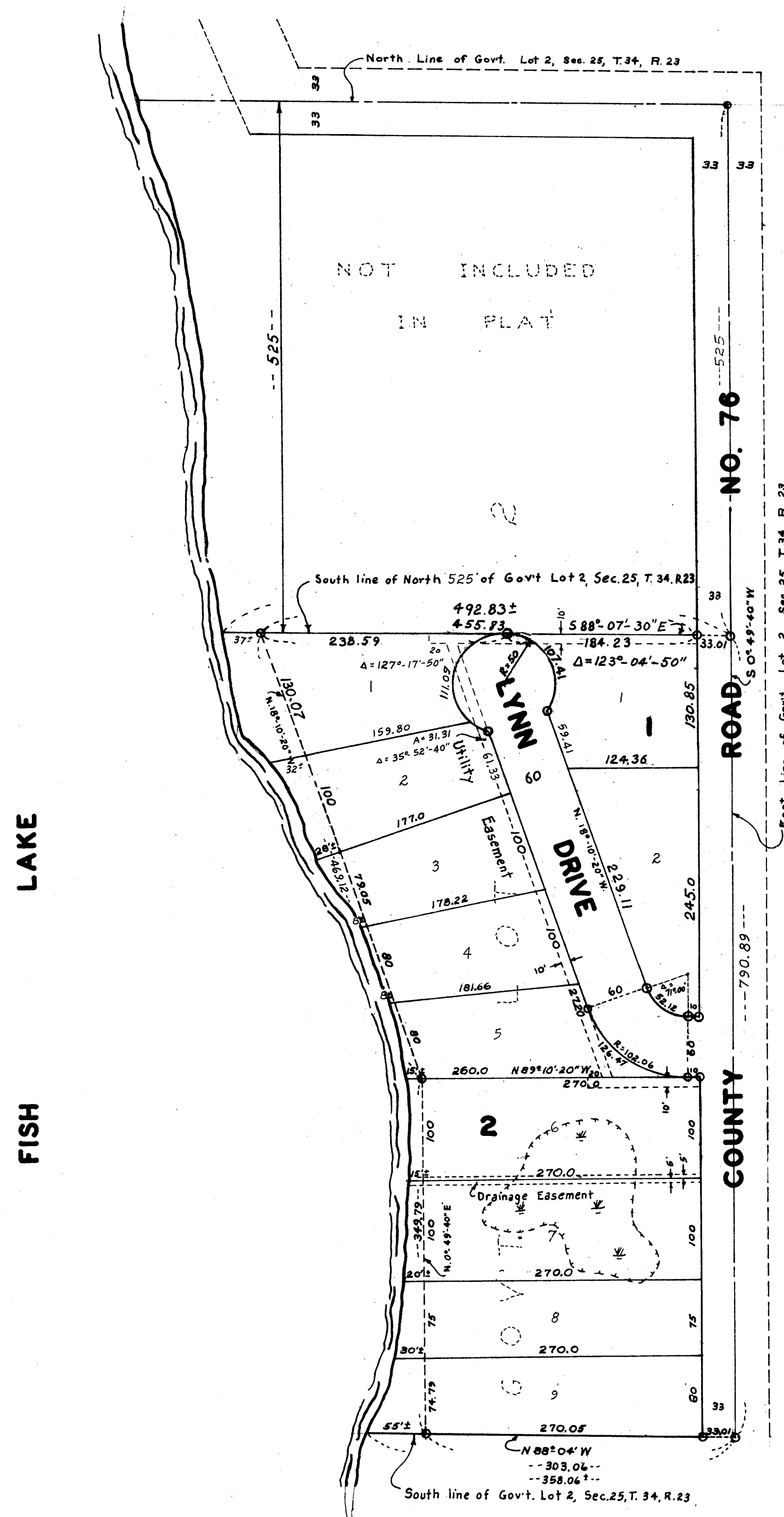


LYNN TERRACE

VILLAGE OF EAST BETHEL
ANOKA COUNTY, MINNESOTA

N.C. HOIUM & ASSOCIATES, INC
LAND SURVEYORS



SCALE: 1"=100'
- denotes IRON MON.

KNOW ALL MEN BY THESE PRESENTS: That we, Fish Lake Development Company, a partnership consisting of Harold Peterson, Alvar Peterson, and Edmund Heckenlaible, owners and proprietors of the following described property situate in the County of Anoka and State of Minnesota to-wit: All of Government Lot 2, Section 25, Township 34, Range 23 except the North 525 feet thereof. Have caused the same to be surveyed and platted as LYNN TERRACE and do hereby donate and dedicate to the public for the public use forever the Road and Drive as shown on the annexed plat. Also subject to utility & drainage easements as shown on the annexed plat. In witness whereof we have hereunto set our hands and seals this 31st day of December A.D. 1959.

In the presence of:
 Eva V. Nordin and Jarvis H. Nordin
 Eva V. Nordin and Jarvis H. Nordin
 Eva V. Nordin and Jarvis H. Nordin

Signed:
Harold Peterson
 Harold Peterson, partner
Alvar Peterson
 Alvar Peterson, partner
Edmund Heckenlaible
 Edmund Heckenlaible, partner

COUNTY OF ANOKA)
 STATE OF MINNESOTA) ss
 On this 31st day of December A.D. 1959, before me a Notary Public within and for said County and State personally appeared Harold Peterson, Alvar Peterson and Edmund Heckenlaible, to me personally known to be the persons described in and who executed the foregoing instrument and they affirm and acknowledge that they executed the same as their own free act and deed.
 partners of Fish Lake Development Company

Eva V. Nordin
 Notary Public, Anoka County, Minnesota
 My commission expires 4.19.61

I hereby certify that I have surveyed and platted the land described in the dedication on this plat as LYNN TERRACE; that this plat is a correct representation of said survey; that all distances are correctly shown on said plat in figures denoting feet and decimals of a foot; that the monuments for the guidance of future surveys have been correctly placed in the ground as shown on said plat; that the outside boundaries of the land are correctly designated on said plat; and that there are no wet lands or public highways to be designated on said plat other than are shown thereon.

Norman C. Hoium
 Land Surveyor--Minnesota Reg. No. 4427

COUNTY OF HENNEPIN)
 STATE OF MINNESOTA) ss
 Above certificate subscribed and sworn to before me, a Notary Public within and for said County and State, on this 4th day of November A.D. 1959.

RAYMOND C. SCHULTZ
 Notary Public, Hennepin County, Minn.
 My Commission Expires Aug. 13, 1966.

Raymond C. Schultz
 Notary Public, Hennepin County, Minnesota
 My commission expires Aug. 13, 1966

We hereby certify that the Village Council of the Village of East Bethel, Anoka County, Minnesota duly accepted and approved the annexed plat of LYNN TERRACE at a regular meeting thereof held this 2nd day of December A.D. 1959.

Walter D. Brown
 Mayor
Walter D. Brown
 Clerk

Checked and approved this 9th day of February A.D. 1960.

Roland W. Anderson
 County Surveyor, Anoka County, Minnesota

HEREBY CERTIFY THAT TAXES FOR THE YEAR 1959
 ON THE LANDS DESCRIBED WITHIN ARE PAID
Walter D. Brown
 County Treasurer

TAXES PAID
 This 27 day of Feb. 1960
Kenneth W. Campbell
 Auditor, Anoka County, Minn.
 By John E. Lege Deputy

EXEMPT FROM DEED TAX
Walter D. Brown
 Anoka County Treasurer
Walter D. Brown
 Deputy Treasurer

208908
 OFFICE OF REGISTER OF DEEDS
 STATE OF MINNESOTA, COUNTY OF ANOKA)
 I hereby certify that the within instru-)
 ment was duly recorded on)
 this 31st day of December A.D. 1959)
 at 3:30 P.M. and was duly recorded)
 in book 10 of Plate 6)
Hertrude Ahlstrom
 Register of Deeds
 By Margaret Russell Deputy