

# LYNWOOD SECOND ADDITION

CITY OF RAMSEY  
COUNTY OF ANOKA  
SEC.20, TWP.32, RGE.25

**KNOW ALL PERSONS BY THESE PRESENTS:** That U.S. Home, LLC, a Delaware limited liability company, owner of the following described property:

OUTLOT B AND C, LYNWOOD, ANOKA COUNTY, MINNESOTA

Has caused the same to be surveyed and platted as LYNWOOD SECOND ADDITION and does hereby dedicate to the public for public use the public ways and the drainage and utility easements as created by this plat.

In witness whereof said U.S. Home, LLC, a Delaware limited liability company, has caused these presents to be signed by its proper officer this 18<sup>th</sup> day of MAY, 2023.

Signed: U.S. Home, LLC

[Signature]  
Jon Aune, Division Vice President

STATE OF MINNESOTA  
COUNTY OF Hennepin

This instrument was acknowledged before me this 18<sup>th</sup> day of MAY, 2023 by Jon Aune, Division Vice President of U.S. Home, LLC, a Delaware limited liability company, on behalf of the company.

[Signature] (Signature)  
Notary Public, \_\_\_\_\_ County, Minnesota

Carole Toohay  
Notary Printed Name

My Commission Expires: Jan 31 2027

### SURVEYORS CERTIFICATE

I Daniel L. Schmidt do hereby certify that this plat was prepared by me or under my direct supervision; that I am a duly Licensed Land Surveyor in the State of Minnesota; that this plat is a correct representation of the boundary survey; that all mathematical data and labels are correctly designated on this plat; that all monuments depicted on this plat have been, or will be correctly set within one year; that all water boundaries and wet lands, as defined in Minnesota Statutes, Section 505.01, Subd. 3, as of the date of this certificate are shown and labeled on this plat; and all public ways are shown and labeled on this plat.

Dated this 7<sup>th</sup> day of March, 2023.

[Signature]  
Daniel L. Schmidt, Licensed Land Surveyor  
Minnesota License No. 26147

STATE OF MINNESOTA  
COUNTY OF HENNEPIN

This instrument was acknowledged before me this 7<sup>th</sup> day of March, 2023 by Daniel L. Schmidt.

[Signature] (Signature)  
Notary Public, Hennepin County, Minnesota

Jaime L. Carlson  
Notary Printed Name

My Commission Expires: Jan. 31, 2027

### CITY COUNCIL, CITY OF RAMSEY, MINNESOTA

This plat of LYNWOOD SECOND ADDITION was approved and accepted by the City Council of the City of Ramsey, Minnesota at a regular meeting thereof held this 10<sup>th</sup> day of JANUARY, 2023, and said plat is in compliance with the provisions of Minnesota Statutes, Section 505.03, Subd. 2.

### CITY COUNCIL, CITY OF RAMSEY, MINNESOTA

By: [Signature], Mayor By: [Signature], Clerk

### COUNTY SURVEYOR

I hereby certify that in accordance with Minnesota Statutes, Section 505.021, Subd. 11, this plat has been reviewed and approved this 24<sup>th</sup> day of MAY, 2023.

By: [Signature]  
David M. Zieglmeier  
Anoka County Surveyor

### COUNTY AUDITOR/TREASURER

Pursuant to Minnesota Statutes, Section 505.021, Subd. 9, taxes payable in the year 2023 on the land hereinbefore described have been paid. Also, pursuant to Minnesota Statutes, Section 272.12, there are no delinquent taxes and transfer entered this 24 day of MAY, 2023.

PAMELA J LEBLANC  
Property Tax Administrator

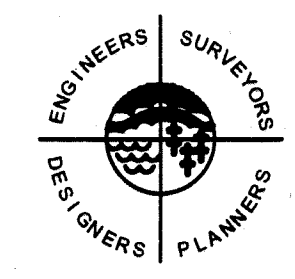
By: [Signature], Deputy

### COUNTY RECORDER/REGISTRAR OF TITLES COUNTY OF ANOKA, STATE OF MINNESOTA

I hereby certify that this plat of LYNWOOD SECOND ADDITION was filed in the office of the County Recorder/Registrar of Titles for public record on this 24 day of MAY, 2023, at 12:06 o'clock P.M. and was duly recorded as Document Number 2391289.004

PAMELA J LEBLANC  
County Recorder/Registrar of Titles

By: [Signature], Deputy



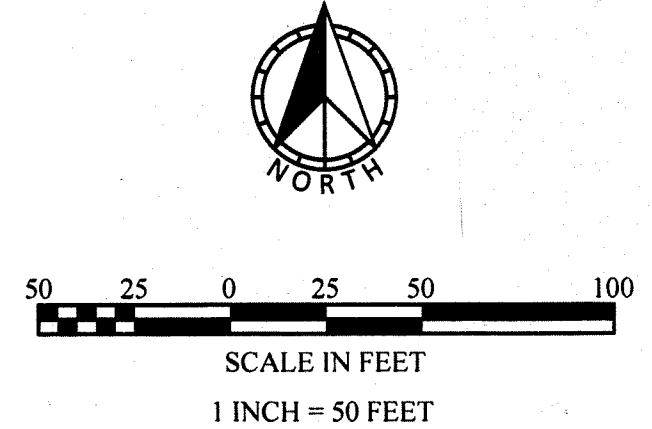
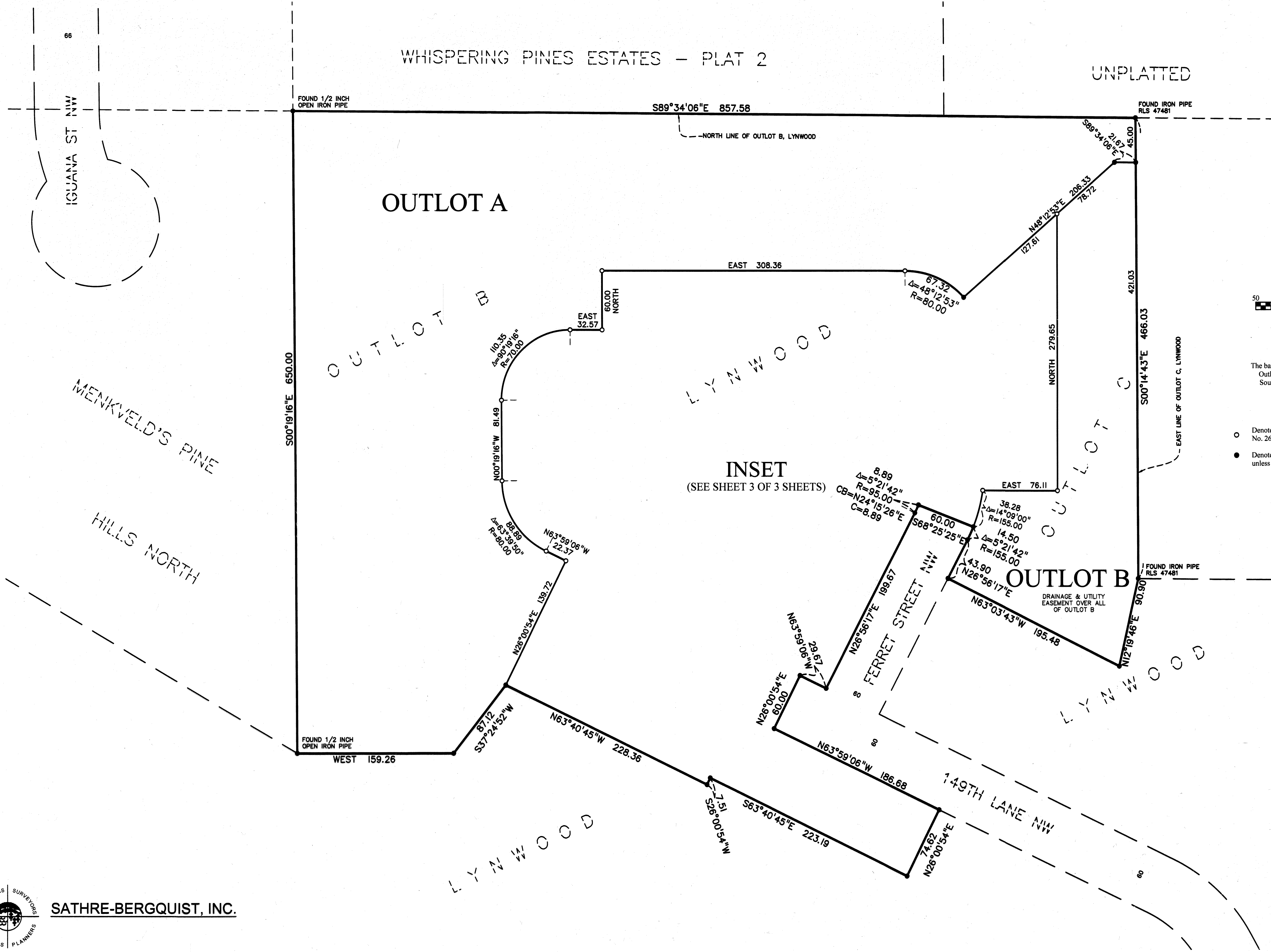
**SATHRE-BERGQUIST, INC.**

# LYNWOOD SECOND ADDITION

CITY OF RAMSEY  
COUNTY OF ANOKA  
SEC.20, TWP.32, RGE.25

WHISPERING PINES ESTATES - PLAT 2

UNPLATTED



The basis for the bearing system is the north line of Outlot B, LYNWOOD and is assumed to bear South 89 degrees 34 minutes 06 seconds East

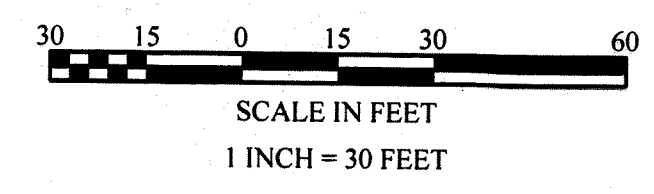
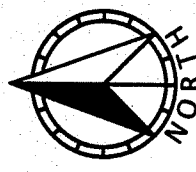
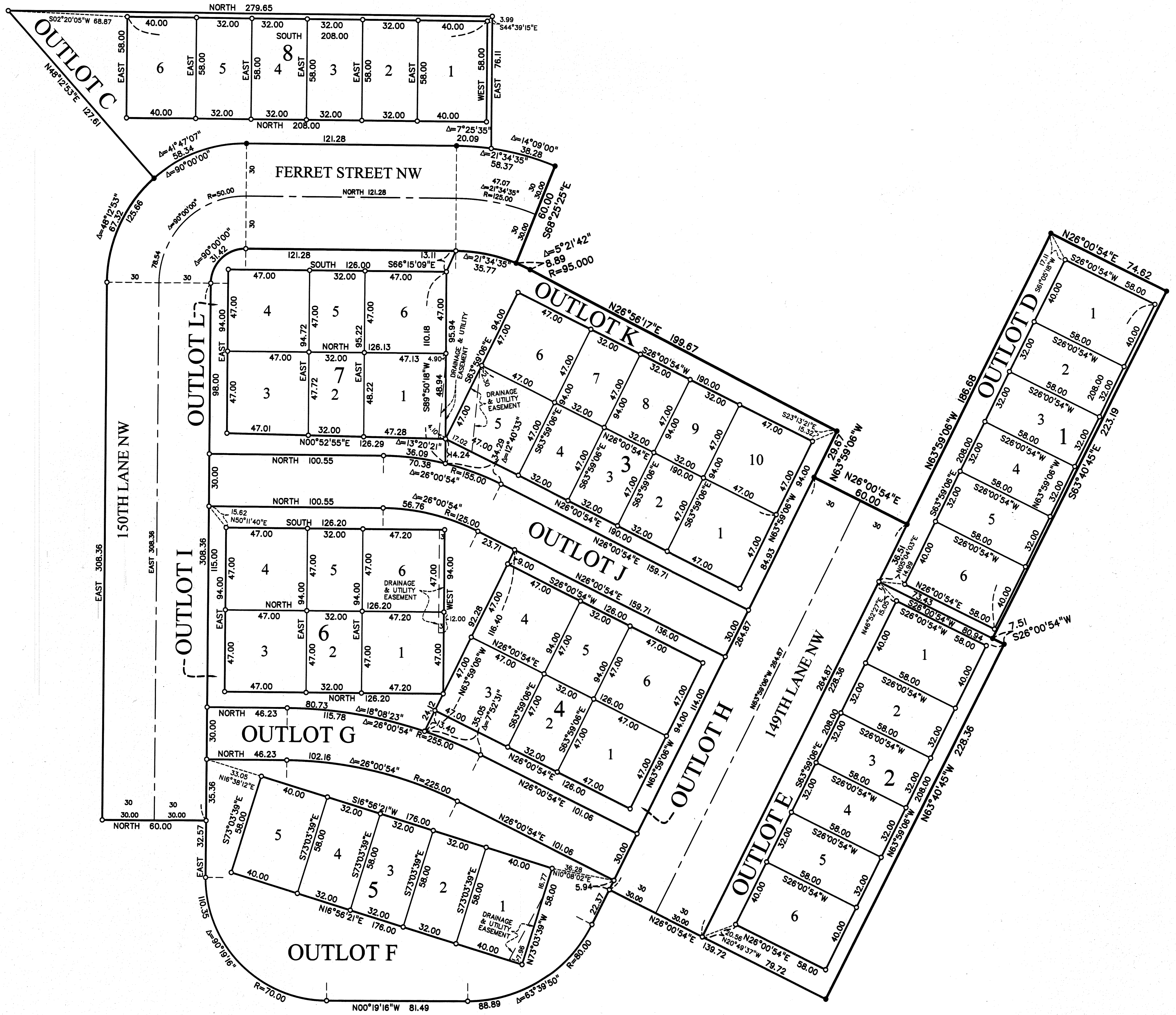
- Denotes a 1/2 inch by 14 inch iron pipe set and marked by License No. 26147.
- Denotes a 1/2 inch pipe found and marked by License No. 26147, unless shown otherwise.

INSET  
(SEE SHEET 3 OF 3 SHEETS)

INSET

# LYNWOOD SECOND ADDITION

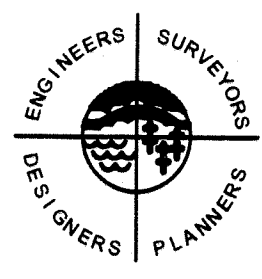
CITY OF RAMSEY  
COUNTY OF ANOKA  
SEC.20, TWP.32, RGE.25



The basis for the bearing system is the north line of Outlot B, LYNWOOD and is assumed to bear South 89 degrees 34 minutes 06 seconds East (See Sheet 2 of 3 Sheets)

- Denotes a 1/2 inch by 14 inch iron pipe set and marked by License No. 26147.
- Denotes a 1/2 inch pipe found and marked by License No. 26147, unless shown otherwise.

DRAINAGE AND UTILITY OVER ALL OF OUTLOT C THROUGH OUTLOT L INCLUSIVE.



SATHRE-BERGQUIST, INC.