

MADelyn COVE

CITY OF BLAINE
COUNTY OF ANOKA
SEC. 32, TWP. 31, RNG. 23
Book 77 of Abst page 36

KNOW ALL PERSONS BY THESE PRESENTS: That Kayak Remodeling and Redevelopment, LLC, a Minnesota limited liability company, owner of the following described property:

Lot 21, SPRING LAKE PARK SHORES, ADDITION, EXCEPT the East 150 feet thereof, Anoka County, Minnesota.
and
Lot 40, SPRING LAKE PARK SHORES, ADDITION, Anoka County, Minnesota.

Has caused the same to be surveyed and platted as MADelyn COVE and does hereby dedicate to the public for public use the drainage and utility easements as shown by this plat.

In witness whereof said Kayak Remodeling and Redevelopment, LLC, a Minnesota limited liability company, has caused these presents to be signed by its proper officer this 29th day of October, 2014.

KAYAK REMODELING AND REDEVELOPMENT, LLC

Terry L. Buchanan
Terry L. Buchanan, Chief Manager

STATE OF MINNESOTA
COUNTY OF Anoka

This instrument was acknowledged before me this 29th day of October, 2014, by Terry L. Buchanan, Chief Manager of Kayak Remodeling and Redevelopment, LLC, a Minnesota limited liability company.

Claudia C. Kieffer
Claudia C. Kieffer
Notary Public, Anoka County, Minnesota
My Commission Expires January 31, 2015

I Eric R. Vickaryous do hereby certify that this plat was prepared by me or under my direct supervision; that I am a duly Licensed Land Surveyor in the State of Minnesota; that this plat is a correct representation of the boundary survey; that all mathematical data and labels are correctly designated on this plat; that all monuments depicted on this plat have been, or will be correctly set within one year; that all water boundaries and wet lands, as defined in Minnesota Statutes, Section 505.01, Subd. 3, as of the date of this certificate are shown and labeled on this plat; and all public ways are shown and labeled on this plat.

Dated this 22nd day of August, 2014.

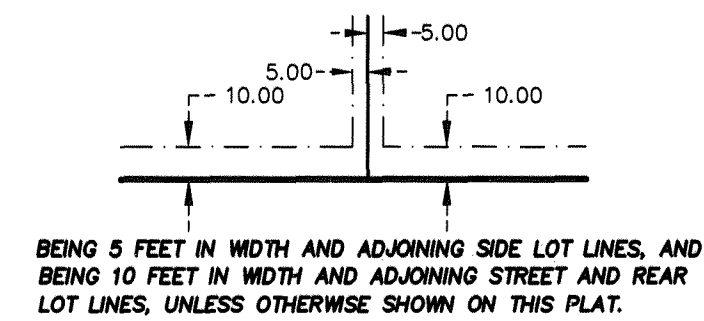
Eric R. Vickaryous
Eric R. Vickaryous, Licensed Land Surveyor
Minnesota License Number 44125

STATE OF MINNESOTA
COUNTY OF Anoka

This instrument was acknowledged before me this 22nd day of August, 2014, by Eric R. Vickaryous.

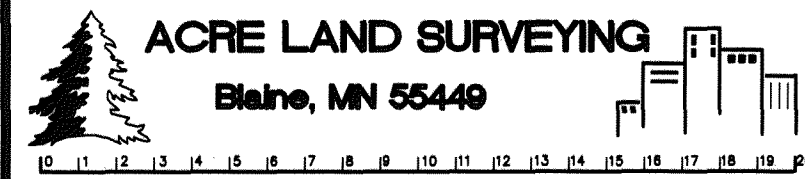
Lia M. Kuehn
Lia M. Kuehn
Notary Public, Anoka County, Minnesota
My Commission Expires January 31, 2015

DRAINAGE AND UTILITY EASEMENTS ARE SHOWN THUS:



FOR THE PURPOSES OF THIS PLAT, THE NORTH LINE OF LOT 40, SPRING LAKE PARK SHORES, ADDITION, ANOKA COUNTY, MINNESOTA, IS ASSUMED TO BEAR S89°51'51"E.

- DENOTES FOUND MONUMENT.
- DENOTES 1/2 INCH IRON PIPE MARKED BY LICENSE NO. 44125.
- ALL MONUMENT REQUIRED BY MINNESOTA STATUTE WILL BE SET WITHIN ONE YEAR OF THE RECORDING DATE OF THIS PLAT, AND SHALL BE EVIDENCED BY A 1/2" INCH BY 1/4" INCH IRON PIPE MARKED BY RLS 44125.



CITY COUNCIL, CITY OF BLAINE, MINNESOTA

This plat of MADelyn COVE was approved and accepted by the City Council of the City of Blaine, Minnesota at a regular meeting thereof held this 10th day of July, 2014, and said plat is in compliance with the provisions of Minnesota Statutes, Section 505.03 Subd. 2.

CITY COUNCIL, CITY OF BLAINE, MINNESOTA

By: [Signature] Mayor

By: [Signature] Clerk

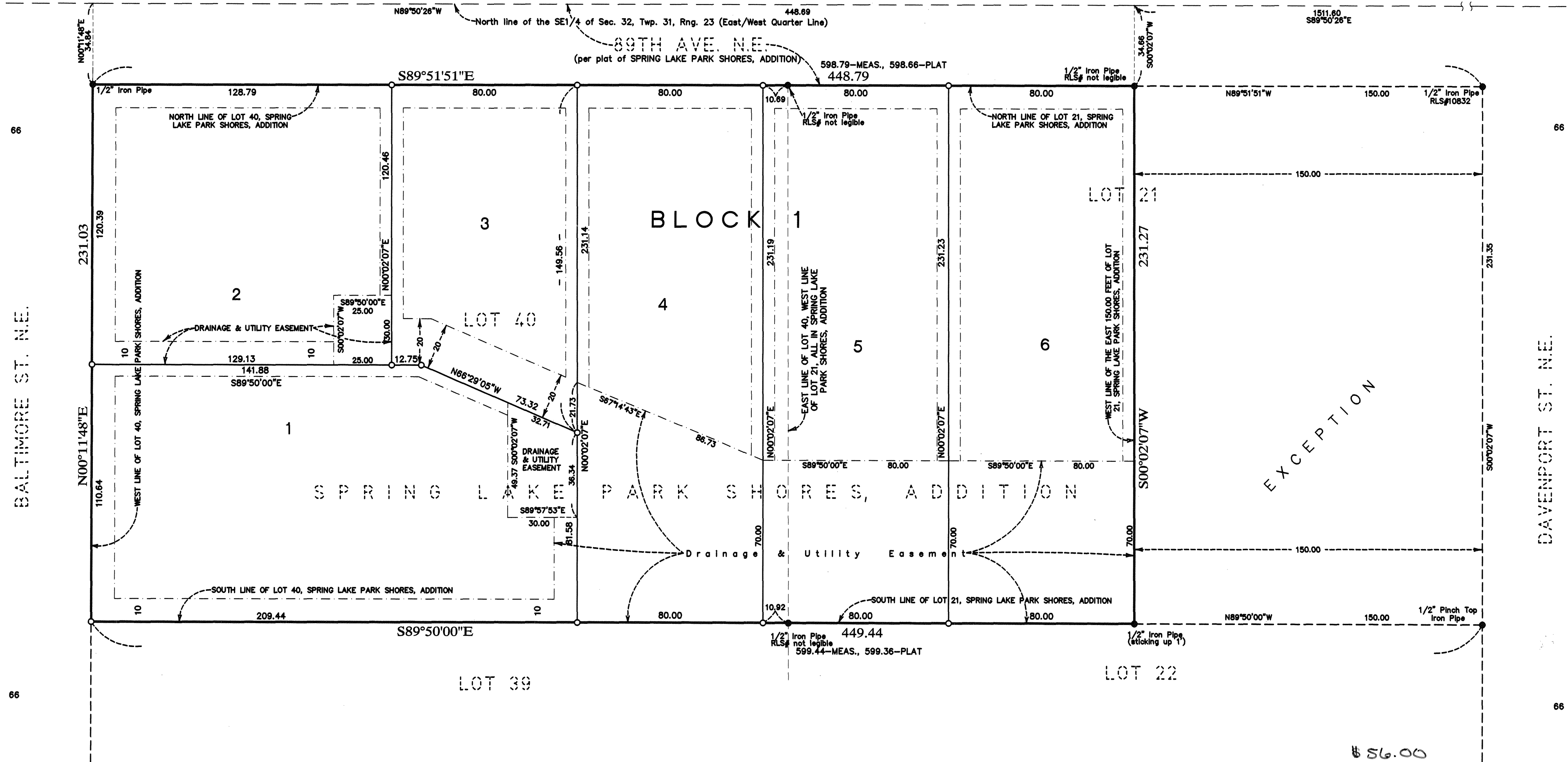
COUNTY SURVEYOR

I hereby certify that in accordance with Minnesota Statutes, Section 505.021, Subd. 11, this plat has been reviewed and approved this 29th day of October, 2014.

By: Larry D. Holium by Charles F. Setzer, Deputy
Larry D. Holium
Anoka County Surveyor

I HEREBY CERTIFY THAT THE CURRENT AND DELINQUENT TAXES ON THE LANDS DESCRIBED HEREIN ARE PAID AND THE TRANSFER IS EFFECTIVE 10-31-14
Jonell M. Sawyer
PROPERTY TAX ADMINISTRATOR
BY: SM
DEPUTY PROPERTY TAX ADMINISTRATOR

East 1/4 corner of Sec. 32, Twp. 31, Rng. 23



\$56.00

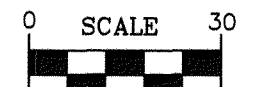
2093412.002

Office of RECORDER/REGISTRAR

OF TITLES
STATE OF MINNESOTA COUNTY OF ANOKA

I hereby certify that the within instrument was filed in this office for record on the 29th day of Oct, 2014 at 14:20 o'clock P.M. and was duly recorded in book 77 of Abst page 36

Jonell M. Sawyer
Recorder/Registrar of Titles



(SCALE IN FEET)
1 inch = 30 feet

NORTH