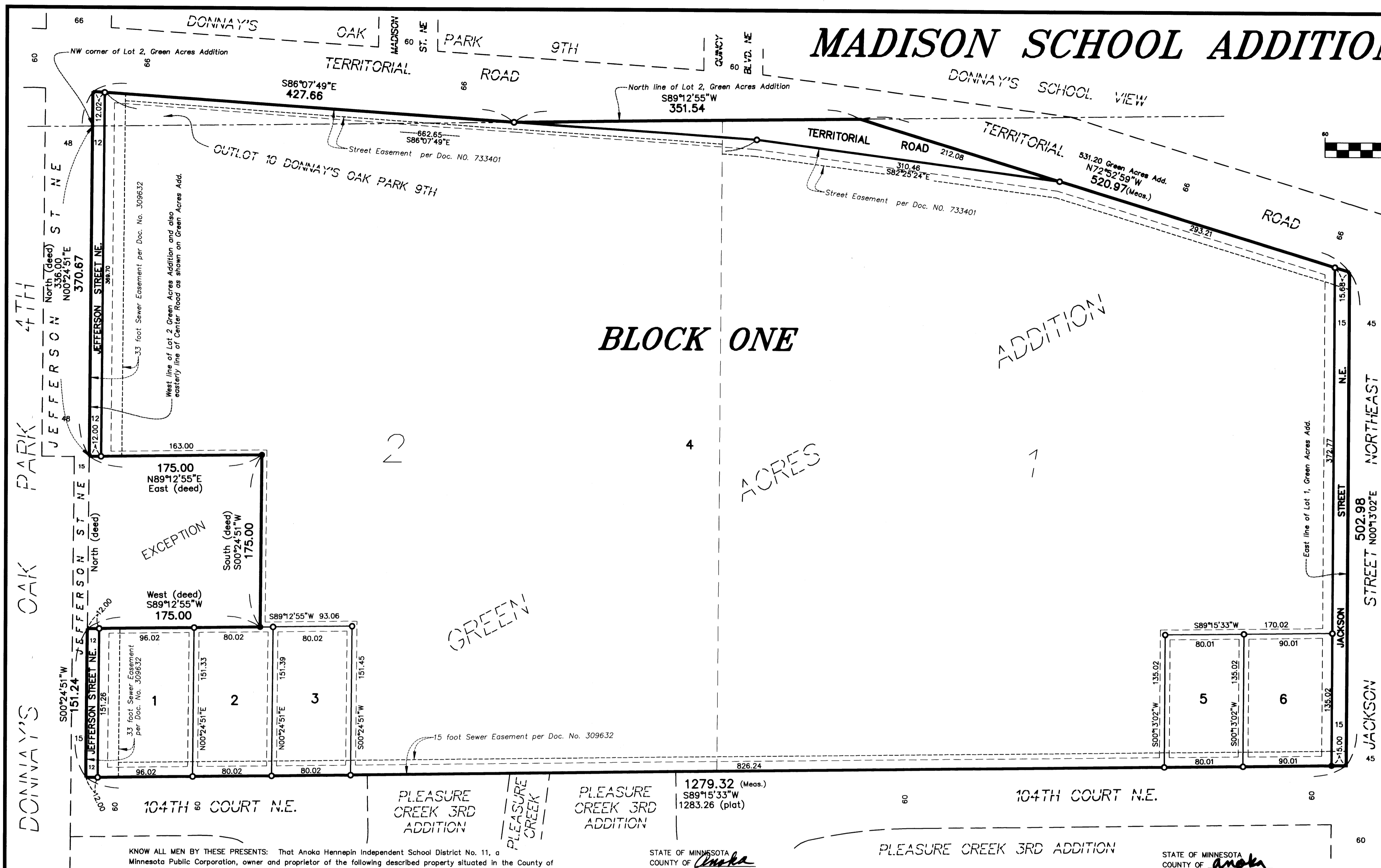
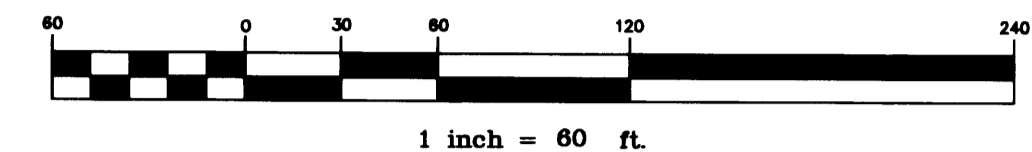


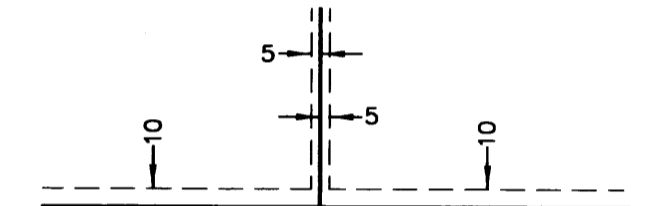
# MADISON SCHOOL ADDITION

CITY OF BLAINE  
COUNTY OF ANOKA  
Sec. 19, T. 31, R. 23  
Book 60 Page 32

SCALE IN FEET



DRAINAGE AND UTILITY  
EASEMENTS ARE SHOWN  
THIS: not to scale



being 5 feet in width, and adjoining lot lines unless otherwise indicated, and 10 feet in width and adjoining right of way lines unless otherwise indicated on the plat.

All monuments required by Minnesota statute, and not shown on this plat, will be set within one year of the recording date of this plat, and shall be evidenced by a 1/2 inch x 14 inch iron pipe marked by R.L.S. No. 20595

- Denotes found iron monument.
- Denotes 1/2 inch by 14 inch iron monument set and marked by license No. 20595

For the purposes of this plat the west line of LOT 2, GREEN ACRES ADDITION has an assumed bearing of N00°24'51"E.

I HEREBY CERTIFY THAT THE CURRENT AND DELINQUENT TAXES ON THE LANDS DESCRIBED WITHIN ARE PAID AND THE TRANSFER IS ENTERED

APR 4 2001  
MAUREEN J. DEVINE  
PROPERTY TAX ADMINISTRATOR

BY: S. Culver  
DEPUTY PROPERTY TAX ADMINISTRATOR

KNOW ALL MEN BY THESE PRESENTS: That Anoka Hennepin Independent School District No. 11, a Minnesota Public Corporation, owner and proprietor of the following described property situated in the County of Anoka, State of Minnesota, to wit:

1559889  
OFFICE OF COUNTY RECORDER  
STATE OF MINNESOTA, COUNTY OF ANOKA

I hereby certify that the within instrument was filed in this office for record on the 4 April A.D., 2001 at 3:40 o'clock P.M., and was duly recorded in book 60 page 32

Maureen J. Devine  
County Recorder

By: mle  
Deputy

Outlot 10, Donnay's Oak Park 9th, Anoka County, Minnesota. Lot 1, Green Acres Addition, Anoka County, Minnesota. The East Half of Lot 2, Green Acres Addition, Anoka County, Minnesota. The West Half of Lot 2, Green Acres Addition, Anoka County, Minnesota, except that portion thereof described as follows: Commencing at the Northwest corner of said Lot 2; thence South along the West line of said Lot 2, which is also the Easterly line of Center Road as shown on the recorded plat, for a distance of 336 feet, to the actual point of beginning herein; thence East and parallel to the North line of said Lot 2 for a distance of 175 feet; thence South and parallel to the West line of said Lot 2 for a distance of 175 feet; thence West and parallel to said North line to the West line of said Lot 2; thence North along said West line to the actual point of beginning.

Have caused the same to be surveyed and platted as MADISON SCHOOL ADDITION and do hereby donate and dedicate to the public for public use forever the streets, road and easements for drainage and utility purposes only. In witness whereof said Anoka Hennepin Independent School District No. 11, a Minnesota Public Corporation, has caused these presents to be signed by its proper officer this 20<sup>th</sup> day of November, 2000.

Joseph M. Driscoll  
as Superintendent

STATE OF MINNESOTA  
COUNTY OF Anoka

The foregoing instrument was acknowledged before me this 20<sup>th</sup> day of November, 2000, by Joseph M. Driscoll, Superintendent of Anoka Hennepin Independent School District No. 11, a Minnesota Public Corporation on behalf of the corporation.

Pamela J. Gaantz  
NOTARY PUBLIC - MINNESOTA  
My Comm. Exp. Jan. 31, 2005

Pamela J. Gaantz  
Notary Public, Anoka County, Minnesota  
My Commission Expires January 31, 2005

I hereby certify that I have surveyed and platted the property described on this plat as MADISON SCHOOL ADDITION, that this plat is a correct representation of the survey, that all distances are correctly shown on the plat in feet and hundredths of a foot; that all monuments have been correctly placed in the ground as shown or will be correctly placed as required by the local governmental unit; that the outside boundary lines are correctly designated on the plat; and that there are no wetlands, in accordance with M.S. 505.02 Subdivision 1, or public highways to be designated other than as shown.

Terrence E. Rothenbacher  
Terrence E. Rothenbacher, Land Surveyor  
Minnesota License No. 20595

STATE OF MINNESOTA  
COUNTY OF Anoka

The foregoing Surveyor's Certificate was acknowledged before me this 15<sup>th</sup> day of November, 2000, by Terrence E. Rothenbacher, Land Surveyor, Minnesota License No. 20595.

Michelle L. Howland  
NOTARY PUBLIC - MINNESOTA  
My Comm. Exp. 01/31/2005

Michelle L. Howland  
Notary Public, Anoka County, Minnesota  
My Commission Expires January 31, 2005

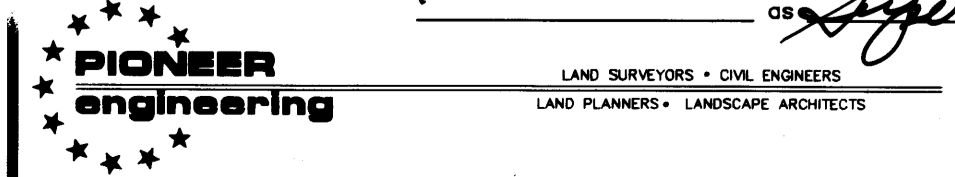
BLAINE, MINNESOTA

The plat of MADISON SCHOOL ADDITION was approved and accepted by the City Council of the City of Blaine, Minnesota, at a regular meeting thereof held this 14<sup>th</sup> day of December, 2000, if applicable, the written comments and recommendations of the Commissioner of Transportation and the County Highway Engineer have been received by the City or the prescribed 30 day period has elapsed without receipt of such comments and recommendations, as provided by Minnesota Statutes Section 508.03, Subdivision 2

By: Tom Ryan Mayor By: James Hall Clerk

Checked and approved this 30<sup>th</sup> day of March, 2001

By: Harvey D. Hain Deputy  
Anoka County Surveyor



Receipt # 2001026357 / \$ 55.00