

MAGERS MEADOWS

City of Ham Lake
County of Anoka
Sec. 29, T32, R23

KNOW ALL PERSONS BY THESE PRESENTS: That Gerald Albert Mager and Arlene Helen Mager as Trustees of the Gerald Albert Mager Trust U/A dated December 18, 2007, an Undivided one-half share and interest and Arlene Helen Mager and Gerald Albert Mager as Trustees of the Arlene Helen Mager Trust U/A dated December 18, 2007, an Undivided one-half share and interest, owners of the following described property:

The Northwest Quarter of the Northwest Quarter of Section 29, Township 32, Range 23, Anoka County, Minnesota.

Have caused the same to be surveyed and platted as MAGERS MEADOWS and do hereby dedicate to the public for public use the public ways and the drainage and utility easements as shown by this plat. Also dedicated to the County of Anoka the right of access onto County Road No. 16 as shown on this plat.

In witness whereof said Gerald Albert Mager and Arlene Helen Mager as Trustees of the Gerald Albert Mager Trust U/A dated December 18, 2007, have hereunto set their hands this 14th day of July, 2022.

Gerald Albert Mager
Gerald Albert Mager, Trustee of the Gerald Albert Mager Trust U/A dated December 18, 2007.

Arlene Helen Mager
Arlene Helen Mager, Trustee of the Gerald Albert Mager Trust U/A dated December 18, 2007.

STATE OF MINNESOTA
COUNTY OF Anoka

This instrument was acknowledged before me this 14th day of July, 2022 by Gerald Albert Mager and Arlene Helen Mager as Trustees of the Gerald Albert Mager Trust U/A dated December 18, 2007.

Lavae Mack (signature)
Lavae Mack (print name)
Notary Public, Anoka County, Minnesota
My Commission Expires January 31, 2027

In witness whereof said Arlene Helen Mager and Gerald Albert Mager as Trustees of the Arlene Helen Mager Trust U/A dated December 18, 2007, have hereunto set their hands this 14th day of July, 2022.

Arlene Helen Mager
Arlene Helen Mager, Trustee of the Arlene Helen Mager Trust U/A dated December 18, 2007.

Gerald Albert Mager
Gerald Albert Mager, Trustee of the Arlene Helen Mager Trust U/A dated December 18, 2007.

STATE OF MINNESOTA
COUNTY OF Anoka

This instrument was acknowledged before me this 14th day of July, 2022 by Arlene Helen Mager and Gerald Albert Mager as Trustees of the Arlene Helen Mager Trust U/A dated December 18, 2007.

Lavae Mack (signature)
Lavae Mack (print name)
Notary Public, Anoka County, Minnesota
My Commission Expires January 31, 2027

I Jason E. Rud do hereby certify that this plat was prepared by me or under my direct supervision; that I am a duly Licensed Land Surveyor in the State of Minnesota; that this plat is a correct representation of the boundary survey; that all mathematical data and labels are correctly designated on this plat; that all monuments depicted on this plat have been, or will be correctly set within one year; that all water boundaries and wet lands, as defined in Minnesota Statutes, Section 505.01, Subd. 3, as of the date of this certificate are shown and labeled on this plat; and all public ways are shown and labeled on this plat.

Dated this 14th day of July, 2022.

Jason E. Rud
Jason E. Rud, Licensed Land Surveyor
Minnesota License No. 41578

STATE OF MINNESOTA
COUNTY OF Anoka

This instrument was acknowledged before me this 14th day of July, 2022 by Jason E. Rud.

Lavae Mack (signature)
Lavae Mack (print name)
Notary Public, Anoka County, Minnesota
My Commission Expires January 31, 2027

City Council, City of Ham Lake, Minnesota

This plat of MAGERS MEADOWS was approved and accepted by the City Council of the City of Ham Lake, Minnesota at a regular meeting thereof held this 30th day of June, 2022 and said plat is in compliance with the provisions of Minnesota Statutes, Section 505.03, Subd. 2.

City Council, City of Ham Lake, Minnesota

By [Signature] Mayor
By [Signature] Clerk

County Surveyor

I hereby certify that in accordance with Minnesota Statutes, Section 505.021, Subd. 11, this plat has been reviewed and approved this 17th day of August, 2022.

David M. Ziegler
David M. Ziegler
Anoka County Surveyor

County Auditor/Treasurer

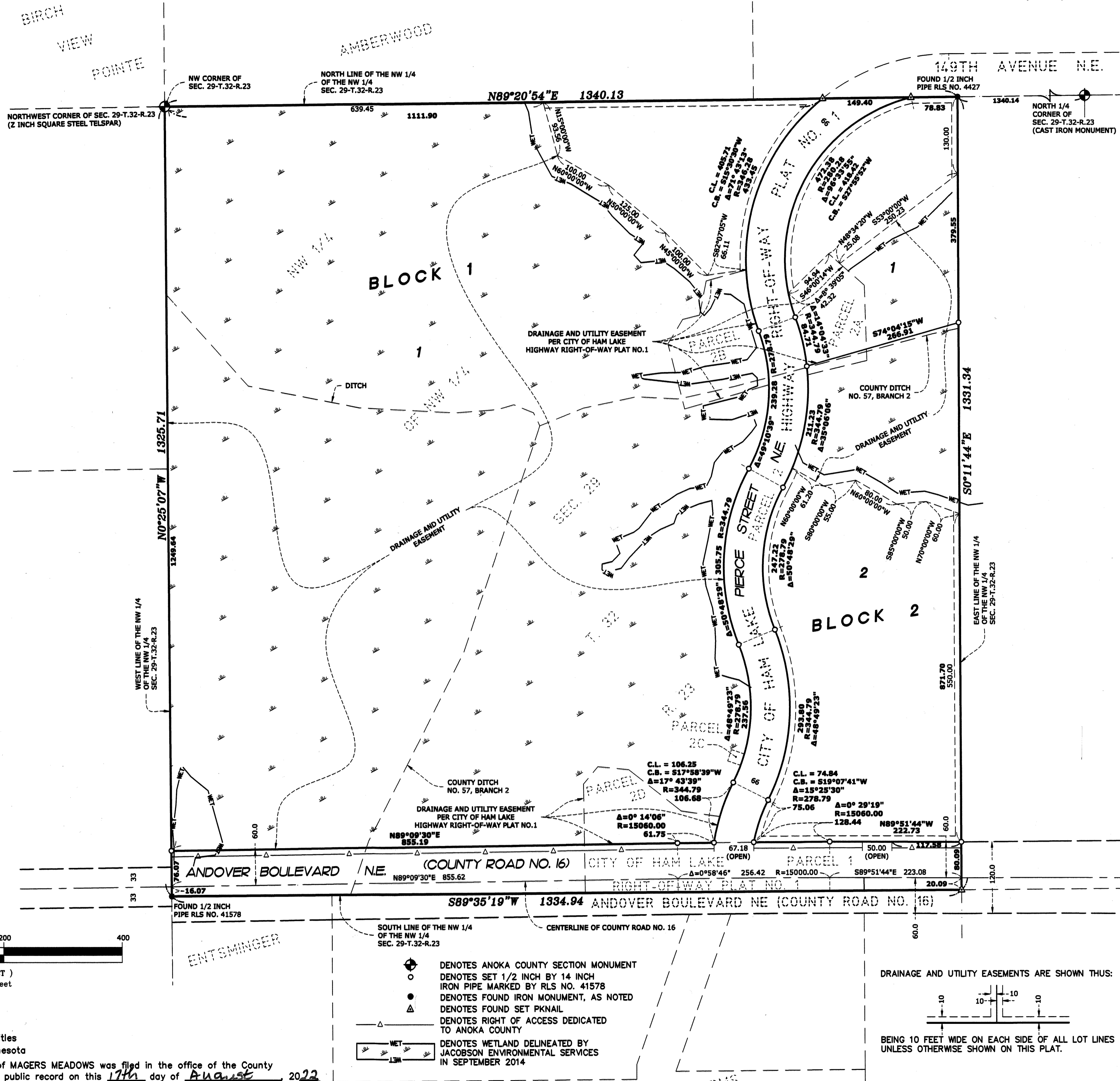
Pursuant to Minnesota Statutes, Section 505.021, Subd. 9, taxes payable in the year 2022 on the land hereinbefore described have been paid. Also, pursuant to Minnesota Statutes, Section 272.12, there are no delinquent taxes and transfer entered this 17th day of August, 2022.

Pamela J. LeBlanc
Property Tax Administrator
By Rose A. Tendoh Deputy

County Recorder/Registrar of Titles
County of Anoka, State of Minnesota

I hereby certify that this plat of MAGERS MEADOWS was filed in the office of the County Recorder/Registrar of Titles for public record on this 17th day of August, 2022 at 11:14 o'clock A.M. and was duly recorded as Document Number 2373510.001

Pamela J. LeBlanc
County Recorder/Registrar of Titles
By Rose A. Tendoh Deputy



- DENOTES ANOKA COUNTY SECTION MONUMENT
- DENOTES SET 1/2 INCH BY 14 INCH IRON PIPE MARKED BY RLS NO. 41578
- DENOTES FOUND IRON MONUMENT, AS NOTED
- ▲ DENOTES FOUND SET PKNAIL
- ▲— DENOTES RIGHT OF ACCESS DEDICATED TO ANOKA COUNTY
- WET DENOTES WETLAND DELINEATED BY JACOBSON ENVIRONMENTAL SERVICES IN SEPTEMBER 2014

DRAINAGE AND UTILITY EASEMENTS ARE SHOWN THIS:
BEING 10 FEET WIDE ON EACH SIDE OF ALL LOT LINES UNLESS OTHERWISE SHOWN ON THIS PLAT.

FOR THE PURPOSES OF THIS PLAT THE WEST LINE OF THE NORTHWEST QUARTER OF THE NORTHWEST QUARTER OF SECTION 29, TOWNSHIP 32, RANGE 23, IS ASSUMED TO HAVE A BEARING OF NORTH 00 DEGREES 25 MINUTES 07 SECONDS WEST.

\$56.00

E.G. RUD & SONS, INC.
EST. 1877 Professional Land Surveyors