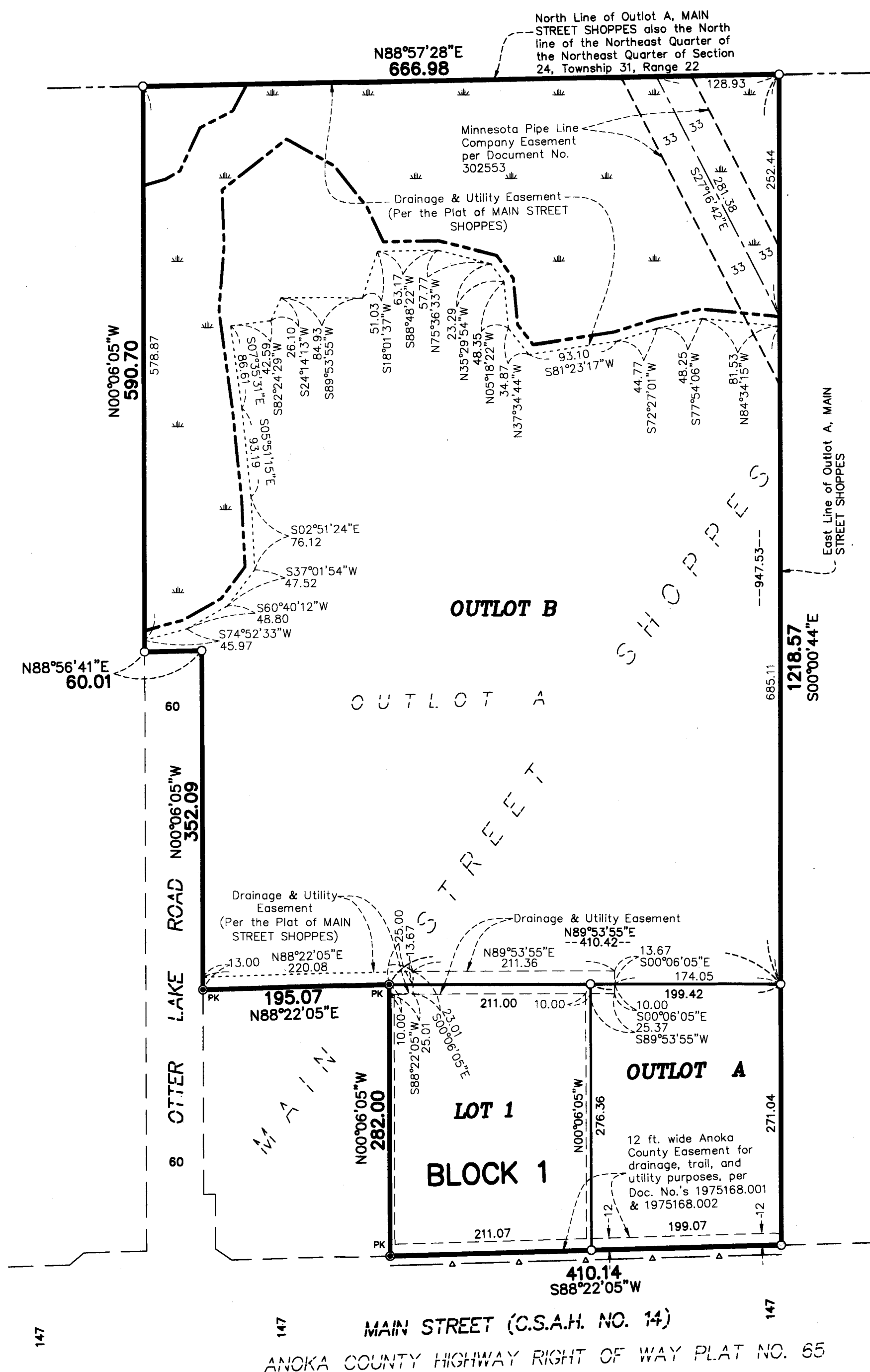


# MAIN STREET SHOPPES 2ND ADDITION



KNOW ALL PERSONS BY THESE PRESENTS: That CM Properties 14, LLC, a Minnesota limited liability company, owner of the following described property:

Outlot A, MAIN STREET SHOPPES, Anoka County, Minnesota

Has caused the same to be surveyed and platted as MAIN STREET SHOPPES 2ND ADDITION and does hereby dedicate to the public for public use the drainage and utility easements as shown on this plat.

In witness whereof said CM Properties 14, LLC, a Minnesota limited liability company, has caused these presents to be signed by its proper officer this 19<sup>th</sup> day of MARCH, 2019.

CM PROPERTIES 14, LLC

*Bruce A. Miller*  
Bruce A. Miller, Vice President

STATE OF MINNESOTA  
COUNTY OF DACOTA

This instrument was acknowledged before me on March 19, 2019 by Bruce A. Miller, Vice President of CM Properties 14, LLC, a Minnesota limited liability company.

*Janet J. Probst* (Signed)  
Janet J. Probst (Printed)  
Notary Public, DACOTA COUNTY, MINNESOTA  
My commission expires January 31, 2023

I Thomas R. Balluff do hereby certify that this plat was prepared by me or under my direct supervision; that I am a duly Licensed Land Surveyor in the State of Minnesota; that this plat is a correct representation of the boundary survey; that all mathematical data and labels are correctly designated on this plat; that all monuments depicted on this plat have been, or will be correctly set within one year; that all water boundaries and wet lands, as defined in Minnesota Statutes, Section 505.01, Subd. 3, as of the date of this certificate are shown and labeled on this plat; and all public ways are shown and labeled on this plat.

Dated this 6<sup>th</sup> day of MARCH, 2019.

*Thomas R. Balluff*  
Thomas R. Balluff, Licensed Land Surveyor  
Minnesota License No. 40361

STATE OF Minnesota  
COUNTY OF Anoka

This instrument was acknowledged before me on March 6, 2019 by Thomas R. Balluff.

*Cynthia J. Morin* (Signed)  
Cynthia J. Morin (Printed)  
Notary Public, Henriepin County, Minnesota  
My commission expires January 31, 2020

CITY COUNCIL, CITY OF LINO LAKES, MINNESOTA

This plat of MAIN STREET SHOPPES 2ND ADDITION was approved and accepted by the City Council of the City of Lino Lakes, Minnesota at a regular meeting thereof held this 11<sup>th</sup> day of February, 2019, and said plat is in compliance with the provisions of Minnesota Statutes, Section 505.03, Subd. 2.

CITY COUNCIL, CITY OF LINO LAKES, MINNESOTA

By: *[Signature]* Mayor  
By: *[Signature]* Clerk

COUNTY SURVEYOR

I hereby certify that in accordance with Minnesota Statutes, Section 505.021, Subd. 11, this plat has been reviewed and approved this 11<sup>th</sup> day of April, 2019.

By: *Charles F. Gitzen*  
Charles F. Gitzen  
Anoka County Surveyor

COUNTY AUDITOR/TREASURER

Pursuant to Minnesota Statutes, Section 505.021, Subd. 9, taxes payable in the year 2019 on the land hereinbefore described have been paid. Also, pursuant to Minnesota Statutes, Section 272.12, there are no delinquent taxes and transfer entered this 11<sup>th</sup> day of April, 2019.

By: *Jonell M. Sawyer*  
Jonell M. Sawyer  
Property Tax Administrator  
By: *[Signature]* Deputy

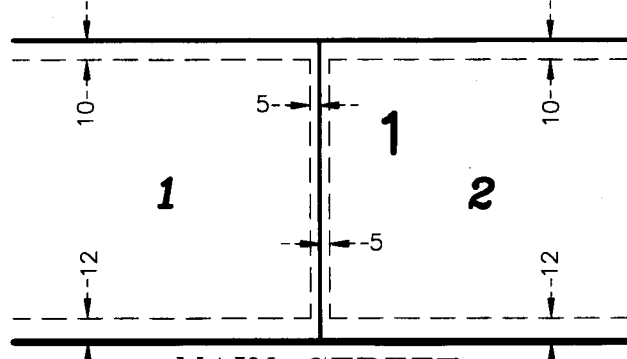
COUNTY RECORDER/REGISTRAR OF TITLES

County of Anoka, State of Minnesota

I hereby certify that this plat of MAIN STREET SHOPPES 2ND ADDITION was filed in the office of the County Recorder/Registrar of Titles for public record on this 11<sup>th</sup> day of April, 2019 at 1:50 o'clock P.M. and was duly recorded as Document Number 2224339.004.

By: *Jonell M. Sawyer*  
Jonell M. Sawyer  
County Recorder/Registrar of Titles  
By: *[Signature]* Deputy

DRAINAGE AND UTILITY EASEMENTS ARE SHOWN THUS:

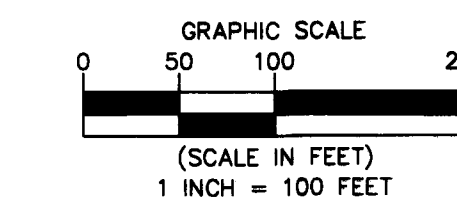


12 ft. wide Anoka County Easement for drainage, trail, and utility purposes, per Doc. No.'s 1975168.001 & 1975168.002

- Denotes 5/8 inch by 14 inch Rebar, set or to be set within one year of recording of this plat and marked with license number 40361
- ⊙ Denotes Found PK Nail
- △— Denotes Right of Access dedicated to Anoka County per the plat of MAIN STREET SHOPPES
- ▨ Denotes Wet Land as shown per the plat of MAIN STREET SHOPPES



For the purposes of this plat, the North Line of Outlot A, MAIN STREET SHOPPES is assumed to have a bearing of North 88 degrees 57 minutes 28 seconds East.



\$56.00