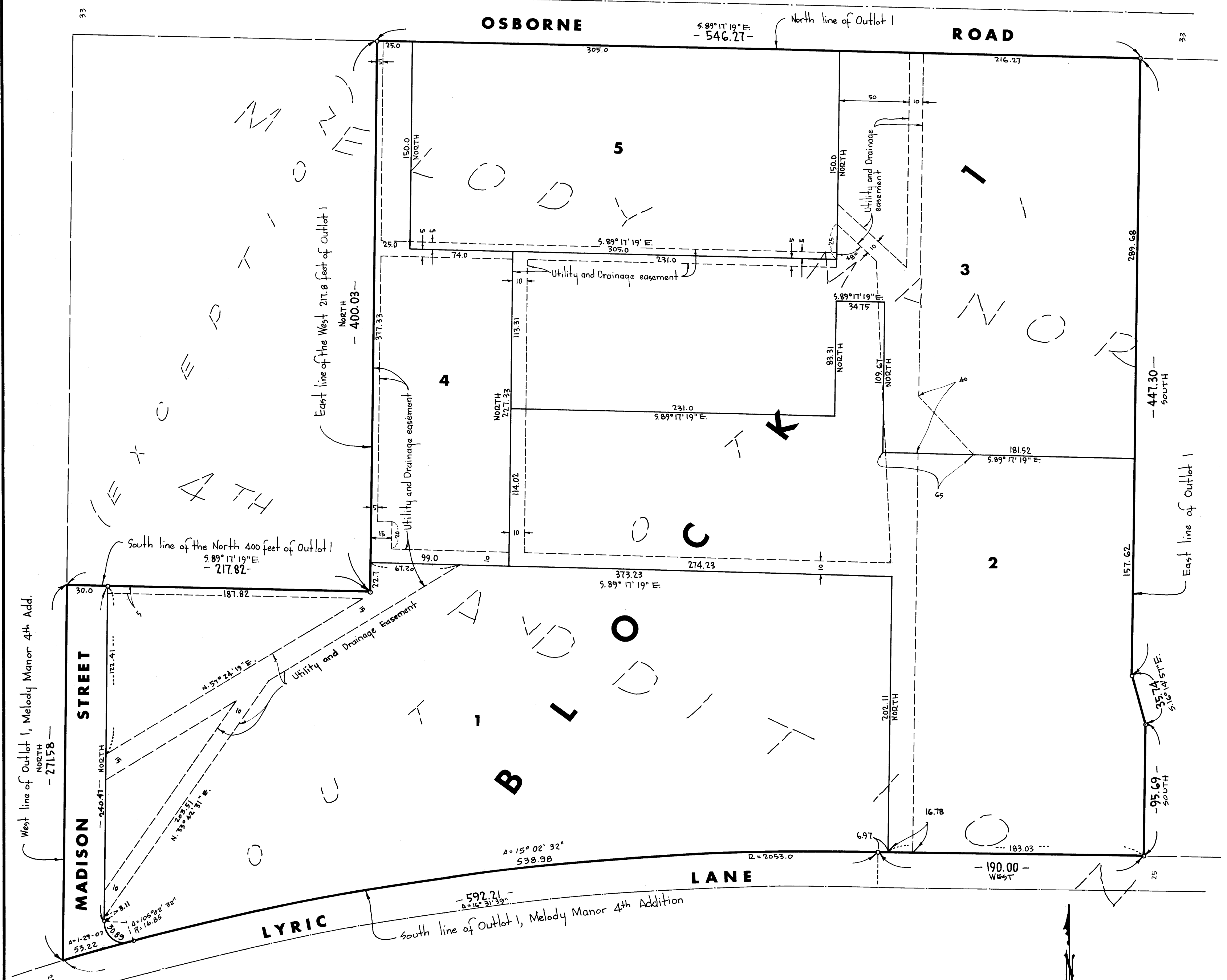


# MAPLE MANOR ADDITION

CITY OF FRIDLEY

COUNTY OF ANOKA



KNOW ALL MEN BY THESE PRESENTS: That Highland Park Development Co., a Partnership, owners and proprietors of the following described property situate in the State of Minnesota and County of Anoka, to-wit: Outlet 1, Melody Manor 4th Addition except the north 400 feet of the west 217.8 feet thereof; have caused the same to be surveyed and platted as MAPLE MANOR ADDITION and do hereby donate and dedicate to the public for public use forever the Street and Utility & Drainage Easements as shown on this plat; in witness whereof Highland Park Development Co. have hereunto set their hands and seals this 19th day of April A.D. 1969.

In Presence of: HIGHLAND PARK DEVELOPMENT CO.  
*Don R. Gustafson* As to Joseph Gitis and Winslow R. Chamberlain  
*Kathryn L. Martinson* Chamberlain *Joseph Gitis*  
*Winslow R. Chamberlain*

State of Minnesota County of Anoka On this 19th day of April A.D. 1969, before me, a Notary Public, within and for said County and State, personally appeared Joseph Gitis and Winslow R. Chamberlain each by me duly sworn, did say that they are the partners in Highland Park Development Co., the partnership named in the foregoing instrument, and they acknowledged that they executed the same to be their own free act and deed of said partnership.

KATHYRN L. MARTINSON  
 Notary Public, Hennepin County, Minn. My Commission Expires Feb. 26, 1976  
*Kathryn L. Martinson*  
 Notary Public, Anoka County, Minnesota  
 My Commission Expires Feb 26 1976

I hereby certify that I have surveyed and platted the property described on this plat as MAPLE MANOR ADDITION; that this plat is a correct representation of said survey; that all distances are correctly shown on the plat in feet and decimals of a foot; that all monuments have been correctly placed in the ground as shown on said plat; that the outside boundary lines are correctly designated on said plat, and that there are no wet lands or public highways to be designated on said plat other than as shown thereon.

*E. A. Rathbun*  
 Surveyor - Minnesota Registration No. 3795

State of Minnesota County of Hennepin Above certificate subscribed and sworn to before me, a Notary Public within and for said County and State, this 13th day of May A.D. 1969.

*Warren O. Olson*  
 Notary Public, Hennepin County, Minnesota  
 My Commission Expires July 12, 1974  
 WARREN O. OLSON  
 Notary Public, Hennepin County, Minn.  
 My Commission Expires July 12, 1974

We hereby certify that the City Council of the City of Fridley, Anoka County, Minnesota, duly accepted and approved this plat of MAPLE MANOR ADDITION, at a regular meeting thereof held this 21 day of APRIL A.D. 1969.

CITY OF FRIDLEY, MINNESOTA  
 By *Jack O. Kirkham* Mayor  
 By *Maurin C. Brunser* Clerk

Checked and approved this 23rd day of May A.D. 1969.  
*Robert W. Anderson*  
 Anoka County Surveyor

OFFICE OF REGISTER OF DEEDS  
 STATE OF MINNESOTA, COUNTY OF ANOKA  
 I hereby certify that the within instrument was filed in this office for record on the 19th day of May 1969 at 12 o'clock P.M., and was duly recorded in book 2 of Plats, page 7  
*Ted J. Campbell*  
 Register of Deeds  
 By *Margaret Russell* Deputy

TAXES PAID  
 This 27th day of May 1969  
*Henneth W. Campbell*  
 Auditor, Anoka County, Minn.  
 By *Mary Anne Johnson*

I HEREBY CERTIFY THAT THE TAXES PAYABLE IN THE YEAR 1969 ON THE LANDS DESCRIBED WITHIN ARE PAID  
*Robert A. Peterson*  
 Anoka County Treasurer

Suburban Engineering, Inc.  
 - Engineers - - Surveyors -

Scale 1 inch = 50 feet May, 1969  
 o Denotes iron monument  
 Bearings shown are assumed

