

# MARQUEST MEADOWS NORTH

KNOW ALL PERSONS BY THESE PRESENTS: That G & G Land Development, LLC, a Minnesota limited liability company, owner of the following described property:

The South 330 feet of the Northwest Quarter of the Southeast Quarter of Section 3, Township 31, Range 23, Anoka County, Minnesota, except the East 660 feet thereof.

Has caused the same to be surveyed and platted as MARQUEST MEADOWS NORTH and does hereby dedicate to the public for public use the public ways and the drainage and utility easements as shown by this plat.

In witness whereof said G & G Land Development, LLC, a Minnesota limited liability company, has caused these presents to be signed by its proper officer this 14 day of August, 2015.

*Gregory E. Knutson*  
Gregory E. Knutson, Chief Manager

STATE OF MINNESOTA  
COUNTY OF Anoka

This instrument was acknowledged before me this 14<sup>th</sup> day of August, 2015 by Gregory E. Knutson, Chief Manager of G & G Land Development, LLC, a Minnesota limited liability company.

*Nicole A. Johnson*  
Nicole A. Johnson  
Notary Public, Anoka County, Minnesota  
My Commission Expires January 31, 2020

I, James E. Napier do hereby certify that this plat was prepared by me or under my direct supervision; that I am a duly Licensed Land Surveyor in the State of Minnesota; that this plat is a correct representation of the boundary survey; that all mathematical data and labels are correctly designated on this plat; that all monuments depicted on this plat have been, or will be correctly set within one year; that all water boundaries and wet lands, as defined in Minnesota Statutes, Section 505.01, Subd. 3, as of the date of this certificate are shown and labeled on this plat; and all public ways are shown and labeled on this plat.

Dated this 14<sup>th</sup> day of August, 2015.

*James E. Napier*  
James E. Napier, Licensed Land Surveyor  
Minnesota License No. 25343

STATE OF MINNESOTA  
COUNTY OF ANOKA

This instrument was acknowledged before me this 14<sup>th</sup> day of August, 2015 by James E. Napier.

*Nicole A. Johnson*  
Nicole A. Johnson  
Notary Public, Anoka County, Minnesota  
My Commission Expires January 31, 2020

City Council, City of Blaine, Minnesota

This plat of MARQUEST MEADOWS NORTH was approved and accepted by the City Council of the City of Blaine, Minnesota at a regular meeting thereof held this 5<sup>th</sup> day of June, 2014, and said plat is in compliance with the provisions of Minnesota Statutes, Section 505.03, Subd. 2.

City Council, City of Blaine, Minnesota

By *Tom Payne* Mayor

By *Carol Johnson* Clerk

County Surveyor

I hereby certify that in accordance with Minnesota Statutes, Section 505.021, Subd. 11, this plat has been reviewed and approved this 18<sup>th</sup> day of AUGUST, 2015.

*Larry D. Hahn*  
Larry D. Hahn  
Anoka County Surveyor

County Auditor/Treasurer

Pursuant to Minnesota Statutes, Section 505.021, Subd. 9, taxes payable in the year 2015 on the land hereinbefore described have been paid. Also, pursuant to Minnesota Statutes, Section 272.12, there are no delinquent taxes and transfer entered this 18 day of August, 2015.

*Jonell M. Sawyer*  
Jonell M. Sawyer  
Property Tax Administrator

By *Maiziff* Deputy

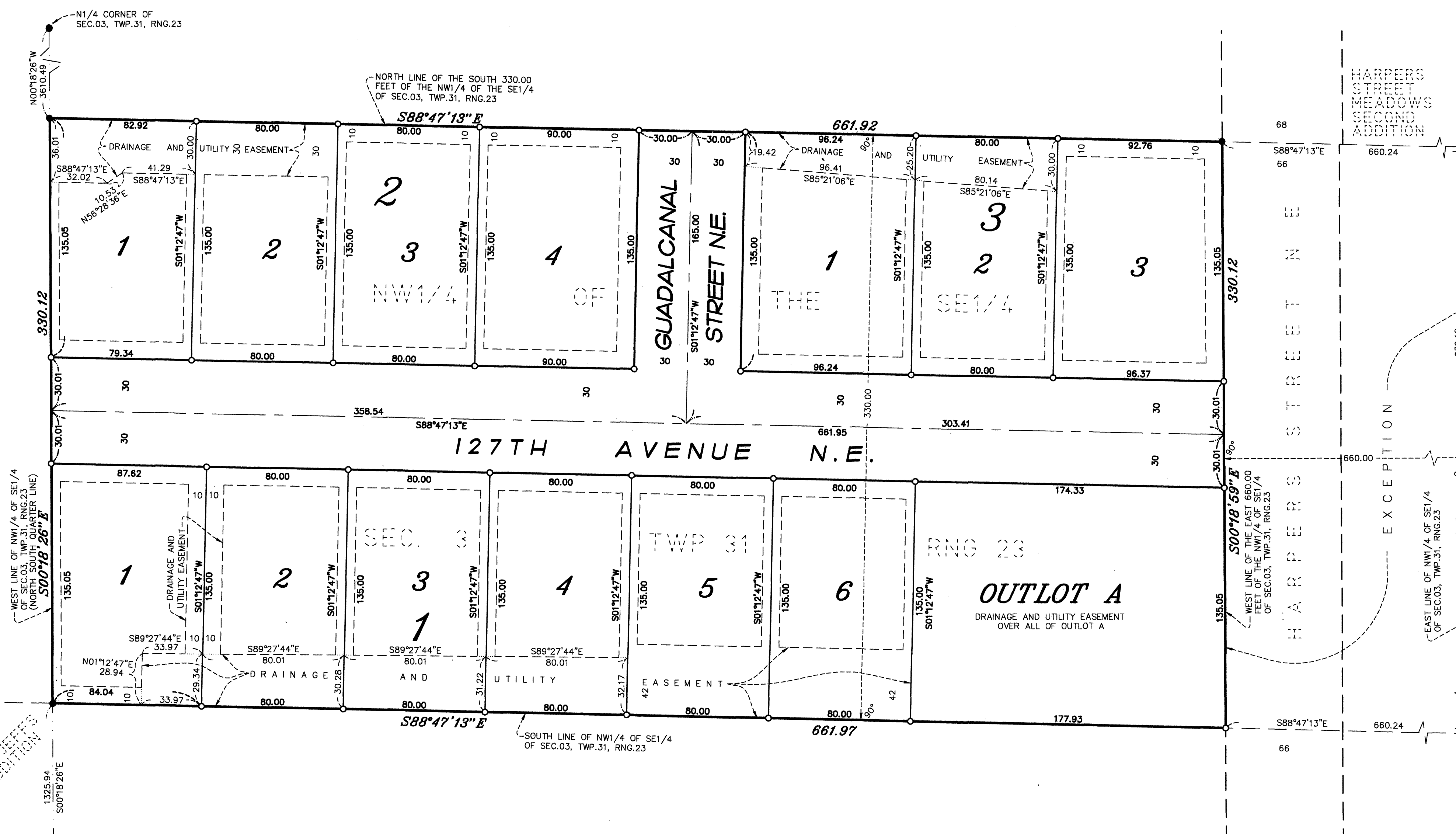
County Recorder/Registrar of Titles

County of Anoka, State of Minnesota

I hereby certify that this plat of MARQUEST MEADOWS NORTH was filed in the office of the County Recorder/Registrar of Titles for public record on this 19 day of August, 2015, at 11:49 o'clock A.M. and was duly recorded in Book 78 Page 30, as Document No. 218920.002.

*Jonell M. Sawyer*  
Jonell M. Sawyer  
County Recorder/Registrar of Titles

By *Maiziff* Deputy

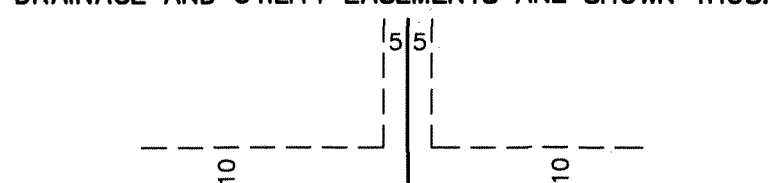


MARK AND SET IRON PIPE MONUMENTS AT CORNERS

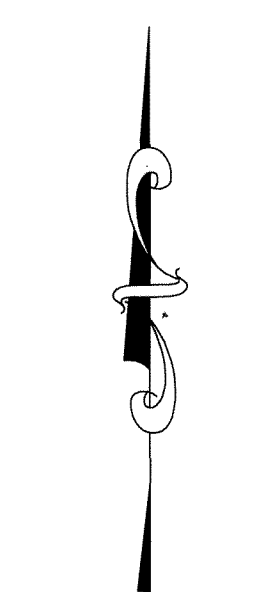
- DENOTES 1/2 INCH BY 14 INCH IRON PIPE MARKED BY RLS NO. 25343.
- DENOTES FOUND IRON MONUMENT
- ⊕ DENOTES ANOKA COUNTY CAST IRON MONUMENT

FOR THE PURPOSES OF THIS PLAT THE WEST LINE OF THE NORTHWEST QUARTER OF THE SOUTHEAST QUARTER OF SECTION 3, TOWNSHIP 31, RANGE 23 IS ASSUMED TO HAVE A BEARING OF SOUTH 00 DEGREES 18 MINUTES 26 SECONDS EAST.

DRAINAGE AND UTILITY EASEMENTS ARE SHOWN THUS:

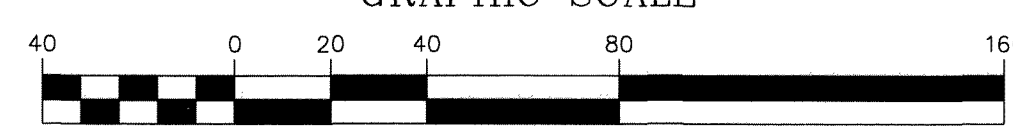


BEING 5 FEET IN WIDTH, AND ADJOINING SIDE LOT LINES, AND 10 FEET IN WIDTH AND ADJOINING SIDE LOT LINES, AND REAR LOT LINES, UNLESS OTHERWISE SHOWN ON THIS PLAT.



NORTH

GRAPHIC SCALE



(SCALE IN FEET)  
1 inch = 40 feet



# 56