

MARSHALL MANOR

— Township of Ham Lake — County of Anoka —

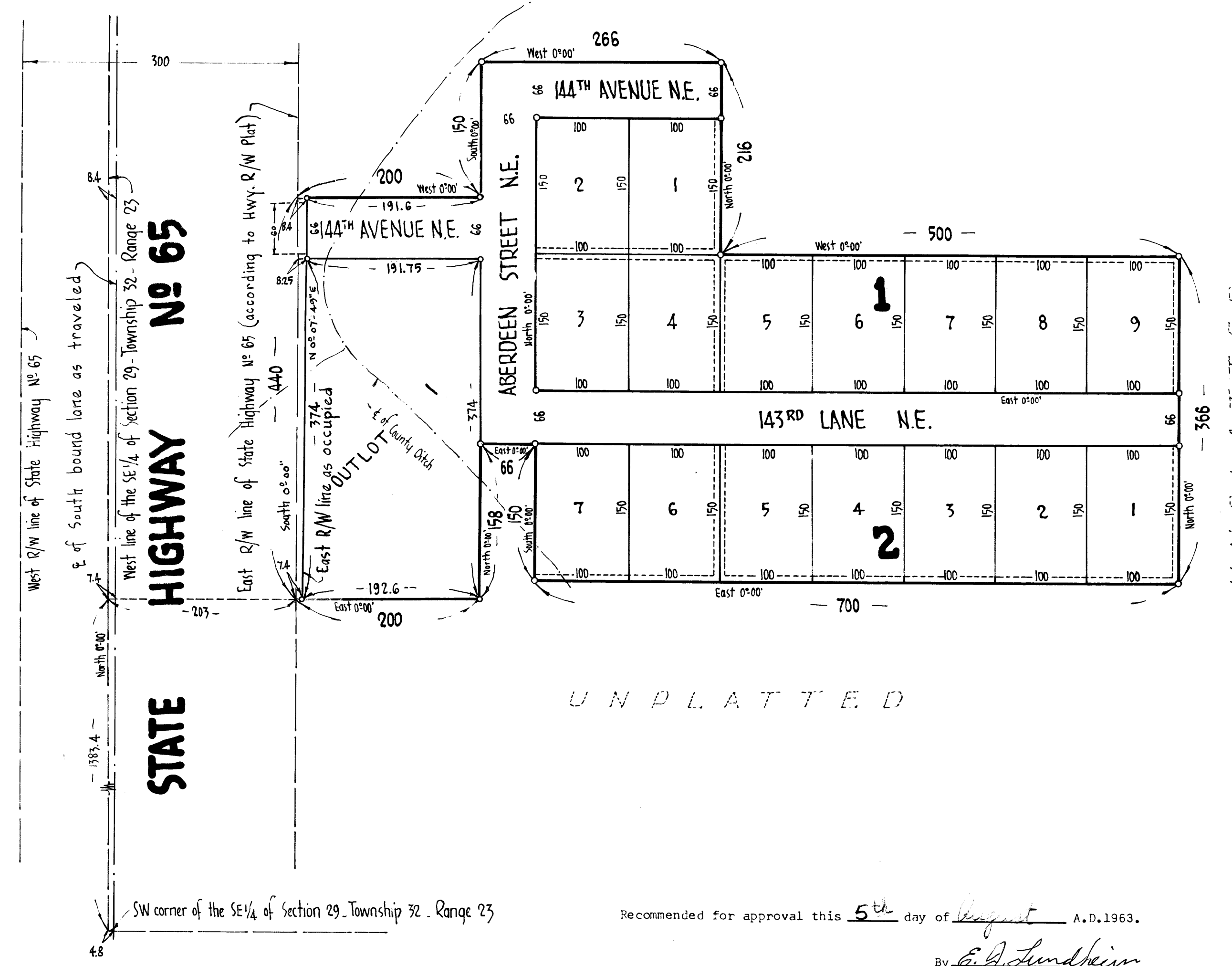
o Denotes Iron Monument
 Bearings are assumed

Denotes Utility and Drainage Easements, being 5' on each side of the lot line.

Scale 1" = 100'
 June 1963



UNPLATTED



UNPLATTED

KNOW ALL MEN BY THESE PRESENTS: that Verna Titterud, widow, owner and proprietor of the following described property situate in the State of Minnesota, County of Anoka, to-wit: That part of the Southeast 1/4 of Section 29, Township 32, Range 23 described as commencing at the Southwest corner of said Southeast 1/4; thence North along the West line of said Southeast 1/4 a distance of 1383.4 feet (said West line has an assumed bearing of North 0°-00'); thence on a bearing of East a distance of 203 feet to the East Right of Way line of State Highway No. 65, also being the point of beginning of the tract of land to be described; thence continuing on a bearing of East a distance of 200 feet; thence on a bearing of North a distance of 158 feet; thence on a bearing of East a distance of 66 feet; thence on a bearing of South a distance of 150 feet; thence on a bearing of East a distance of 700 feet; thence on a bearing of North a distance of 366 feet; thence on a bearing of West a distance of 500 feet; thence on a bearing of North a distance of 216 feet; thence on a bearing of West a distance of 266 feet; thence on a bearing of South a distance of 150 feet; thence on a bearing of West a distance of 200 feet more or less to the East Right of Way line of said State Highway No. 65; thence South along the said East Right of Way line a distance of 440 feet to the point of beginning; has caused the same to be surveyed and platted as MARSHALL MANOR; and do hereby donate and dedicate to the public for public use forever the Street, Lane and Avenues as shown on the annexed plat, subject to Utility and Drainage Easements as shown on the annexed plat. In witness whereof said Verna Titterud, widow, has hereunto set her hand and seal this 6th day of August A.D.1963.

In Presence of
 Dorothy Richardson, ss to Verna Titterud
 Marilyn Skjoldager, ss to Verna Titterud

State of Minnesota County of Anoka On this 6th day of August A.D.1963, before me, a Notary Public personally appeared Verna Titterud, widow, to me known to be the person described in and who executed the foregoing instrument and she acknowledged that she executed the same as her own free act and deed.

Dorothy Richardson
 Notary Public, Anoka County, Minnesota
 DOROTHY RICHARDSON
 My Commission Expires Notary Public, Anoka County, Minn.
 My Commission Expires April 14, 1969

I hereby certify that I have surveyed and platted the property described on this plat as MARSHALL MANOR; that this plat is a correct representation of said survey; that all distances are correctly shown on the plat in feet and decimals of a foot; that the monuments for guidance of future surveys have been correctly placed in the ground as shown on the plat; that the outside boundary lines are correctly designated on the plat, and that there are no wet lands or public highways to be designated on said plat other than as shown thereon.

E. A. Rathbun
 Surveyor - Minnesota Reg. No. 3795

Recommended for approval this 5th day of August A.D.1963.

By E. A. Lundheim
 County Highway Engineer
 Anoka County, Minnesota

This plat was approved and accepted by the Board of County Commissioners of the County of Anoka, State of Minnesota at a regular meeting held this 6th day of August A.D.1963.

By Edward L. Linder
 Chairman
 By Kenneth W. Campbell
 County Auditor
 By W. J. Meyer
 Deputy

Checked and approved this 5th day of August A.D.1963.

By Roland W. Anderson
 Anoka County Surveyor

State of Minnesota County of Hennepin The surveyors certificate subscribed and sworn to before me, a Notary Public, this 18th day of June A.D.1963.

Alann O. Olson
 Notary Public, Hennepin County, Minnesota
 My Commission Expires Notary Public, Hennepin County, Minn.
 My Commission Expires July 12, 1967

The annexed plat of MARSHALL MANOR was approved by the Planning and Zoning Commission and by the Town Board of the Township of Ham Lake at a regular meeting held this 5th day of August A.D.1963.

Walter Johnson
 Chairman of Town Board
Mrs. George Erickson
 Clerk of Town Board

This plat was approved as to form and execution this 5th day of August A.D.1963.

By Robert W. Johnson
 County Attorney, Anoka, Minnesota

OFFICE OF REGISTER OF DEEDS
 STATE OF MINNESOTA, COUNTY OF ANOKA } ss

I hereby certify that the within instrument was filed in this office for record on the 6th day of August A.D. 1963 at 12:40 o'clock P.M., and was duly recorded in book 29 of Plats page 10

Gertrude Skinner
 Register of Deeds
 By Margaret Russell
 Deputy

Suburban
Engineering, Inc.
 Engineers - Surveyors

I HEREBY CERTIFY THAT TAXES FOR THE YEAR 1962 ON THE LANDS DESCRIBED WITHIN ARE PAID
Robert A. Peterson
 County Treasurer

TAXES PAID
 This 6th day of Aug. 1963
Kenneth W. Campbell
 Auditor, Anoka County, Minn.
 By W. J. Meyer
 Deputy