

# MARSZALEK'S PARK VIEW ESTATES

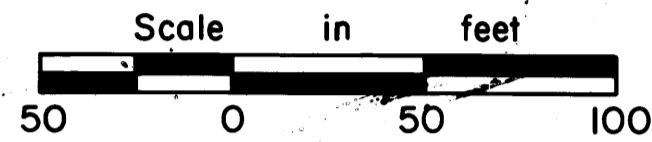
City of Coon Rapids  
Anoka County, Minn.

## 2<sup>ND</sup> ADDITION

642758

OFFICE OF COUNTY RECORDS  
STATE OF MINNESOTA, COUNTY OF ANOKA  
I hereby certify that the within instrument was filed in this office for record on this 17<sup>th</sup> day of April, 1984, A.D. at 4:15 o'clock P.M. and was duly recorded in book 39 of PLATS, page 48.

*John G. Marszalek*  
*Kathryn J. Marszalek*

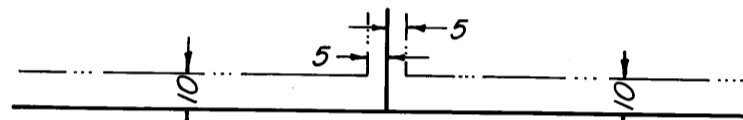


Scale: 1 inch = 50 feet

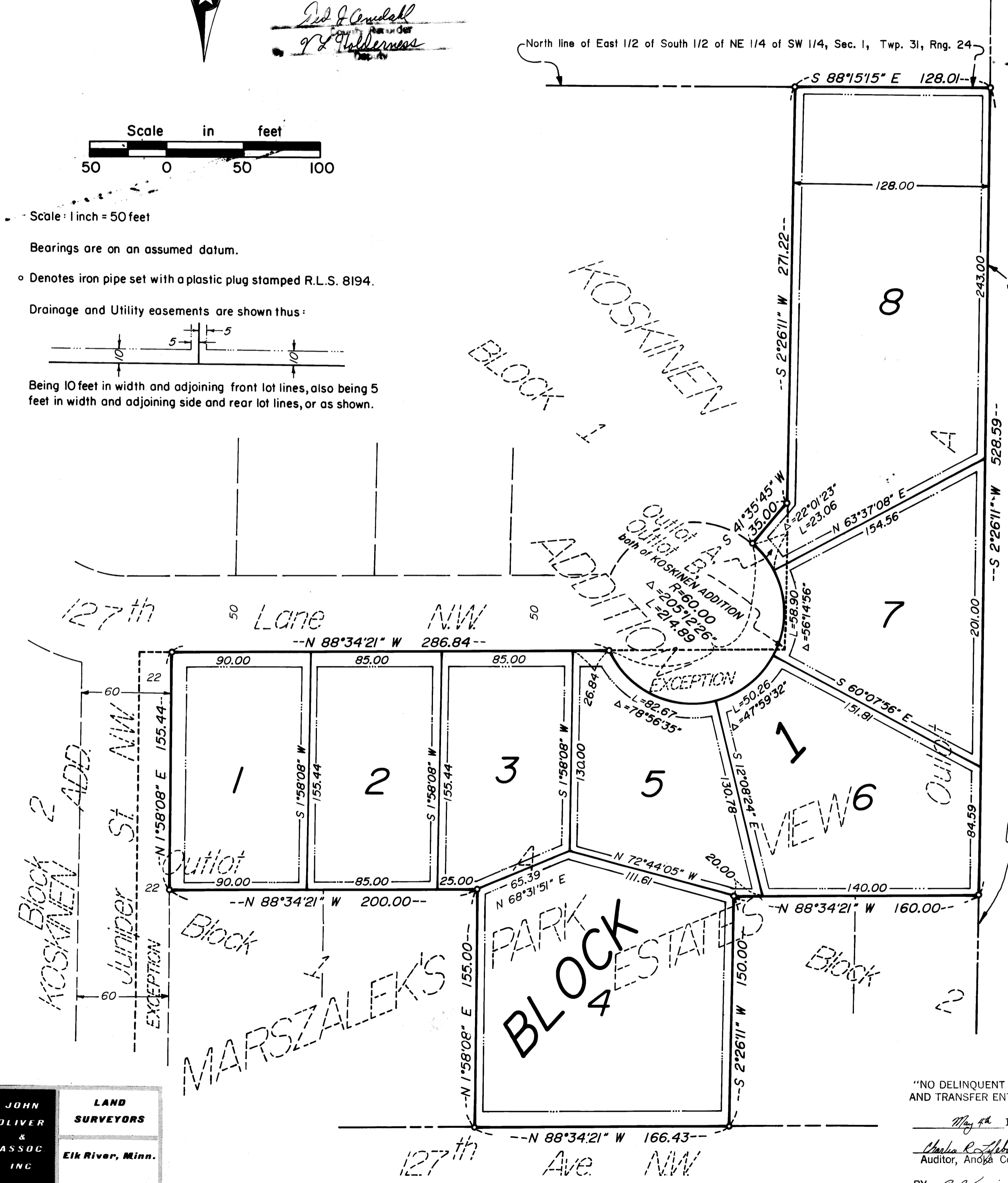
Bearings are on an assumed datum.

o Denotes iron pipe set with a plastic plug stamped R.L.S. 8194.

Drainage and Utility easements are shown thus:



Being 10 feet in width and adjoining front lot lines, also being 5 feet in width and adjoining side and rear lot lines, or as shown.



KNOW ALL MEN BY THESE PRESENTS: That John G. Marszalek and Kathryn J. Marszalek, husband and wife, fee owners and Blaine State Bank, a Minnesota corporation, mortgagee, of the following described property situated in the State of Minnesota, County of Anoka, to-wit:

Outlot "A" of the duly recorded plat of MARSZALEK'S PARK VIEW ESTATES, said Anoka County, except that part of said Outlot "A" lying within the duly recorded plat of KOSKINEN ADDITION, said Anoka County.

And that John G. Marszalek and Kathryn J. Marszalek, husband and wife, fee owners, of the following described property situated in the State of Minnesota, County of Anoka, to-wit:

Outlot "A" and Outlot "B" of the duly recorded plat of KOSKINEN ADDITION, said Anoka County.

Have caused the same to be surveyed and platted as MARSZALEK'S PARK VIEW ESTATES 2ND ADDITION, and do hereby donate and dedicate to the public for the public use forever the easements as shown on this plat for drainage and utility purposes only. In witness whereof said John G. Marszalek and Kathryn J. Marszalek have hereunto set their hands and seals this 17<sup>th</sup> day of April, 1984.

*John G. Marszalek*  
John G. Marszalek  
*Kathryn J. Marszalek*  
Kathryn J. Marszalek

Also in witness whereof, said Blaine State Bank has caused these presents to be signed by its proper officers and its corporate seal to be hereunto affixed this 17<sup>th</sup> day of April, 1984:

By: *Om W. Relek* its: President By: *Sandra L. Johnson* its: Asst. Vice Pres.  
BLAINE STATE BANK

State of Minnesota, County of Anoka  
The foregoing instrument was acknowledged before me this 17<sup>th</sup> day of April, 1984, by John G. Marszalek and Kathryn J. Marszalek, husband and wife.

*Judy K. Leaf*  
Notary Public, Anoka County, Minnesota  
My commission expires: FEBRUARY 6, 1991

The foregoing instrument was acknowledged before me this 17<sup>th</sup> day of April, 1984, by *Om W. Relek*, the President, and by *Sandra L. Johnson*, the Asst. Vice Pres., of Blaine State Bank, a Minnesota corporation, on behalf of the corporation.

*Judy K. Leaf*  
Notary Public, Anoka County, Minnesota  
My commission expires: FEBRUARY 6, 1991

I hereby certify that I have surveyed and platted the property described in this plat as MARSZALEK'S PARK VIEW ESTATES 2ND ADDITION and that this plat is a correct representation of said survey; that all monuments have been correctly placed in the ground as shown on the plat; that all distances are correctly shown on the plat in feet and hundredths of a foot; that the outside boundary lines are correctly designated on the plat; and that there are no wet lands or public highways to be designated on the plat other than as shown thereon.

*John O. Oliver*  
John O. Oliver, Land Surveyor  
Minnesota License No. 8194

State of Minnesota, County of Sherburne  
The foregoing instrument was acknowledged before me this 12 day of April, 1984, by John O. Oliver, Land Surveyor.

*Delilah L. Volkert*  
Notary Public, Sherburne County, Minnesota  
My commission expires: Sept. 21, 1990

Annexed plat of MARSZALEK'S PARK VIEW ESTATES 2ND ADDITION was approved by the Planning Commission of the City of Coon Rapids, Minnesota this 13<sup>th</sup> day of March, 1984.

By: *Donna M. Naevie*, Chairman

Annexed plat of MARSZALEK'S PARK VIEW ESTATES 2ND ADDITION was approved by the City Council of Coon Rapids, Minnesota at a regular meeting thereof held this 3<sup>rd</sup> day of April, 1984.

By: *Robert B. Lewis*, Mayor Attest: *Lorraine M. Menage*, Clerk

This plat has been checked and approved this 11<sup>th</sup> day of May, 1984.

*Donald C. Brisley*  
Anoka County Treasurer

JOHN OLIVER & ASSOC. INC. LAND SURVEYORS Elk River, Minn.

"NO DELINQUENT TAXES AND TRANSFER ENTERED"  
May 4<sup>th</sup> 1984  
*Charles R. Fibbe*  
Auditor, Anoka County  
BY *G. P. Kaminski*  
Deputy

I HEREBY CERTIFY THAT THE TAXES PAYABLE IN THE YEAR 1984 ON THE LANDS DESCRIBED WITHIN ARE PAID  
*Donald C. Brisley*  
Anoka County Treasurer

ADD 30430-M 11 M 15001\*

