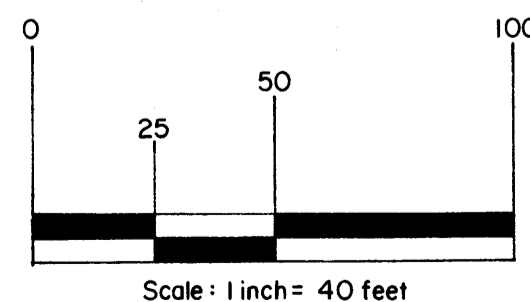
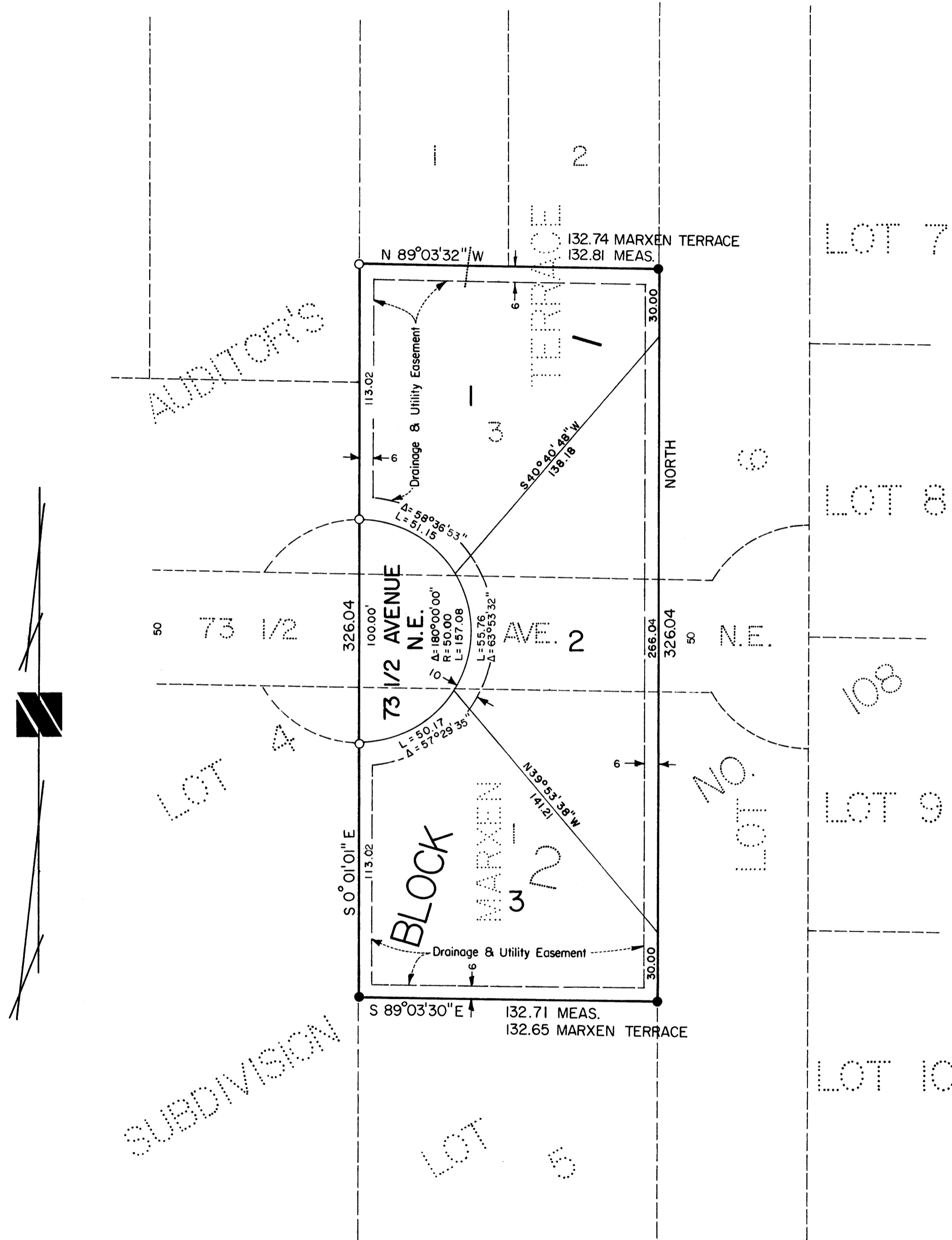


MARXEN TERRACE SECOND ADDITION

CITY OF FRIDLEY COUNTY OF ANOKA



Bearings are on an assumed datum
 ● Denotes iron monument found
 ○ Denotes iron monument set and capped RLS 10832

KNOW ALL MEN BY THESE PRESENTS that Thomas E. Marxen and Sharron L. Marxen, husband and wife, owners of the following described property situated in the City of Fridley, Anoka County, Minnesota:

Lot 3, Block 1, Marxen Terrace, Lot 1, Block 2, Marxen Terrace and vacated 73 1/2 Avenue, NE, between the west and east lines of Marxen Terrace, Document No. 473904.

Have caused the same to be surveyed and platted as MARXEN TERRACE SECOND ADDITION and do hereby dedicate to the public for the public use forever the utility and drainage easements and avenue as shown on the plat. In witness whereof said Thomas E. Marxen and Sharron L. Marxen, husband and wife, have caused these presents to be signed this 22nd day of August, 1977.

Thomas E. Marxen
 Thomas E. Marxen
Sharron L. Marxen
 Sharron L. Marxen

State of Minnesota)
 County of Anoka)

The foregoing instrument was acknowledged before me this 22nd day of August, 1977, by Thomas E. Marxen, and Sharron L. Marxen, husband and wife.

Kathleen Baumhofer
 Notary Public, Anoka County, Minnesota
 My Commission Expires Sept. 30, 1983

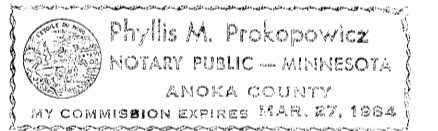
I, Ron Murphy, hereby certify that I have surveyed and platted the land described in the dedication of this plat as MARXEN TERRACE SECOND ADDITION, that this plat is a correct representation of said survey, that all distances are correctly shown on said plat in figures denoting feet and hundredths of a foot, that the monuments for the guidance of future surveys have been correctly placed in the ground as shown on said plat, that there are no wet lands or public highways to be designated on said plat other than as shown thereon, and that the outside boundary lines are correctly designated on this plat.

Ron Murphy
 Ron Murphy, Registered Land Surveyor
 Minnesota Registration No. 10832

State of Minnesota)
 County of Anoka)

The Surveyor's certificate was subscribed and sworn to before me, a Notary Public, this 10th day of August, 1977.

Phyllis M. Prokopowicz
 Notary Public, Anoka County, Minnesota
 My Commission Expires March 27, 1984



We hereby certify that the City Council of the City of Fridley, Anoka County, Minnesota, duly accepted and approved the annexed plat of MARXEN TERRACE SECOND ADDITION, at a regular meeting thereof held this 6th day of June, 1977.

William J. Nee
 Mayor
Marcus Brunzell
 Clerk

Checked and approved this 22nd day of August, 1977.

Robert W. Anderson
 Anoka County Surveyor

"NO DELINQUENT TAXES AND TRANSFER ENTERED"

Aug 22 1977
Charles R. Leifeling
 Auditor, Anoka County
D. K. O'Brien
 Deputy

475236
 OFFICE OF COUNTY RECORDER
 STATE OF MINNESOTA, COUNTY OF ANOKA
 I hereby certify that the within instrument was filed in this office for record on the AUG 23 1977 A.D., 1977 at 9 o'clock A.M., and was duly recorded in book 24 of Plans page 2

Del J. Amundson
 County Recorder
V. F. Hollenhorst
 Deputy

