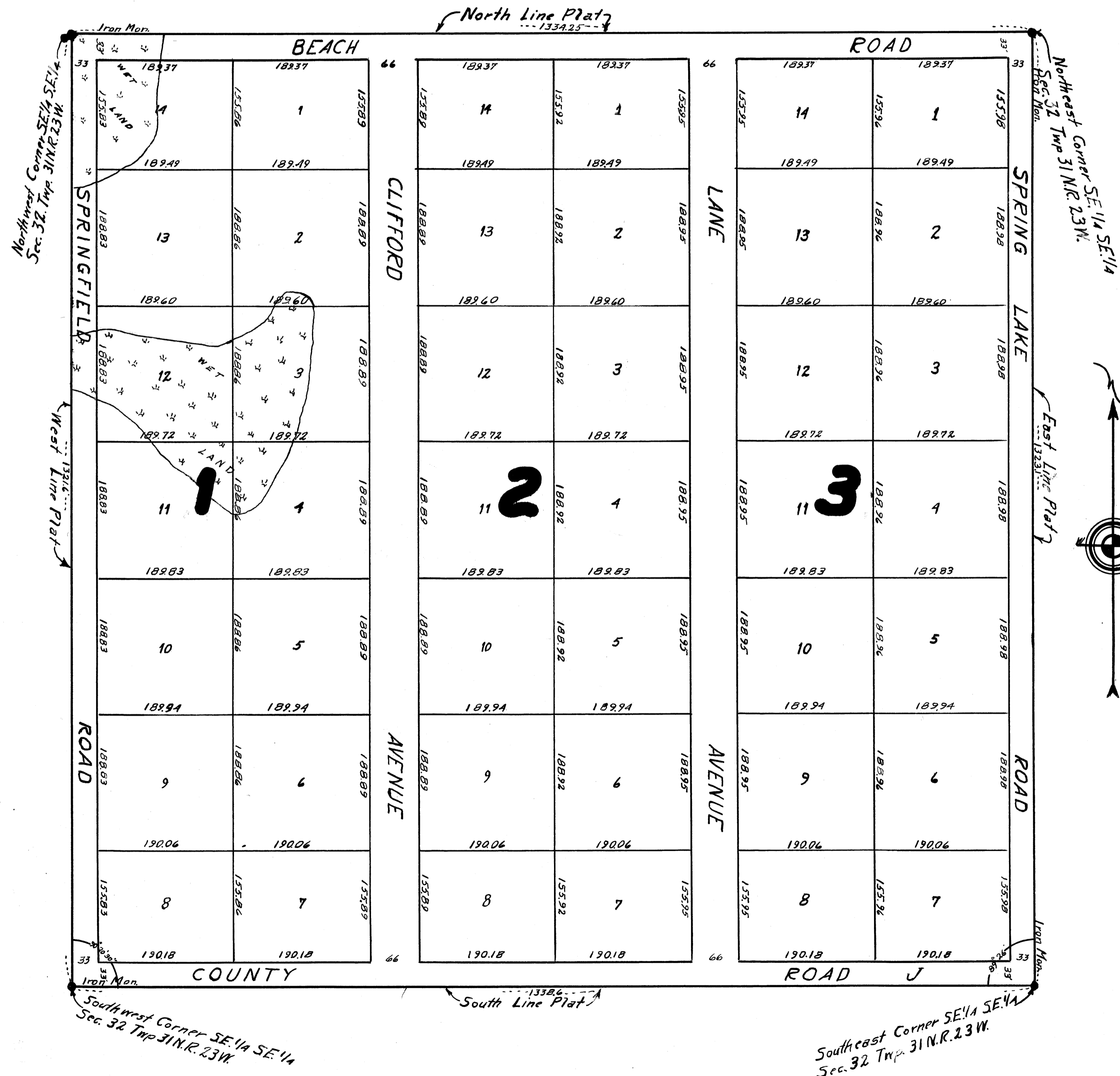


MARY ELISABETH ADDITION TO LADDIE LAKE

ANOKA COUNTY, MINNESOTA

Scale: One Inch = 100 Feet

102357
OFFICE OF REGISTER OF DEEDS,
STATE OF MINNESOTA, COUNTY OF ANOKA
I hereby certify that the within instrument was filed in this office for record on the 21 day of August, A. D. 1941, at 2 o'clock P. M., and was duly recorded in book 2 of Deeds, page 2.
Edw. Brundage
Register of Deeds



KNOW ALL MEN BY THESE PRESENTS That we, Carl A. Widmark and Sophy Widmark, his wife, owners and proprietors of the following described property to wit: the Southeast one fourth of the Southeast one fourth (SE 1/4 SE 1/4) of Section Thirty two (32) Township Thirty one North (T. 31 N.) Range Twenty three west (R. 23 W.) of the fourth Principal Meridian (4th P.M.) Anoka County, Minnesota have caused the same to be Surveyed and Platted as 'Mary Elizabeth Addition to Laddie Lake, Anoka County, Minnesota' and do hereby donate and dedicate to the Public use forever all Avenues and Roads as shown on the annexed Plat. In witness whereof we have hereunto set our hands and Seals on this 21 day of July 1941 A.D.
Witness Edw. Brundage Signed Carl A. Widmark
Witness Alice G. Doyle Signed Sophy Widmark

STATE OF MINNESOTA }
COUNTY OF ANOKA } ss.
On this 21 day of July 1941 A.D. before me, a Notary Public, within and for said County of Anoka, State of Minnesota, personally appeared Carl A. Widmark and Sophy Widmark, his wife, to me personally known to be the persons described in and who executed the foregoing instrument and they acknowledge and affirm that they executed the same as their own free act and deed.
Notary Public, Anoka County, Minnesota Edw. Brundage
My Commission expires Aug - 19 - 1943 GEO. W. GREEN, Notary Public, Anoka County, Minn. My Commission Expires August 10, 1943

I hereby certify that I have Surveyed and Platted the property described in the dedication on this sheet as 'Mary Elizabeth Addition to Laddie Lake, Anoka County, Minnesota'; That this Plat is a correct representation of said Survey; That all distances are correctly shown on the Plat in figures denoting feet and decimals of a foot; That the Monuments for the guidance of future Surveys have been correctly placed in the ground as shown on the Plat; That the outside boundaries of the land are correctly designated on the Plat; That the topography of the Land is correctly shown on the Plat and that there are no wet lands or Public Highways to be designated on said Plat other than is thereon shown.
Registered Land Surveyor. Minnesota Number 1983
Signed Harvey G. Cartwright

STATE OF MINNESOTA }
COUNTY OF ANOKA } ss.
Above certificate subscribed and sworn to before me, a Notary Public in and for said County and State, on this 14 day of July 1941 A.D.
Notary Public, Anoka County, Minnesota Leeds H. Cutler LEEDS H. CUTLER, Notary Public, Anoka County, Minnesota. My Commission Expires April 26, 1944

This Plat was approved and accepted by the Honorable Board of County Commissioners, Anoka County, Minnesota, at a regular meeting held this 14 day of July 1941 A.D.
Chairman Board of County Commissioners Carroll Broadbent
County Auditor Ed. Carlson deputy
by Dwain Sam deputy

TAXES PAID
This Plat day of Aug 1941
Ed. Carlson
Auditor Anoka County, Minn.
by Dwain Sam Deputy
Wallis D. Bowers
July 31, 1941
Edw. Brundage
Carl A. Widmark