

Official Plat

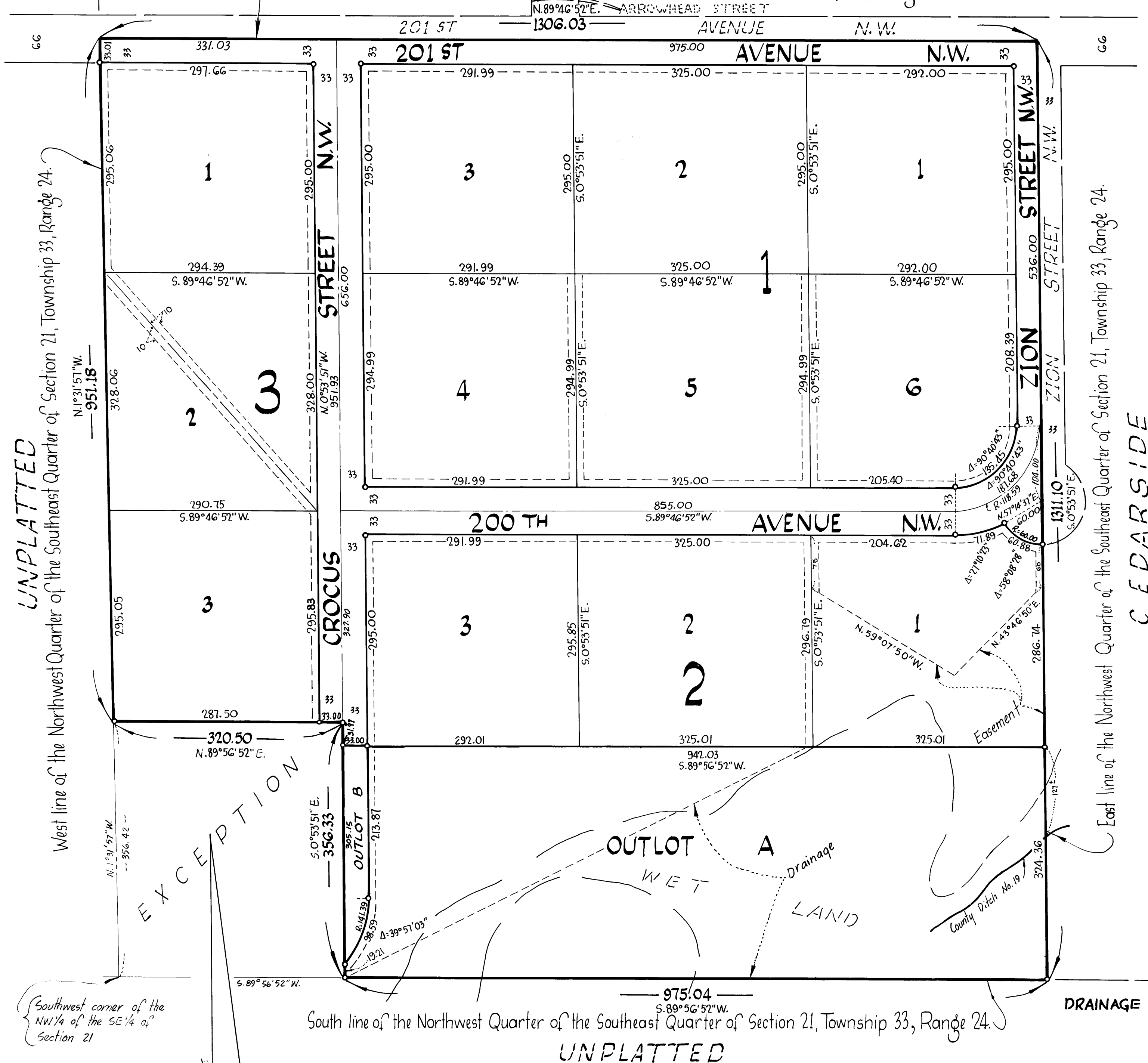
MAXI'S ESTATES 1ST ADDITION

OAK GROVE TOWNSHIP ANOKA COUNTY

ADDITION

BEAUDRY'S

North line of the Northwest Quarter of the Southeast Quarter of Section 21, Township 33, Range 24.



KNOW ALL MEN BY THESE PRESENTS: That George R. Pritchard and Josephine Pritchard, his wife, owners and proprietors of the following described property situated in the County of Anoka, State of Minnesota, to wit:

The Northwest Quarter of the Southeast Quarter of Section 21, Township 33, Range 24, except that part described as follows: Beginning at the southwest corner of said Northwest Quarter of Southeast Quarter; thence on an assumed bearing of N 1°31'57" W, along the west line of said Northwest Quarter of Southeast Quarter, 356.42 feet; thence N 89°56'52" E, parallel with the south line of said Northwest Quarter of Southeast Quarter, 320.50 feet; thence S 0°53'51" E, parallel with the east line of said Northwest Quarter of Southeast Quarter, 356.33 feet to the said south line; thence S 89°56'52" W, along said south line, to the point of beginning;

have caused the same to be surveyed and platted as MAXI'S ESTATES 1ST ADDITION and do hereby donate and dedicate to the public for public use forever the Avenues, Streets and drainage and utility easements as shown on this plat. In witness whereof said George R. Pritchard and Josephine Pritchard, his wife, have hereunto set their hands this 13 day of July, 1978.

Signed by:
 George R. Pritchard
 Josephine Pritchard

STATE OF MINNESOTA The foregoing instrument was acknowledged before me this 13 day of July, 1978 by George R. Pritchard and Josephine Pritchard, his wife.

WALTER ZUBRZYCKI
 ANOKA COUNTY
 NOTARY PUBLIC - MINNESOTA
 MY COMMISSION EXPIRES AUG. 2, 1982
 My Commission Expires 8-2-82

I hereby certify that I have surveyed and platted the property described on this plat as MAXI'S ESTATES 1ST ADDITION; that this plat is a correct representation of said survey; that all distances are correctly shown on the plat in feet and hundredths of a foot; that all monuments have been correctly placed in the ground as shown on said plat; that the outside boundary lines are correctly designated on said plat, and that there are no wet lands or highways to be designated on said plat, other than shown thereon.

Howard W. Rogers, Land Surveyor
 Minnesota Registration No. 10945

STATE OF MINNESOTA The foregoing instrument was acknowledged before me this 13th day of July, 1978 by Howard W. Rogers, Land Surveyor.

Marietta L. Zuehlke
 ANOKA COUNTY
 NOTARY PUBLIC - MINNESOTA
 MY COMMISSION EXPIRES APR. 14, 1984
 My Commission Expires

We the Chairman and Secretary of the Township Board of the Township of Oak Grove, Anoka County, Minnesota do hereby certify that on this 31 day of July, 1978 said Township Board duly approved the plat of MAXI'S ESTATES 1ST ADDITION and authorized certification of such action of the Board by its Chairman and Secretary.

TOWN BOARD OF THE TOWNSHIP OF OAK GROVE, MINNESOTA
 David O. Moen, Chairman
 Marietta L. Zuehlke, Secretary

Checked and approved this 8th day of August, 1978.

Roland W. Anderson
 Anoka County Surveyor

This plat was approved and accepted by the Board of County Commissioners of the County of Anoka, State of Minnesota at a regular meeting thereof held this 8th day of August, 1978.

By: Robert C. Pritchard, Chairman
 By: Ruth M. McAndrew, Executive Secretary

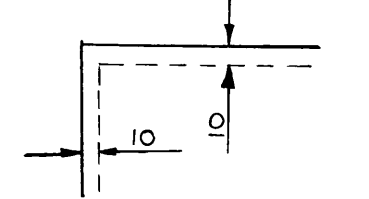
Recommended for approval this 8th day of August, 1978.

By: Lane K. Kruel
 County Highway Engineer
 Anoka County, Minnesota

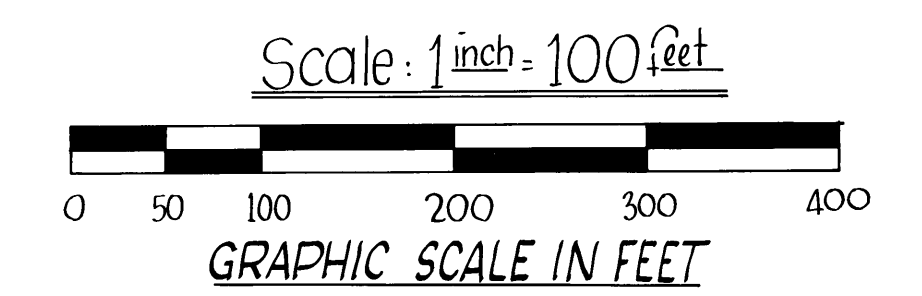
This plat was approved as to form and execution on this 8th day of August, 1978.

By: Robert W. Johnson
 County Attorney
 Anoka County, Minnesota

DRAINAGE AND UTILITY EASEMENTS ARE SHOWN THUS:



Being 10 feet in width and parallel with adjoining lot lines, unless otherwise indicated on the plat.



MARCH, 1978

SUBURBAN ENGINEERING, INC.
 -Engineers-
 -Surveyors-

504027
 OFFICE OF COUNTY RECORDER
 STATE OF MINNESOTA, COUNTY OF ANOKA
 I hereby certify that the within instrument was filed in this office for record on the AUG 8 1978 A.D., 19:40'clock P.M., and was duly recorded in book 28 of Plat page 6
 Ted J. Campbell
 County Recorder
 By: V.P. Hallstrom
 Deputy

"NO DELINQUENT TAXES AND TRANSFER ENTERED"
 Aug 24 1978
 Charles E. Johnson
 Auditor, Anoka County
 BY: J.R. Kaminski
 Deputy