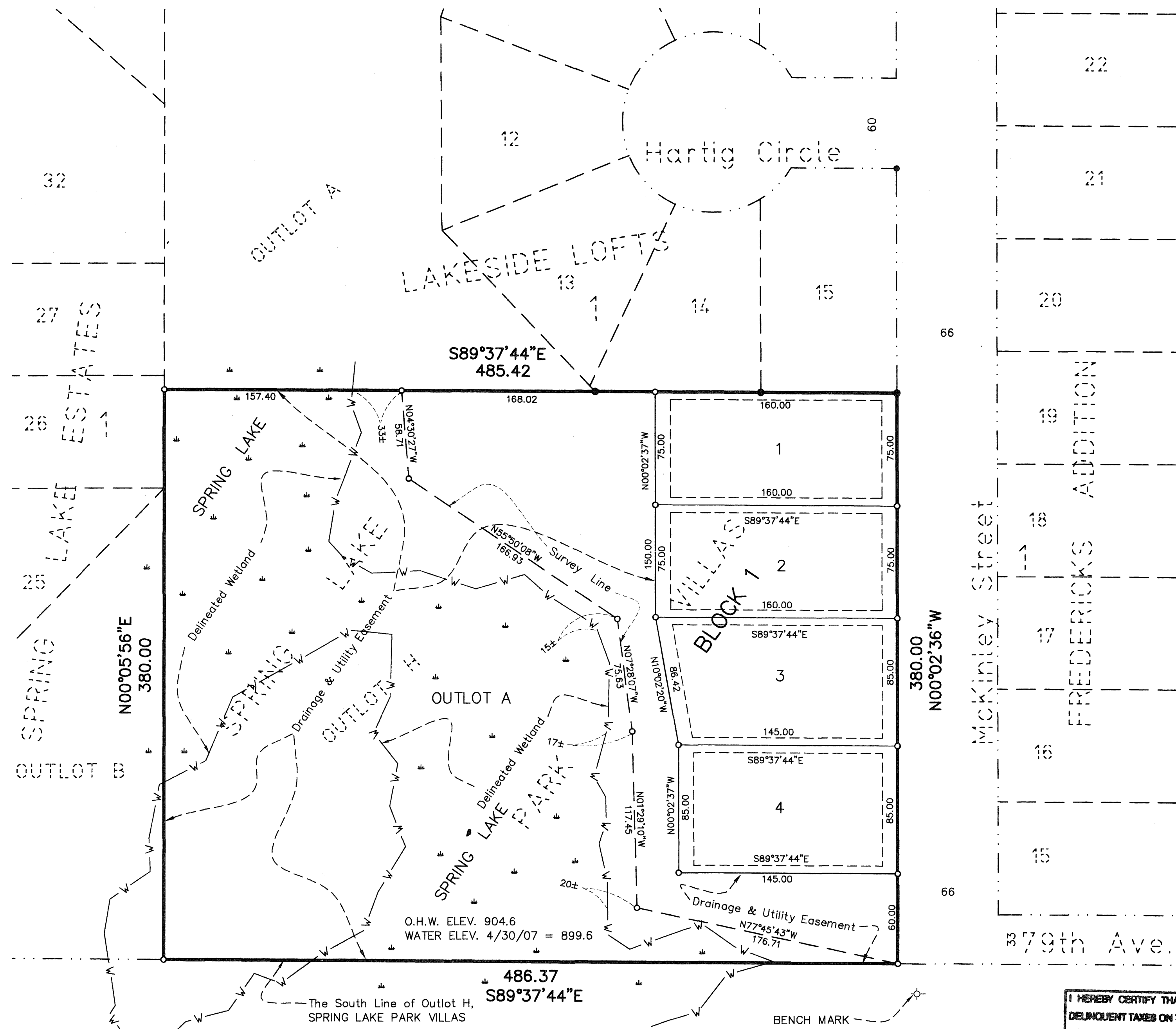


MCKINLEY MANOR ADDITION

Spring Lake Park
Anoka County
Sec. 1, T. 30, R. 24
Book 21 TORNS pg 40



KNOW ALL PERSONS BY THESE PRESENTS: That the City of Spring Lake Park, a Minnesota municipal corporation, fee owner, of the following described property situated in the County of Anoka, State of Minnesota, to wit:

Outlot H, SPRING LAKE PARK VILLAS, Anoka County, Minnesota.

Has caused the same to be surveyed and platted as MCKINLEY MANOR ADDITION, and does hereby dedicate to the public for public use forever the easements as shown on this plat for drainage and utility purposes only.

In witness whereof said City of Spring Lake Park, a Minnesota municipal corporation, has caused these presents to be signed by its proper officers this 15th day of October, 2007.

CITY OF SPRING LAKE PARK

Robert Nelson
Robert Nelson, as Mayor

Barbara Nelson
Barbara Nelson, as Clerk

STATE OF MINNESOTA
COUNTY OF ANOKA

The foregoing instrument was acknowledged before me this 15th day of October, 2007 by Robert Nelson, as Mayor, and Barbara Nelson, as Clerk, of the City of Spring Lake Park, a Minnesota municipal corporation, on behalf of the corporation.

Karen A. Sorensen
(Signature)

KAREN A. SORENSEN
(Name Printed) Notary Public, Minnesota
My Commission Expires January 31, 2010.

I hereby certify that I have surveyed and platted or directly supervised the surveying and platting of the land described on this plat as MCKINLEY MANOR ADDITION; that this plat is a correct representation of the boundary survey; all mathematical data and labels are correctly designated; all monuments depicted on the plat have been or will be correctly set within one year; all water boundaries and wet lands as of this date, as defined in Minnesota Statutes 505.01, Subd. 3, are shown and labeled; and all public ways are shown and labeled.

Stephen Douglas
Stephen Douglas, Licensed Land Surveyor
Minnesota License Number 41587

STATE OF MINNESOTA
COUNTY OF RAMSEY

The foregoing instrument was acknowledged before me this 1st day of November, 2007 by Stephen Douglas, Licensed Land Surveyor, Minnesota License Number 41587.

Patricia J. Wegener
Patricia J. Wegener, Notary Public, Minnesota
My Commission Expires January 31, 2010.

I HEREBY CERTIFY THAT THE CURRENT AND DELINQUENT TAXES ON THE LANDS DESCRIBED WITHIN ARE PAID AND THE TRANSFER IS ENTERED October 25, 2012
Terry W. Dalen
PROPERTY TAX ADMINISTRATOR
BY SK
DEPUTY

CITY COUNCIL OF SPRING LAKE PARK

The foregoing plat of MCKINLEY MANOR ADDITION was approved and accepted by the City Council of Spring Lake Park, Minnesota, at a regular meeting thereof held this 14th day of August, 2008. If applicable, the written comments and recommendations of the Commissioner of Transportation and County Highway Engineer have been received by the City or the prescribed 30 day period has elapsed without receipt of such comments and recommendations, as provided by Minnesota Statutes, Section 505.03, Subd. 2.

By Robert Nelson, Mayor By Barbara Nelson, Clerk

Checked and Approved this 14th day of August, 2008.

Larry D. Stein
Anoka County Surveyor

\$56.00

511376.002

AUDITOR'S SUBDIVISION NO. 152

Office of RECORDER/REGISTRAR
OF TITLES

STATE OF MINNESOTA COUNTY OF ANOKA

I hereby certify that the within instrument was filed in

this office for record on the 30th day of

October, 2012 at 12:00 o'clock P.M.

and was duly recorded in book 21 TORNS

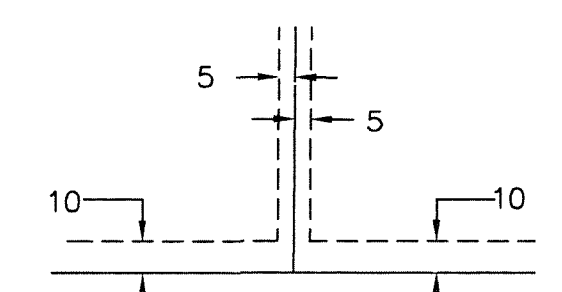
page 40

Terry W. Dalen
Recorder/Registrar of Titles

By SK
Deputy

- o Denotes 1/2 inch by 14 inch iron monument set and marked by License No. 41587
 - Denotes iron monument found
- For the purposes of this plat the south line of Outlot H, SPRING LAKE PARK VILLAS, is assumed to bear S 89°37'44" E.
- Bench Mark: Top Nut Hydrant at S.W. corner of 79th Avenue and McKinley Street Elev. 909.97 N.G.V.D. 1929

DRAINAGE AND UTILITY EASEMENTS ARE SHOWN THUS: (NOT TO SCALE)



BEING 10 FEET IN WIDTH AND ADJOINING STREET AND REAR LOT LINES AND 5 FEET IN WIDTH AND ADJOINING LOT LINES UNLESS OTHERWISE SHOWN ON THE PLAT.

GRAPHIC SCALE



(IN FEET)
1 inch = 50 ft.