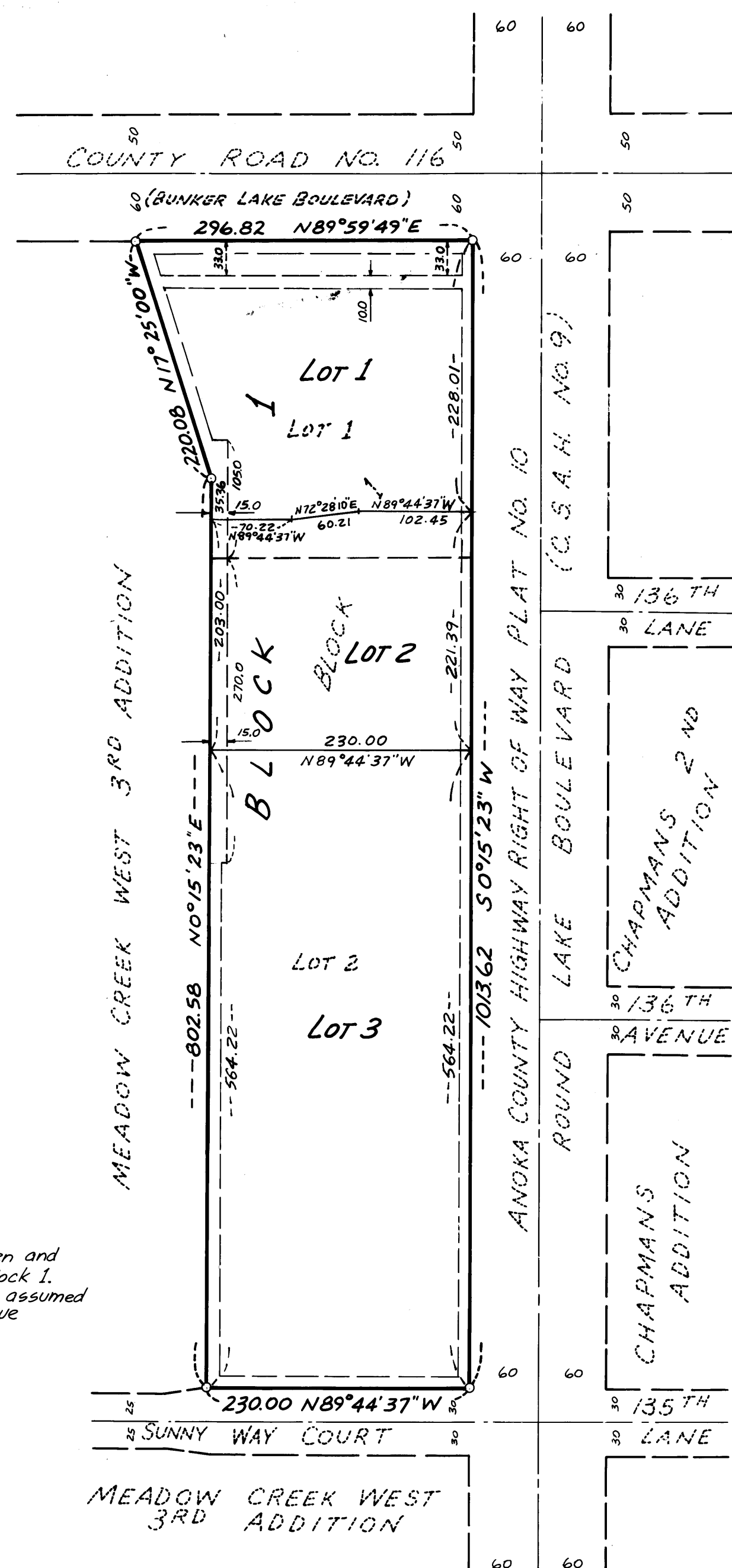
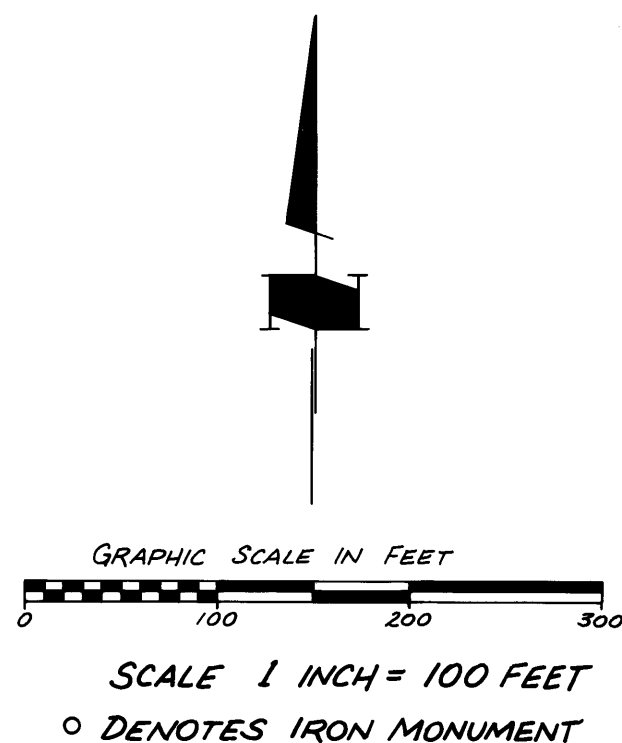


MEADOW CREEK WEST 5TH ADDITION

CITY OF ANOKA
COUNTY OF ANOKA



Note:
A solar observation was taken and related to the west line of Block 1. The west line of Block 1 has an assumed bearing of $N0^{\circ}15'23\"/>$



Drainage and Utility Easements are shown thus: being 10.0 feet in width unless shown otherwise

674973

OFFICE OF COUNTY RECORDER
STATE OF MINNESOTA, COUNTY OF ANOKA
I hereby certify that the within instrument was filed in this office for record on the MAY 29 1985 A.D., 1985
12:05 o'clock P.M. and was duly recorded in Book 350 F. PAGES 7
Ed B. Chundak
County Recorder
974 Hollingsworth

KNOW ALL MEN BY THESE PRESENTS: That Boulevard Mall Partnership, a general partnership, owner and proprietor of the following described property situated in the County of Anoka, State of Minnesota, to wit:

Lot 1 and 2, Block 1, MEADOW CREEK WEST 4TH ADDITION, according to said plat on file and of record in the office of the County Recorder, Anoka County, Minnesota.

Has caused these presents to be surveyed and platted as MEADOW CREEK WEST 5TH ADDITION and do hereby donate and dedicate to the public for public use forever the drainage and utility easements as shown on the plat.

In witness whereof said Boulevard Mall Partnership, a general partnership, has caused these presents to be signed by its partners this 29th day of May, 1985.

BOULEVARD MALL PARTNERSHIP
James D. Hutton, Partner
James D. Hutton
Leslie J. Rowe, Partner
Leslie J. Rowe

STATE OF MINNESOTA
COUNTY OF ANOKA

The foregoing instrument was acknowledged before me this 29th day of May, 1985 by James D. Hutton, Partner, and Leslie J. Rowe, Partner, of Boulevard Mall Partnership, on behalf of the partnership.

MERLYN D. ANDERSON
NOTARY PUBLIC - MINNESOTA
ANOKA COUNTY
My Commission Expires Aug. 22, 1986

M. D. Anderson
Notary Public, Anoka County, Minnesota
My Commission Expires Aug. 22, 1986

I hereby certify that I have surveyed the property described on this plat as MEADOW CREEK WEST 5TH ADDITION, that this plat is a correct representation of said survey; that all distances are shown in feet and hundredths of a foot; and that all monuments have been correctly placed in the ground as shown; that the boundary lines are correctly designated; that there are no wetlands.

Leonard Pilarski
Leonard Pilarski, Land Surveyor, Minnesota Registration No. 15479

STATE OF MINNESOTA
COUNTY OF ANOKA

The foregoing instrument was acknowledged before me this 21st day of May, 1985 by Leonard Pilarski, Land Surveyor.

James J. O'Brien
Notary Public - Minnesota
Anoka County
My Commission Expires May 7, 1984

James J. O'Brien
Notary Public, Anoka County, Minnesota
My Commission Expires May 7, 1984

ANOKA, MINNESOTA

This plat of MEADOW CREEK WEST 5TH ADDITION was approved and accepted by the City Council of the City of Anoka, Minnesota, at a regular meeting thereof held this 22nd day of April, 1985.

CITY COUNCIL OF ANOKA, MINNESOTA
By Lorraine Gustafson, Mayor
By Joseph M. Alvar, Clerk

Checked and approved this 29th day of May, 1985.

Roland W. Anderson
County Surveyor, Anoka County, Minnesota

This plat of MEADOW CREEK WEST 5TH ADDITION was approved by the Planning Commission of the City of Anoka, Minnesota this 2nd day of April, 1985.

Gerald M. Cotton, Chairman
Attest Robert Kincler, Secretary

"NO DELINQUENT TAXES AND TRANSFER ENTERED"

I HEREBY CERTIFY THAT THE TAXES PAYABLE IN THE YEAR 1985 ON THE LANDS DESCRIBED WITHIN ARE PAID
Charles R. Edberg
Auditor, Anoka County
Raymond G. Hunt
Deputy

PREPARED BY:
 CONSULTING ENGINEERS DIVERSIFIED INC.