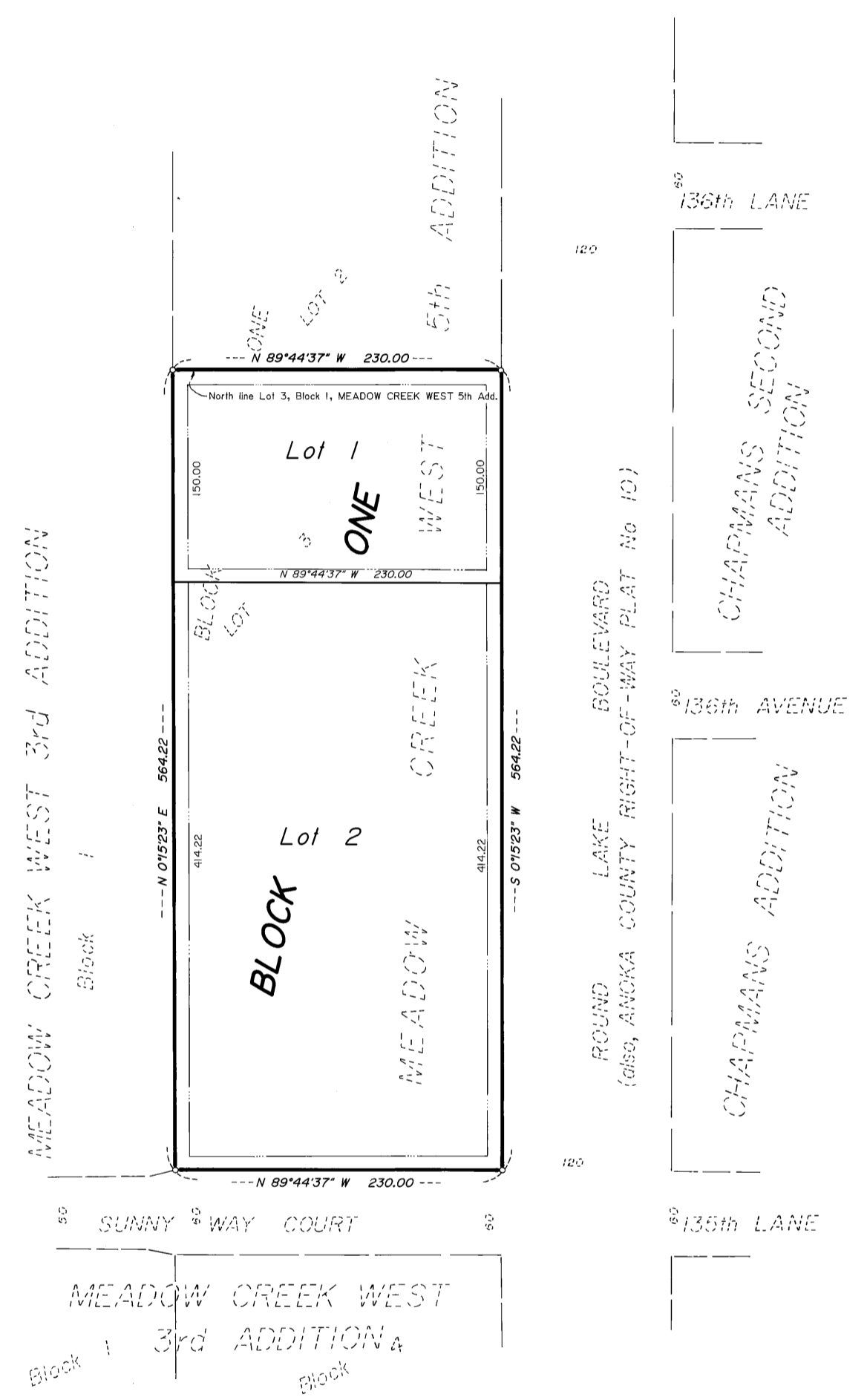


# MEADOW CREEK WEST 6TH ADDITION

City of Anoka  
Anoka County, Mn.



KNOW ALL MEN BY THESE PRESENTS: That Boulevard Mall Partnership, a partnership under the laws of the State of Minnesota, fee owner of the following described property situated in said State of Minnesota, County of Anoka, to-wit:

Lot 3, Block 1, MEADOW CREEK WEST 5TH ADDITION.

Have caused the same to be surveyed and platted as MEADOW CREEK WEST 6TH ADDITION, and do hereby donate and dedicate to the public for the public use forever the easements as shown on this plat for drainage and utility purposes only. In witness whereof said Boulevard Mall Partnership has caused these presents to be signed by its Partners this 7<sup>th</sup> day of January, 1987.

BOULEVARD MALL PARTNERSHIP

Leslie J. Rowe, Leslie J. Rowe James D. Hutton, James D. Hutton  
Partner Partner

State of Minnesota, County of ANOKA

The foregoing instrument was acknowledged before me this 7<sup>th</sup> day of JANUARY, 1987, by Leslie J. Rowe and James D. Hutton, partners, on behalf of Boulevard Mall Partnership, a Minnesota Partnership.

Robert H. Brass Notary Public, ANOKA County, Minnesota  
My commission expires: DEC. 19, 1989

I hereby certify that I have surveyed and platted the property described in this plat as MEADOW CREEK WEST 6TH ADDITION and that this plat is a correct representation of said survey; that all monuments have been correctly placed in the ground as shown on the plat; that all distances are correctly shown on the plat in feet and hundredths of a foot; that the outside boundary lines are correctly designated on the plat; and that there are no wet lands or public highways to be designated on the plat other than as shown thereon.

Lynn P. Caswell  
Lynn P. Caswell, Land Surveyor  
Minnesota Registration No. 13057

State of Minnesota, County of Anoka

The foregoing instrument was acknowledged before me this 30<sup>th</sup> day of Jan., 1987, by Lynn P. Caswell, Land Surveyor.

M. D. Anderson Notary Public, Anoka County, Minnesota  
My commission expires: Aug 22, 1987

Annexed plat of MEADOW CREEK WEST 6TH ADDITION was approved by the Planning Commission of the City of Anoka, Minnesota this 2nd day of December, 1986.

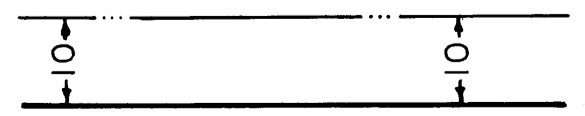
By: Gerald M. Cotton, Chairman

Annexed plat of MEADOW CREEK WEST 6TH ADDITION was approved by the City Council of Anoka, Minnesota at a regular meeting thereof held this 15<sup>th</sup> day of December, 1986. If applicable, the written comments and recommendations of the Commissioner of Transportation and the County Highway Engineer have been received by the City or the prescribed 30 day period has elapsed without receipt of such comments and recommendations, as provided by Minnesota Statutes Section 505.03, Subdivision 2.

By: John A. Mann, Mayor pro tem Attest: Janey D. Selger, Clerk

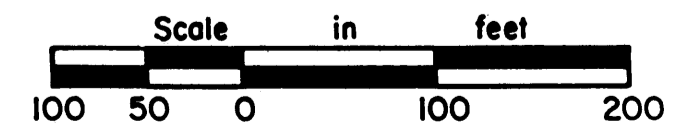
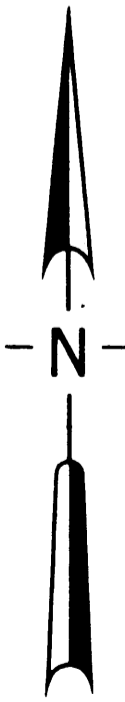
This plat has been checked and approved this 30<sup>th</sup> day of January, 1987.  
Robert W. Anderson, Anoka County Surveyor

Scale: 1 inch = 100 feet  
Bearings are based on an assumed datum.  
o Denotes iron pipe set with a plastic plug stamped RLS 8194.  
Drainage and Utility Easements are shown thus:



Note:  
A solar observation was taken and related to the west line of Block 1.  
The west line of Block 1 has an assumed bearing of N 0°15'23" E and a true bearing of N 0°30'17" E.

744590  
OFFICE OF COUNTY RECORDER  
STATE OF MINNESOTA, COUNTY OF ANOKA  
I hereby certify that the within instrument was filed in this office for record on the 7<sup>th</sup> A.D., 1987  
3:30 o'clock P.M., and was duly recorded in book 37 of Plats page 19  
Ted J. Randsahl  
County Recorder  
By: Doreta Kay Ege



"NO DELINQUENT TAXES AND TRANSFER ENTERED"  
January 30 1987  
Charles R. Johnson  
Auditor, Anoka County  
By: Quell M. Sawyer  
Deputy

HEREBY CERTIFY THAT THE TAXES PAYABLE IN THE YEAR 1987 ON THE LANDS DESCRIBED WERE PAID  
Donald C. Bailey  
Anoka County Treasurer  
J. Henry - Deputy

JOHN OLIVER & ASSOCIATES, INC.  
922 Main Street  
Elk River, Minnesota 55330  
(612) 441-2072  
Land Surveying  
Subdivision Design  
Site Planning