

# MEADOWS OF RICE CREEK 2ND ADDITION

CITY OF BLAINE  
COUNTY OF ANOKA

KNOW ALL PERSONS BY THESE PRESENTS: That Oakwood Land Development, Inc., a Minnesota corporation, fee owner, of the following described property situated in the County of Anoka, State of Minnesota, to wit:

Outlot B and Outlot H, of MEADOWS OF RICE CREEK, Anoka County, Minnesota.

Have caused the same to be surveyed and platted as MEADOWS OF RICE CREEK 2ND ADDITION and do hereby donate and dedicate to the public for public use forever the easements as shown on this plat for drainage and utility purposes only.

In witness whereof said Oakwood Land Development, Inc., a Minnesota corporation has caused these presents to be signed by its proper officer this 29<sup>th</sup> day of December, 1997.

OAKWOOD LAND DEVELOPMENT, INC.

*[Signature]*  
John R. Peterson, President

STATE OF MINNESOTA  
COUNTY OF ANOKA

The foregoing instrument was acknowledged before me this 29<sup>th</sup> day of December, 1997, by John R. Peterson, as President of Oakwood Land Development, Inc., a Minnesota corporation, on behalf of the corporation.

*[Signature]*  
Notary Public, Anoka County, Minnesota  
My Commission Expires January 31, 2000

Jan. 13 98  
*[Signature]*  
REGISTRAR

I hereby certify that I have surveyed and platted the property described on this plat as MEADOWS OF RICE CREEK 2ND ADDITION; that this plat is a correct representation of the survey; that all distances are correctly shown on the plat in feet and hundredths of a foot; that all monuments have been correctly placed in the ground as shown or will be correctly placed in the ground as designated on the plat; and that there are no wetlands as defined in Minnesota Statutes, Section 505.02, Subdivision 1 or public highways to be designated other than shown.

*[Signature]*  
Donald E. Sigety, Land Surveyor  
Minnesota License Number 23945

STATE OF MINNESOTA  
COUNTY OF ANOKA

The foregoing Surveyor's Certificate was acknowledged before me this 23<sup>rd</sup> day of December, 1997, by Donald E. Sigety, Land Surveyor, Minnesota Registration Number 23945.

*[Signature]*  
Notary Public, Anoka County, Minnesota  
My Commission Expires: January 31, 2000

BLAINE, MINNESOTA

This plat of MEADOWS OF RICE CREEK 2ND ADDITION was approved and accepted by the City Council of the City of Blaine, Minnesota, at a regular meeting thereof held this 16<sup>th</sup> day of October, 1997. If applicable, the written comments and recommendations of the Commissioner of Transportation and County Highway Engineer have been received by the City or the prescribed period has elapsed without receipt of such comments and recommendations as provided by Minnesota Statutes, Sections 505.03, Subdivision 2.

CITY COUNCIL (OF THE CITY OF BLAINE, MINNESOTA)

*[Signature]* Mayor  
*[Signature]* Clerk



ANOKA COUNTY SURVEYOR

This plat was checked and approved on this 13<sup>th</sup> day of JANUARY, 1998.

By MERYLN D. ANDERSON  
Meryln D. Anderson, Anoka County Surveyor  
by *[Signature]* deputy

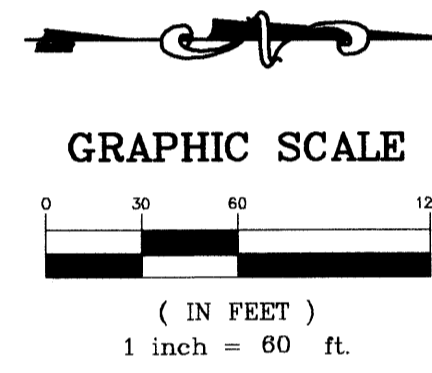
305901  
Office of REGISTRAR OF TITLES  
STATE OF MINNESOTA  
COUNTY OF ANOKA  
I hereby certify that the within instrument was filed in this office on JAN 13 1998 at 9:35 o'clock A. M.  
Edward M. Treska, Registrar of Titles  
By *[Signature]* Deputy Registrar of Titles

PASSE ENGINEERING, INC.  
REGISTERED PROFESSIONAL ENGINEERS  
LICENSED LAND SURVEYORS

# MEADOWS OF RICE CREEK 2ND ADDITION

CITY OF BLAINE  
COUNTY OF ANOKA

SPRING LAKE PARK WOODLAND  
56 57

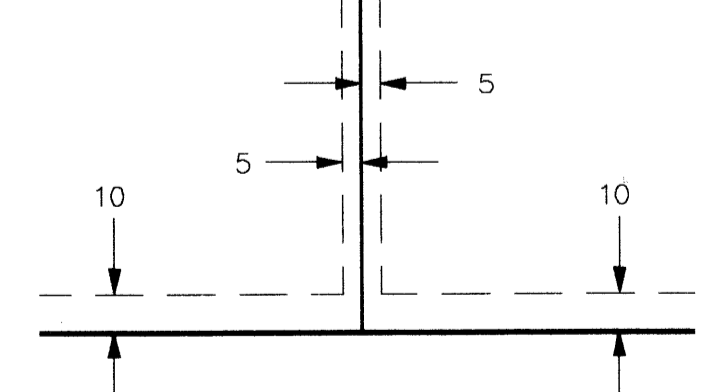


**BEARING NOTE:**  
FOR THE PURPOSES OF THIS PLAT, THE SOUTH LINE OF THE NORTH HALF OF THE SOUTHWEST QUARTER, SECTION 34, TOWNSHIP 31, RANGE 23, ANOKA COUNTY, MINNESOTA, IS ASSUMED TO BEAR NORTH 89°39'43" EAST.

- Denotes Anoka County Monument
- Denotes Set Capped 1/2 inch Iron Pipe R.L.S. No. 23945

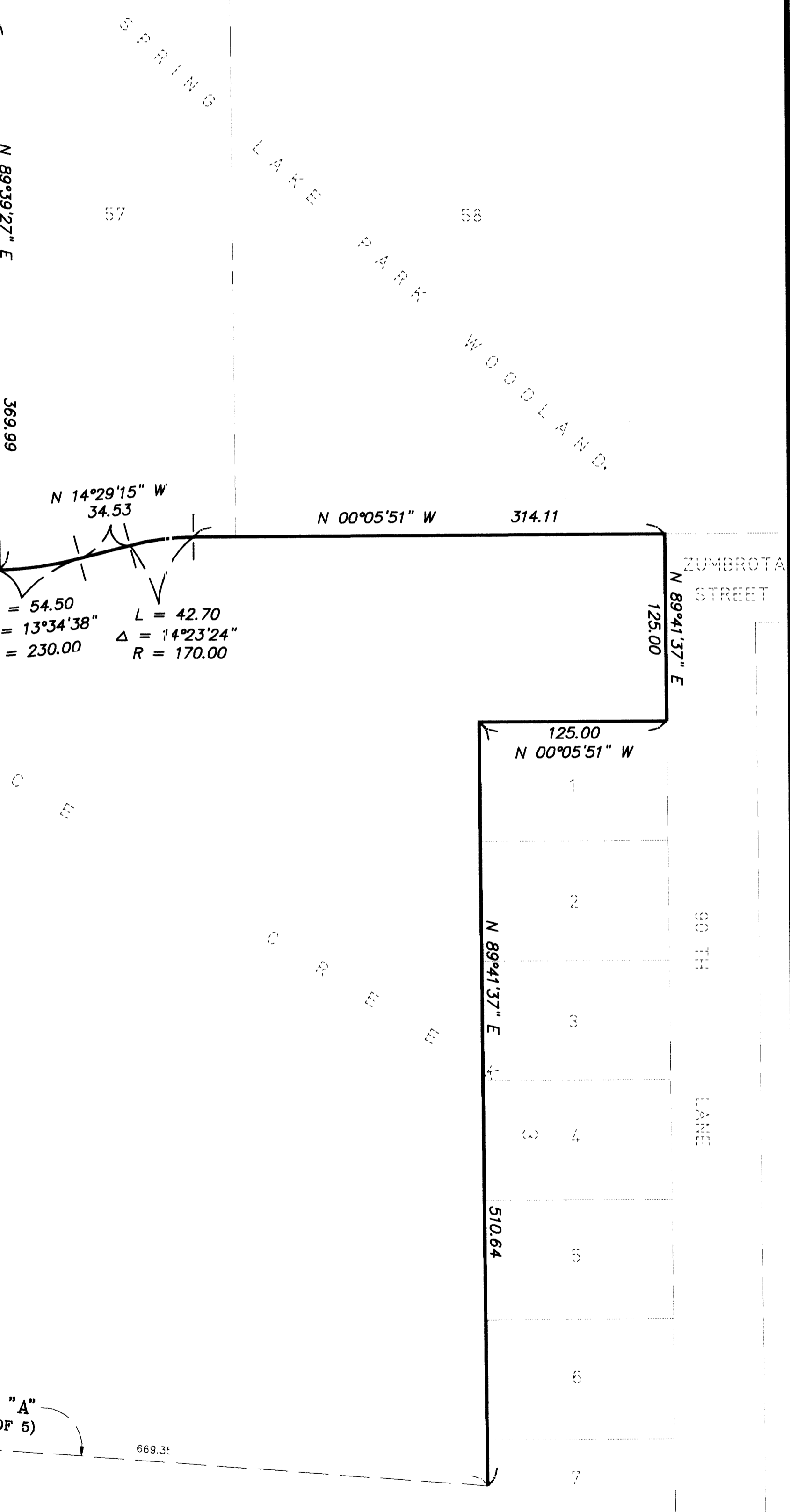
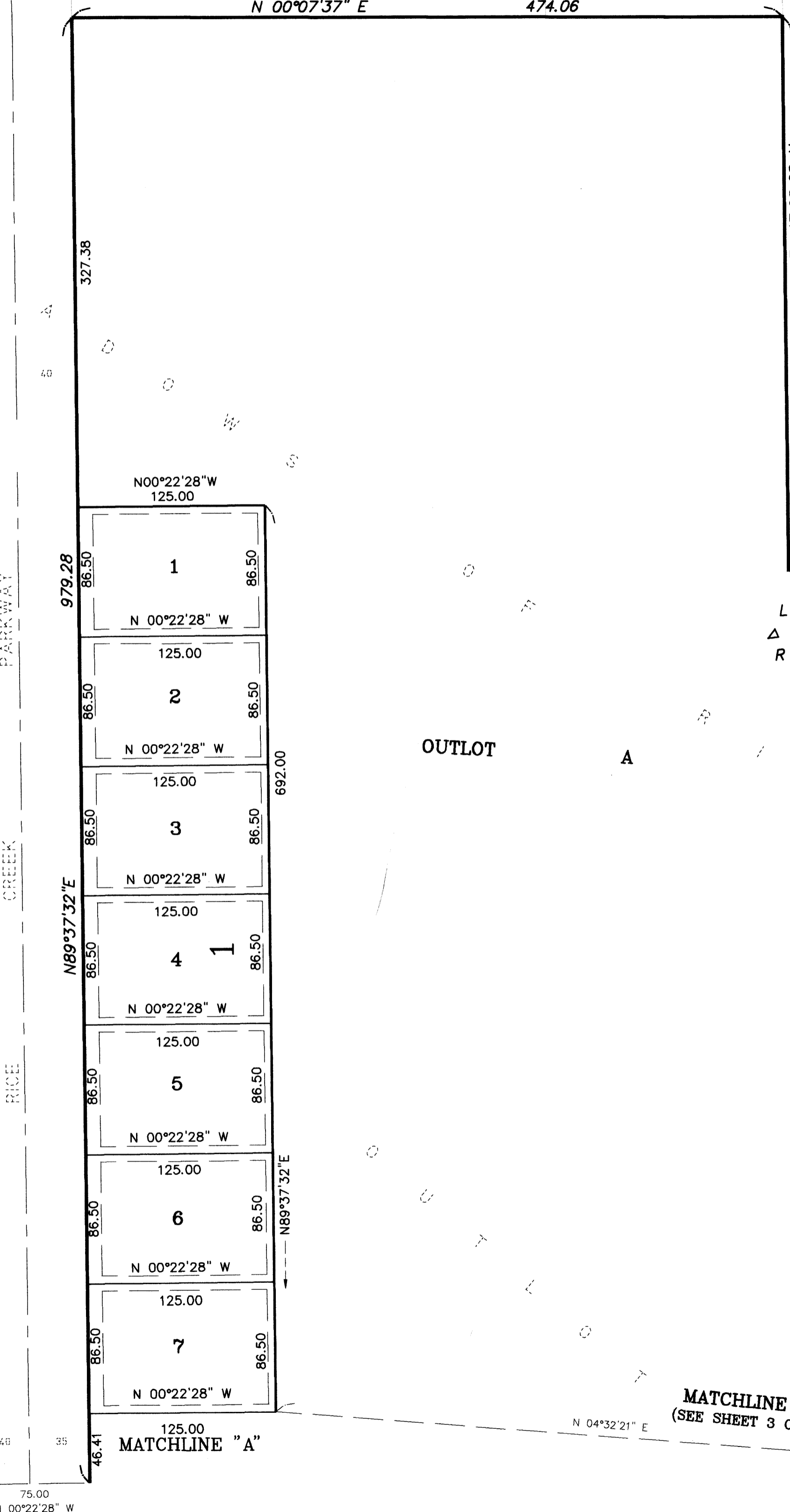
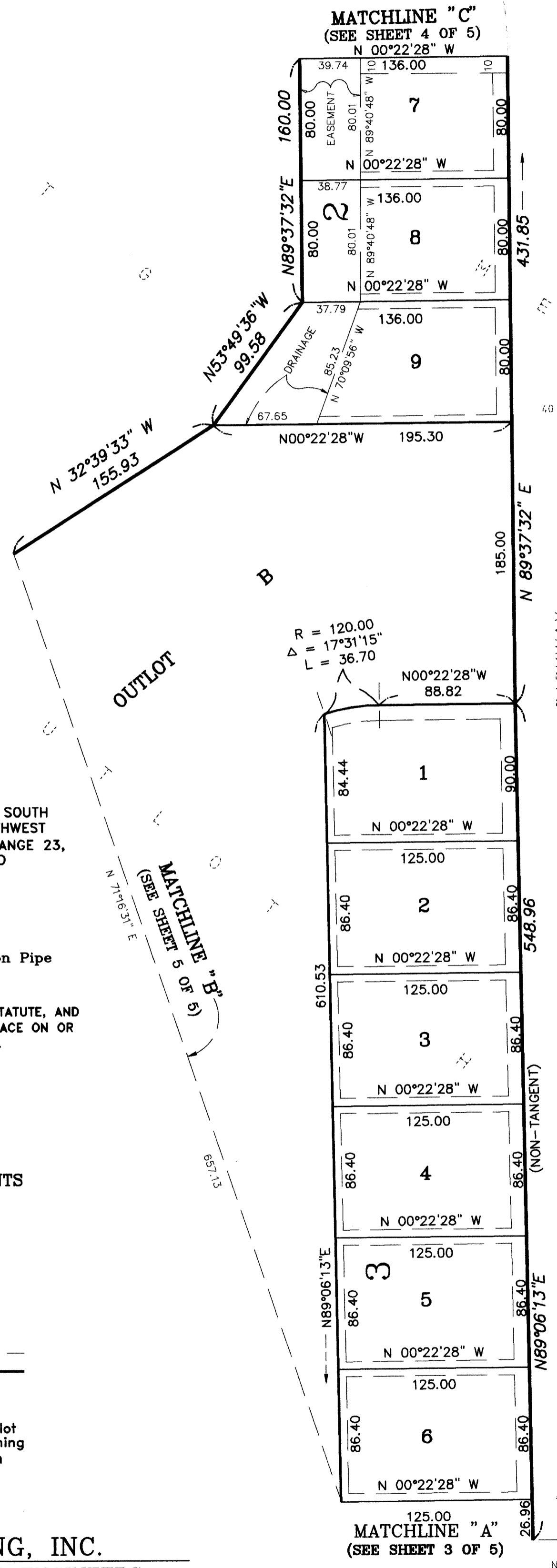
ALL MONUMENTS REQUIRED BY MINNESOTA STATUTE, AND NOT SHOWN ON THIS PLAT, SHALL BE IN PLACE ON OR BEFORE THE 25TH DAY OF DECEMBER, 1998.

**DRAINAGE AND UTILITY EASEMENTS ARE SHOWN THUS:**



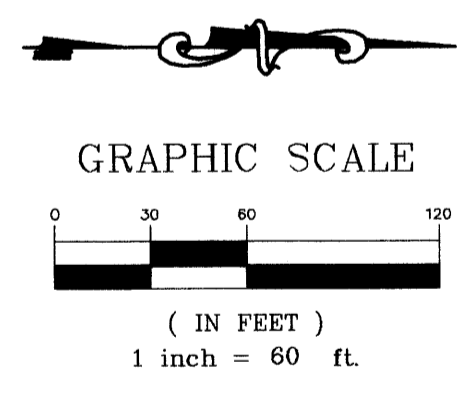
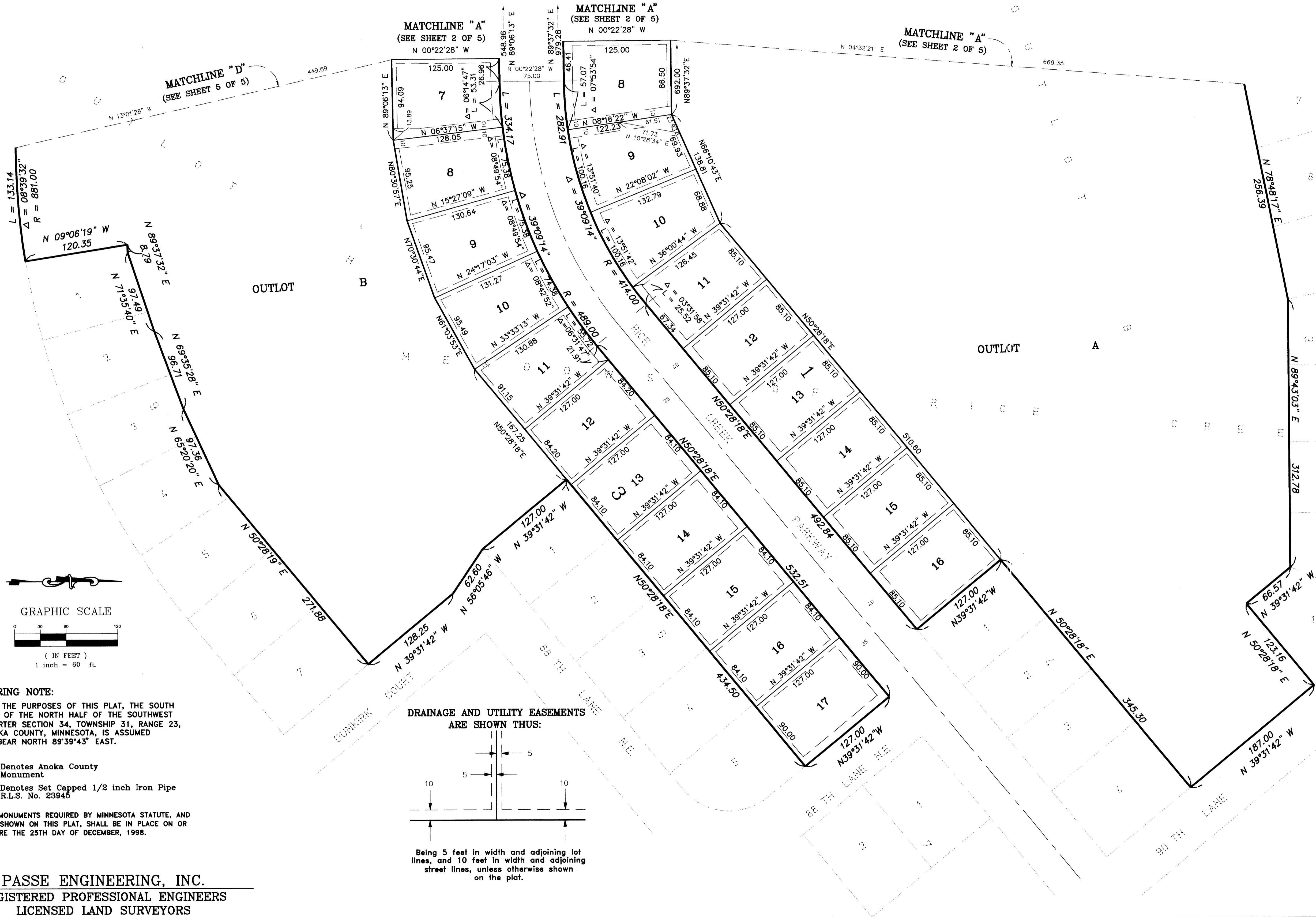
Being 5 feet in width and adjoining lot lines, and 10 feet in width and adjoining street lines, unless otherwise shown on the plat.

**PASSE ENGINEERING, INC.**  
REGISTERED PROFESSIONAL ENGINEERS  
LICENSED LAND SURVEYORS



# MEADOWS OF RICE CREEK 2ND ADDITION

CITY OF BLAINE  
COUNTY OF ANOKA

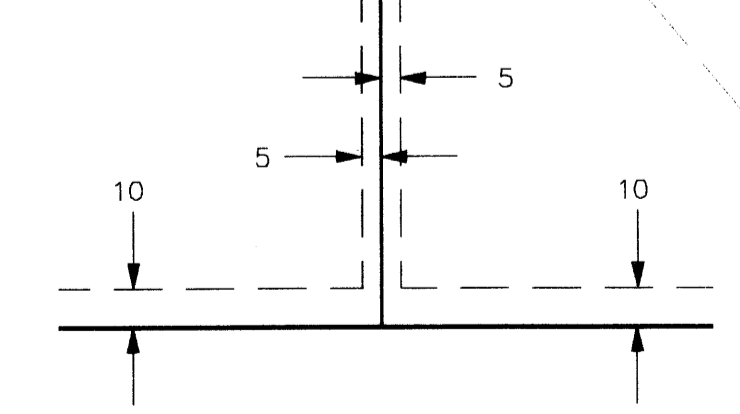


**BEARING NOTE:**  
FOR THE PURPOSES OF THIS PLAT, THE SOUTH LINE OF THE NORTH HALF OF THE SOUTHWEST QUARTER SECTION 34, TOWNSHIP 31, RANGE 23, ANOKA COUNTY, MINNESOTA, IS ASSUMED TO BEAR NORTH 89°39'43" EAST.

- Denotes Anoka County Monument
- Denotes Set Capped 1/2 inch Iron Pipe R.L.S. No. 23945

ALL MONUMENTS REQUIRED BY MINNESOTA STATUTE, AND NOT SHOWN ON THIS PLAT, SHALL BE IN PLACE ON OR BEFORE THE 25TH DAY OF DECEMBER, 1998.

**DRAINAGE AND UTILITY EASEMENTS ARE SHOWN THUS:**



Being 5 feet in width and adjoining lot lines, and 10 feet in width and adjoining street lines, unless otherwise shown on the plat.

**PASSE ENGINEERING, INC.**  
REGISTERED PROFESSIONAL ENGINEERS  
LICENSED LAND SURVEYORS

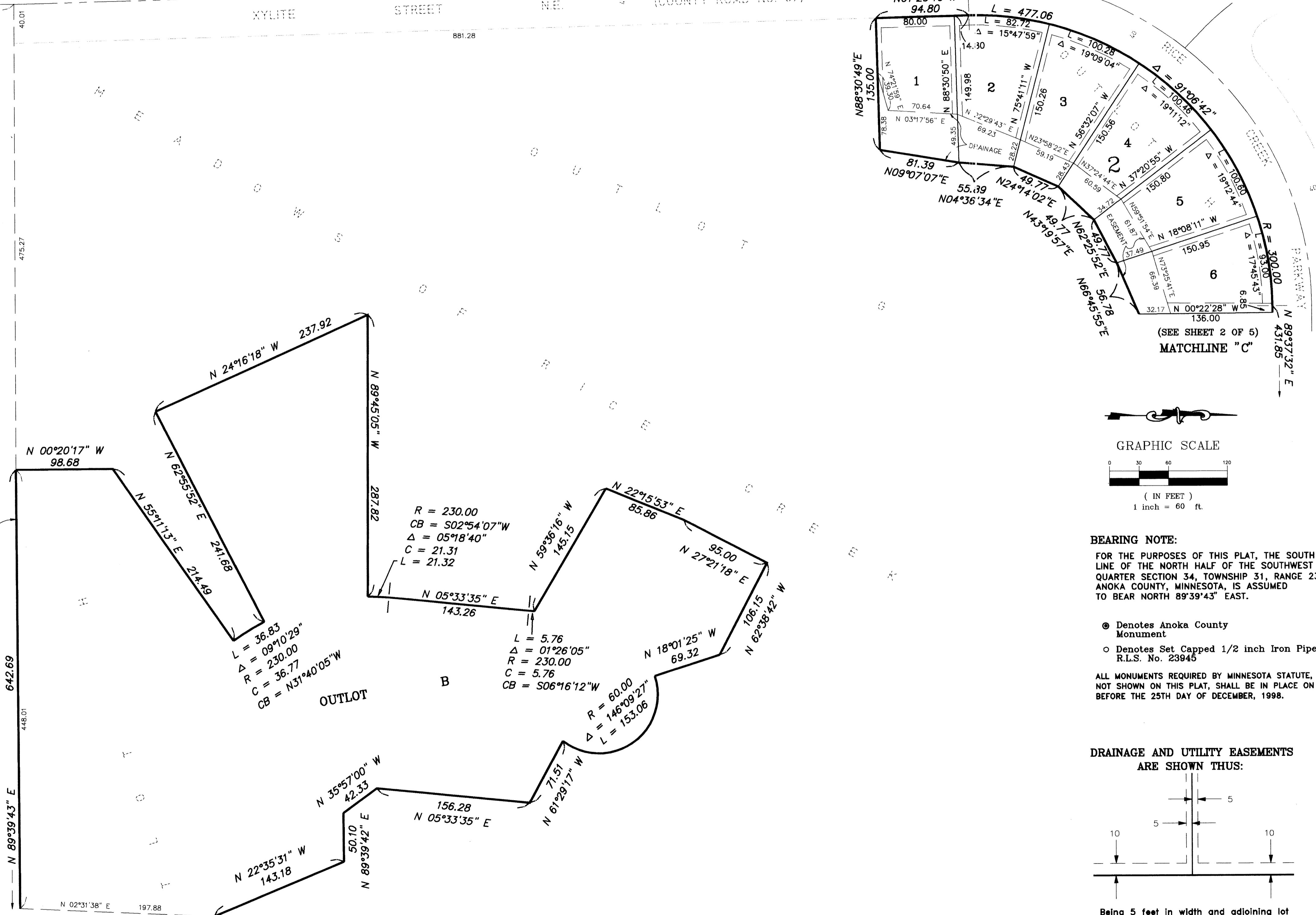
# MEADOWS OF RICE CREEK 2ND ADDITION

CITY OF BLAINE  
COUNTY OF ANOKA

WEST LINE OF SEC. 34, TWP. 31, RNG. 23.

(COUNTY ROAD NO. 37)

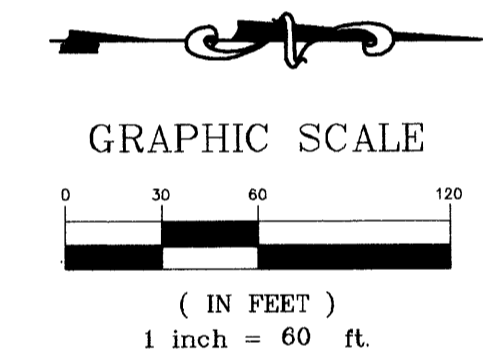
SOUTHWEST SECTION CORNER  
SEC. 34, TWP. 31, RNG. 23,  
AN ANOKA CO. MONUMENT N 01°29'10" W  
1328.94



SOUTH LINE OF THE N 1/2 OF THE SW 1/4,  
SEC. 34, TWP. 31, RNG. 23.

(SEE SHEET 5 OF 5)  
MATCHLINE "E"

(SEE SHEET 2 OF 5)  
MATCHLINE "C"

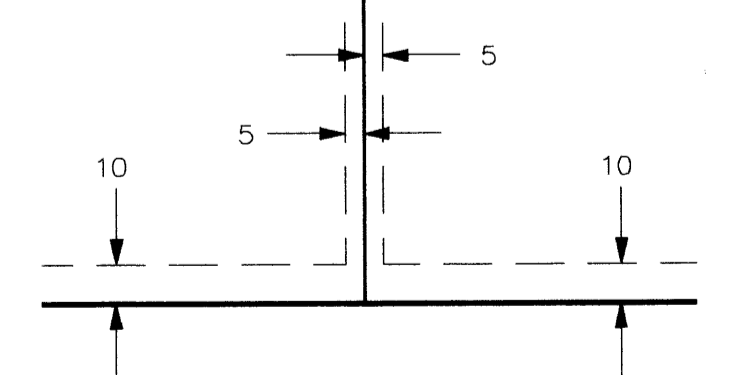


**BEARING NOTE:**  
FOR THE PURPOSES OF THIS PLAT, THE SOUTH LINE OF THE NORTH HALF OF THE SOUTHWEST QUARTER SECTION 34, TOWNSHIP 31, RANGE 23, ANOKA COUNTY, MINNESOTA, IS ASSUMED TO BEAR NORTH 89°39'43" EAST.

- Denotes Anoka County Monument
- Denotes Set Capped 1/2 inch Iron Pipe R.L.S. No. 23945

ALL MONUMENTS REQUIRED BY MINNESOTA STATUTE, AND NOT SHOWN ON THIS PLAT, SHALL BE IN PLACE ON OR BEFORE THE 25TH DAY OF DECEMBER, 1998.

**DRAINAGE AND UTILITY EASEMENTS ARE SHOWN THUS:**

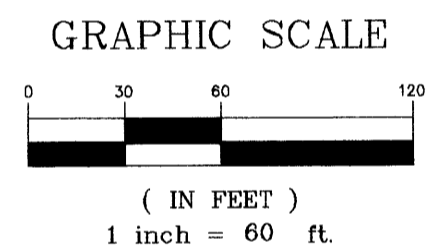
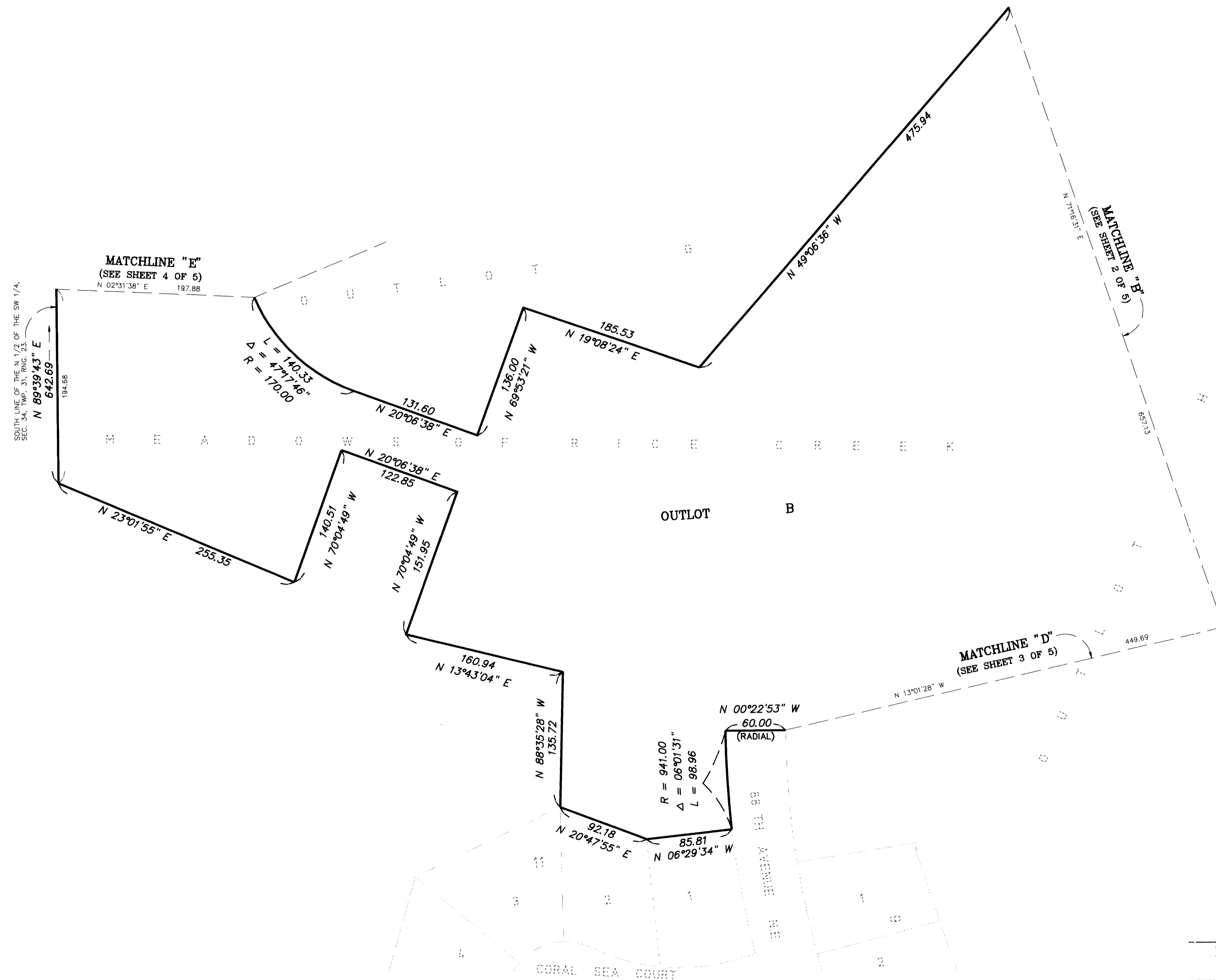


Being 5 feet in width and adjoining lot lines, and 10 feet in width and adjoining street lines, unless otherwise shown on the plat.

**PASSE ENGINEERING, INC.**  
REGISTERED PROFESSIONAL ENGINEERS  
LICENSED LAND SURVEYORS

# MEADOWS OF RICE CREEK 2ND ADDITION

CITY OF BLAINE  
COUNTY OF ANOKA

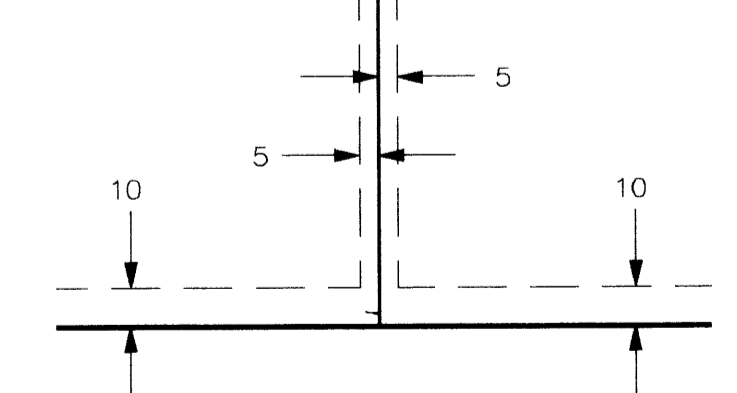


**BEARING NOTE:**  
FOR THE PURPOSES OF THIS PLAT, THE SOUTH LINE OF THE NORTH HALF OF THE SOUTHWEST QUARTER SECTION 34, TOWNSHIP 31, RANGE 23, ANOKA COUNTY, MINNESOTA, IS ASSUMED TO BEAR NORTH 89°39'43" EAST.

- ⊙ Denotes Anoka County Monument
- Denotes Set Capped 1/2 inch Iron Pipe R.L.S. No. 23945

ALL MONUMENTS REQUIRED BY MINNESOTA STATUTE, AND NOT SHOWN ON THIS PLAT, SHALL BE IN PLACE ON OR BEFORE THE 25TH DAY OF DECEMBER, 1998.

**DRAINAGE AND UTILITY EASEMENTS ARE SHOWN THUS:**



Being 5 feet in width and adjoining lot lines, and 10 feet in width and adjoining street lines, unless otherwise shown on the plat.

**PASSE ENGINEERING, INC.**  
REGISTERED PROFESSIONAL ENGINEERS  
LICENSED LAND SURVEYORS