

MEADOWS OF ST. FRANCIS 3RD ADDITION

CITY OF ST. FRANCIS
COUNTY OF ANOKA
SEC. 6, T. 33, R. 24

KNOW ALL PERSONS BY THESE PRESENTS: That Joshua/Markum Builders, Inc., a Minnesota corporation, owner of the following described property:

Lots 1, 2, 3, 4, 5, 6, 7, 8, and 9, Block 1, MEADOWS OF ST. FRANCIS, Anoka County, Minnesota.

and

Lots 15, 16, 17, 18, 19, 20, 21 and 22, Block 1, MEADOWS OF ST. FRANCIS, Anoka County, Minnesota.

and

Lot 67, Block 1, MEADOWS OF ST. FRANCIS, Anoka County, Minnesota.

Have caused the same to be surveyed and platted as MEADOWS OF ST. FRANCIS 3RD ADDITION and do hereby dedicate to the public for public use the drainage and utility easement as shown on this plat.

In witness whereof Joshua/Markum Builders, Inc., a Minnesota corporation, has caused these presents to be signed by its proper officer this 16th day of FEBRUARY, 2021.

JOSHUA/MARKUM BUILDERS, INC.

By [Signature] President
Mark Olson

STATE OF MINNESOTA
COUNTY OF Hennepin

This instrument was acknowledged before me this 16th day of February, 2021 by Mark Olson, President of Joshua/Markum Builders, Inc., a Minnesota corporation, on behalf of the corporation.

[Signature] Notary Public, Hennepin County, Minnesota, My Commission Expires 1-31-26
SUSAN PRASCH (printed name)

I Gregory R. Prasch do hereby certify that this plat was prepared by me or under my direct supervision; that I am a duly Licensed Land Surveyor in the State of Minnesota; that this plat is a correct representation of the boundary survey; that all mathematical data and labels are correctly designated on this plat; that all monuments depicted on this plat have been, or will be correctly set within one year; that all water boundaries and wet lands, as defined in Minnesota Statutes, Section 505.01, Subd. 3, as of the date of this certificate are shown and labeled on this plat; and all public ways are shown and labeled on this plat.

Dated this 15th day of February, 2021.

[Signature]
Gregory R. Prasch, Licensed Land Surveyor
Minnesota License No. 24992

STATE OF MINNESOTA
COUNTY OF HENNEPIN

This instrument was acknowledged before me this 15th day of February, 2021 by Gregory R. Prasch.

[Signature] Notary Public, Hennepin County, Minnesota, My Commission Expires 1-31-26
SUSAN PRASCH (printed name)

CITY COUNCIL, CITY OF ST. FRANCIS, MINNESOTA

This plat of MEADOWS OF ST. FRANCIS 3RD ADDITION was approved and accepted by the City Council of the City of St. Francis, Minnesota at a regular meeting thereof held this 16 day of February, 2021, and said plat is in compliance with the provisions of Minnesota Statutes, Section 505.03, Subd. 2.

CITY COUNCIL, CITY OF ST. FRANCIS, MINNESOTA

By [Signature] Mayor

[Signature] Clerk
St. Francis

ANOKA COUNTY SURVEYOR

I hereby certify that in accordance with Minnesota Statutes, Section 505.021, Subd. 11, this plat has been reviewed and approved this 18th day of February, 2021.

By [Signature]
Charles F. Gitzen, Anoka County Surveyor

COUNTY AUDITOR / TREASURER

Pursuant to Minnesota Statutes, Section 505.021, Subd. 9, taxes payable in the year 2021 on the land hereinbefore described have been paid. Also, pursuant to Minnesota Statutes, Section 272.12, there are no delinquent taxes and transfer entered this 18th day of Feb, 2021.

[Signature]
Property Tax Administrator

[Signature] Deputy

COUNTY RECORDER / REGISTRAR OF TITLES

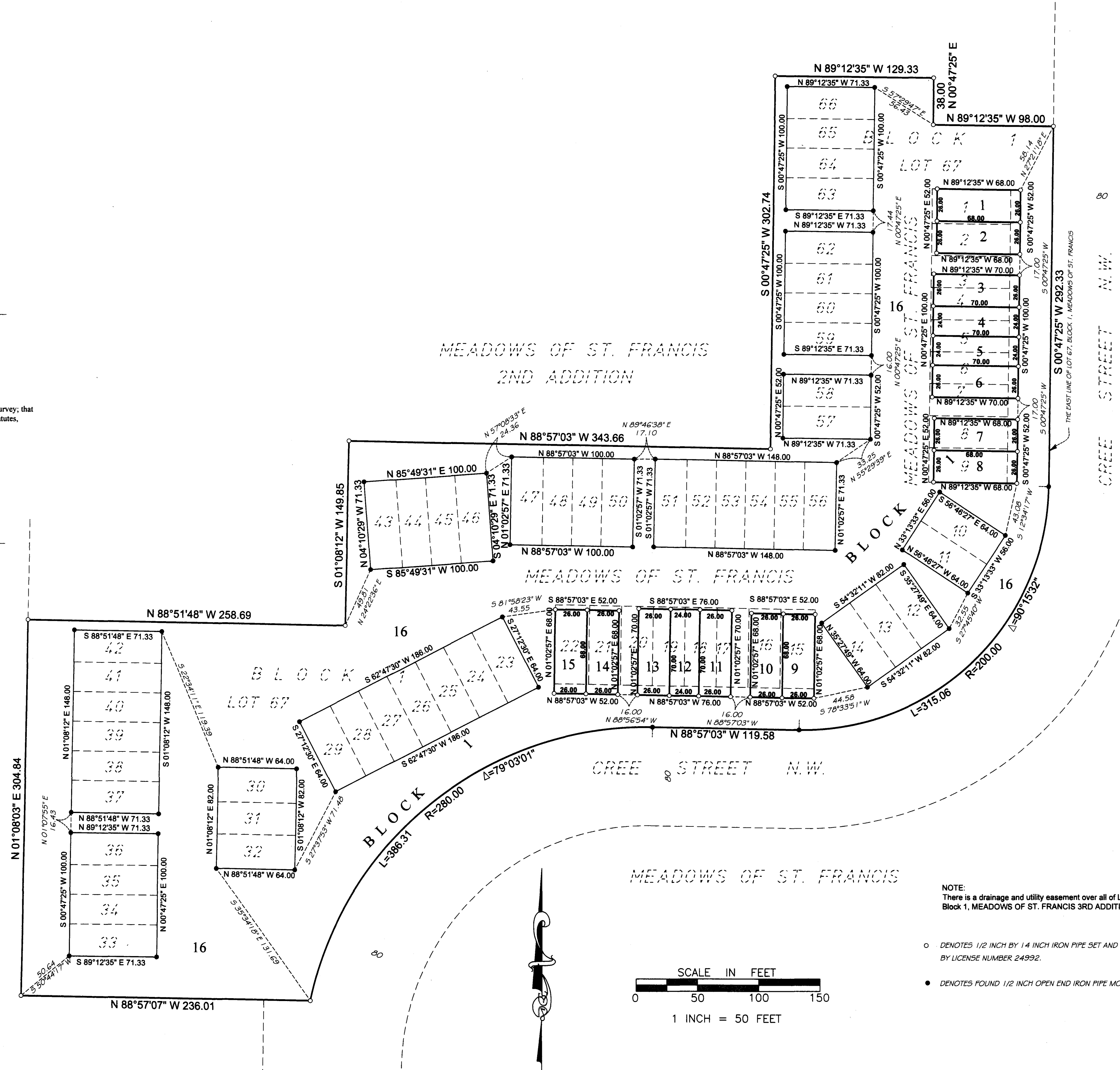
County of Anoka, State of Minnesota

I hereby certify that this plat of MEADOWS OF ST. FRANCIS 3RD ADDITION was filed in the office of the County Recorder/Registrar of Titles for public record on this 18th day of Feb.

2021 at 11:27 o'clock A.M. and was duly recorded as Document Number 584585.004

[Signature]
County Recorder / Registrar of Titles

[Signature] Deputy



FOR THE PURPOSES OF THIS PLAT THE EAST LINE OF LOT 67, BLOCK 1, MEADOWS OF ST. FRANCIS IS ASSUMED TO BEAR SOUTH 00°47'25" WEST.

DEMARC
LAND SURVEYING & ENGINEERING

\$56.00