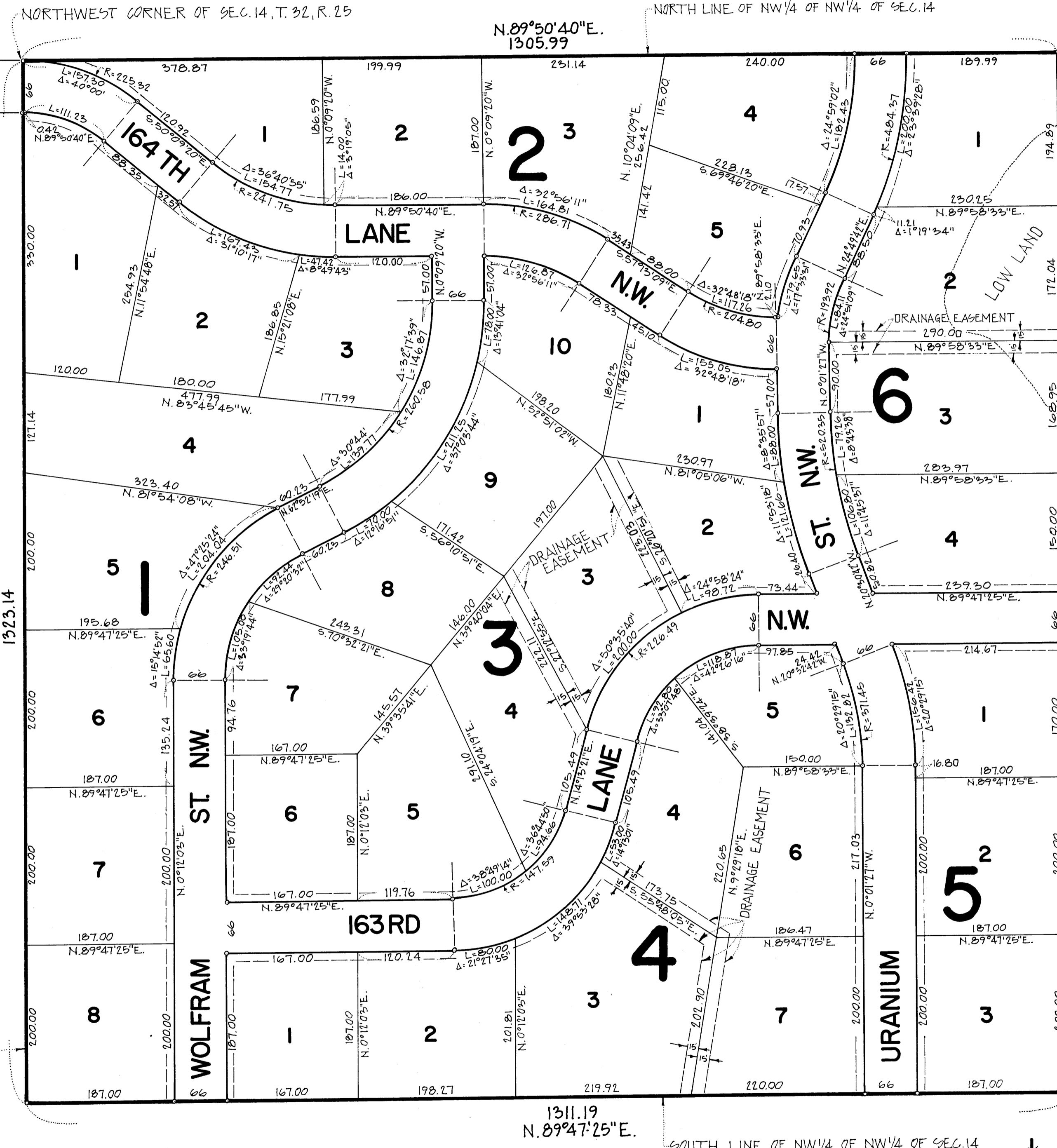


MENKVELD'S COUNTRY PARK

BEARINGS SHOWN ARE ASSUMED NOVEMBER, 1972 EGAN, FIELD & NOWAK

○ DENOTES IRON MONUMENT SCALE: 1 INCH EQUALS 100 FEET SURVEYORS



Know all men by these presents that G. M. Investment Co., a Minnesota Corporation, owner and proprietor of the following described property situated in the State of Minnesota and County of Anoka, to wit: The Northwest Quarter of the Northwest Quarter of Section 14, Township 32, Range 25, Anoka County, Minnesota, has caused the same to be surveyed and platted as MENKVELD'S COUNTRY PARK and does hereby donate and dedicate to the public for public use forever the lanes, streets and easements for drainage and utility purposes as shown on the plat.

In witness whereof said G. M. Investment Co., has caused these presents to be signed by its proper officer and its corporate seal to be hereunto affixed this 8th day of January A. D. 1973.

In presence of:
Jayne Tiffany
Gilbert A. Menkveld

G. M. INVESTMENT CO.
 by Gilbert A. Menkveld president
 Gilbert A. Menkveld

STATE OF MINNESOTA)
 COUNTY OF ANOKA) S. S. On this 7th day of January A. D. 1973, before me a Notary Public, personally appeared Gilbert A. Menkveld, to me personally known who by me duly sworn did say that he is president of G. M. Investment Co., the corporation named in the foregoing instrument, that the corporate seal affixed to said instrument is the corporate seal of said corporation and that said instrument was signed and sealed in behalf of said corporation by authority of its Board of Directors and said Gilbert A. Menkveld acknowledged said instrument to be the free act and deed of said corporation.

[Signature]
 Notary Public, Anoka County, Minnesota
 My commission expires July 17, 1976

I hereby certify that I have surveyed and platted the property described on this plat as MENKVELD'S COUNTRY PARK; that this plat is a correct representation of said survey; that all distances are correctly shown on the plat in feet and decimals of a foot; that monuments have been correctly placed in the ground as shown; and that the outside boundary lines are correctly designated on the plat, and that there are no wet lands or public highways to be designated on the plat other than as shown thereon.

Vernon A. Nickels
 Surveyor - Minnesota Registration No. 9053

STATE OF MINNESOTA)
 COUNTY OF HENNEPIN) S. S. The surveyor's certificate was subscribed and sworn to before me, a Notary Public, this 4th day of January A. D. 1973.

Chris Kuntz
 CHRIS KUNTZ, Notary Public, Hennepin County, Minnesota
 My commission expires March 4, 1975.

The plat of MENKVELD'S COUNTRY PARK was approved by the Planning and Zoning Commission and by the Town Board of the Township of Ramsey, Minnesota at a regular meeting thereof held this 8th day of January A. D. 1973.

Robert Murphy Chairman of the Town Board
James M. Pelton Clerk of the Town Board
Ray R. Reimann Chairman of the Planning and Zoning Commission

This plat was approved this 15th day of January, 1973, A. D.

by E. J. Lundberg
 County Engineer, Anoka County, Minnesota

This plat was approved as to form and execution this 23rd day of Jan, 1973, A. D.

by Stahn H. Munsterberg
 Asst. County Attorney, Anoka County, Minnesota

This plat was approved and accepted by the Honorable Board of County Commissioners of the County of Anoka, State of Minnesota, at a regular meeting thereof held this 23rd day of January, 1973, A. D.

by Edmund A. Kovalich Chairman of the Board
 by Charles R. Tophers County Auditor, Anoka County, Minnesota

Checked and approved this 23rd day of January A. D. 1973.

by Roland W. Anderson
 Anoka County Surveyor

"NO DELINQUENT TAXES AND TRANSFER ENTERED"
Mar. 9 19 73
Charles R. Lofgren
 Auditor, Anoka County
 BY Nancy C. Anspa
 Deputy

385094
 OFFICE OF REGISTER OF DEEDS
 STATE OF MINNESOTA, COUNTY OF ANOKA }
 I hereby certify that the within instrument was filed in this office for record on the 9th day of MAR, 1973, A. D., 1973 at 11:55 o'clock A. M., and was duly recorded in book 111 of 112, page 14.
Ed J. Oandahl
 Register of Deeds
 By Margaret Reimann, Deputy

