

# MIKE PRESERVE

CITY OF COLUMBUS  
COUNTY OF ANOKA  
SEC. 24, TWP. 32, RNG. 22

KNOW ALL PERSONS BY THESE PRESENTS: That Daniel J. Mike, a single person, owner and proprietor of the following described property:

That part of the Northeast Quarter of the Southeast Quarter of Section 24, Township 32, Range 22 lying East of Hornsby Street, Anoka County, Minnesota.

Has caused the same to be surveyed and platted as MIKE PRESERVE and does hereby dedicate to the public for public use the public way and the drainage and utility easements as shown on this plat.

In witness whereof said Daniel J. Mike, a single person, has hereunto set his hand this 6<sup>th</sup> day of August, 2021.

Signed: [Signature]  
Daniel J. Mike

STATE OF MINNESOTA  
COUNTY OF Chisago

This instrument was acknowledged before me this 6<sup>th</sup> day of August, 2021 by Daniel J. Mike.

[Signature] (Signature)  
Stephen Douglas (Print Name)  
Notary Public, Minnesota  
My Commission Expires 1/31/2022

I Kelly L. Jordan do hereby certify that this plat was prepared by me or under my direct supervision; that I am a duly Licensed Land Surveyor in the State of Minnesota; that this plat is a correct representation of the boundary survey; that all mathematical data and labels are correctly designated on this plat; that all monuments depicted on this plat have been, or will be correctly set within one year; that all water boundaries and wet lands, as defined in Minnesota Statutes, Section 505.01, Subd.3, as of the date of this certificate are shown and labeled on this plat; and all public ways are shown and labeled on this plat.

Dated this 5<sup>th</sup> day of August, 2021.

[Signature]  
Kelly L. Jordan, Licensed Land Surveyor  
Minnesota License No. 42648

STATE OF MINNESOTA  
COUNTY OF CHISAGO

This instrument was acknowledged before me this 5<sup>th</sup> day of August, 2021 by Kelly L. Jordan.

[Signature] (Signature)  
Rachel Jo Francken (Print Name)  
Notary Public, Minnesota  
My Commission Expires 1/31/2024

CITY COUNCIL, CITY OF COLUMBUS, MINNESOTA

This plat of MIKE PRESERVE was approved and accepted by the City Council of the City of Columbus, Minnesota at a regular meeting thereof held this 28<sup>th</sup> day of July, 2021, and said plat is in compliance with the provisions of Minnesota Statutes, Section 505.03, Subd. 2.

CITY COUNCIL, CITY OF COLUMBUS, MINNESOTA

By: Jesse H. Prineas Mayor  
By: Ejeth Mushi Clerk

COUNTY SURVEYOR

I hereby certify that in accordance with Minnesota Statutes, Section 505.021, Subd. 11, this plat has been reviewed and approved this 14<sup>th</sup> day of September, 2021.

By: [Signature]  
David M. Ziegler, Anoka County Surveyor

COUNTY AUDITOR/TREASURER

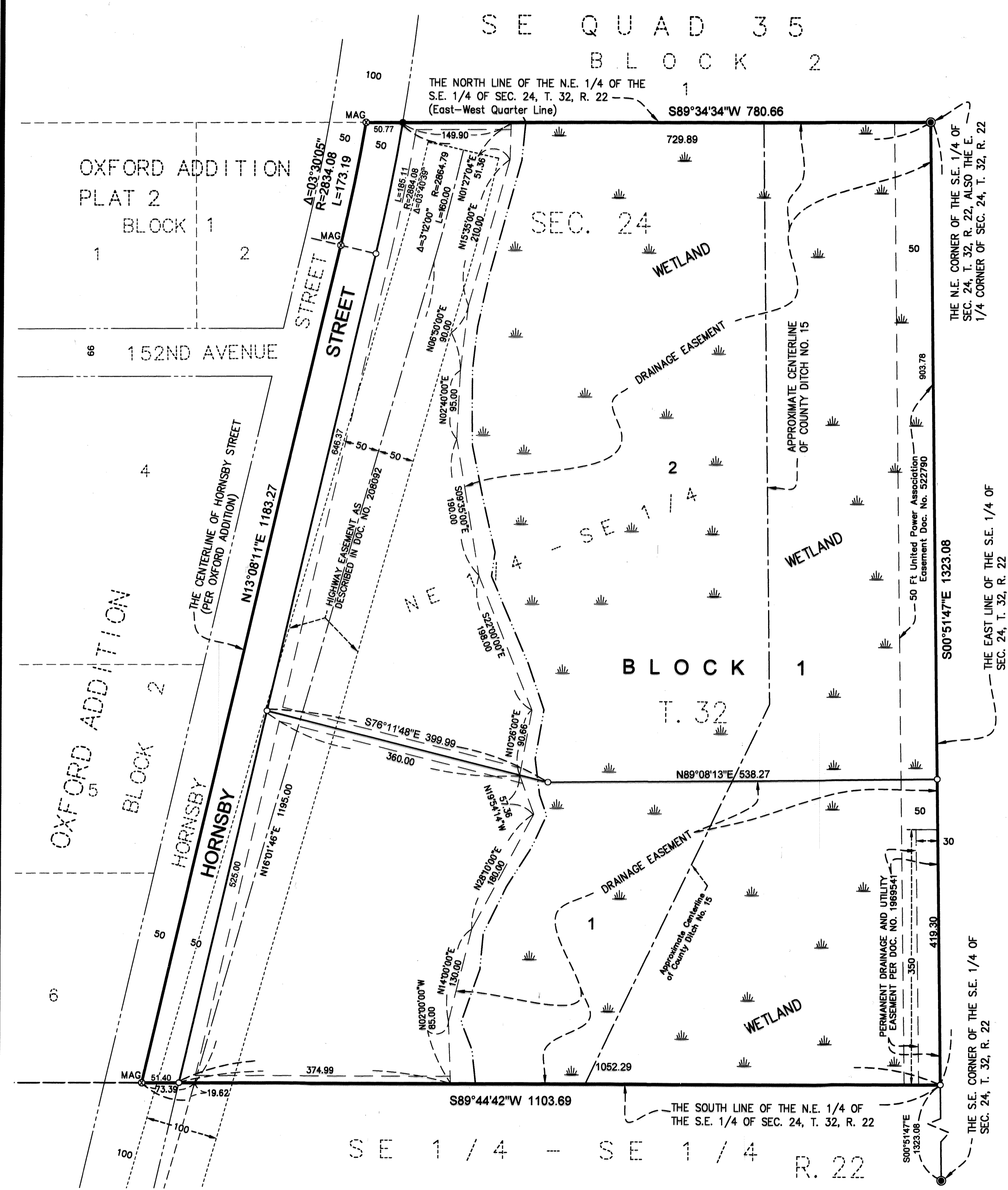
Pursuant to Minnesota Statutes, Section 505.021, Subd.9, taxes payable in the year 2021 on the land hereinbefore described have been paid. Also, pursuant to Minnesota Statutes, Section 272.12, there are no delinquent taxes and transfer entered this 14<sup>th</sup> day of September, 2021.

Pamela J LeBlanc  
Property Tax Administrator  
By: Rose A Tendo, Deputy

COUNTY RECORDER/REGISTRAR OF TITLES  
County of Anoka, State of Minnesota

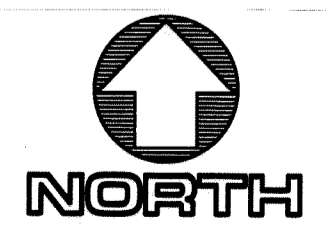
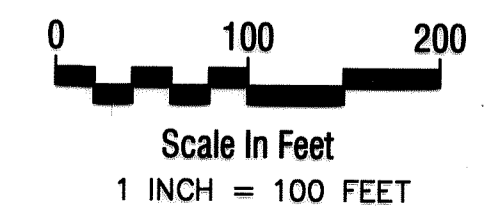
I hereby certify that this plat of MIKE PRESERVE was filed in the office of the County Recorder/Registrar of Titles for public record on this 14<sup>th</sup> day of September, 2021, at 2:24 o'clock P.M. and was duly recorded as Document Number 2336347.001.

Pamela J LeBlanc  
County Recorder/ Registrar of Titles  
By: Rose A Tendo, Deputy



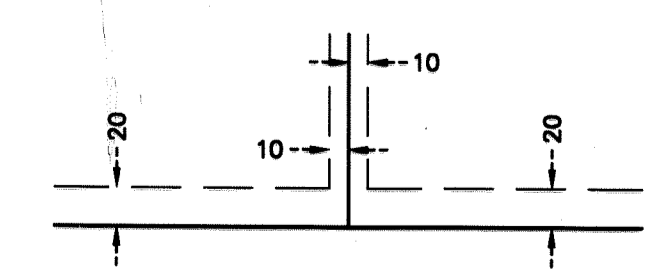
## WIDSETH

ARCHITECTS • ENGINEERS • SCIENTISTS • SURVEYORS



FOR THE PURPOSES OF THIS PLAT, THE SOUTH LINE OF THE NORTHEAST QUARTER OF THE SOUTHEAST QUARTER OF SECTION 24, TOWNSHIP 32, RANGE 22, ANOKA COUNTY, MINNESOTA IS ASSUMED TO HAVE A BEARING OF SOUTH 89 DEGREES 44 MINUTES 42 SECONDS WEST.

DRAINAGE AND UTILITY EASEMENTS ARE SHOWN THUS:



BEING 20 FEET IN WIDTH ADJOINING STREET LINES AND 10 FEET IN WIDTH ADJOINING LOT LINES, UNLESS OTHERWISE SHOWN ON THIS PLAT.

### LEGEND

- DENOTES FOUND 1/2 INCH PIPE CAP NO. 13590
- DENOTES A SET 1/2 INCH BY 14 INCH IRON PIPE WITH A PLASTIC CAP INSCRIBED LS 42648.
- DENOTES ANOKA COUNTY MONUMENT
- MAG DENOTES A SET MAG. NAIL AND WASHER INSCRIBED LS 42648
- DENOTES WETLAND DELINEATED BY BOPRAY ENVIRONMENTAL ON AUGUST 2020

\$56.00