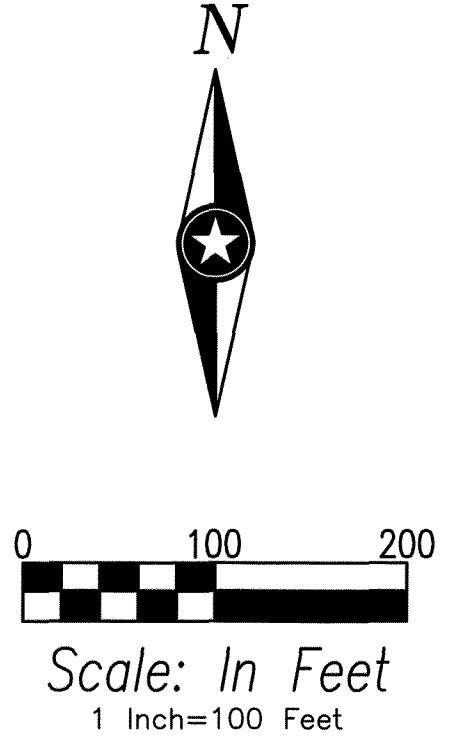
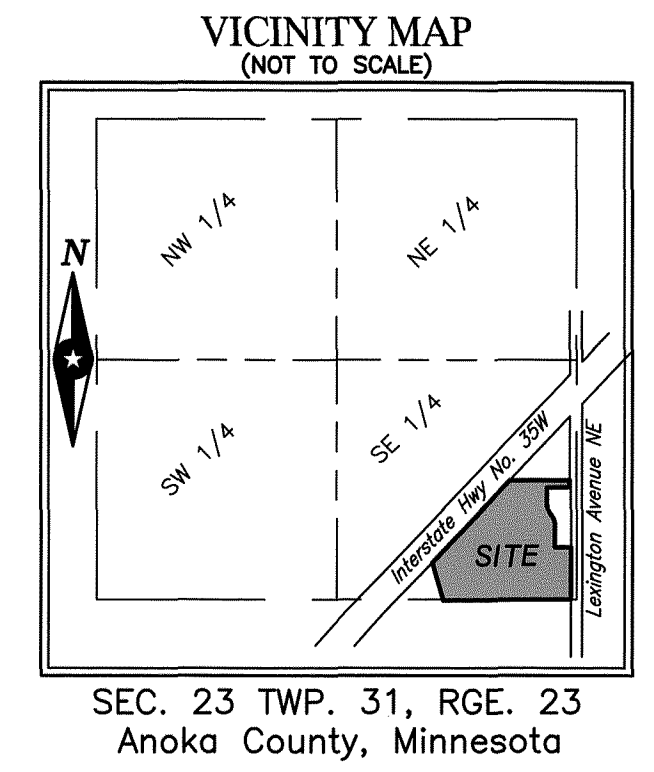
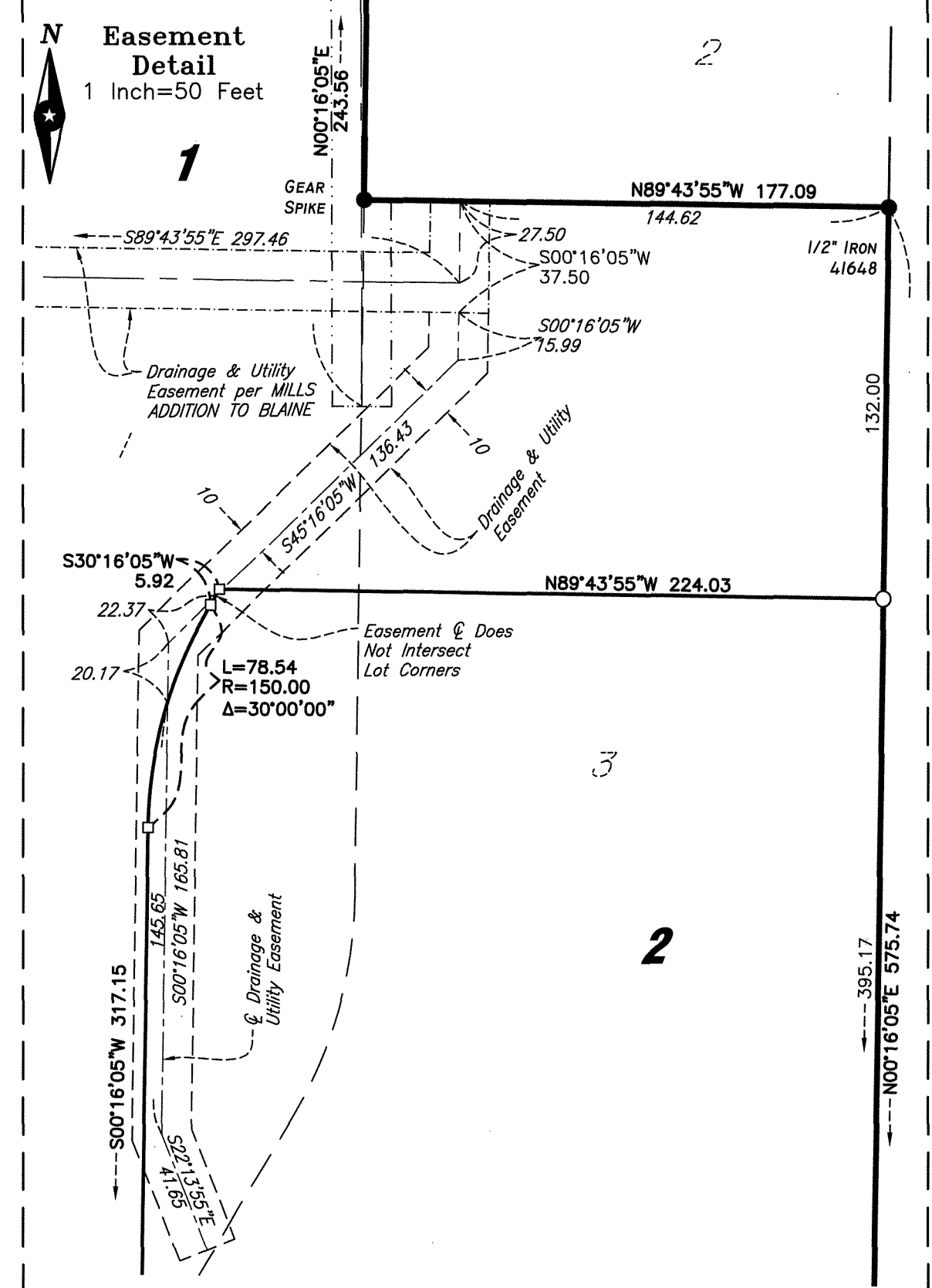


MILLS SECOND ADDITION TO BLAINE

Book 78 of Abst Page 24

City of Blaine
County of Anoka
Section 23, Township 31, Range 23

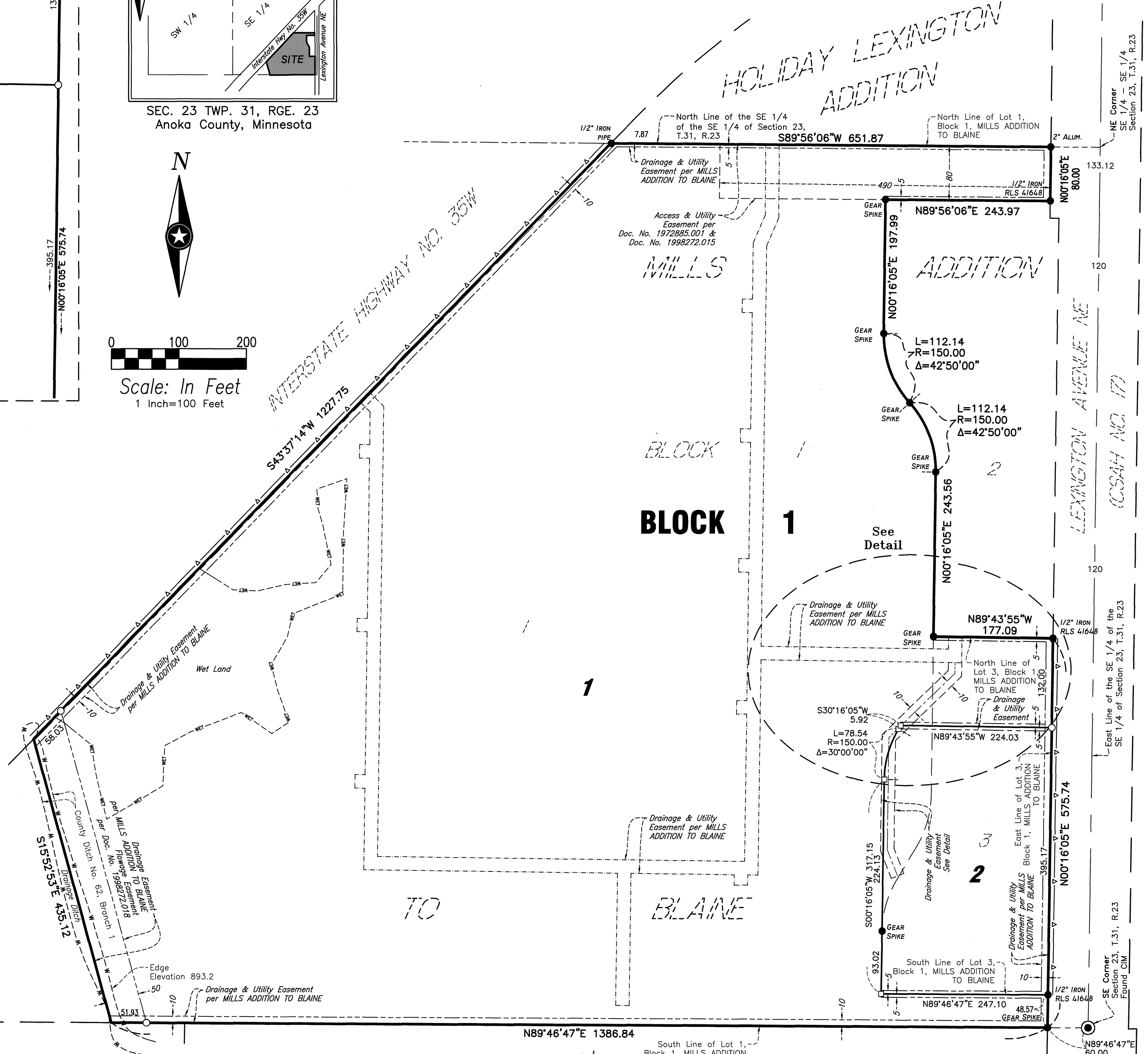


- LEGEND**
- IRON MONUMENT FOUND
 - INDICATES 1/2" DIA. x 18" LONG SOLID IRON PIPE SET WITH PLASTIC CAP MARKED BY 16S, LICENSE NO. 43110 TO BE SET BEFORE TIME OF RECORDING.
 - INDICATES MAG NAIL TO BE SET BEFORE TIME OF RECORDING.
 - WET LAND LINE
 - W- WATER'S EDGE AS LOCATED 2-25-15
 - △ INDICATES RIGHT OF ACCESS DEDICATED TO STATE OF MINNESOTA OR ANOKA COUNTY PER PLAT OF MILLS ADDITION TO BLAINE

BEARING NOTE:
The orientation of this bearing system is based on the south line of Lot 1, Block 1, MILLS ADDITION TO BLAINE, said line is assumed to have a bearing of North 89 degrees 46 minutes 47 seconds East.

BENCHMARK:
Offsite benchmark MnDOT monument ANOKA BM 44. Elev=906.82 (NAVD88)

NOTE:
See Sheet 2 for additional existing easement information.



KNOW ALL PERSONS BY THESE PRESENTS: That Mills Properties, Inc., a Wisconsin corporation, owner of the following described property:

Lots 1 and 3, Block 1, MILLS ADDITION TO BLAINE, Anoka County, Minnesota.

Has caused the same to be surveyed and platted as MILLS SECOND ADDITION TO BLAINE and does hereby dedicate to the public for public use the drainage and utility easements as created by this plat.

In witness whereof said Mills Properties, Inc., a Wisconsin corporation, has caused these presents to be signed by its proper officers this 17th day of July, 2015.

Mills Properties, Inc.
 Stewart C. Mills, Jr.
 Co-President/Secretary
 Henry C. Mills, II
 Co-President/Treasurer

State of Minnesota
 County of Crow Wing
 This instrument was acknowledged before me on July 8, 2015 by Stewart C. Mills, Jr., Co-President/Secretary, and Henry C. Mills, II, Co-President/Treasurer of Mills Properties, Inc., a Wisconsin corporation, on behalf of the corporation.

Tommy J. Jackson
 Notary Public Minnesota
 My Commission Expires 01/31/21

I Daniel L. Stueber do hereby certify that this plat was prepared by me or under my direct supervision; that I am a duly Licensed Land Surveyor in the State of Minnesota; that this plat is a correct representation of the boundary survey; that all mathematical data and labels are correctly designated on this plat; that all monuments depicted on this plat have been, or will be correctly set within one year; that all water boundaries and wet lands, as defined in Minnesota Statutes, Section 505.01, Subd. 3, as of the date of this certificate are shown and labeled on this plat; and all public ways are shown and labeled on this plat.

Dated this 8th day of July, 2015.
D. L. Stueber
 Daniel L. Stueber, Licensed Land Surveyor
 Minnesota License No. 43110

State of Minnesota
 County of Blue Earth
 This instrument was acknowledged before me on July 8, 2015 by Daniel L. Stueber.
Kent A. Hays
 Kent A. Hays
 Notary Public, Minnesota
 My Commission Expires Jan. 31, 2020

CITY COUNCIL, CITY OF BLAINE, MINNESOTA
 This plat of MILLS SECOND ADDITION TO BLAINE was approved and accepted by the City Council of the City of Blaine, Minnesota at a regular meeting thereof held this 21st day of May, 2015, and said plat is in compliance with the provisions of Minnesota Statutes, Section 505.03, Subd. 2.
 City Council, City Of Blaine, Minnesota

Andrew J. ...
 Mayor
Colleen Jensen
 City Clerk

COUNTY SURVEYOR
 I hereby certify that in accordance with Minnesota Statutes, Section 505.021 Subd. 11, this plat has been reviewed and approved this 17th day of July, 2015.

By: Larry D. Heium by Charles F. Reitzen, Deputy
 Larry D. Heium
 Anoka County Surveyor

COUNTY AUDITOR/TREASURER
 Pursuant to Minnesota Statutes, Section 505.021, Subd. 9, taxes payable in the year 2015 on the land hereinbefore described have been paid. Also, pursuant to Minnesota Statutes, Section 272.12, there are no delinquent taxes and transfer entered this 17 day of July, 2015.

Jonell M Sawyer
 Property Tax Administrator
 By: Marcia Earnest, Deputy

COUNTY RECORDER/REGISTRAR OF TITLES
 COUNTY OF ANOKA, STATE OF MINNESOTA

I hereby certify that this plat of MILLS SECOND ADDITION TO BLAINE was filed in the office of the County Recorder/Registrar of Titles for public record on this 17 day of July, 2015 at 2:34 o'clock P.M. and was duly recorded in Book 78 Page 24 Abst as Document Number 2113358.003.

Jonell M Sawyer
 County Recorder/Registrar of Titles
 By: Marcia Earnest, Deputy



\$56.00

MILLS SECOND ADDITION TO BLAINE

EXISTING EASEMENT DIMENSIONING SHEET



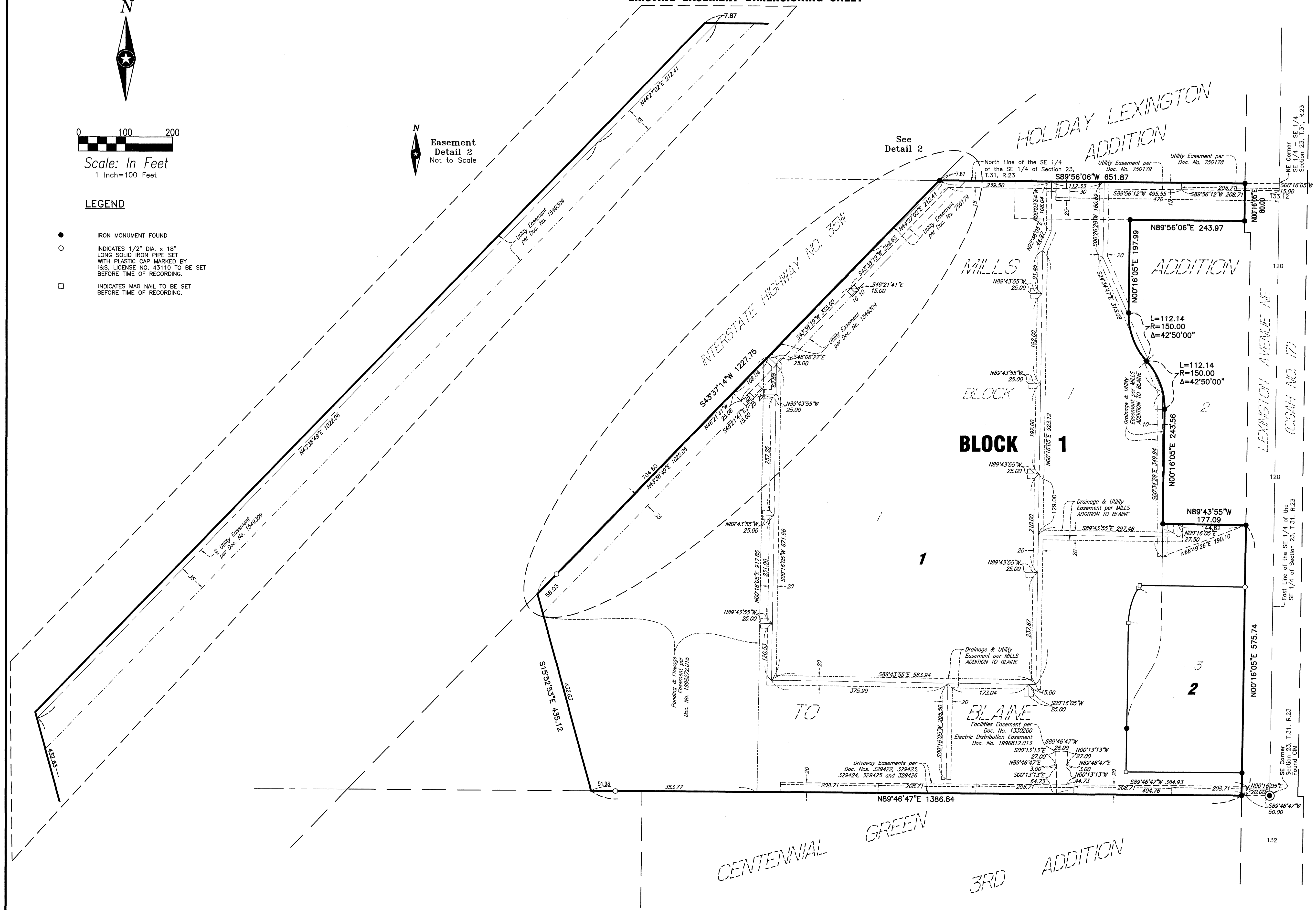
Scale: In Feet
1 Inch=100 Feet

LEGEND

- IRON MONUMENT FOUND
- INDICATES 1/2" DIA. x 18" LONG SOLID IRON PIPE SET WITH PLASTIC CAP MARKED BY I&S, LICENSE NO. 43110 TO BE SET BEFORE TIME OF RECORDING.
- INDICATES MAG NAIL TO BE SET BEFORE TIME OF RECORDING.

Easement
Detail 2
Not to Scale

See
Detail 2



Architecture
Engineering
Environmental
Planning
www.is-grp.com