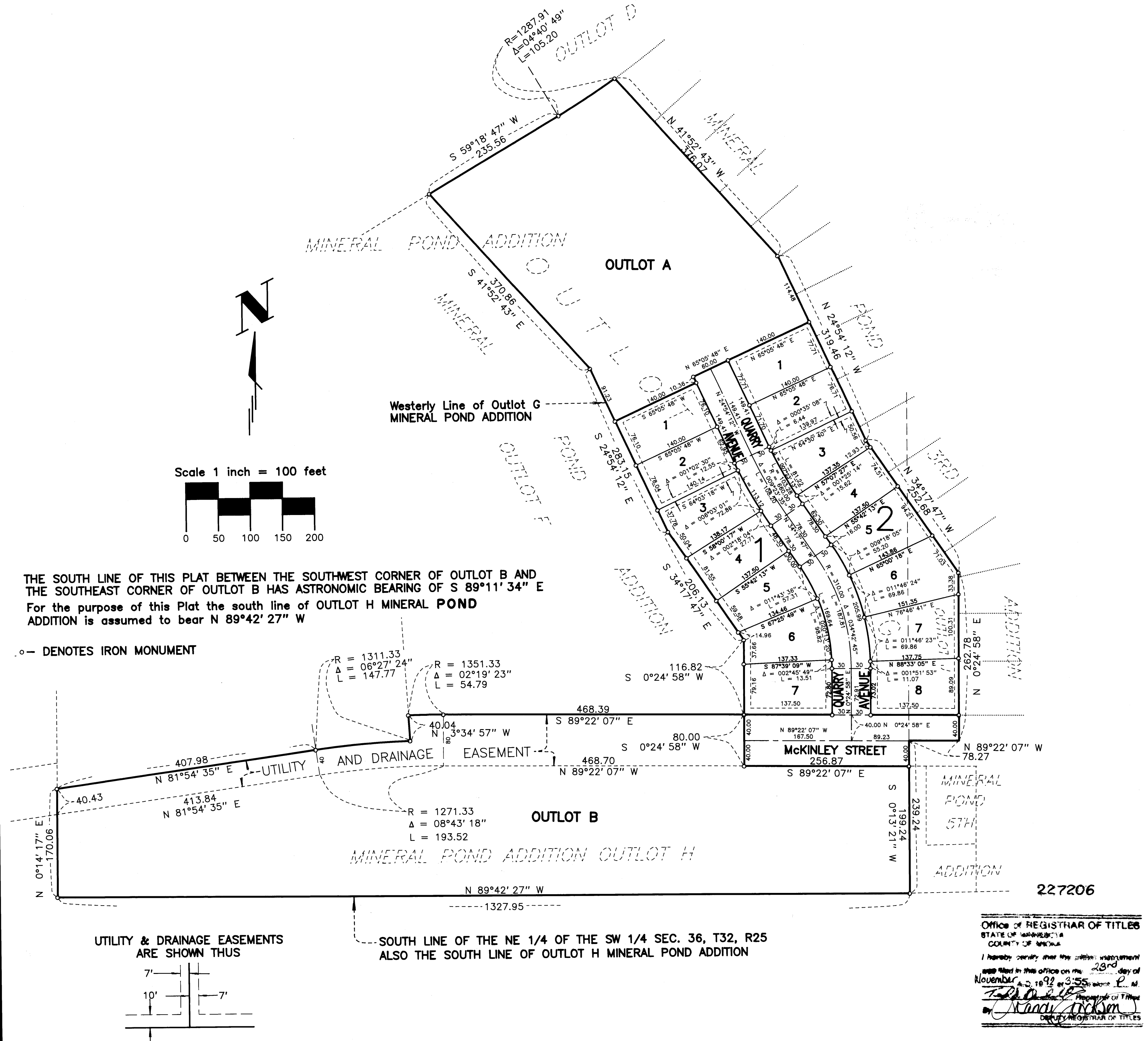


MINERAL POND 4TH ADDITION CITY OF ANOKA COUNTY OF ANOKA



KNOW ALL PERSONS BY THESE PRESENTS: That The Astra Projects, Incorporated, a Minnesota Corporation, owner and proprietor of the following described property situated in the County of Anoka, State of Minnesota, to wit:

Outlots G and H, MINERAL POND ADDITION, according to the plat on file in the office of the Registrar of Titles, Anoka County, Minnesota.
AND
Outlot J, MINERAL POND ADDITION, as corrected by Surveyor's Certificate filed as Anoka County Recorder Document No. 695501.

Has caused the same to be surveyed and platted as MINERAL POND 4TH ADDITION and does hereby donate and dedicate to the public for public use forever the avenue, the street and the utility and drainage easements shown on the plat.

In witness thereof The Astra Projects, Incorporated, a Minnesota Corporation, has caused these presents to be signed by its proper officer this 27th day of October, 1992.

Signed: THE ASTRA PROJECTS, INCORPORATED

William J. Gedge as its Vice President
Robert W. Schmidt as its Vice President and Secretary

STATE OF MINNESOTA
COUNTY OF HENNEPIN

The foregoing instrument was acknowledged before me this 27th day of October, 1992, by *William J. Gedge* as Vice Pres. and *Robert W. Schmidt* as Vice President and of The Astra Projects, Incorporated, a Minnesota Corporation, on behalf of the corporation.

DIANA LISA PERKINS
NOTARY PUBLIC - MINNESOTA
HENNEPIN COUNTY
My Commission Expires July 18, 1994

Diana Lisa Perkins
Notary Public
Hennepin County, Minnesota
My Commission Expires July 18, 1994

I hereby certify that I have surveyed and platted the property described on this plat as MINERAL POND 4TH ADDITION; that this plat is a correct representation of said survey; that all monuments have been correctly placed in the ground as shown on the plat; that all distances are correctly shown on the plat in feet and hundredths of a foot; that the outside boundary lines are correctly designated on the plat; and that there are no wetlands or public highways to be designated on the plat other than as shown thereon.

Thomas H. Veenker
Thomas H. Veenker, Land Surveyor
Minnesota License No. 12254

STATE OF MINNESOTA
COUNTY OF HENNEPIN

The foregoing instrument was acknowledged before me this 27th day of October, 1992, by Thomas H. Veenker, Land Surveyor.

GRAYDON R. BOECK
NOTARY PUBLIC - MINNESOTA
HENNEPIN COUNTY
My Commission Expires Nov 3, 1994

Graydon R. Boeck
Graydon R. Boeck, Notary Public
Hennepin County, Minnesota
My Commission Expires Nov 3, 1994

CITY OF ANOKA

This plat of MINERAL POND 4TH ADDITION was approved by the Planning Commission of the City of Anoka at the regular meeting held this 8th day of April, 1992.

Signed: *Jim Peterson* Chairman
Attest: *Melinda Coleman* Secretary

CITY OF ANOKA

We hereby certify that the City Council of the City of Anoka, Anoka County, Minnesota duly accepted and approved the plat of MINERAL POND 4TH ADDITION at a regular meeting thereof held this 23rd day of November, 1992. If applicable, the written comments and recommendations of the Commissioner of Transportation and the County Highway Engineer have been received by the City or the prescribed 30 day period has elapsed without receipt of such comments and recommendations, as provided by Minnesota Statutes, Section 506.03, Subd. 2.

Signed: *Peter M. Beberg* Mayor
Attest: *Mark E. Nagel* Clerk

Checked and approved this 23rd day of Nov, 1992.

Merlyn D. Anderson by *Larry D. ...* Deputy
Merlyn D. Anderson, Anoka County Surveyor

I HEREBY CERTIFY THAT THE CURRENT AND DELINQUENT TAXES ON THE LANDS DESCRIBED WITHIN ARE PAID AND THE TRANSFER IS

ENTERED Nov. 23 1992
EDWARD M. TRIESKA
PROPERTY TAX ADMINISTRATOR

By *S. Culver*
DEPUTY PROPERTY TAX ADMINISTRATOR

BEING 10 FEET IN WIDTH AND ADJOINING STREET LINES & 7 FEET IN WIDTH AND ADJOINING REAR LOT LINES UNLESS OTHERWISE SHOWN ON THE PLAT.