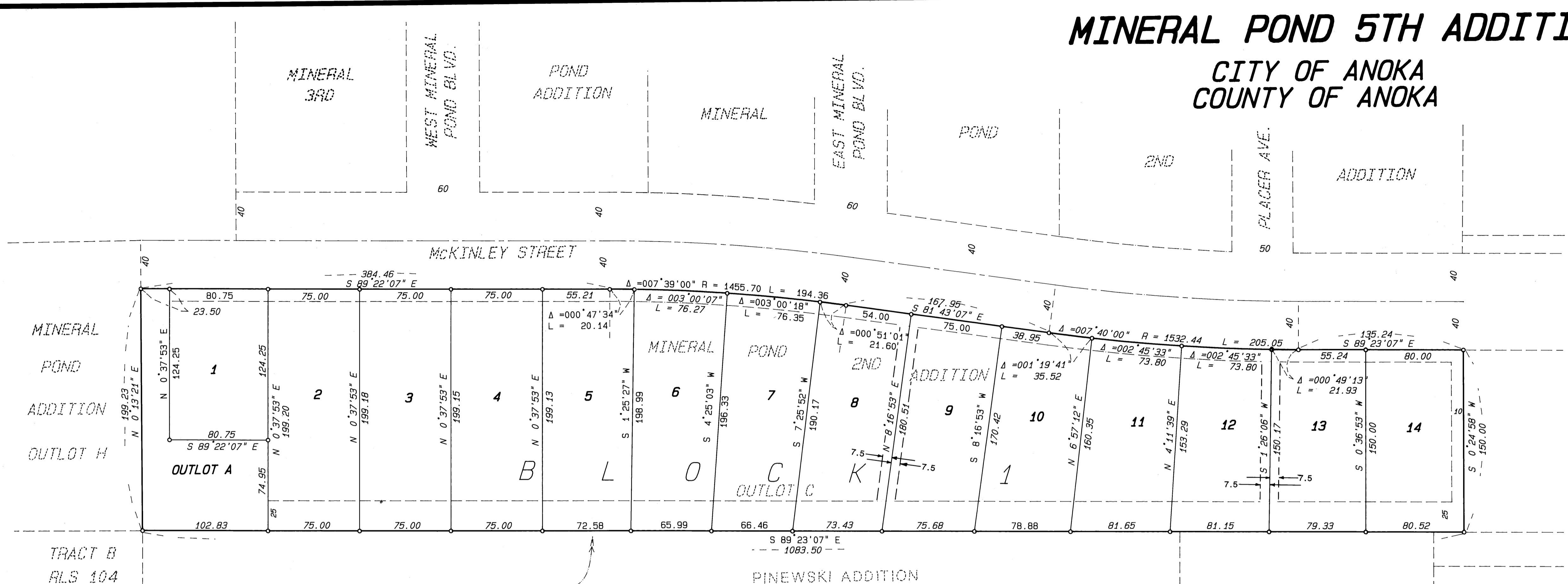


MINERAL POND 5TH ADDITION

CITY OF ANOKA COUNTY OF ANOKA

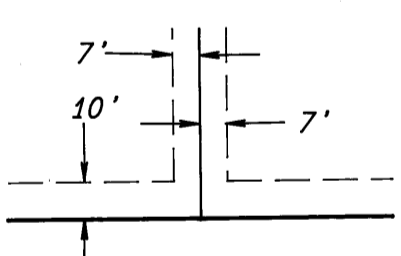


MINERAL POND ADDITION OUTLOT H

TRACT B
PLS 104

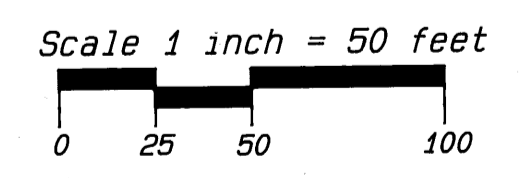
South line of the NW 1/4 OF SE 1/4 of SEC. 36, TWP. 32, R6E.25 Also South line OUTLOT C MINERAL POND 2ND ADDITION

UTILITY & DRAINAGE EASEMENTS ARE SHOWN THUS



BEING 10 FEET IN WIDTH AND ADJOINING STREET LINES & 7 FEET IN WIDTH AND ADJOINING REAR LOT LINES UNLESS OTHERWISE INDICATED, AS SHOWN ON THE PLAT.

THE SOUTH LINE OF THIS PLAT BETWEEN THE SOUTHWEST CORNER OF OUTLOT A AND THE SOUTHEAST CORNER OF LOT 14, BLOCK 1, HAS AN ASTRONOMIC BEARING OF S 88°52'14" E.



For the purpose of this Plat the south line of OUTLOT C, MINERAL POND 2ND ADDITION is assumed to bear N 89°23'07" W

o - DENOTES IRON MONUMENT

KNOW ALL PERSONS BY THESE PRESENTS: That The Astra Projects, Incorporated, a Minnesota Corporation, owner and proprietor of the following described property situated in the County of Anoka, State of Minnesota, to wit:

Outlot C, MINERAL POND 2ND ADDITION, according to the plat on file in the Registrar of Titles, Anoka County, Minnesota.

Has caused the same to be surveyed and platted as MINERAL POND 5TH ADDITION and does hereby donate and dedicate to the public for public use forever the utility and drainage easements shown on the plat. In witness whereof The Astra Projects, Incorporated, a Minnesota Corporation, has caused these presents to be signed by its proper officers this 13th day of SEPTEMBER 1991.

Signed: THE ASTRA PROJECTS, INCORPORATED
Wilbur H. Goetie as ITS, VICE PRESIDENT
Evelyn P. Schmidt as ITS, EXECUTIVE VICE PRESIDENT

State of Minnesota
 County of Hennepin
 The foregoing instrument was acknowledged before me this 13 day of September, 1991, by *Wilbur H. Goetie* as Vice President and *Evelyn P. Schmidt* as Executive Vice Pres. of The Astra Projects, Incorporated, a Minnesota Corporation, on behalf of the corporation.

Diana Lea Reinking
 Notary Public
 Hennepin County, Minnesota
 My Commission Expires July 18, 1994

I HEREBY CERTIFY THAT THE CURRENT AND DELINQUENT TAXES ON THE LANDS DESCRIBED WITHIN ARE PAID AND THE TRANSFER IS VALID AND CORRECT AND UNOBJECTIONABLE.
 Sept. 23 1991
Edward M. Treska
 PROPERTY TAX ADMINISTRATOR

I HEREBY CERTIFY THAT THE CURRENT AND DELINQUENT TAXES ON THE LANDS DESCRIBED WITHIN ARE PAID AND THE TRANSFER IS VALID AND CORRECT AND UNOBJECTIONABLE.
 ENTERED Sept. 16 1991
Edward M. Treska
 PROPERTY TAX ADMINISTRATOR
 BY *J. Carville*
 DEPUTY PROPERTY TAX ADMINISTRATOR

I hereby certify that I have surveyed and platted the property described on this plat as MINERAL POND 5TH ADDITION; that this plat is a correct representation of said survey; that all monuments have been correctly placed in the ground as shown on the plat; that all distances are correctly shown on the plat in feet and hundredths of a foot; that the outside boundary lines are correctly designated on the plat; and that there are no wetlands or public highways to be designated on the plat other than as shown thereon.

Thomas H. Veenker
 Thomas H. Veenker, Land Surveyor
 Minnesota License No. 12254

State of Minnesota
County of Hennepin

The foregoing instrument was acknowledged before me this 10th day of July, 1991, by Thomas H. Veenker, Land Surveyor.

Graydon R. Boeck
 GRAYDON R. BOECK
 NOTARY PUBLIC - MINNESOTA
 HENNEPIN COUNTY
 My Commission Expires Nov. 3, 1994

CITY OF ANOKA
 This plat of MINERAL POND 5TH ADDITION was approved by the Planning Commission of the City of Anoka at the regular meeting held this 15th day of APRIL, 1991.
 Signed: *Edward M. Treska* Chairman
 Attest: *Melinda Coleman* Secretary

CITY OF ANOKA
 We hereby certify that the City Council of the City of Anoka, Anoka County, Minnesota duly accepted and approved the plat of MINERAL POND 5TH ADDITION at the regular meeting thereof held this 15th day of APRIL, 1991. If applicable, the written comments and recommendations of the Commissioner of Transportation and the County Highway Engineer have been received by the City or the prescribed 30 day period has elapsed without receipt of such comments and recommendations, as provided by Minnesota Statutes, Section 505.03, Subd. 2.

Signed: *Peter M. Babery* Mayor
 Attest: *Mark Nagel* Clerk

Checked and approved this 16th day of SEPTEMBER, 1991.

Meryl D. Anderson
 Meryl D. Anderson, Anoka County Surveyor
 by *Larry D. Ahlin* deputy

2 11887
 Office of REGISTRAR OF TITLES
 STATE OF MINNESOTA
 COUNTY OF ANOKA
 I hereby certify that the within instrument was filed in this office on the 23rd day of Sept. A.D. 1991 at 11:55 A.M.
Paul D. Bell Registrar of Titles
 by *K. Othman* Deputy Registrar of Titles

ALL-METRO DEVELOPMENT CONSULTANTS, P.A.
LAND SURVEYING • ENGINEERING • CONSTRUCTION STAKING