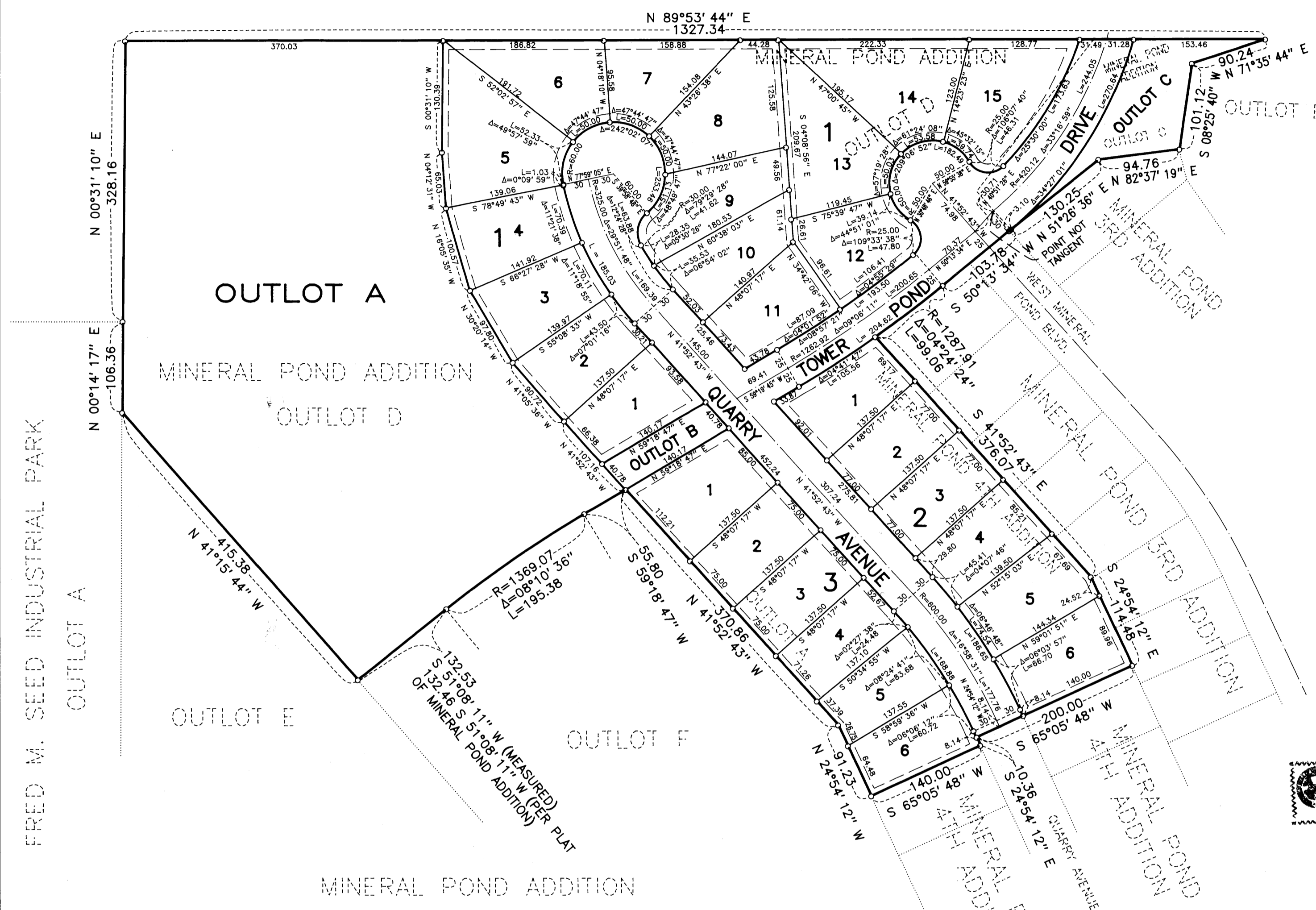


MINERAL POND 6TH ADDITION CITY OF ANOKA COUNTY OF ANOKA



KNOW ALL PERSONS BY THESE PRESENTS: That The Astra Projects, Incorporated, a Minnesota Corporation, owner and proprietor of the following described property situated in the County of Anoka, State of Minnesota, to wit:

Outlot D MINERAL POND ADDITION, According to the plat on file in the office of the registrar of Titles, Anoka County, Minnesota.
AND
Outlot A MINERAL POND 4TH ADDITION, According to the plat on file in the office of the registrar of Titles, Anoka County, Minnesota.

also, That the City of Anoka, a Minnesota Municipal Corporation, owner and proprietor of the following described property situated in the County of Anoka, State of Minnesota, to wit:

Outlot C MINERAL POND ADDITION, According to the plat on file in the office of the registrar of Titles, Anoka County, Minnesota.

Have caused the same to be surveyed and platted as MINERAL POND 6TH ADDITION and do hereby donate and dedicate to the public for public use forever the avenue, the drive and the utility and drainage easements shown on the plat.

In witness thereof The Astra Projects, Incorporated, a Minnesota Corporation, has caused these presents to be signed by its proper officers this 24th day of August, 1994.

Signed: THE ASTRA PROJECTS, INCORPORATED
Robert W. Schmidt as Vice President
Thomas P. Lehoux as Treasurer

In witness thereof The City of Anoka, a Minnesota Municipal Corporation, has caused these presents to be signed by its proper officers this 17th day of October, 1994.

Signed: THE CITY OF ANOKA
Peter M. Belong as Mayor
Mark Nagel as City Manager

STATE OF MINNESOTA
 COUNTY OF ANOKA
 The foregoing instrument was acknowledged before me this 24 day of August, 1994, by Robert W. Schmidt as Vice Pres. and Thomas P. Lehoux as Treas. of The Astra Projects, Incorporated, a Minnesota Corporation, on behalf of the Corporation.
Diana Leo Remberg
 Notary Public
 Hennepin County, Minnesota
 My Commission expires Jan 8, 2000

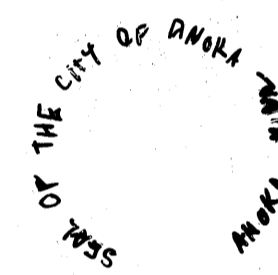
STATE OF MINNESOTA
 COUNTY OF ANOKA
 The foregoing instrument was acknowledged before me this 17th day of OCTOBER, 1994, by Peter M. Belong as MAYOR and MARK NAGEL as CITY MANAGER of The City of Anoka, a Minnesota Municipal Corporation, on behalf of the City.
Robert W. Hines
 Notary Public
 ANOKA County, Minnesota
 My Commission expires FEB. 13, 1998

I hereby certify that I have surveyed and platted the property described on this plat as MINERAL POND 6TH ADDITION; that this plat is a correct representation of said survey; that all monuments have been correctly placed in the ground as shown on the plat; that all distances are correctly shown on the plat in feet and hundredths of a foot; that the outside boundary lines are correctly designated on the plat; and that there are no wetlands or public highways to be designated on the plat other than as shown thereon.
Raymond A. Prasch
 Raymond A. Prasch, Licensed Land Surveyor
 Minnesota License No. 6743

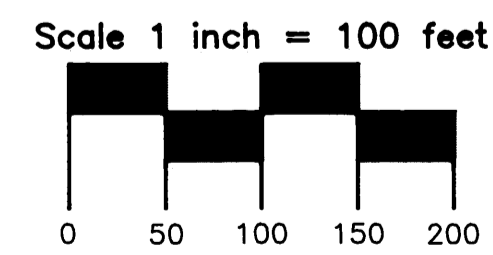
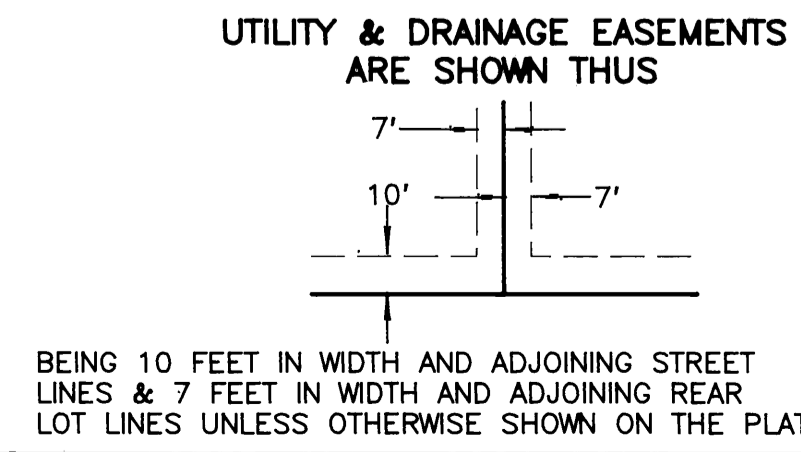
STATE OF MINNESOTA
 COUNTY OF HENNEPIN
 The foregoing instrument was acknowledged before me this 22nd day of August, 1994, by Raymond A. Prasch, Licensed Land Surveyor
Theresa Prasch
 Theresa Prasch, Notary Public
 Hennepin County, Minnesota
 My Commission expires November 19, 1996

This plat of MINERAL POND 6TH ADDITION was approved by the Planning Commission of the City of Anoka at the regular meeting held this 17th day of August, 1994.
 Signed: Robert W. Schmidt, Chairman
 Attest: Melinda Coleman, Secretary
 CITY OF ANOKA

We hereby certify that the City Council of the City of Anoka, Anoka County, Minnesota duly accepted and approved the plat of MINERAL POND 6TH ADDITION at a regular meeting thereof held this 15th day of August, 1994. If applicable, the written comments and recommendations of the Commissioner of Transportation and the County Highway Engineer have been received by the City or the prescribed 30 day period has elapsed without receipt of such comments and recommendations, as provided by Minnesota Statutes, Section 505.03, subd. 2.
 Signed: Peter M. Belong, Mayor
 Attest: Mark Nagel, Clerk
 Checked and approved this 14th day of Nov., 1994
Merlyn D. Anderson, Anoka County Surveyor



I HEREBY CERTIFY THAT THE CURRENT AND DELINQUENT TAXES ON THE LANDS DESCRIBED WITHIN ARE PAID AND THE TRANSFER IS ENTERED
November 16, 1994
Donell M. Sawyer
 DEPUTY PROPERTY TAX ADMINISTRATOR



THE NORTH LINE OF THIS PLAT BETWEEN THE NORTHWEST CORNER OF OUTLOT A AND THE NORTHEAST CORNER OF OUTLOT A HAS A ASTRONOMIC BEARING OF S 89°22' 51" E
 For the purpose of this Plat the north line of OUTLOT D MINERAL POND ADDITION is assumed to bear N 89°53' 44" W
 ○ - DENOTES IRON MONUMENT

362026
 Office of REGISTRAR OF TITLES
 STATE OF MINNESOTA
 COUNTY OF ANOKA
 I hereby certify that the foregoing instrument was filed in the office of the Registrar of Titles at 11:55 on NOV 16 1994
Katherine Bein
 Registrar of Titles