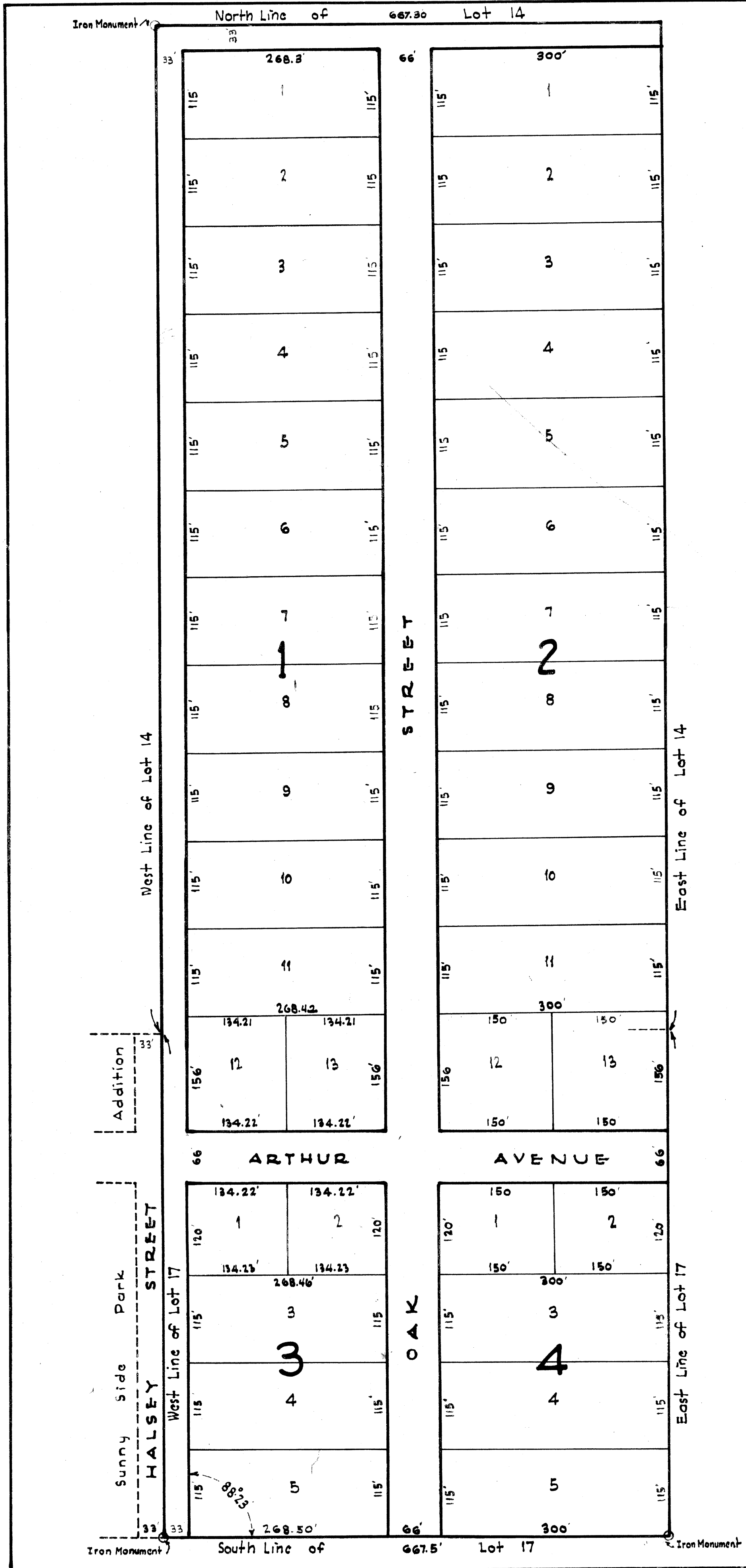


Original



MINNESOTA PARK

ANOKA COUNTY, MINNESOTA

Know All Men By These Presents: That we, R. W. Ripberger Inc., a Minnesota Corporation, owners and proprietors of the following described property situate in the County of Anoka, state of Minnesota, to wit: West one-half (West 1/2) of Northeast one-quarter of Northeast one-quarter (N.E. 1/4 of N.E. 1/4) now known as Lot Fourteen (14) Auditors Subdivision Number one hundred five (105) Anoka County, Minnesota and the Northwest one-quarter of the Southeast one-quarter of Northeast one-quarter (N.W. 1/4 of S.E. 1/4 of N.E. 1/4) now known Lot Seventeen (17) said Auditors Subdivision all in Section 25 Township thirty-one (31) Range twenty-four (24): have caused the same to be surveyed and platted as "Minnesota Park" and do hereby donate and dedicate to the public use forever the roads as shown on the annexed plat.

In Witness Whereof we have hereunto set our hands and seals this 7th day of October, 1950 A.D.

Witness: Francis A. Mahlum
Mabel M. Mickelson
Francis A. Mahlum
Mabel M. Mickelson

Signed: R. W. Ripberger
 President
R. W. Ripberger
 Secretary & Treasurer
 R. W. Ripberger Incorporated

State of Minnesota } s.s.
 County of Anoka }

On this 7th day of October, 1950 A.D. before me a Notary Public within and for said County personally appeared W. H. Ripberger and R. W. Ripberger to me personally known who being by me each duly sworn did say that they are respectively President and Secretary-Treasurer of R. W. Ripberger Inc., the Corporation named in the foregoing instrument; that the seal affixed to said instrument is the corporate seal of said corporation and that the said instrument was signed and sealed in behalf of said corporation by authority of its Board of Directors and the said W. H. Ripberger and R. W. Ripberger acknowledged said instrument to be the free act and deed of said corporation.

State of Minnesota } s.s.
 County of Anoka }

Francis A. Mahlum
 Notary Public, Hennepin County, Minn.
 My Commission Expires May 20, 1953.

I hereby certify that I have surveyed the property described in this plat as "Minnesota Park"; that this plat is a true representation of said survey; that the outside boundary lines are correctly designated; that all distances are correctly shown in feet and decimals of a foot; that monuments for the guidance of future surveys have been correctly placed in the ground as shown on the plat; that the topography of the land is correctly shown on the plat and that there are no wet lands or public highways other than as shown thereon.

Wayne Ridge
 Surveyor

Above certificate subscribed and sworn to before me this 5 day of October, 1950 A.D.

O. M. Hollom
 Notary Public, Anoka County, Minn.
 My Commission Expires May 12, 1956.

This plat was approved and accepted by the Honorable Board of County Commissioners of the County of Anoka, Minnesota at a regular meeting held this 9th day of October, 1950 A.D.

W. S. Stack
 Chairman, Board of County Commissioners

E. G. Carlson
 County Auditor

By W. S. Stack
 County Attorney
 Anoka County

This plat was approved as to form and execution on this 10th day of October, 1950.

W. S. Stack
 County Attorney
 Anoka County

This is to certify that this plat of "Minnesota Park" was approved by the Planning and Zoning Commission and by the Town Board of Township of Anoka in Anoka County, Minnesota at a regular meeting held this 7th day of October, 1950.

Ray T. Hudson
 Chairman, Town of Anoka
Paul J. Junt
 Clerk, Town of Anoka

136805
 OFFICE OF REGISTER OF DEEDS,
 STATE OF MINNESOTA, COUNTY OF ANOKA } s.s.
 I hereby certify that the within instrument was filed in this office for record on the 17th day of OCTOBER, 1950 A.D. 1950 at 11 o'clock A.M., and was duly recorded in Book 2, page 25.

Lucas Brandell
 Register of Deeds
 By Jean Seva, Deputy

TAXES PAID

This 17th day of October, 1950
E. G. Carlson
 Auditor, Anoka County, Minn.
 By W. S. Stack

I hereby certify that taxes for the year 1949 on the lands described within are paid

Walter D. Powers
 County Treasurer
 By W. S. Stack