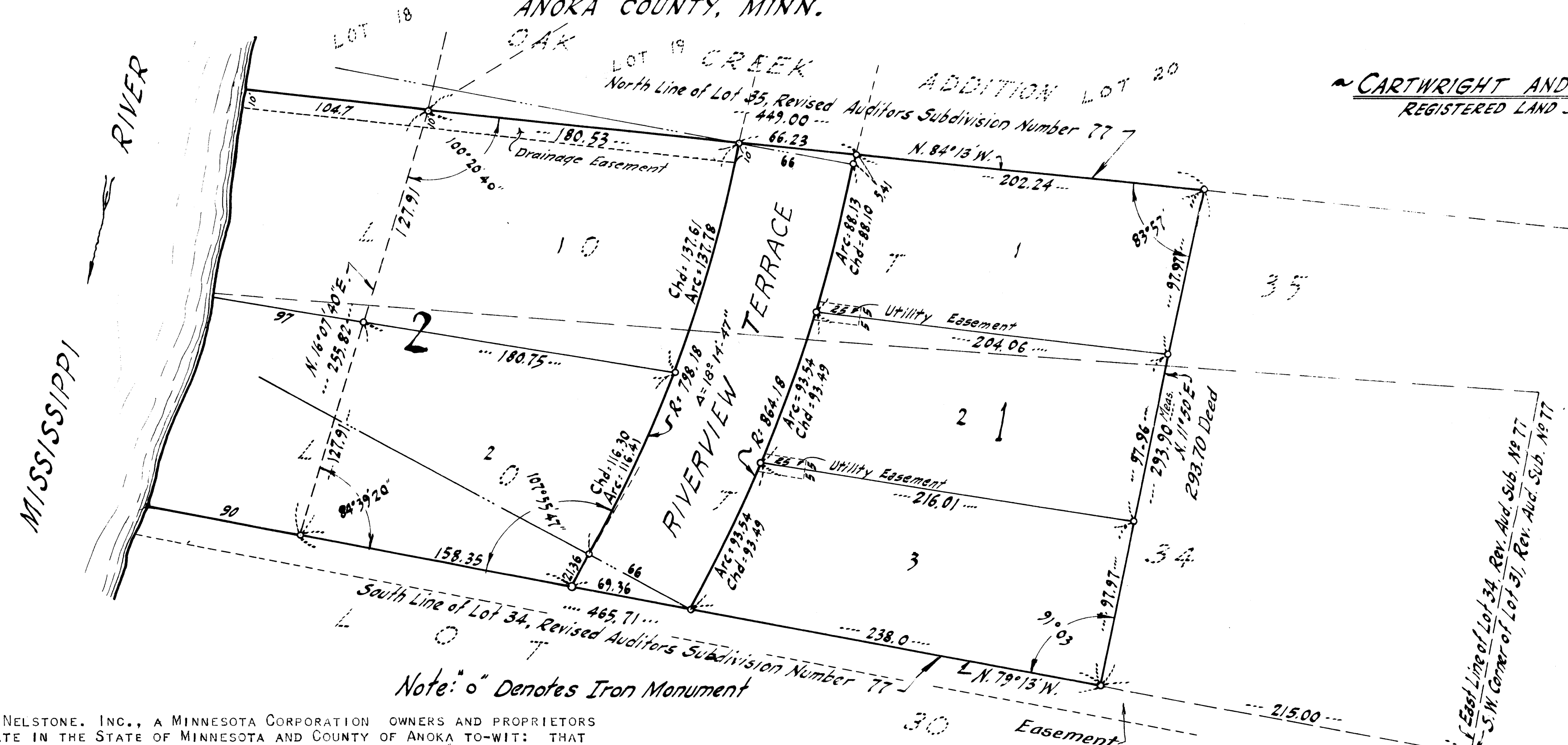
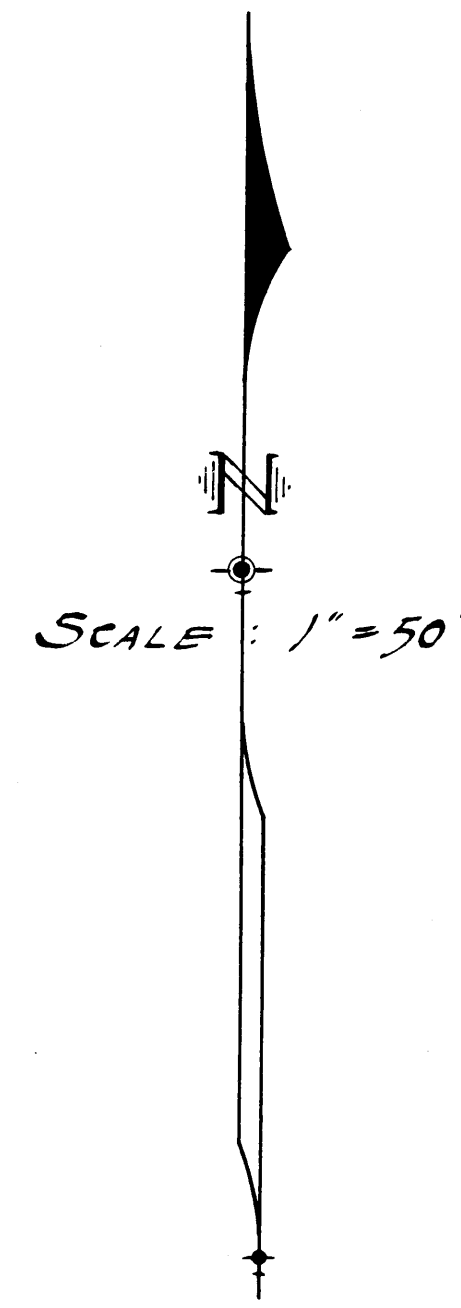


MISSISSIPPI VIEW

CITY OF FRIDLEY
ANOKA COUNTY, MINN.

CARTWRIGHT AND OLSON
REGISTERED LAND SURVEYORS



Note: "o" Denotes Iron Monument

KNOW ALL MEN BY THESE PRESENTS: THAT WE, NELSTONE, INC., A MINNESOTA CORPORATION OWNERS AND PROPRIETORS OF THE FOLLOWING DESCRIBED PROPERTY SITUATE IN THE STATE OF MINNESOTA AND COUNTY OF ANOKA TO-WIT: THAT PART OF LOTS 34 AND 35, REVISED AUDITOR'S SUBDIVISION NUMBER 77, ANOKA COUNTY, MINNESOTA, ACCORDING TO THE PLAT THEREOF ON FILE AND OF RECORD IN THE OFFICE OF THE REGISTER OF DEEDS, ANOKA COUNTY, MINNESOTA, LYING WEST OF THE FOLLOWING DESCRIBED LINE; COMMENCING AT A POINT ON THE SOUTH LINE OF SAID LOT 34 DISTANT 215.0 FEET NORTH 79 DEGREES, 13 MINUTES WEST ALONG THE SOUTH LINE OF SAID LOT 34 FROM THE SOUTHWEST CORNER THEREOF, WHICH CORNER IS ALSO THE SOUTHWEST CORNER OF LOT 31 OF SAID REVISED AUDITOR'S SUBDIVISION NUMBER 77; THENCE NORTH 11 DEGREES 50 MINUTES EAST A DISTANCE OF 293.7 FEET, MORE OR LESS, TO THE NORTH LINE OF SAID LOT 35. HAVE CAUSED THE SAME TO BE SURVEYED AND PLATTED AS MISSISSIPPI VIEW, AND DO HEREBY DONATE AND DEDICATE TO THE PUBLIC FOR PUBLIC USE FOREVER THE TERRACE AS SHOWN ON THE ANNEXED PLAT, ALSO SUBJECT TO DRAINAGE AND UTILITY EASEMENTS AS SHOWN ON THE ANNEXED PLAT. IN WITNESS WHEREOF SAID NELSTONE, INC. HAVE CAUSED THESE PRESENTS TO BE SIGNED BY ITS PROPER OFFICERS AND ITS CORPORATE SEAL TO BE HEREUNTO AFFIXED THIS 24TH DAY OF APRIL A.D., 1958.

I HEREBY CERTIFY THAT I HAVE SURVEYED AND PLATTED THE LAND DESCRIBED IN THE DEDICATION ON THIS PLAT AS MISSISSIPPI VIEW; THAT THIS PLAT IS A CORRECT REPRESENTATION OF SAID SURVEY; THAT ALL DISTANCES ARE CORRECTLY SHOWN ON SAID PLAT IN FIGURES DENOTING FEET AND DECIMALS OF A FOOT; THAT THE MONUMENTS FOR THE GUIDANCE OF FUTURE SURVEYS HAVE BEEN CORRECTLY PLACED IN THE GROUND AS SHOWN ON SAID PLAT; THAT THE TOPOGRAPHY OF THE LAND IS CORRECTLY SHOWN ON SAID PLAT; THAT THE OUTSIDE BOUNDARIES OF THE PLAT ARE CORRECTLY DESIGNATED ON SAID PLAT; AND THAT THERE ARE NO WET LANDS OR PUBLIC HIGHWAYS TO BE DESIGNATED ON SAID PLAT OTHER THAN ARE SHOWN THEREON.

IN THE PRESENCE OF:
 _____ AND Virginia M. Hallgren
 _____ AND Virginia M. Hallgren

SIGNED:
 NELSTONE, INC.
 BY Marvin J. Nelson ITS PRESIDENT
 MARVIN J. NELSON
 BY _____ ITS SEC. TREAS.
 EVELYN M. NELSON

STATE OF MINNESOTA) ss
 COUNTY OF HENNEPIN)

ABOVE CERTIFICATE SUBSCRIBED AND SWORN TO BEFORE ME, A NOTARY PUBLIC WITHIN AND FOR SAID COUNTY AND STATE, ON THIS 14TH DAY OF APRIL A.D. 1958.

George A. Cartwright
 REGISTERED LAND SURVEYOR, MINNESOTA REG. NO. 1983

STATE OF MINNESOTA) ss
 COUNTY OF ANOKA
 ON THIS 24TH DAY OF APRIL A.D., 1958, BEFORE ME A NOTARY PUBLIC WITHIN AND FOR SAID COUNTY AND STATE, PERSONALLY APPEARED MARVIN J. NELSON AND EVELYN M. NELSON, TO ME PERSONALLY KNOWN, WHO BEING BY ME DULY SWORN, DID SAY THAT THEY ARE THE PRESIDENT AND SECRETARY-TREASURER RESPECTIVELY OF NELSTONE, INC., THE CORPORATION NAMED IN THE FOREGOING INSTRUMENT; THAT THE SEAL AFFIXED TO SAID INSTRUMENT IS THE CORPORATE SEAL OF SAID CORPORATION; AND THAT SAID INSTRUMENT WAS SIGNED AND SEALED IN BEHALF OF SAID CORPORATION BY AUTHORITY OF ITS BOARD OF DIRECTORS, AND SAID MARVIN J. NELSON AND EVELYN M. NELSON ACKNOWLEDGED SAID INSTRUMENT TO BE THE FREE ACT AND DEED OF SAID CORPORATION.

Norman C. Hjium
 NOTARY PUBLIC, HENNEPIN COUNTY, MINNESOTA
 MY COMMISSION EXPIRES _____
 Notary Public, Hennepin County, Minn.
 My Commission Expires Oct. 14, 1961.

WE HEREBY CERTIFY THAT THE CITY COUNCIL OF THE CITY OF FRIDLEY, ANOKA COUNTY, MINNESOTA, DULY ACCEPTED AND APPROVED THE ANNEXED PLAT OF MISSISSIPPI VIEW AT A REGULAR MEETING THEREOF HELD THIS 24TH DAY OF July A.D. 1958.

 NOTARY PUBLIC, ANOKA COUNTY, MINNESOTA
 MY COMMISSION EXPIRES _____

TAXES PAID
 This plat was filed in this office for record on SEP 2 9 1958
 Auditor, Anoka County, Minn.

OFFICE OF REGISTER OF DEEDS
 STATE OF MINNESOTA, COUNTY OF ANOKA

By Hertrude Skinner
 Clerk

Frank C. La Grange, Jr.
 Mayor
Supreme Mishkinic
 Clerk

I HEREBY CERTIFY THAT TAXES FOR THE YEAR 1957 ON THE LANDS DESCRIBED WITHIN ABE 1957

Kalter D. Bowers
 County Treasurer
 By M. N. ... Deputy