

O.O. Rhone

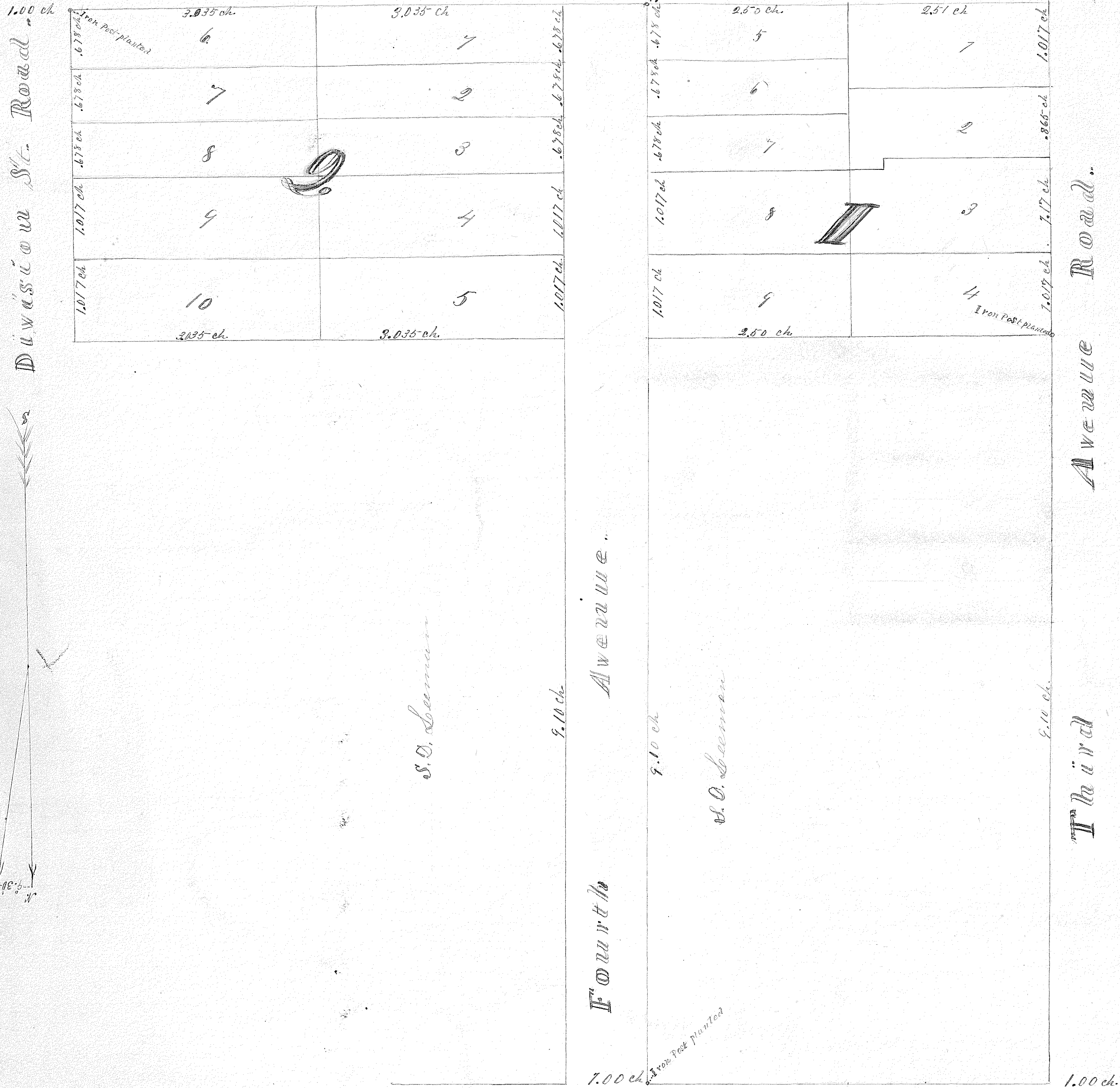
Divisow St. Road

Avenue Road

Avenue

Fourth

Washington Street



State of Minnesota }  
 County of Anoka } ss.  
 City of Anoka }  
 The above plat being a  
 plat of Moberg's Addition to Anoka was  
 approved by the council of the city of Anoka  
 at a meeting held by them on the 16<sup>th</sup> day of  
 October A.D. 1883  
 W. Miller  
 City Clerk

State of Minnesota }  
 County of Anoka } ss.  
 I, A.H. Reed the  
 person who surveyed and platted the annexed  
 plat of Moberg's Addition to Anoka, do hereby  
 certify the said plat is a true and cor-  
 rect plat of said Addition as made by  
 me September 19<sup>th</sup> A.D. 1883.  
 A.H. Reed  
 Co. Surveyor

State of Minnesota }  
 County of Anoka }  
 Be it known that on this 24<sup>th</sup> day of September  
 A.D. 1883 before me personally appeared Samuel D. Lerman, and  
 Mary A. Lerman, his wife, John M. Edes and Celia C. Edes, his  
 wife, John Mayall and Susan Mayall, his wife, the proprietors  
 of the within plat made by A.H. Reed Surveyor, and they each severally  
 acknowledged the same to be their plat and that they caused the same  
 to be platted as their free act and deed for the uses and purposes therein  
 expressed.

County Clerk  
 Notary Public  
 Minn.

John Mayall  
 Susan Mayall  
 S. D. Lerman  
 Mary A. Lerman  
 John M. Edes  
 Celia C. Edes

Bk. 18.  
**MOBERG'S ADDITION**  
 To  
**ANOKA.**  
 surveyed and Platted  
 BY  
 A.H. Reed.  
 Sept. 1883.  
 comprising a part of lot  
 one Section 7. Town 31 N. Range  
 24. W.

Office of Register of Deeds  
 Anoka, Minn.  
 This plat was filed in this Office for Record on  
 the 2<sup>nd</sup> day of October, A.D. 1883 and was duly recorded  
 in Book 18 of Anoka, Minn.  
 C. D. Green  
 Register of Deeds