

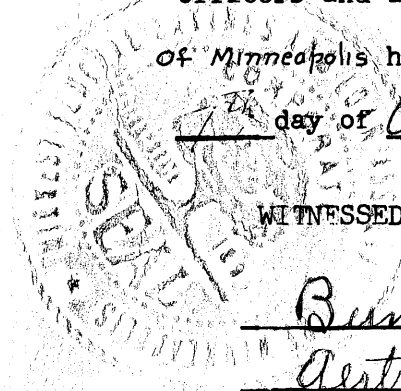
MORNINGSIDE 4TH ADDITION

CITY OF ANOKA ANOKA COUNTY, MINNESOTA

HEDLUND ENGINEERING SERVICES

ENGINEERS AND LAND SURVEYORS

KNOW ALL MEN BY THESE PRESENTS, that Village Builders Inc., a Minnesota Corporation, Purchasers Under Option and Midwest Federal Savings & Loan Association of Minneapolis, a United States Corporation, fee Owner of the following described property situated in the County of Anoka, State of Minnesota to wit; That part of the North 55 Acres of the North Half (N $\frac{1}{2}$) of the Southeast Quarter (SE $\frac{1}{4}$) of Section 31, Township 32, Range 24 described as lying westerly of Morningside Addition, North of Morningside 3rd Addition and northeasterly of Morningside 2nd Addition according to the plats thereof on file and of record in the office of the Register of Deeds, Anoka County, Minnesota and also that part of the South 53 1/3 Acres of the Northeast Quarter (NE $\frac{1}{4}$) of said Section 31 as determined by the south line of Faddler's 1st, 2nd, and 3rd Additions, and lying westerly of Morningside Addition according to the plats thereof on file and of record in said office of the Register of Deeds, excepting the North 366 feet of the West 733 feet thereof and also excepting the following described tract in said South 53 1/3 Acres and North 55 Acres of North Half (N $\frac{1}{2}$) of the Southeast Quarter (SE $\frac{1}{4}$). Commencing at a point on the west line of said South 53 1/3 Acres, distant 366 feet south of the North-west Corner thereof, thence East parallel with the North line of said South 53 1/3 Acres a distance of 645 feet to the actual point of beginning of the tract to be herein described, thence return on last described line 645 feet to said west line, thence South along said west line a distance of 480 feet, thence East measured at right angles a distance of 200 feet, thence Southeasterly along a circular curve concave to the southwest having a central angle of 41°-17'-28" and a radius of 230 feet for a distance of 165.76 feet, thence northeasterly on a line measured at right angles for a distance of 180 feet, thence northwesterly on a line measured at right angles for a distance of 135 feet, thence northeasterly on a straight line to the point of beginning, according to the Government Survey thereof. Have caused the same to be surveyed and platted as MORNINGSIDE 4TH ADDITION, and do hereby donate and dedicate to the public for the public use, forever, the Avenues, Lane, and easements for utility and drainage purposes as shown on the annexed plat. In witness whereof said Village Builders Inc. has caused these presents to be signed by its proper officers and its corporate seal to be hereunto affixed this 10th day of October 1968, A. D. and Midwest Federal Savings & Loan Association of Minneapolis have caused these presents to be signed by its proper officers and its corporate seal to be hereunto affixed this 20th day of Oct., 1968, A. D.



WITNESSED
Bernard J. Pinski
Gertrude Kenney
Marie R. Johnson
Melvina Treidel

SIGNED
MIDWEST FEDERAL SAVINGS & LOAN ASSOCIATION OF MINNEAPOLIS
by Lloyd K. Peterson vice-president
by Ruth M. Andersson ass't secretary
VILLAGE BUILDERS INC.
by Edwin E. Kauffmann president
by Richard C. Kauffmann vice-president

State of Minnesota
County of Hennepin On this 7th day of OCTOBER, 1968 A. D. before me a Notary Public within and for said County and State personally appeared LLOYD K. PETERSON and RUTH M. ANDERSSON to me personally known, who being by me each duly sworn, did say that they are respectively Vice-president and Ass't Secretary of the Midwest Federal Savings & Loan Association of Minneapolis the corporation named in the foregoing instrument, that the seal affixed to said instrument is the corporate seal of said Corporation, that said instrument was signed and sealed in behalf of said corporation by authority of its Board of Directors and said LLOYD K. PETERSON and RUTH M. ANDERSSON acknowledged said instrument to be the free act and deed of said corporation.

Gertrude Kenney my commission expires
Notary Public, Hennepin County, Minnesota
GERTRUDE KENNEY
Notary Public, Hennepin County, Minn.
My Commission Expires Oct. 5, 1972.

State of Minnesota
County of Hennepin On this 10th day of October, 1968 A.D. before me a Notary Public within and for said County and State, personally appeared Edwin E. Kauffmann and Richard C. Kauffmann to me personally known, who being by me each duly sworn, did say that they are respectively President and Vice-President of Village Builders Inc., the corporation named in the foregoing instrument, that the seal affixed to said instrument is the corporate seal of said corporation, that said instrument was signed and sealed in behalf of said corporation by authority of its Board of Directors and said Edwin E. Kauffmann and Richard C. Kauffmann acknowledged said instrument to be the free act and deed of said corporation.

Melvina Treidel my commission expires
Notary Public, Hennepin County, Minnesota

I hereby certify that I have surveyed and platted the property described on this plat as MORNINGSIDE 4TH ADDITION, that this plat is a correct representation of said survey; that all distances are correctly shown on said plat in feet and decimals of a foot; that the monuments for guidance of future surveys have been correctly placed in the ground as shown on said plat; that the outside boundary lines are correctly designated on said plat; and that there are no wetlands or public highways to be designated on said plat other than as shown thereon.

Calvin T. Hedlund
Land Surveyor, Minnesota Registration No. 5942

State of Minnesota
County of Hennepin The above certificate was subscribed and sworn to before me, a Notary Public within and for said County and State, on this 10th day of October 1968, A.D.

Melvina Treidel my commission expires
Notary Public, Hennepin County, Minnesota

The plat of MORNINGSIDE 4TH ADDITION was approved and accepted by the City Council of Anoka, Minnesota, at a regular meeting thereof held on this 13th day of May 1968, A.D.

CITY COUNCIL OF THE CITY OF ANOKA, MINNESOTA
by Donald H. Blum its Mayor
by Earl B. Foley its Clerk
Approved by the Planning Commission of the City of Anoka, Minnesota, this 13th day of May 1968, A.D.
Signed Carl Hennelund Chairman
Attest Merit Watson Secretary

The boundaries of this plat and the boundaries of the blocks therein have been mathematically checked and approved. No determination has been made to ascertain that the legal description agrees with said plat. Dated this 10th day of October 1968, A.D.

Roland W. Anderson
Roland W. Anderson, Anoka County Surveyor

1968
Robert J. Peterson
by D. Larson Deputy

TAXES PAID
This 10th day of Oct. 1968
Kenneth W. Campbell
Auditor, Anoka County, Minn.
Mary Beaudette Deputy

OFFICE OF REGISTER OF DEEDS
STATE OF MINNESOTA, COUNTY OF ANOKA } SS
I hereby certify that the within instrument was filed in this office for record on the 10th day of OCT 11 1968 A.D., 1968 at 4 o'clock P.M., and was duly recorded in book 3 of P.L.T.S. page 19
Fred J. Cassaday
Register of Deeds
By Margaret Russell

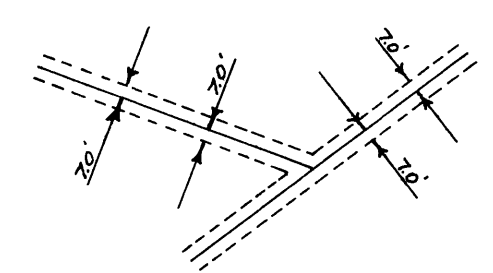
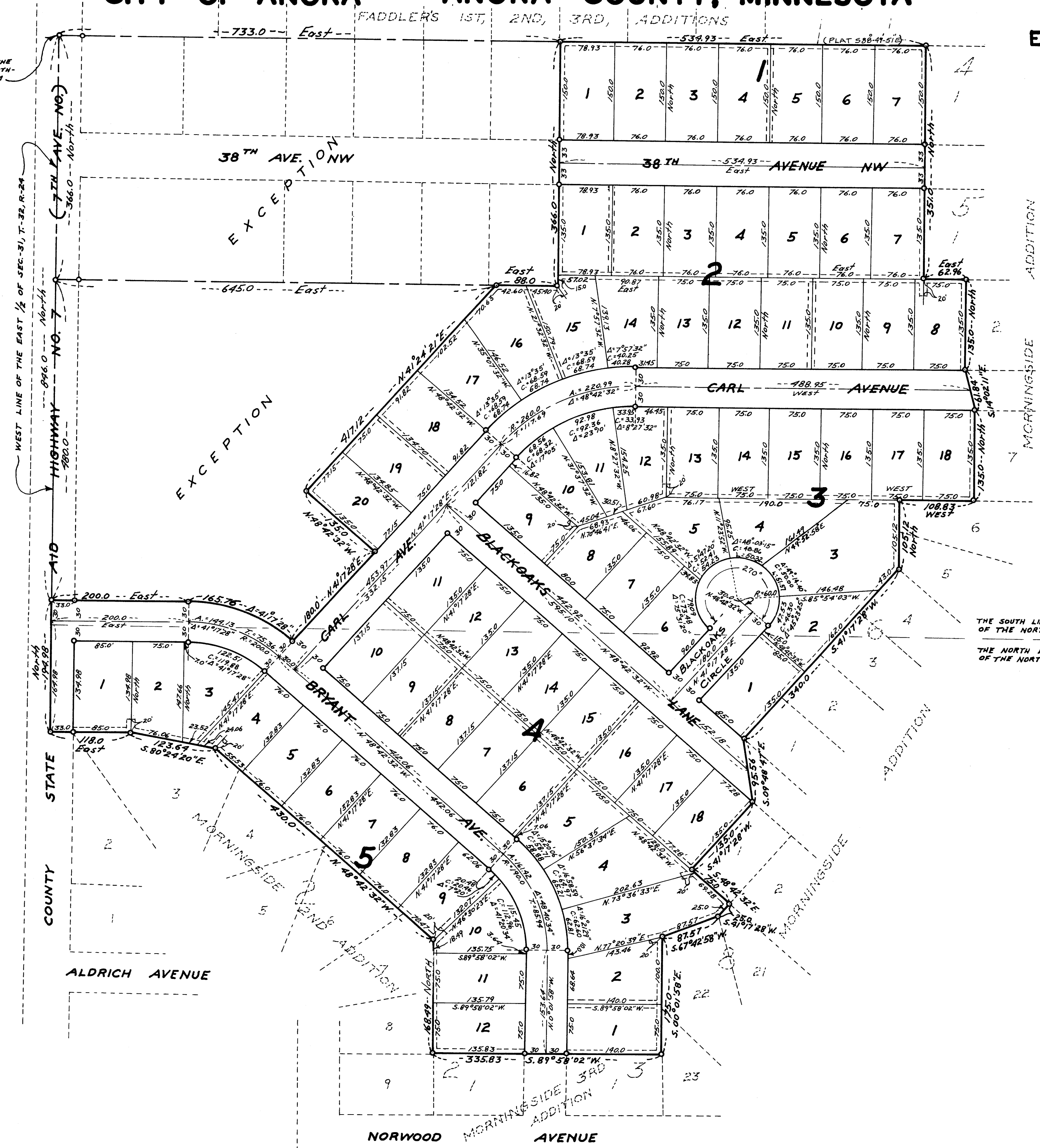
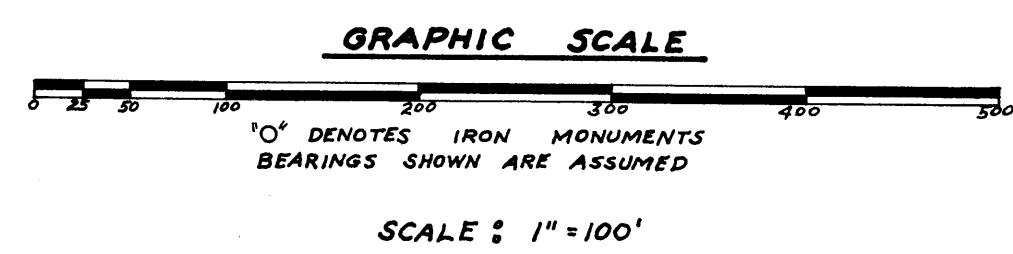
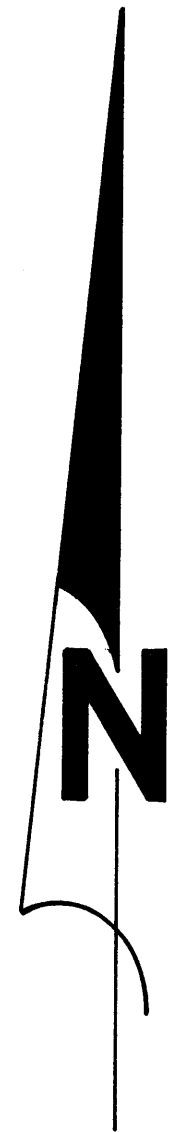
MORNINGSIDE 4TH ADDITION

CITY OF ANOKA ANOKA COUNTY, MINNESOTA

HEDLUND ENGINEERING SERVICES

ENGINEERS AND LAND SURVEYORS

THE NORTHWEST CORNER OF THE SOUTH 5 1/2 ACRES OF THE NORTH-EAST 1/4, SEC. 31, T. 32, R. 24



UTILITY AND DRAINAGE EASEMENTS SHOWN THUS BEING 70 FEET ON EACH SIDE OF LOT LINE.

THE SOUTH LINE OF THE SOUTH 5 1/2 ACRES OF THE NORTHEAST 1/4
THE NORTH LINE OF THE NORTH 5 1/2 ACRES OF THE NORTH 1/2 OF THE SOUTHEAST 1/4