

# MORNINGSIDE MEMORIAL GARDENS GARDEN OF DEVOTION ANOKA COUNTY, MINNESOTA

This is to certify that, for the purpose of establishing a cemetery, Morningside Memorial Gardens Inc., a corporation, owner and proprietor of that part of MORNINGSIDE MEMORIAL GARDENS, Anoka County, Minnesota, described as follows, to-wit:

Beginning at a point on the east line of said Morningside Memorial Gardens distant 311.38 feet north of the Southeast corner thereof; thence West and parallel with the South line of said Morningside Memorial Gardens a distance of 229.00 feet; thence deflecting 41°03'47" to the right a distance of 54.70 feet; thence on a curve to the right having a central angle of 48°05' and a radius of 191.57 feet a distance of 160.77 feet; thence tangent to said curve a distance of 12.10 feet; thence on a curve to the left having a central angle of 61°15' and a radius of 77.84 feet a distance of 83.21 feet; thence tangent to said curve a distance of 13.41 feet; thence on a curve to the right having a central angle of 88°41'16" and a radius of 45.39 feet a distance of 70.26 feet; thence on a curve to the right having a central angle of 101°208'49" and a radius of 66.73 feet a distance of 117.80 feet; thence on a curve to the right having a central angle of 11°40' and a radius of 421.10 feet a distance of 85.75 feet; thence on a curve to the right having a central angle of 12°40' and a radius of 496.53 feet a distance of 109.77 feet; thence tangent to said curve a distance of 20.78 feet; thence on a curve to the left having a central angle of 112°03'47" and a radius of 13.48 feet a distance of 26.37 feet; thence tangent to said curve and parallel with the south line of said Morningside Memorial Gardens a distance of 45.56 feet to a point on the east line of said Morningside Memorial Gardens; thence South along said East line a distance of 55.00 feet to the point of beginning.

Have, pursuant to the laws of the State of Minnesota in that behalf enacted, caused said lots to be surveyed and platted as shown on the plat; and declare the same to be and constitute a cemetery and burial place in said County and State, designated as MORNINGSIDE MEMORIAL GARDENS, GARDEN OF DEVOTION.

In testimony whereof, the said Morningside Memorial Gardens Inc. has caused these presents to be executed in its corporate name by its President and Vice-President and its corporate seal to be hereunto affixed this 27 day of April, 1963 A.D.

In Presence of  
Waverly Snell  
John W. Terpstra

Morningside Memorial Gardens, Inc.  
W. J. Stake President  
John W. Terpstra Vice-President

State of Minnesota  
County of Hennepin S.S.

On this 27<sup>th</sup> day of April, 1963 A.D., before me, a Notary Public within and for said County and State, personally appeared W. J. Stake and L. C. Beckman, to me personally known, who, being each by me duly sworn, did say that they are respectively the President and Vice-President of the corporation named in the foregoing instrument, and that the seal affixed to said instrument is the corporate seal of said corporation, and that said instrument was signed and sealed in behalf of said corporation by authority of its Board of Directors, and said W. J. Stake and L. C. Beckman acknowledged said instrument to be the free act and deed of said corporation.

Virginia M. Johnston  
Notary Public, Hennepin County, Minn.  
My Commission expires 4-18-70

I, Leo B. Shaw, Registered Land Surveyor, do hereby certify that I have surveyed the property described on this plat as Morningside Memorial Gardens, Garden of Devotion, and that said plat is a correct representation of the survey, that all distances are correctly shown on the plat, that the monuments for the guidance of future surveys have been correctly placed in the ground as shown, that the outside boundary lines are correctly designated on the plat.

Leo B. Shaw  
Leo B. Shaw, Minn. Reg. 5158

State of Minnesota  
County of Scott S.S.

On this 26<sup>th</sup> day of April, 1963 A.D., before me, a Notary Public within and for said County and State, personally appeared Leo B. Shaw, to me known to be the person described in and who executed the foregoing instrument and acknowledged that he executed the same as his own free act and deed.

Barclay R. Schuck  
Notary Public, Scott County, Minnesota  
My Commission expires 9-1-67

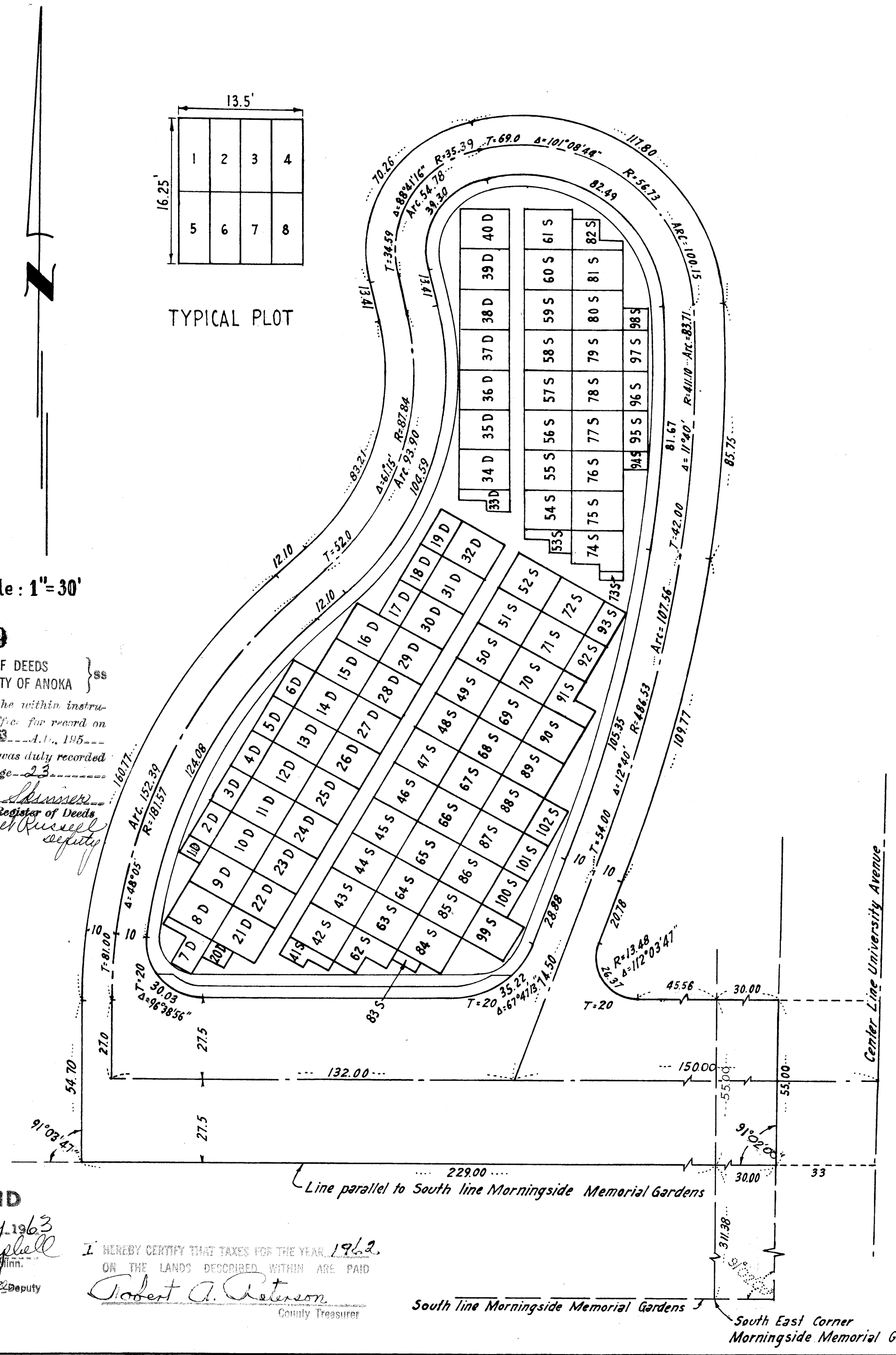
A permit having been granted Morningside Memorial Gardens Inc., to establish a cemetery on the premises hereon platted as Morningside Memorial Gardens, Garden of Devotion, said plat is hereby accepted and approved by the City Council of Coon Rapids this 6<sup>th</sup> day of May, 1963 A.D.

Joseph A. Craig Mayor  
Margaret Jessand Clerk

This Plat has been checked and approved this 6<sup>th</sup> day of May, 1963 A.D.

Robert W. Anderson  
County Surveyor Anoka County Minnesota

LEO B. SHAW-SURVEYOR SAVAGE, MINN.



247139  
OFFICE OF REGISTER OF DEEDS  
STATE OF MINNESOTA, COUNTY OF ANOKA } ss  
I hereby certify that the within instrument was filed in this office for record on the 6<sup>th</sup> day of May, 1963, at 12:30 o'clock A.M., and was duly recorded in book "7" of Plate page 23.  
Stetson Schinner  
Register of Deeds  
By Margaret Russell Deputy

TAXES PAID  
This 6<sup>th</sup> day of May, 1963  
Kenneth W. Campbell  
Auditor, Anoka County, Minn.  
Wayne A. Kasper Deputy

I HEREBY CERTIFY THAT TAXES FOR THE YEAR, 1962, ON THE LANDS DESCRIBED WITHIN ARE PAID  
Robert A. Peterson  
County Treasurer

