

MCNEIL MEADOWS

KNOW ALL MEN BY THESE PRESENTS: That David J. McNeil, single person, fee owner of the following described property situated in the State of Minnesota, County of Anoka, to wit:

Lot 1, Block 1, Longworth Addition, according to the plat thereof on file and of record in the office of the Registrar of Titles, Anoka County, Minnesota.

AND
Outlot A, Longworth Addition, according to the plat thereof on file and of record in the office of the Registrar of Titles, Anoka County, Minnesota.

Has caused the same to be surveyed and platted as McNEIL MEADOWS and does hereby dedicate to the public for public use forever the easements as shown on this plat for drainage and utility purposes only.

In witness whereof said David J. McNeil, single person, has hereunto set his hand this 13TH day of October, 2005.

By David J. McNeil
David J. McNeil

I HEREBY CERTIFY THAT THE CURRENT AND DELINQUENT TAXES ON THE LANDS DESCRIBED WITHIN ARE PAID AND THE TRANSFER IS ENTIRELY VALID.
NOV 23 2005
MAURICE J. SEVENE
PROPERTY TAX ADMINISTRATOR
BY [Signature]
DEPUTY PROPERTY TAX ADMINISTRATOR

STATE OF MINNESOTA
COUNTY OF Ramsey
The foregoing instrument was acknowledged before me this 13TH day of October, 2005, by David J. McNeil, single person.

[Signature]
Notary Public, Ramsey County, Minnesota
My Commission Expires January 31, 2009



I hereby certify that I have surveyed and platted the property described on this plat as McNEIL MEADOWS; that this plat is a correct representation of the survey; that all distances are correctly shown on the plat in feet and hundredths of a foot; that all monuments will be correctly placed in the ground as shown; that the outside boundary lines are correctly designated on said plat and that there are no wet lands as defined in Minnesota Statutes, Sec. 505.02, Subd. 1 or public highways to be designated other than as shown on said plat.

[Signature]
John A. Rengo, Land Surveyor
Minnesota License No. 25344

STATE OF MINNESOTA
COUNTY OF ANOKA
The foregoing surveyors certificate was acknowledged before me this 13TH day of October, 2005, by John A. Rengo, Land Surveyor, Minnesota License No. 25344.

[Signature]
Notary Public, Anoka County, Minnesota
My Commission Expires January 31, 2009



This plat of McNEIL MEADOWS was approved by the City Council of Blaine, Minnesota at a regular meeting thereof held this 17TH day of November, 2005, and if applicable, the written comments and recommendations of the Commissioner of Transportation and the County Highway Engineer have been received by the City or the prescribed 30 day period has elapsed without receipt of such comments and recommendations, as provided by Minnesota Statutes, Section 505.03, Subd. 2.

By [Signature] Mayor
By [Signature] Clerk

This plat has been checked and approved this 23RD day of NOVEMBER, 2005

By [Signature]
Larry D. Holm
Anoka County Surveyor

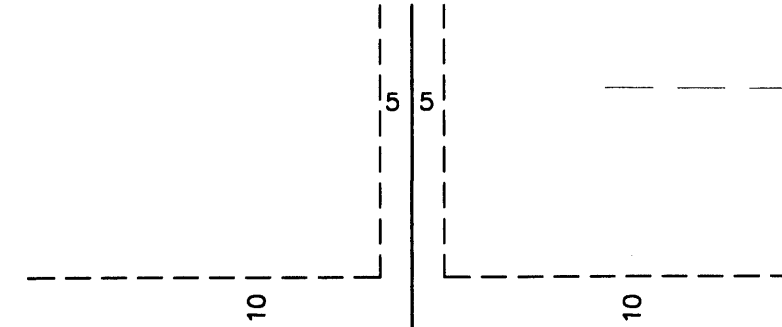
485434.001 Torrens
Office of REGISTRAR OF TITLES
STATE OF MINNESOTA
COUNTY OF ANOKA
I hereby certify that the within instrument was filed in the office of the Registrar of Titles, Anoka County, Minnesota, on this 11:13 day of Nov, 2005.
Min. Stat. Sec. 505.03, Subd. 2.
By [Signature] GKE

\$96.00

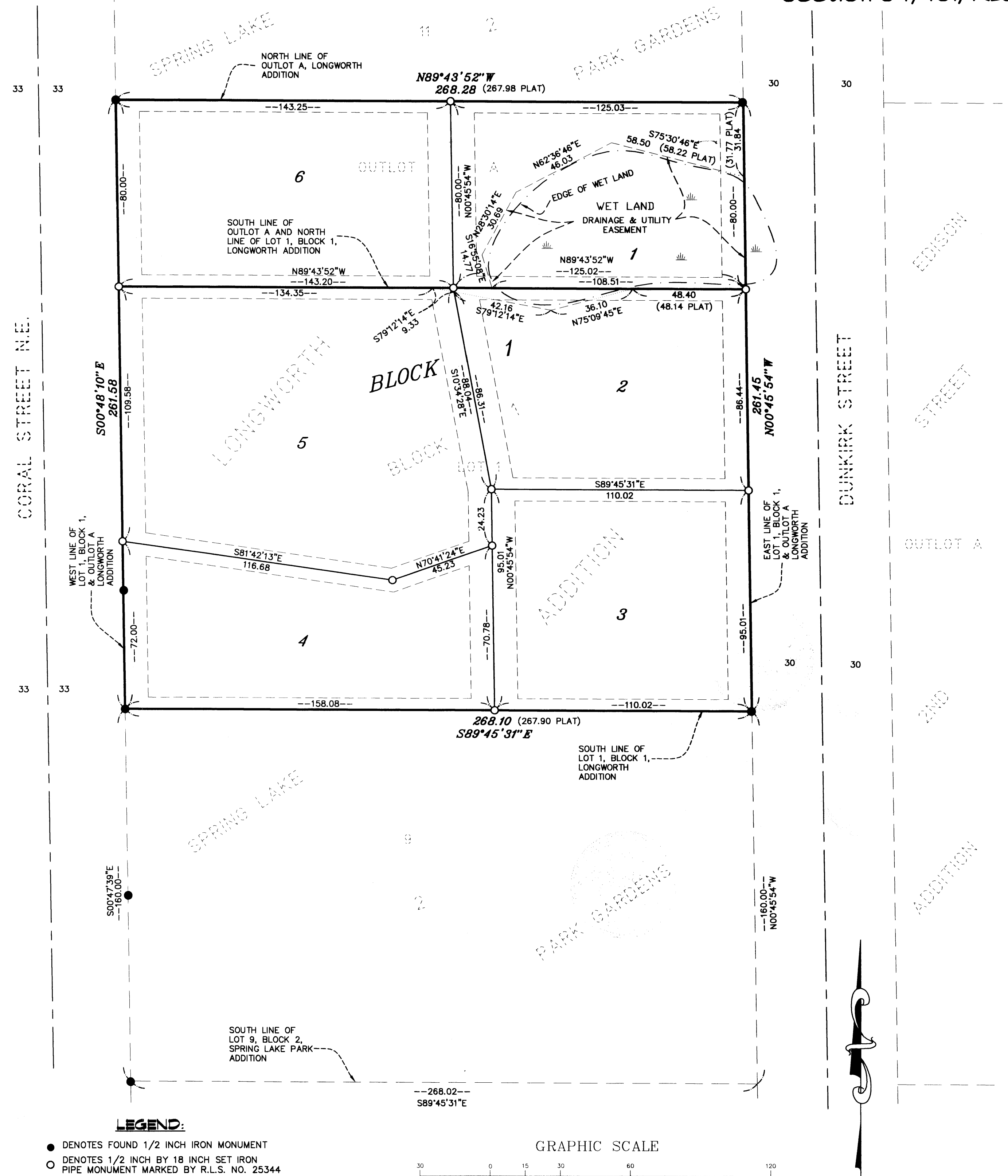
E. G. RUD & SONS, INC.
Land Surveyors



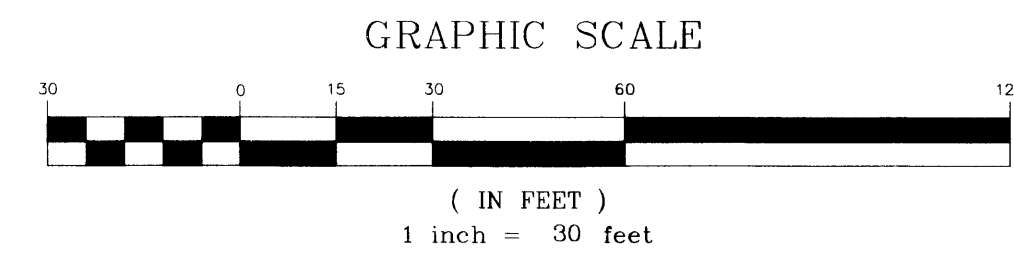
EASEMENT DETAIL:
Drainage and Utility Easements are shown thus:



Being 10 feet in width and adjoining street and rear lines, and 5 feet in width and adjoining side lot lines, unless otherwise shown on this plat.



LEGEND:
● DENOTES FOUND 1/2 INCH IRON MONUMENT
○ DENOTES 1/2 INCH BY 18 INCH SET IRON PIPE MONUMENT MARKED BY R.L.S. NO. 25344



FOR THE PURPOSES OF THIS PLAT, THE NORTH LINE OF OUTLOT A LONGWORTH ADDITION, ANOKA COUNTY, MINNESOTA, HAS AN ASSUMED BEARING OF N89°43'52"W.