

CITY OF RAMSEY
COUNTY OF ANOKA
SEC. 19, TWP. 32, RNG. 25

NAME BRAND FIRST ADDITION

KNOW ALL PERSONS BY THESE PRESENTS: That Name Brand Self Storage Ramsey LLC, a Minnesota limited liability company, owner of the following described property:

OUTLOT A, WEST RAMSEY INDUSTRIAL PARK, according to the recorded plat thereof, Anoka County, Minnesota.

Has caused the same to be surveyed and platted as NAME BRAND FIRST ADDITION and does hereby dedicate to the public for public use the drainage and utility easements as shown on this plat.

In witness whereof said Name Brand Self Storage Ramsey LLC, a Minnesota limited liability company, has caused these presents to be signed by its proper officer this 23 day of October, 2019.

NAME BRAND SELF STORAGE RAMSEY LLC

Josh Peterson
Josh Peterson, Managing Member

STATE OF MINNESOTA
COUNTY OF Sherburne

This instrument was acknowledged before me this 23 day of October, 2019 by Josh Peterson, Managing Member of Name Brand Self Storage Ramsey LLC, a Minnesota limited liability company, on behalf of the company.

Missie Tolborg
Printed Name: Missie Tolborg
Notary Public, Sherburne County, Minnesota
My Commission expires: January 31, 2023

I Craig A. Wensmann do hereby certify that his plat was prepared by me or under my direct supervision; that I am a duly Licensed Land Surveyor in the State of Minnesota; that this plat is a correct representation of the boundary survey; that all mathematical data and labels are correctly designated on this plat; that all monuments depicted on this plat have been, or will be correctly set within one year; that all water boundaries and wet lands, as defined in Minnesota Statutes, Section 505.01, Subd. 3, as of the date of this certificate are shown and labeled on this plat; and all public ways are shown and labeled on this plat.

Dated this 18th day of OCTOBER, 2019.

Craig A. Wensmann
Craig A. Wensmann, Licensed Land Surveyor
Minnesota License No. 47466

STATE OF MINNESOTA
COUNTY OF Sherburne

This instrument was acknowledged before me this 18 day of October, 2019 by Craig A. Wensmann.

Missie Lynn Tolborg
Printed Name: Missie Lynn Tolborg
Notary Public, Sherburne County, Minnesota
My Commission expires: January 31, 2023

CITY COUNCIL, CITY OF RAMSEY, MINNESOTA

This plat of NAME BRAND FIRST ADDITION was approved and accepted by the City Council of the City of Ramsey, Minnesota at a regular meeting thereof held this 23rd day of July, 2019, and said plat is in compliance with the provisions of Minnesota Statutes, Section 505.03, Subd. 2.

CITY COUNCIL, CITY OF RAMSEY, MINNESOTA

John R. ...
Mayor
Charles ...
Clerk

COUNTY SURVEYOR

I hereby certify that in accordance with Minnesota Statutes, Section 505.021, Subd. 11, this plat has been reviewed and approved this 30th day of January, 2020.

By: *Charles F. Gitzon*
Charles F. Gitzon
Anoka County Surveyor

COUNTY AUDITOR/TREASURER

Pursuant to Minnesota Statutes, Section 505.021, Subd. 9, taxes payable in the year 2020 on the land hereinbefore described have been paid. Also, pursuant to Minnesota Statutes, Section 272.12, there are no delinquent taxes and transfer entered this 30th day of January, 2020.

Jonell M. Sawyer
Jonell M. Sawyer
Property Tax Administrator
By: *...*
Deputy

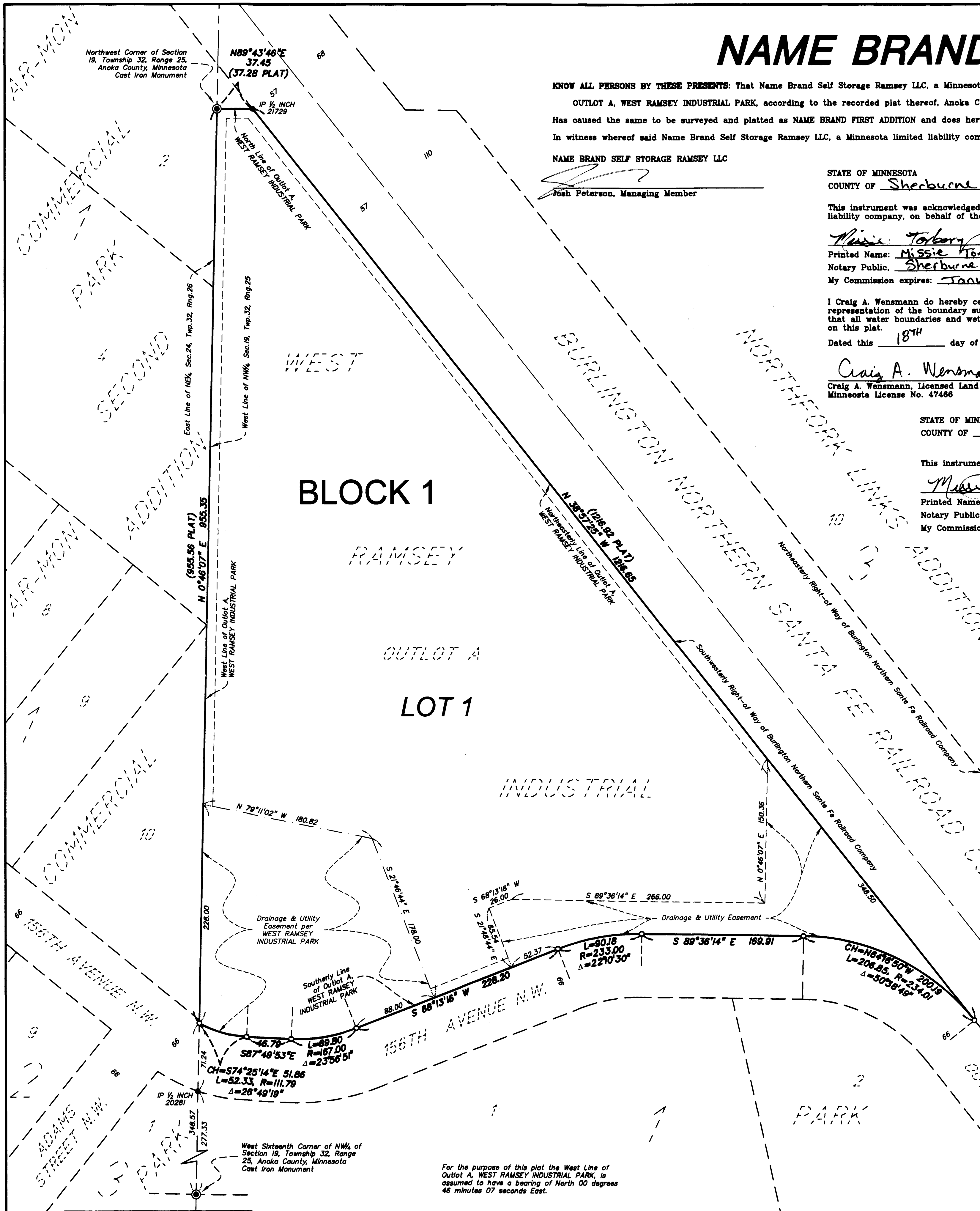
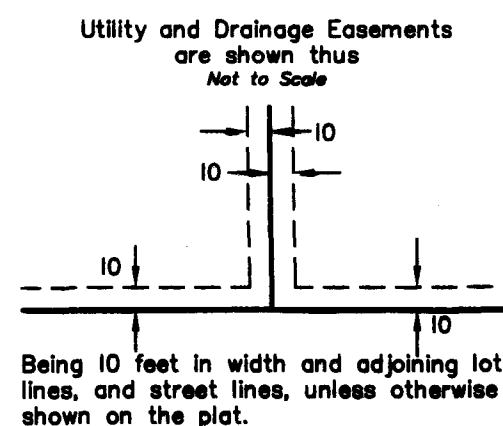
COUNTY RECORDER/REGISTRAR OF TITLES
COUNTY OF ANOKA, STATE OF MINNESOTA

I hereby certify that this plat of NAME BRAND FIRST ADDITION was filed in the office of the County Recorder/Registrar of Titles for public record on this 30th day of January, 2020, at 11:31 o'clock A.M. and was duly recorded as Document No. 2250800.001.

Jonell M. Sawyer
Jonell M. Sawyer
County Recorder/Registrar of Titles
By: *...*
Deputy

LEGEND:

- Denotes found iron monument
- Denotes 1/2 inch x 14 inch iron monument set with a plastic plug stamped R.L.S. 47466.
- ⊙ Denotes found cast iron monument
- LS 20281 Denotes Jack Bolke, LS
- LS 21729 Denotes Rick M. Blom, LS



For the purpose of this plat the West Line of Outlot A, WEST RAMSEY INDUSTRIAL PARK, is assumed to have a bearing of North 00 degrees 46 minutes 07 seconds East.