

NATIONAL SPORTS VILLAGE SECOND ADDITION

CITY OF BLAINE
COUNTY OF ANOKA
SEC. 21, T. 31, R. 23

KNOW ALL PERSONS BY THESE PRESENTS: That Minneapolis-Saint Paul Metropolitan Airports Commission, a public corporation, State of Minnesota, owner of the following described property:

Lot 1, Block 1, NATIONAL SPORTS VILLAGE, Anoka County, Minnesota

Has caused the same to be surveyed and platted as NATIONAL SPORTS VILLAGE SECOND ADDITION.

In witness whereof said Minneapolis-Saint Paul Metropolitan Airports Commission, a public corporation, State of Minnesota, has caused these presents to be signed by its proper officer this 29th day of February, 2024

SIGNED: Minneapolis-Saint Paul Metropolitan Airports Commission

SJ Porter as VP Finance Revenue Development
Samantha Porter
Print Name

STATE OF MINNESOTA

COUNTY OF Hennepin

This instrument was acknowledged before me on 29th day of February, 2024 by Samantha Porter of Minneapolis-Saint Paul Metropolitan Airports Commission, a public corporation, State of Minnesota, on behalf of the corporation.

John R. Kedrowski
John R. Kedrowski
(Print Name)
Notary Public, Dakota County, Minnesota
My Commission Expires January 31, 2025

I Leonard F. Carlson do hereby certify that this plat was prepared by me or under my direct supervision; that I am a duly Licensed Land Surveyor in the State of Minnesota; that this plat is a correct representation of the boundary survey; that all mathematical data and labels are correctly designated on this plat; that all monuments depicted on this plat have been, or will be correctly set within one year; that all water boundaries and wet lands, as defined in Minnesota Statutes, Section 505.01, Subd. 3, as of the date of this certificate are shown and labeled on this plat; and all public ways are shown and labeled on this plat.

Dated this 28th day of February, 2024.

Leonard F. Carlson
Leonard F. Carlson, Licensed Land Surveyor
Minnesota License No. 44890

STATE OF MINNESOTA

COUNTY OF Hennepin

This instrument was acknowledged before me this 28th day of February, 2024 by Leonard F. Carlson.

Maria J. Way
Maria J. Way
(Print Name)
Notary Public, Dakota County, Minnesota
My Commission Expires January 31, 2025

CITY COUNCIL, CITY OF BLAINE, MINNESOTA

This plat of NATIONAL SPORTS VILLAGE SECOND ADDITION was approved and accepted by the City Council of the City of Blaine, Minnesota at a regular meeting thereof held this 4th day of March, 2024, and said plat is in compliance with the provisions of Minnesota Statutes, Section 505.03, Subd. 2.

City Council, City of Blaine, Minnesota

By: [Signature] Mayor By: [Signature] Clerk

ANOKA COUNTY SURVEYOR

I hereby certify that in accordance with Minnesota Statutes, Section 505.021, Subd. 11, this plat has been reviewed and approved this 17th day of March, 2024.

David M. Ziegler
David M. Ziegler
Anoka County Surveyor

ANOKA COUNTY AUDITOR/TREASURER

Pursuant to Minnesota Statutes, Section 505.021, Subd. 9, taxes payable in the year 2024 on the land hereinbefore described have been paid. Also, pursuant to Minnesota Statutes, Section 272.12, there are no delinquent taxes and transfer entered this 12th day of March, 2024.

Pamela J. LeBlanc
Pamela J. LeBlanc
Property Tax Administrator

By Rose A. Tendoh, Deputy

ANOKA COUNTY RECORDER/REGISTRAR OF TITLES

County of Anoka, State of Minnesota

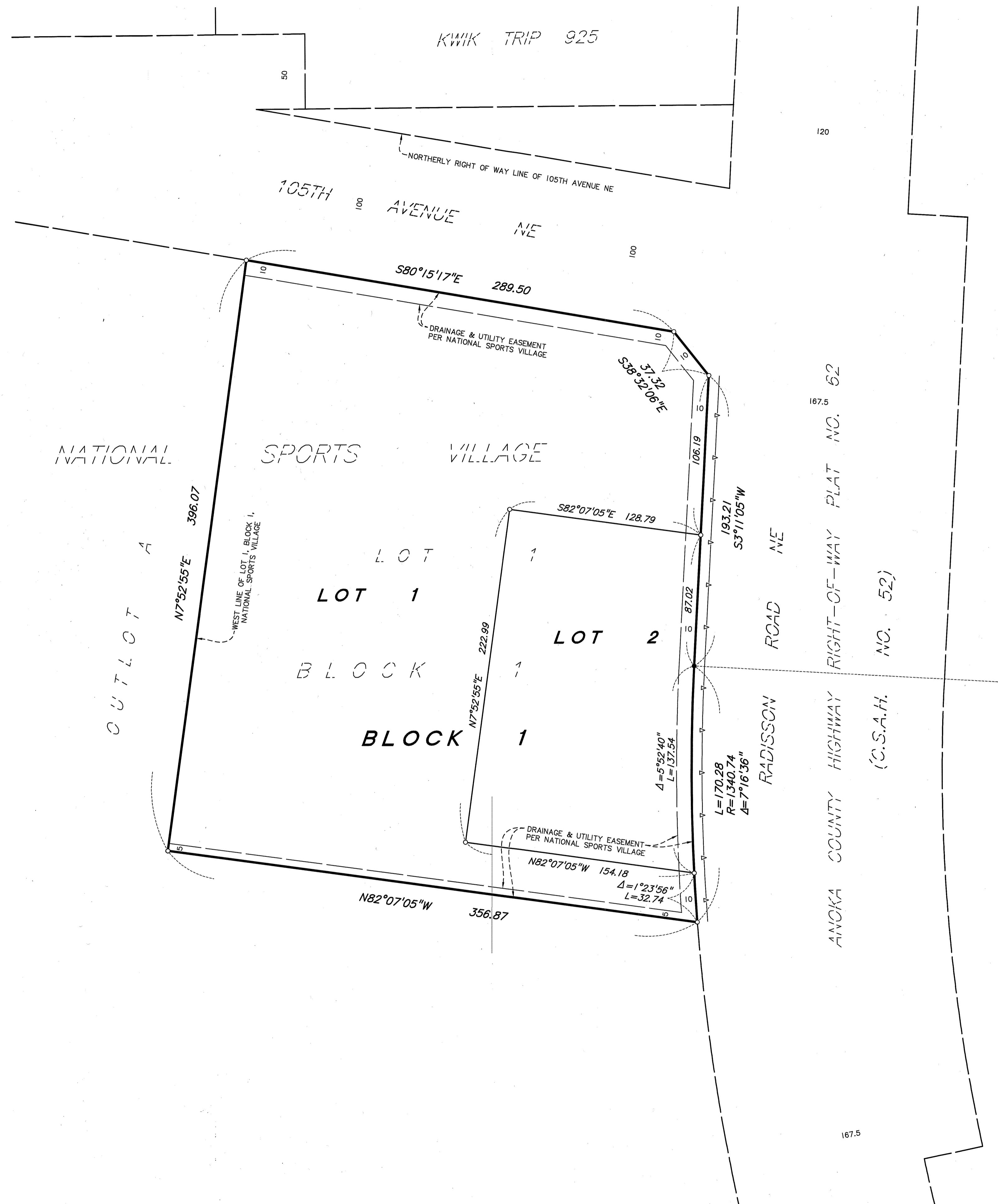
I hereby certify that this plat of NATIONAL SPORTS VILLAGE SECOND ADDITION was filed in the office of the County Recorder/Registrar of Titles for public record on this 12th day of March, 2024, at 12:07 o'clock P.M. and was duly recorded as Document Number 24097531002.

Pamela J. LeBlanc
Pamela J. LeBlanc
County Recorder/Registrar of Titles

By Rose A. Tendoh, Deputy

NATIONAL SPORTS VILLAGE SECOND ADDITION

CITY OF BLAINE
COUNTY OF ANOKA
SEC. 21, T. 31, R. 23



- Denotes 1/2 inch iron pipe monument set marked with P.L.S. No. 44890
- Denotes found 3 inch Anoka County survey disk
- ▲— Denotes Right of Access dedicated to Anoka County per the plat of NATIONAL SPORTS VILLAGE

FOR THE PURPOSES OF THIS PLAT THE WEST LINE OF LOT 1, BLOCK 1, NATIONAL SPORTS VILLAGE IS ASSUMED TO BEAR $N7^{\circ}52'55''E$

