

NATURES WAY

CITY OF COON RAPIDS
COUNTY OF ANOKA

HY LAND SURVEYING, PA.
Land Surveyor

KNOW ALL MEN BY THESE PRESENTS: That Maximum Builders, Inc., a Minnesota Corporation, owner and proprietor of the following described property situated in the County of Anoka, State of Minnesota, to wit:

That part of the East 10 acres of the West 20 acres of the East 3/4 of the Northeast 1/4 of the Northwest 1/4 of Section 3, Township 31, Range 24, described as that part of the West 165 feet thereof lying North of the South 1000 feet (as measured along the East and West lines of said 10 acres), also described as Lots 32 & 33, Auditors Subdivision Number 145.

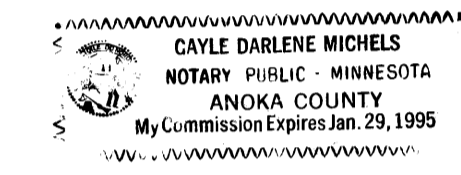
Has caused the same to be surveyed and platted as NATURES WAY and does hereby donate and dedicate to the public for public use forever the Street, and easements for utility and drainage purposes as shown on the plat. In witness whereof said Maximum Builders, Inc., a Minnesota Corporation, has caused these presents to be signed by its proper officers this 13th day of November, 1991.

Signed: MAXIMUM BUILDERS, INC.

Kevin J. Stanton, Pres.

Jeff T. Palmer, v.p.

State of Minnesota
County of Anoka The foregoing instrument was acknowledged before me this 13th day of November, 1991 by Kevin J. Stanton its President and Jeff T. Palmer, its V.P. of Maximum Builders, Inc., on behalf of said corporation.



Cayle Darlene Michels
Notary Public, Anoka County, Minnesota
My Commission Expires 1-29-95

I hereby certify that I have surveyed and platted the property described on this plat of NATURES WAY; that this plat is a correct representation of said survey; that all distances are correctly shown in feet and hundredths of a foot; that all monuments have been correctly placed in the ground as shown; that the outside boundary lines are correctly designated on said plat; and that there are no wetlands or public highways other than as shown thereon.

Milton E. Hyland
Milton E. Hyland, Licensed Land Surveyor
Minnesota License No. 20262

State of Minnesota
County of Hennepin The foregoing surveyor's certificate was acknowledged before me this 12th day of November, 1991, by Milton E. Hyland, Licensed Land Surveyor.



Ruthanne Mary Hyland
Ruthanne Mary Hyland, Notary Public, Henn. Co., MN
My Commission Expires 7-31-97

The plat of NATURES WAY was approved by the Planning and Zoning Commission of the City of Coon Rapids at a regular meeting thereof held this 18th day of July, 1991.

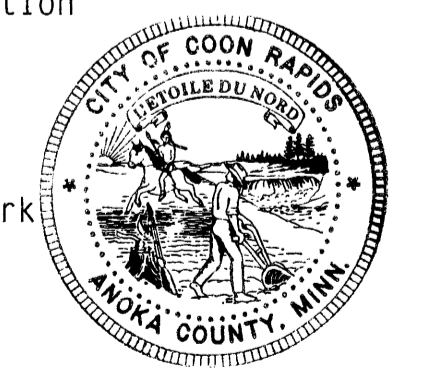
By Donna M. Naume Chairman

We hereby certify that the City Council of the City of Coon Rapids, Anoka County, Minnesota, duly accepted and approved the plat of NATURES WAY, at a regular meeting thereof held this 6th day of August, 1991. If applicable, the written comments and recommendations of the Commissioner of Transportation and the County Highway Engineer have been received by the City or the prescribed 30 day period has elapsed without receipt of such comments and recommendations, as provided by Minn. Statutes Section 505.03, Subd. 2.

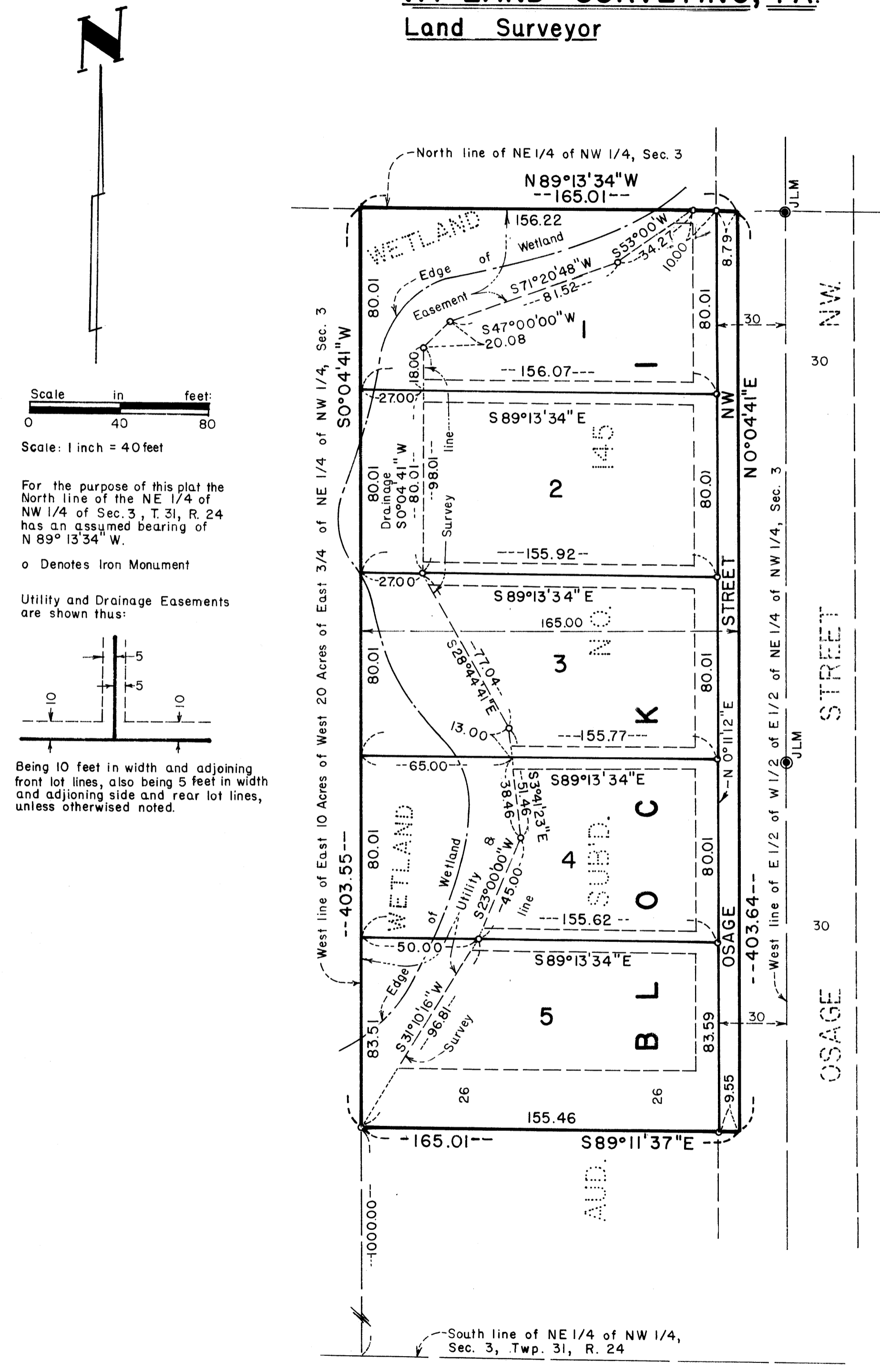
CITY COUNCIL OF COON RAPIDS, MINNESOTA

By Richard S. Reiter Mayor By Betty Backus, CM Clerk
Checked and approved this 14th day of NOVEMBER, 1991.

MERLYN D. ANDERSON
Anoka County Surveyor
Larry D. Palmer deputy



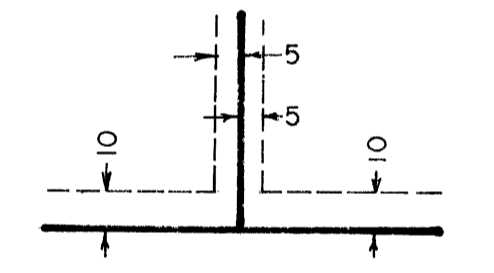
955809
OFFICE OF COUNTY RECORDER
STATE OF MINNESOTA, COUNTY OF ANOKA
I hereby certify that the within instrument was filed in this office for record on the NOV 15 A.D., 1991
12:40 o'clock P.M. and was duly recorded in book 44 of Plats, page 9
By Red O'Rourke County Recorder
Sara Kaye Deputy



For the purpose of this plat the North line of the NE 1/4 of NW 1/4 of Sec. 3, T. 31, R. 24 has an assumed bearing of N 89° 13' 34" W.

o Denotes Iron Monument

Utility and Drainage Easements are shown thus:



Being 10 feet in width and adjoining front lot lines, also being 5 feet in width and adjoining side and rear lot lines, unless otherwise noted.