

NAUMAN ACRES

CITY OF BLAINE - COUNTY OF ANOKA

KNOW ALL MEN BY THESE PRESENTS: that Blaine Owner-Storage Limited Partnership, a Minnesota Limited partnership, owner, and Milestone Blaine Fund Limited Partnership, a Minnesota Limited Partnership, mortgagee of the following described property:

Lot 10 and the north one-half of the east one-half of Lot 32, Central Avenue Acres, according to the plat thereof on file and of record in the office of the Registrar of Titles in and for Anoka County, Minnesota.

Have caused the same to be surveyed and platted as NAUMAN ACRES and do hereby donate and dedicate to the public for the public use forever the street and highway as shown on this plat.

In witness whereof said Blaine Owner-Storage Limited Partnership, a Minnesota Limited Partnership, has caused these presents to be signed by Kensington Company of Blaine, a Minnesota corporation its General Partner by its proper officer this 8th day of JANUARY, 1998.

Signed: Blaine Owner-Storage Limited Partnership
By: Kensington Company of Blaine as General Partner

Leonard G. Nauman
Leonard G. Nauman, Secretary

STATE OF MINNESOTA
COUNTY OF HENNEPIN

The foregoing instrument was acknowledged before me this 8th day of JANUARY, 1998 by Leonard G. Nauman, as Secretary of Kensington Company of Blaine, a Minnesota corporation as General Partner of Blaine Owner-Storage Limited Partnership, a Minnesota Limited Partnership on behalf of the partnership.

Billy G. Beloneck
Notary Public, Ramsay County, Minnesota
My Commission Expires JANUARY 31, 2000

In witness whereof said Milestone Blaine Fund Limited Partnership, a Minnesota Limited Partnership, has caused these presents to be signed by Milestone Land Corp., a Minnesota corporation its General Partner by its proper officer this 7th day of JANUARY, 1998.

Signed: Milestone Blaine Fund Limited Partnership
By: Milestone Land Corp. as General Partner

Curtis Gudmundson
Curtis Gudmundson, President

STATE OF MINNESOTA
COUNTY OF HENNEPIN

The foregoing instrument was acknowledged before me this 7th day of JANUARY, 1998 by Curtis Gudmundson, as President of Milestone Land Corp., a Minnesota corporation as General Partner of Milestone Blaine Fund Limited Partnership, a Minnesota Limited Partnership on behalf of the partnership.

Billy G. Beloneck
Notary Public, Ramsay County, MINNESOTA
My Commission Expires JANUARY 31, 2000

I hereby certify that I have surveyed and platted the property described on this plat as NAUMAN ACRES; that this plat is a correct representation of said survey; that all distances are correctly shown on the plat in feet and hundredths of a foot; that all monuments will be correctly placed in the ground as shown; that the outside boundary lines are correctly designated on said plat and that there are no wet lands as defined in Minnesota Statutes, Sec. 505.02, Subd. 1, or public highways to be designated other than as shown on said plat.

Ernest G. Rud
Ernest G. Rud, Land Surveyor
Minnesota Registration No. 9808

STATE OF MINNESOTA
COUNTY OF ANOKA

The foregoing Surveyors Certificate was acknowledged before me this 5th day of JANUARY, 1998, by Ernest G. Rud.

CATHLEEN R. BRUNO
NOTARY PUBLIC - MINNESOTA
My Commission Expires Jan. 31, 2000

Cathleen R. Bruno
Notary Public, Anoka County, Minnesota
My Commission Expires January 31, 2000

This plat of NAUMAN ACRES was approved by the City Council of Blaine, Minnesota at a regular meeting thereof held this 18 day of February, 1997, and if applicable, the written comments and recommendations of the Commissioner of Transportation and the County Highway Engineer have been received by the City or the prescribed 30 day period has elapsed without receipt of such comments and recommendations, as provided by Minnesota Statutes, Section 505.03, Subd. 2.

By: Tom Ryan Mayor

By: John Turval Clerk

This plat has been checked and approved this 3rd day of JUNE, 1998.

Larry D. Stein
Anoka County Surveyor



NOTARIAL SEAL
RAMSEY COUNTY MINN.

NOTARIAL SEAL
RAMSEY COUNTY MINN.

313396

I HEREBY CERTIFY THAT THE CORRECT AND
NECESSARY TAXES ON THE LAND DESCRIBED
HEREIN ARE PAID AND THE TRANSFER IS
ENTERED June 3 1998
EDWARD M. TRESKA
PROPERTY TAX ADMINISTRATOR
BY Robert S. Ramirez
DEPUTY PROPERTY TAX ADMINISTRATOR

Office of REGISTRAR OF TITLES
STATE OF MINNESOTA
COUNTY OF ANOKA
I hereby certify that the within instrument
was filed in this office on June 3, 1998
at 3:15 o'clock P.M.
Edward M. Treska, Registrar of Titles
By Katherine Bein
Deputy Registrar of Titles

E. G. RUD & SONS, INC.
Land Surveyors

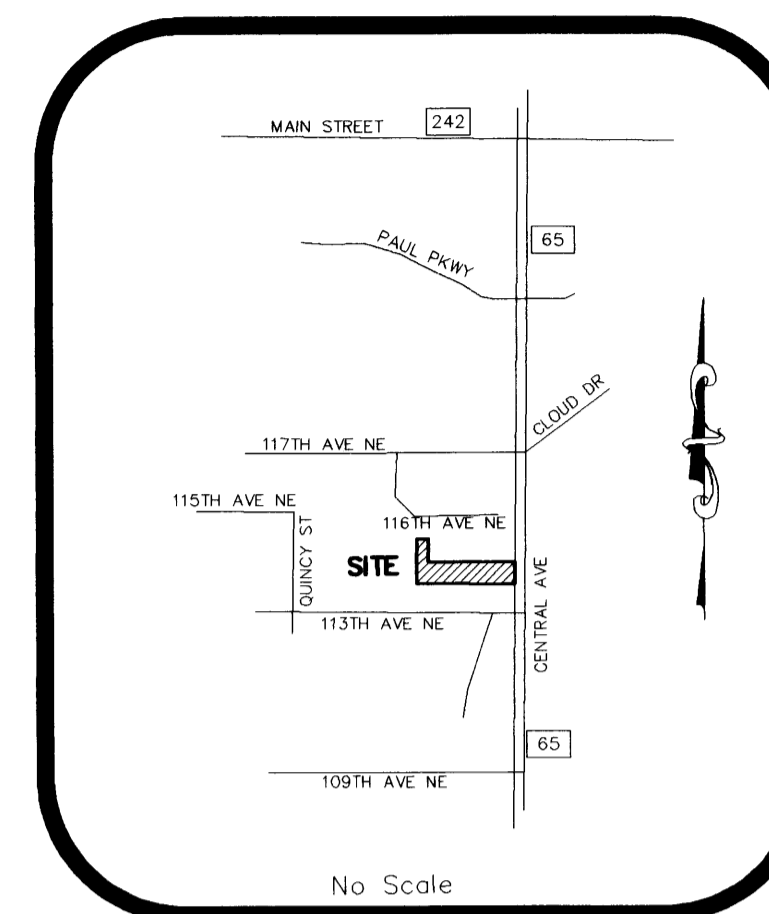
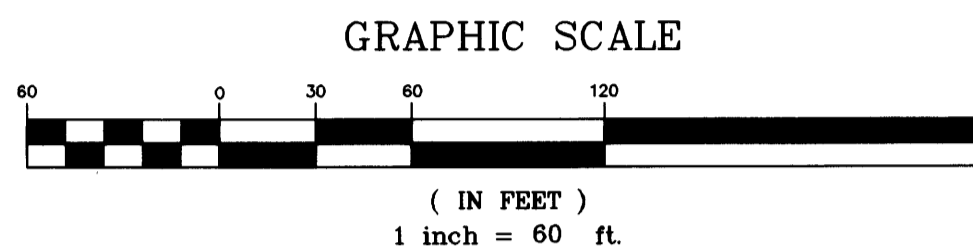


NAUMAN ACRES

CITY OF BLAINE - COUNTY OF ANOKA

N 1/4 corner of Sec. 17, T31, R23

North line of Lot 32
S89°44'17"W
165.13



VICINITY MAP
CITY OF BLAINE

West line of the E 1/2 of Lot 32
S00°08'27"W
648.88

16.5 ft. Northwestern Bell Tele. Co. easement per Doc. No. 8148

333.44 (meas.)
(331.10 plat)
S00°09'00"W

North line of Lot 10
S89°57'44"W
(1270.36 plat)
1270.58 (meas.)

651.47

75.00

522.11

OUTLOT A

AVENUE

JOHNSON ST. NE

BLOCK

ONE

STATE TRUNK HIGHWAY NO. 65
(CENTRAL AVENUE NE)
(MNDOT MONUMENTATION
PLAT NO. 02-M17)

72

22

22

50

30.00

332.40

332.49 (meas.)
(331.92 plat)

S00°18'25"W

50.00

22

22.00

72

22.00

653.54

Center of Sec. 17, T31, R23

1663.48

N00°13'25"E

East line of the NW 1/4 of Sec. 17, T31, R23

165.03
N89°46'41"E

South line of the
N 1/2 of Lot 32
N00°09'00"E
11.58

651.04

1270.14 (meas.)
(1270.02 plat)
S89°47'43"E

South line of Lot 10

- DENOTES FOUND MONUMENT
- DENOTES FOUND JLM

FOR THE PURPOSES OF THIS PLAT, THE EAST LINE OF THE NW 1/4 OF SECTION 17, TOWNSHIP 31, RANGE 23 IS ASSUMED TO HAVE A BEARING OF N 00°13'25" E.

NO MONUMENT SYMBOL SHOWN AT ANY STATUTE REQUIRED LOCATION INDICATES A PLAT MONUMENT THAT WILL BE A 1/2 INCH BY 1/4 INCH IRON PIPE SET WITHIN ONE YEAR OF THE RECORDING OF THIS PLAT, AND MARKED BY RLS 9808.

E. G. RUD & SONS, INC.
Land Surveyors

