

NE QUAD 35

KNOW ALL PERSONS BY THESE PRESENTS: That the City of Columbus, a municipal corporation, owner of the following described property:
The Northeast Quarter of the Northeast Quarter of Section 24, Township 32, Range 22, Anoka County, Minnesota, lying northerly of the northerly right-of-way line of State Highway No. 97 and easterly of Interstate Highway No. 35.

Has caused the same to be surveyed and platted as NE QUAD 35 and does hereby dedicate to the public for public use the public way and the drainage and utility easements as shown on this plat. Also dedicating to the State of Minnesota the right of access onto State Highway No. 97 as shown on this plat.

In witness whereof said City of Columbus, a municipal corporation, has caused these presents to be signed by its proper officers this 19 day of August, 2019.

CITY OF COLUMBUS
Jesse Preiner
Jesse Preiner, as Mayor
Elizabeth Mursko
Elizabeth Mursko, as City Administrator

STATE OF MINNESOTA
COUNTY OF ANOKA
This instrument was acknowledged before me this 19th day of August, 2019 by Jesse Preiner, as Mayor, and Elizabeth Mursko, as City Administrator, of the City of Columbus, a municipal corporation, on behalf of the corporation.

Jorie Ann Lemieux (signature)
Lorie Ann Lemieux (print name)
Notary Public, Minnesota
My Commission Expires 1/31/2020

I Shawn M. Kupcho do hereby certify that this plat was prepared by me or under my direct supervision; that I am a duly Licensed Land Surveyor in the State of Minnesota; that this plat is a correct representation of the boundary survey; that all mathematical data and labels are correctly designated on this plat; that all monuments depicted on this plat have been, or will be correctly set within one year; that all water boundaries and wet lands, as defined in Minnesota Statutes, Section 505.01, Subd. 3, as of the date of this certificate are shown and labeled on this plat; and all public ways are shown and labeled on this plat.

Dated this 13th day of AUGUST, 2019.
Shawn M. Kupcho
Shawn M. Kupcho, Licensed Land Surveyor
Minnesota License No. 49021

STATE OF MINNESOTA
COUNTY OF CHISAGO
This instrument was acknowledged before me this 13th day of August, 2019 by Shawn M. Kupcho.

Rachel Jo Francaan (signature)
Rachel Jo Francaan (print name)
Notary Public, Minnesota
My Commission Expires 1/31/2024

CITY COUNCIL, CITY OF COLUMBUS, MINNESOTA
This plat of NE QUAD 35 was approved and accepted by the City Council of the City of Columbus, Minnesota at a regular meeting thereof held this 21st day of April, 2019, and said plat is in compliance with the provisions of Minnesota Statutes, Section 505.03, Subd. 2.

CITY COUNCIL, CITY OF COLUMBUS, MINNESOTA
By: Jesse Preiner Mayor
By: Elizabeth Mursko Clerk

COUNTY SURVEYOR
I hereby certify that in accordance with Minnesota Statutes, Section 505.021, Subd. 11, this plat has been reviewed and approved this 21 day of Aug, 2019.

By: Charles F. Gitzen
Charles F. Gitzen
Anoka County Surveyor

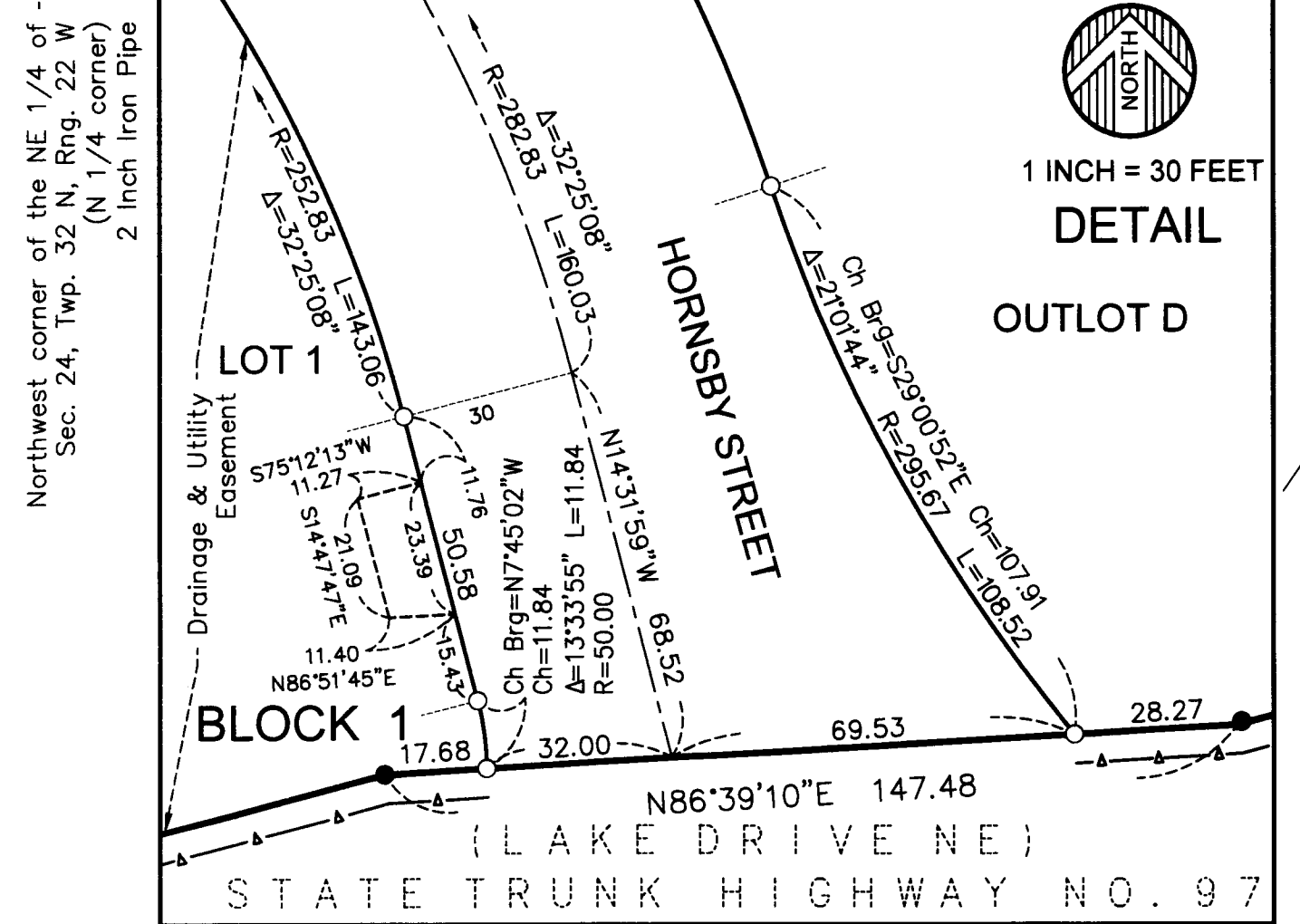
COUNTY AUDITOR/TREASURER
Pursuant to Minnesota Statutes, Section 505.021, Subd. 9, taxes payable in the year 2019 on the land hereinbefore described have been paid. Also, pursuant to Minnesota Statutes, Section 272.12, there are no delinquent taxes and transfer entered this 21 day of August, 2019.

By: Jonell M Sawyer
Jonell M Sawyer
Property Tax Administrator
By: Deputy, Deputy

COUNTY RECORDER/REGISTRAR OF TITLES
County of Anoka, State of Minnesota

I hereby certify that this plat of NE QUAD 35 was filed in the office of the County Recorder/Registrar of Titles for public record on this 21 day of August, 2019, at 11:04 o'clock P.M. and was duly recorded as Document Number 223979.001.

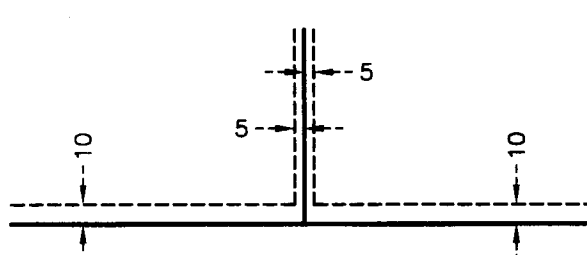
By: Jonell M Sawyer
Jonell M Sawyer
County Recorder/Registrar of Titles
By: Deputy, Deputy



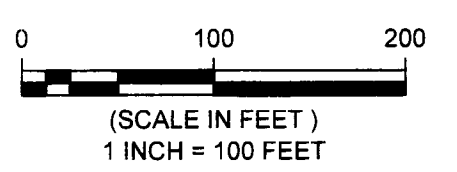
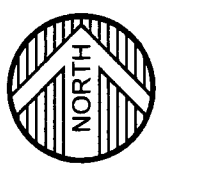
LEGEND
(47.15) DENOTES DISTANCE PER THE PLAT OF MINNESOTA DEPARTMENT OF TRANSPORTATION RIGHT OF WAY PLAT NO. 02-36

--- DENOTES WETLAND DELINEATED BY BOPRAY ENVIRONMENTAL ON JUNE 28, 2016
--- DENOTES ACCESS DEDICATED TO THE STATE OF MINNESOTA
--- DENOTES ACCESS DEDICATED TO THE STATE OF MINNESOTA AS SHOWN ON THE PLAT OF MINNESOTA DEPARTMENT OF TRANSPORTATION RIGHT OF WAY PLAT NO. 02-36

DRAINAGE AND UTILITY EASEMENTS ARE SHOWN THUS:



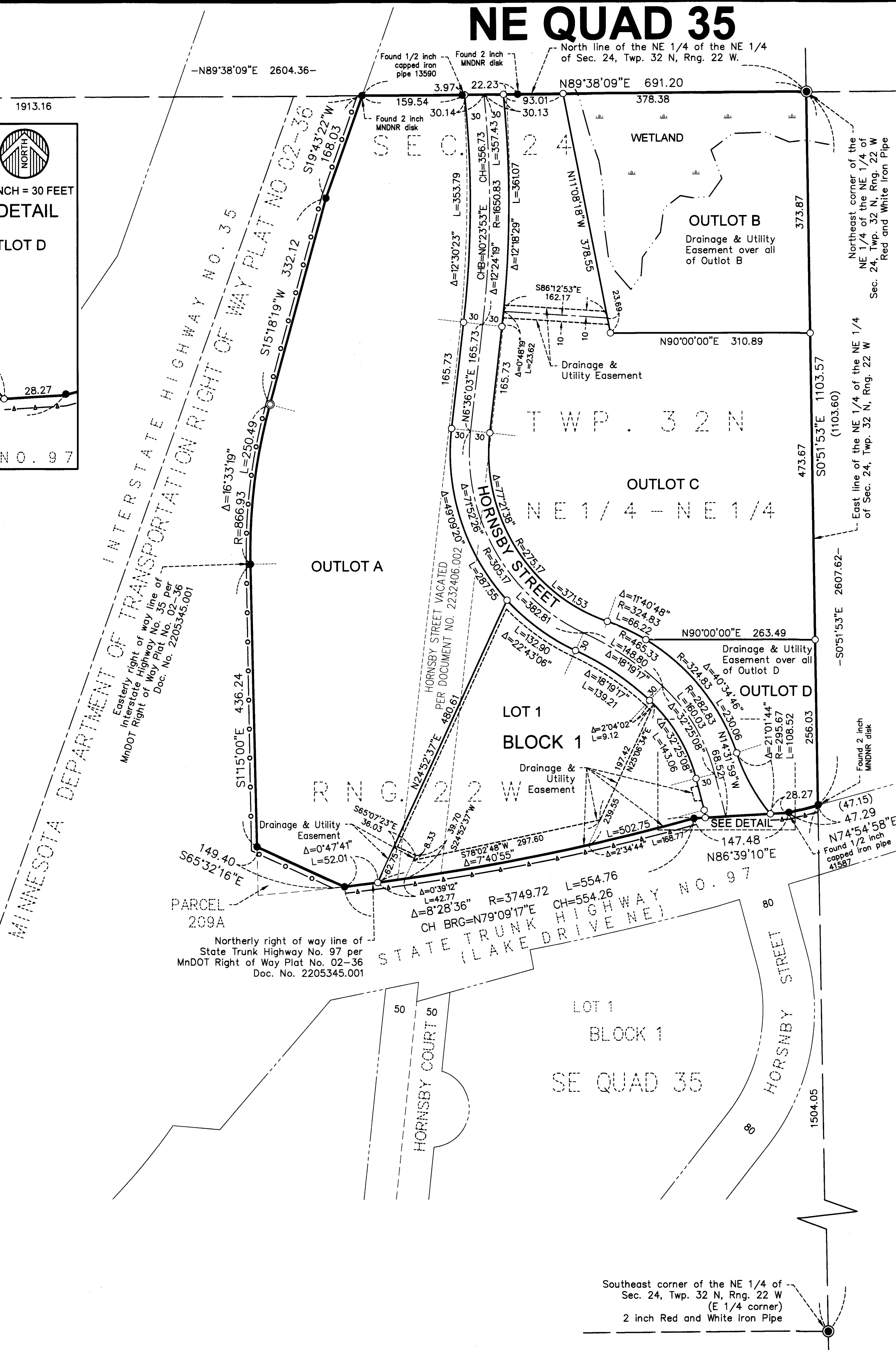
BEING 10 FEET IN WIDTH ADJOINING STREET LINES AND 5 FEET IN WIDTH ADJOINING LOT LINES, UNLESS OTHERWISE SHOWN ON THIS PLAT.



- DENOTES A FOUND 1/2 INCH IRON MONUMENT W/ CAP MARKED LS 49021 UNLESS OTHERWISE INDICATED ON PLAT
- DENOTES A SET 1/2 INCH IRON PIPE W/ CAP MARKED LS 49021
- DENOTES A FOUND HIGHWAY RIGHT OF WAY MONUMENT
- DENOTES AN ANOKA COUNTY SECTION CORNER MONUMENT AS LABELED

FOR THE PURPOSES OF THIS PLAT, THE NORTH LINE OF THE NORTHEAST QUARTER OF THE NORTHEAST QUARTER OF SECTION 24, TOWNSHIP 32, RANGE 22, ANOKA COUNTY, MINNESOTA IS ASSUMED TO HAVE A BEARING OF NORTH 89 DEGREES 38 MINUTES 09 SECONDS EAST.

WIDSETH SMITH NOLTING
Engineering | Architecture | Surveying | Environmental



Northeast corner of the NE 1/4 of the NE 1/4 of Sec. 24, Twp. 32 N, Rng. 22 W
Red and White Iron Pipe

East line of the NE 1/4 of the NE 1/4 of Sec. 24, Twp. 32 N, Rng. 22 W

Found 1/2 inch capped iron pipe 41587

Southeast corner of the NE 1/4 of Sec. 24, Twp. 32 N, Rng. 22 W (E 1/4 corner)
2 inch Red and White Iron Pipe